

LEA Name : Huntingdon Area SD  
Address : 2400 Cassidy Ave  
Huntingdon , PA 16652

County : Huntingdon  
AUN Number : 111312503  
LEA Type : SD

## Annual Financial Report Accuracy Certification Statement

For Fiscal Year Ending

6/30/2022

Pennsylvania Department of Education

&

Office of Comptroller Operations

PDE-2056: Intermediate Unit

PDE-2057: School District, AVTS/CTC, Charter School,  
and Special Program Jointure

CERTIFICATION: By signing this page I agree that the electronic data submitted is a complete and accurate statement of the financial operations and status of the local education agency for the fiscal year. It has been prepared in accordance with generally accepted accounting principles and established Commonwealth of PA reporting guidelines.



Chief School Administrator Signature

Date

2/10/2023



Board Secretary Signature

Date

2/10/2023

Matthew R Gibson

(814)641-2120 Ext :

Contact Person

Contact Person Telephone Number

mgibson@huntsd.org

(814)643-6244

Contact Person E-mail Address

Contact Person Fax Number

# Audit Certification

## Annual Financial Report:

For Fiscal Year Ending 6/30/2022

(Pursuant to PA School Code Section 218(b))

LEA Name : Huntingdon Area SD

AUN Number : 111312503

County : Huntingdon

Audit Certification Due:  
12/31/2022

This certification is applicable to the Annual Financial Report data submitted through the Consolidated Financial Reporting System (CFRS).

CERTIFICATION: By signing this page I agree that the financial statements of the school have been properly audited as noted above pursuant to Article XXIV, and in the auditor's professional opinion, the Annual Financial Report (PDE-2057) submitted through CFRS is materially consistent with the audited financial statements.

Chief School Administrator

Matthew R Gibson  
Signature

12/21/22  
Date

Board Secretary

Matthew R Gibson  
Signature

12/21/2022  
Date

Matthew R Gibson

Contact Person

mgibson@huntsd.org

Contact Person E-mail Address

(814)641-2120

Contact Person Telephone Number

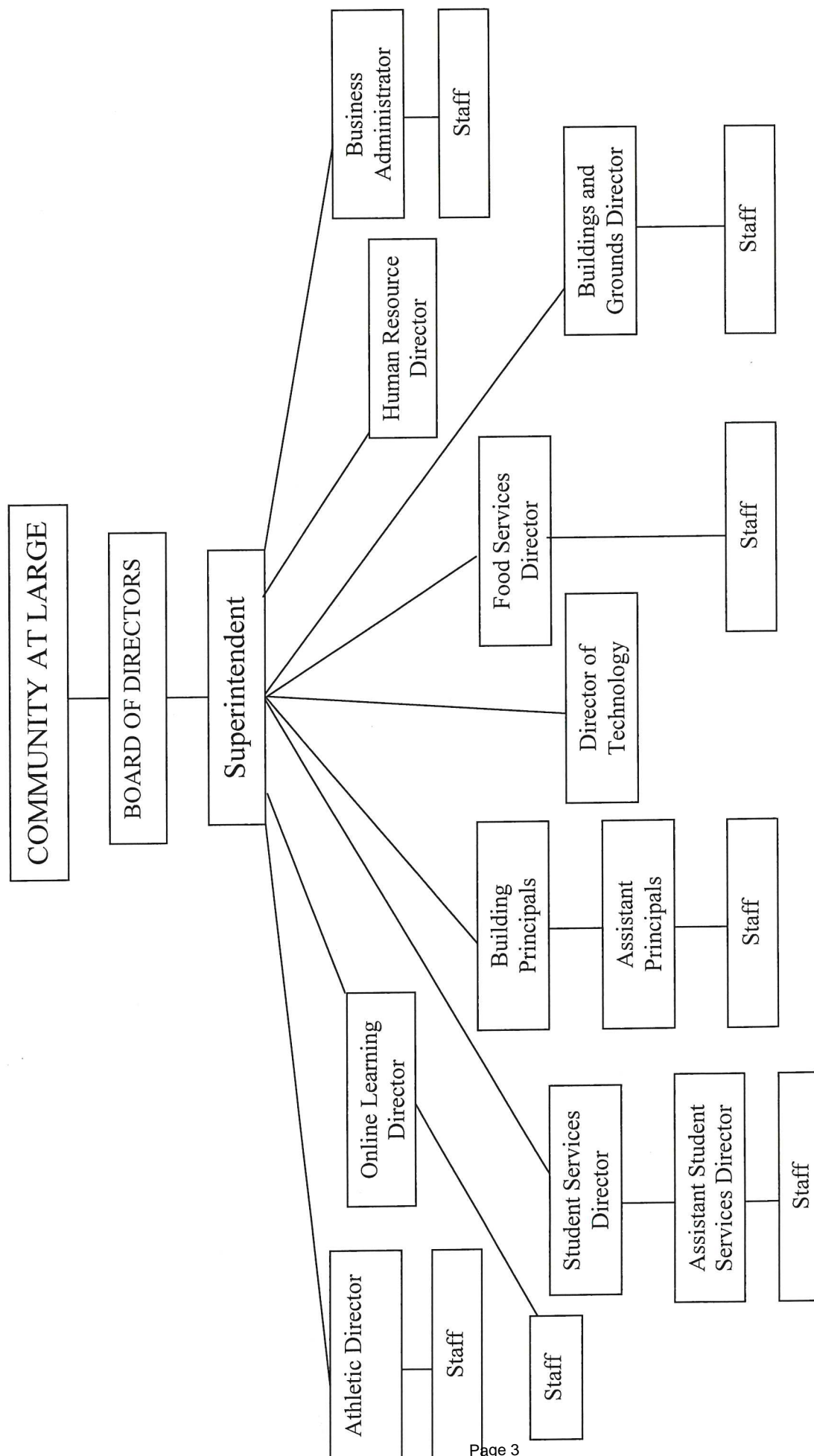
(814)643-6244

Contact Person Fax Number

Ext :

Contact Person Fax Number

# HUNTINGDON AREA SCHOOL DISTRICT





Book	Policy Manual
Section	600 Finances
Title	GASB Statement 34
Code	622
Status	Active
Legal	<a href="#">1. 24 P.S. 218</a> <a href="#">2. 24 P.S. 613</a> Governmental Accounting Standards Board, Statement No. 34
Adopted	October 17, 2016

**Purpose**

The Board recognizes the need to implement the required accounting and financial reporting standards stipulated by the Pennsylvania Department of Education.

The primary objectives of implementing the Governmental Accounting Standards Board (GASB) Statement 34 are to assure compliance with state requirements, and properly account for both the financial and economic resources of the district.

**Authority**

Participation of the school district in any such activity shall be in accordance with Board policy.[\[1\]](#)[\[2\]](#)

**Delegation of Responsibility**

The responsibility to coordinate the compilation and preparation of all information necessary to implement this policy is delegated to the Business Manager.

The designated individual shall be responsible for implementing the necessary procedures to establish and maintain a fixed asset inventory, including depreciation schedules. Depreciation shall be computed on a straight-line basis over the useful lives of the assets, using an averaging convention. Normal maintenance and repairs shall be charged to expense as incurred; major renewals and betterments that materially extend the life or increase the value of the asset shall be capitalized. A schedule of accumulated depreciation shall be consistent from year to year. The basis for depreciation, including groups of assets and useful lives, shall be in writing and submitted for review to the Board.

The Business Manager shall prepare the required Management Discussion and Analysis (MD&A). The MD&A shall be in the form required by GASB Statement 34 and shall be submitted to the Board for approval, prior to publication.

Prior to submission of the MD&A for Board approval, the district's independent auditors shall review the MD&A, in accordance with SAS No. 52, "Required Supplementary Information".

<u>Val Number</u>	<u>Description</u>	<u>Justification</u>
30160	<p>Federal IDEA revenue has been reported in revenue code 8512 or 8513 rather than in code 6832 as pass thru funds. Please make corrections or provide an explanation. Receipt of IDEA funded COVID 19 SECIM grants correctly recorded to 8512 can be noted in the justification.</p> <p>REV8512: \$16,174.35 REV8513: \$0.00</p>	<p>COVID 19 SEICM Grant is recorded in Revenue Code 8512 as directed by state.</p>
30635	<p>Revenue Detail: Current Tax Revenue amount cannot exceed 50% variance from prior year amount. Correct the data or enter a justification.</p> <p>6140, Current AFR Rev Detail: \$163,294.55 6140, Prior AFR Rev Detail: \$80,819.92</p>	<p>Verified Collection amounts and that collections for the correct tax.</p>
30685	<p>Revenue Detail: Current Tax Revenue amount cannot exceed 50% variance from prior year amount. Correct the data or enter a justification.</p> <p>6153, Current AFR Rev Detail: \$483,631.32 6153, Prior AFR Rev Detail: \$306,202.05</p>	<p>Verified Collection amounts and that collections for the correct tax.</p>
50410	<p>SESS - 2140 Psychological Services: SESS Schedule amounts for Special Education vary from prior year by 40% or more. Correct the data or enter a justification.</p> <p>SESS Schedule 2140: \$25,500.18 Prior Year SESS Schedule 2140: \$50,605.36</p>	<p>During the 20/21 Fiscal year the district had two staff Psychologist. Prior to the beginning of the 21/22 Fiscal year the District lost one of the staff Psychologists, leaving only one to provide services.</p>
60134	<p>ICR - Proprietary Expense Detail: Entries in Fund 51 and Object 100 must equal Statement of Revenues, Expenses, and Changes in Net Position (REP)</p> <p>Prop Exp Dtl: Fund 51, Object 100: \$332,472.00 REP: Fund 51, Object 100: \$306,658.00</p>	<p>Need ICR to reopen to fix.</p>
60135	<p>ICR - Proprietary Expense Detail: Entries in Fund 51 and Object 200 must equal Statement of Revenues, Expenses, and Changes in Net Position (REP)</p> <p>Prop Exp Dtl: Fund 51, Object 200: \$305,305.00 REP: Fund 51, Object 200: \$238,632.00</p>	<p>Need ICR to reopen to fix.</p>
60139	<p>ICR - Proprietary Expense Detail: Entries in Fund 51 and Object 600 must equal Statement of Revenues, Expenses, and Changes in Net Position (REP)</p> <p>Prop Exp Dtl: Fund 51, Object 600: \$52,547.00 REP: Fund 51, Object 600: \$51,999.00</p>	<p>Need ICR to reopen to fix.</p>

60141	ICR - Proprietary Expense Detail: Entries in Fund 51 and Object 800 must equal Statement of Revenues, Expenses, and Changes in Net Position (REP)	Need ICR to reopen to fix.
	Prop Exp Dtl: Fund 51, Object 800: \$0.00 REP: Fund 51, Object 800: \$548.00	

LEA : 111312503     Huntingdon Area SD

Printed 2/13/2023 9:22:08 AM

Amounts Expressed in Whole Dollars		<u>General Fund</u> <u>(10)</u>	<u>Student Sponsored</u> <u>Activity Fund</u> <u>(21)</u>	<u>Public Purpose Trust</u> <u>(27)</u>	<u>Other Compt Approved</u> <u>(28)</u>	<u>Athletic / Activity</u> <u>(29)</u>
<b>Assets And Deferred Outflows Of Resources</b>						
<b>Assets</b>						
0100	Cash and Cash Equivalents	5,565,507				
0110	Investments	12,792				(12,800)
0120	Taxes Receivable	434,044				
0130	Due From Other Funds	13,227				
0141	Due From Other Governments	2,175,933				
0142	State Revenue Receivable					
0143	Federal Revenue Receivable					
0145	Other Intergovernmental Revenue Receivable					
0146	Due from Primary Government					
0147	Due from Component Unit					
0150	Other Receivables	32,051				
0170	Inventories					
0180	Prepaid Expenses (Expenditures)					
0190	Other Current Assets					
<b>Total Assets</b>		<b>\$8,233,554</b>				<b>(\$12,800)</b>
0910	Deferred Outflows of Resources					
<b>Total Assets And Deferred Outflows Of Resources</b>		<b>\$8,233,554</b>				<b>(\$12,800)</b>

LEA : 111312503     Huntingdon Area SD

Printed 2/13/2023 9:22:08 AM

Amounts Expressed in Whole Dollars		<u>Capital Reserve (690.</u> <u>1850)</u> <u>(31)</u>	<u>Capital Reserve (1431)</u> <u>(32)</u>	<u>Other Capital Projects</u> <u>Fund</u> <u>(39)</u>	<u>Debt Service</u> <u>(40)</u>	<u>Permanent</u> <u>(90)</u>
<b>Assets And Deferred Outflows Of Resources</b>						
<b>Assets</b>						
0100	Cash and Cash Equivalents		2,338,414	13,844		
0110	Investments					
0120	Taxes Receivable					
0130	Due From Other Funds					
0141	Due From Other Governments					
0142	State Revenue Receivable					
0143	Federal Revenue Receivable					
0145	Other Intergovernmental Revenue Receivable					
0146	Due from Primary Government					
0147	Due from Component Unit					
0150	Other Receivables					
0170	Inventories					
0180	Prepaid Expenses (Expenditures)					
0190	Other Current Assets					
<b>Total Assets</b>			<b>\$2,338,414</b>	<b>\$13,844</b>		
0910	Deferred Outflows of Resources					
<b>Total Assets And Deferred Outflows Of Resources</b>			<b>\$2,338,414</b>	<b>\$13,844</b>		



LEA : 111312503     Huntingdon Area SD

Printed 2/13/2023 9:22:08 AM

Amounts Expressed in Whole Dollars		<u>Total Governmental</u>
		<u>Funds</u>
<b>Assets And Deferred Outflows Of Resources</b>		
<b>Assets</b>		
0100 Cash and Cash Equivalents	7,917,765	
0110 Investments	(8)	
0120 Taxes Receivable	434,044	
0130 Due From Other Funds	13,227	
0141 Due From Other Governments	2,175,933	
0142 State Revenue Receivable		
0143 Federal Revenue Receivable		
0145 Other Intergovernmental Revenue Receivable		
0146 Due from Primary Government		
0147 Due from Component Unit		
0150 Other Receivables	32,051	
0170 Inventories		
0180 Prepaid Expenses (Expenditures)		
0190 Other Current Assets		
<b>Total Assets</b>	<b>\$10,573,012</b>	
0910 Deferred Outflows of Resources		
<b>Total Assets And Deferred Outflows Of Resources</b>	<b>\$10,573,012</b>	

LEA : 111312503     Huntingdon Area SD

Printed 2/13/2023 9:22:08 AM

Amounts Expressed in Whole Dollars		<u>General Fund</u> <u>(10)</u>	<u>Student Sponsored</u> <u>Activity Fund</u> <u>(21)</u>	<u>Public Purpose Trust</u> <u>(27)</u>	<u>Other Compt Approved</u> <u>(28)</u>	<u>Athletic / Activity</u> <u>(29)</u>
<b>Liabilities And Deferred Inflows Of Resources And Fund Balances</b>						
<b>Liabilities</b>						
0400	Due to Other Funds	113,412				
0411	Due to Other Governments					
0412	Due to Primary Government					
0413	Due to Component Unit					
0420	Accounts Payable	663,203				
0430	Contracts Payable					
0440	Current Portion of Long-Term Debt					
0450	Short-Term Payables					
0461	Accrued Salaries and Benefits	2,038,223				
0462	Payroll Deductions and Withholding	2,172,945				
0480	Unearned Revenues					
0490	Other Current Liabilities	111,882				
<b>Total Liabilities</b>		<b>\$5,099,665</b>				
0950	Deferred Inflows of Resources	293,455				
<b>Fund Balances</b>						
0810	Nonspendable Fund Balance					
0820	Restricted Fund Balance					
0830	Committed Fund Balance	12,792				
0840	Assigned Fund Balance	1,618,945				
0850	Unassigned Fund Balance	1,208,697				(12,800)
<b>Total Fund Balances</b>		<b>\$2,840,434</b>				<b>(\$12,800)</b>
<b>Total Liabilities, Deferred Inflows Of Resources And Fund Balances</b>		<b>\$8,233,554</b>				<b>(\$12,800)</b>

LEA : 111312503     Huntingdon Area SD

Printed 2/13/2023 9:22:08 AM

Amounts Expressed in Whole Dollars		<u>Capital Reserve (690.</u> <u>1850)</u> <u>(31)</u>	<u>Capital Reserve (1431)</u> <u>(32)</u>	<u>Other Capital Projects</u> <u>Fund</u> <u>(39)</u>	<u>Debt Service</u> <u>(40)</u>	<u>Permanent</u> <u>(90)</u>
<b>Liabilities And Deferred Inflows Of Resources And Fund Balances</b>						
<b>Liabilities</b>						
0400	Due to Other Funds					
0411	Due to Other Governments					
0412	Due to Primary Government					
0413	Due to Component Unit					
0420	Accounts Payable					
0430	Contracts Payable					
0440	Current Portion of Long-Term Debt					
0450	Short-Term Payables					
0461	Accrued Salaries and Benefits					
0462	Payroll Deductions and Withholding					
0480	Unearned Revenues					
0490	Other Current Liabilities					
<b>Total Liabilities</b>						
0950	Deferred Inflows of Resources					
<b>Fund Balances</b>						
0810	Nonspendable Fund Balance					
0820	Restricted Fund Balance		2,338,414			
0830	Committed Fund Balance					
0840	Assigned Fund Balance			13,844		
0850	Unassigned Fund Balance					
<b>Total Fund Balances</b>			<b>\$2,338,414</b>	<b>\$13,844</b>		
<b>Total Liabilities, Deferred Inflows Of Resources And Fund Balances</b>			<b>\$2,338,414</b>	<b>\$13,844</b>		

LEA : 111312503     Huntingdon Area SD

Printed 2/13/2023 9:22:08 AM

Amounts Expressed in Whole Dollars		<u>Total Governmental</u> <u>Funds</u>
<b>Liabilities And Deferred Inflows Of Resources And Fund Balances</b>		
<b>Liabilities</b>		
0400 Due to Other Funds		113,412
0411 Due to Other Governments		
0412 Due to Primary Government		
0413 Due to Component Unit		
0420 Accounts Payable		663,203
0430 Contracts Payable		
0440 Current Portion of Long-Term Debt		
0450 Short-Term Payables		
0461 Accrued Salaries and Benefits		2,038,223
0462 Payroll Deductions and Withholding		2,172,945
0480 Unearned Revenues		
0490 Other Current Liabilities		111,882
<b>Total Liabilities</b>		<b>\$5,099,665</b>
0950 Deferred Inflows of Resources		293,455
<b>Fund Balances</b>		
0810 Nonspendable Fund Balance		
0820 Restricted Fund Balance		2,338,414
0830 Committed Fund Balance		12,792
0840 Assigned Fund Balance		1,632,789
0850 Unassigned Fund Balance		1,195,897
<b>Total Fund Balances</b>		<b>\$5,179,892</b>
<b>Total Liabilities, Deferred Inflows Of Resources And Fund Balances</b>		<b>\$10,573,012</b>

LEA : 111312503     Huntingdon Area SD

Printed 2/13/2023 9:22:22 AM

Amounts Expressed in Whole Dollars		<u>General Fund</u> <u>(10)</u>	<u>Student Sponsored</u> <u>Activity Fund</u> <u>(21)</u>	<u>Public Purpose Trust</u> <u>(27)</u>	<u>Other Compt Approved</u> <u>(28)</u>	<u>Athletic / Activity</u> <u>(29)</u>
<b>Revenues</b>						
6000	Revenue from Local Sources	14,431,983				53,080
7000	Revenue from State Sources	15,841,965				
8000	Revenue from Federal Sources	2,420,356				
<b>Total Revenues</b>		<b>\$32,694,304</b>				<b>\$53,080</b>
<b>Expenditures</b>						
1000	Instruction	20,085,235				
2000	Support Services	10,851,060				
3000	Operation of Non-Instructional Services	503,328				65,880
4000	Facilities Acquisition, Construction and Improvement Services					
5110	Debt Service	2,320,611				
5130	Refund of Prior Year Revenues / Receipts					
5140	Leases	60,019				
<b>Total Expenditures</b>		<b>\$33,820,253</b>				<b>\$65,880</b>
<b>Excess (Deficiency) Of Revenues Over Expenditures</b>		<b>(\$1,125,949)</b>				<b>(\$12,800)</b>
<b>Other Financing Sources (Uses)</b>						
9110	Face Value of Bonds Issued					
9120	Proceeds from Refunding of Bonds	9,890,000				
9130	Bond Premiums	115,677				
9200	Proceeds from Extended-Term Financing and Leases	104,257				
9300	Interfund Transfers - IN					
9400	Sale of or Compensation for Loss of Fixed Assets					
9710	Transfers from Component Units					
9720	Transfers from Primary Governments					
9910	Other Financing Sources Not Listed in the 9000 Series					
9990	Insurance Recoveries					
5120	Debt Service – Refunded Bonds	9,792,320				
5150	Bond Discounts					
5200	Interfund Transfers – Out					
5300	Transfers Out to Component Units/Primary Governments					
<b>Total Other Financing Sources (Uses)</b>		<b>\$317,614</b>				

Amounts Expressed in Whole Dollars		<u>Capital Reserve (690.</u> <u>1850)</u> <u>(31)</u>	<u>Capital Reserve (1431)</u> <u>(32)</u>	<u>Other Capital Projects</u> <u>Fund</u> <u>(39)</u>	<u>Debt Service</u> <u>(40)</u>	<u>Permanent</u> <u>(90)</u>
<b>Revenues</b>						
6000	Revenue from Local Sources		6,281			
7000	Revenue from State Sources					
8000	Revenue from Federal Sources					
<b>Total Revenues</b>			<b>\$6,281</b>			
<b>Expenditures</b>						
1000	Instruction					
2000	Support Services					
3000	Operation of Non-Instructional Services					
4000	Facilities Acquisition, Construction and Improvement Services					
5110	Debt Service					
5130	Refund of Prior Year Revenues / Receipts					
5140	Leases					
<b>Total Expenditures</b>						
<b>Excess (Deficiency) Of Revenues Over Expenditures</b>			<b>\$6,281</b>			
<b>Other Financing Sources (Uses)</b>						
9110	Face Value of Bonds Issued					
9120	Proceeds from Refunding of Bonds					
9130	Bond Premiums					
9200	Proceeds from Extended-Term Financing and Leases					
9300	Interfund Transfers - IN					
9400	Sale of or Compensation for Loss of Fixed Assets					
9710	Transfers from Component Units					
9720	Transfers from Primary Governments					
9910	Other Financing Sources Not Listed in the 9000 Series					
9990	Insurance Recoveries					
5120	Debt Service – Refunded Bonds					
5150	Bond Discounts					
5200	Interfund Transfers – Out					
5300	Transfers Out to Component Units/Primary Governments					
<b>Total Other Financing Sources (Uses)</b>						

LEA : 111312503     Huntingdon Area SD

Printed 2/13/2023 9:22:22 AM

Amounts Expressed in Whole Dollars		<u>Total Governmental Funds</u>
<b>Revenues</b>		
6000	Revenue from Local Sources	14,491,344
7000	Revenue from State Sources	15,841,965
8000	Revenue from Federal Sources	2,420,356
<b>Total Revenues</b>		<b>\$32,753,665</b>
<b>Expenditures</b>		
1000	Instruction	20,085,235
2000	Support Services	10,851,060
3000	Operation of Non-Instructional Services	569,208
4000	Facilities Acquisition, Construction and Improvement Services	
5110	Debt Service	2,320,611
5130	Refund of Prior Year Revenues / Receipts	
5140	Leases	60,019
<b>Total Expenditures</b>		<b>\$33,886,133</b>
<b>Excess (Deficiency) Of Revenues Over Expenditures</b>		<b>(\$1,132,468)</b>
<b>Other Financing Sources (Uses)</b>		
9110	Face Value of Bonds Issued	
9120	Proceeds from Refunding of Bonds	9,890,000
9130	Bond Premiums	115,677
9200	Proceeds from Extended-Term Financing and Leases	104,257
9300	Interfund Transfers - IN	
9400	Sale of or Compensation for Loss of Fixed Assets	
9710	Transfers from Component Units	
9720	Transfers from Primary Governments	
9910	Other Financing Sources Not Listed in the 9000 Series	
9990	Insurance Recoveries	
5120	Debt Service – Refunded Bonds	9,792,320
5150	Bond Discounts	
5200	Interfund Transfers – Out	
5300	Transfers Out to Component Units/Primary Governments	
<b>Total Other Financing Sources (Uses)</b>		<b>\$317,614</b>

Amounts Expressed in Whole Dollars		<u>General Fund</u> <u>(10)</u>	<u>Student Sponsored</u> <u>Activity Fund</u> <u>(21)</u>	<u>Public Purpose Trust</u> <u>(27)</u>	<u>Other Compt Approved</u> <u>(28)</u>	<u>Athletic / Activity</u> <u>(29)</u>
<b>Special And Extraordinary Items</b>						
9920	Special Items – Gains					
9930	Extraordinary Items – Gains					
5520	Special Items – Losses					
5530	Extraordinary Items – Losses					
<b>Net Change In Fund Balances</b>		<b>(\$808,335)</b>				<b>(\$12,800)</b>
<b>Fund Balance</b>						
0001	Fund Balance - Beginning of Fiscal Year	3,648,769				
<b>Fund Balance - End Of Year</b>		<b>\$2,840,434</b>				<b>(\$12,800)</b>



Amounts Expressed in Whole Dollars		<u>Capital Reserve (690.</u> <u>1850)</u> <u>(31)</u>	<u>Capital Reserve (1431)</u> <u>(32)</u>	<u>Other Capital Projects</u> <u>Fund</u> <u>(39)</u>	<u>Debt Service</u> <u>(40)</u>	<u>Permanent</u> <u>(90)</u>
<b>Special And Extraordinary Items</b>						
9920	Special Items – Gains					
9930	Extraordinary Items – Gains					
5520	Special Items – Losses					
5530	Extraordinary Items – Losses					
<b>Net Change In Fund Balances</b>			<b>\$6,281</b>			
<b>Fund Balance</b>						
0001	Fund Balance - Beginning of Fiscal Year		2,332,133	13,844		
<b>Fund Balance - End Of Year</b>			<b>\$2,338,414</b>	<b>\$13,844</b>		

Amounts Expressed in Whole Dollars		<u>Total Governmental</u> <u>Funds</u>
<b>Special And Extraordinary Items</b>		
9920	Special Items – Gains	
9930	Extraordinary Items – Gains	
5520	Special Items – Losses	
5530	Extraordinary Items – Losses	
<b>Net Change In Fund Balances</b>		<b>(\$814,854)</b>
<b>Fund Balance</b>		
0001	Fund Balance - Beginning of Fiscal Year	5,994,746
<b>Fund Balance - End Of Year</b>		<b>\$5,179,892</b>

LEA : 111312503     Huntingdon Area SD

Printed 2/13/2023 9:22:23 AM

Amounts Expressed in Whole Dollars		<u>Food Service</u> <u>(51)</u>	<u>Child Care</u> <u>Operations</u> <u>(52)</u>	<u>Other Enterprise</u> <u>(58)</u>	<u>TOTAL</u>	<u>Internal Service</u> <u>(60)</u>
<b>Assets And Deferred Outflows Of Resources</b>						
<b>Current Assets</b>						
0100	Cash and Cash Equivalents	252,244			252,244	
0110	Investments					
0130	Due From Other Funds	113,411			113,411	
0141	Due From Other Governments	13,870			13,870	
0142	State Revenue Receivable					
0143	Federal Revenue Receivable					
0146	Due from Primary Government					
0147	Due from Component Unit					
0150	Other Receivables	50,254			50,254	
0170	Inventories	6,197			6,197	
0180	Prepaid Expenses (Expenditures)					
0190	Other Current Assets					
<b>Total Current Assets</b>		<b>\$435,976</b>			<b>\$435,976</b>	
<b>Noncurrent Assets</b>						
0211	Land					
0212	Site Improvements (Net)					
0220	Buildings and Building Improvements (Net)					
0230	Machinery, Equipment and Furniture (Net)					
0250	Construction in Progress					
0260	Long Term Prepayments					
0290	Other Noncurrent Assets					
<b>Total Noncurrent Assets</b>						
0910	Deferred Outflows of Resources	73,075			73,075	
<b>Total Assets And Deferred Outflows Of Resources</b>		<b>\$509,051</b>			<b>\$509,051</b>	

Amounts Expressed in Whole Dollars	<u>Food Service</u> <u>(51)</u>	<u>Child Care</u> <u>Operations</u> <u>(52)</u>	<u>Other Enterprise</u> <u>(58)</u>	<u>TOTAL</u>	<u>Internal Service</u> <u>(60)</u>
<b>Liabilities And Deferred Inflows Of Resources And Net Position</b>					
<b>Current Liabilities</b>					
0400 Due to Other Funds	13,227			13,227	
0411 Due to Other Governments					
0413 Due to Component Unit					
0420 Accounts Payable	1,263			1,263	
0430 Contracts Payable					
0440 Current Portion of Long-Term Debt					
0450 Short-Term Payables					
0461 Accrued Salaries and Benefits					
0462 Payroll Deductions and Withholding					
0480 Unearned Revenues	55,475			55,475	
0490 Other Current Liabilities	5,577			5,577	
<b>Total Current Liabilities</b>	<b>\$75,542</b>			<b>\$75,542</b>	
<b>Noncurrent Liabilities</b>					
0510 Bonds Payable					
0520 Extended-Term Financing Agreements Payable					
0530 Lease Obligations					
0540 Accumulated Compensated Absences	18,796			18,796	
0550 Authority Lease Obligations					
0560 Other Post-Employment Benefits (OPEB)	110,262			110,262	
0570 Net Pension Liability	759,046			759,046	
0599 Other Noncurrent Liabilities					
<b>Total Noncurrent Liabilities</b>	<b>\$888,104</b>			<b>\$888,104</b>	
<b>Total Liabilities</b>	<b>\$963,646</b>			<b>\$963,646</b>	
0950 Deferred Inflows of Resources	149,204			149,204	
<b>Net Position</b>					
0791 Net Investment in Capital Assets					
0008 Restricted Net Position (0792 – 0798)					
0799 Unrestricted Net Position	(603,799)			(603,799)	
<b>Total Net Position</b>	<b>(\$603,799)</b>			<b>(\$603,799)</b>	
<b>Total Liabilities And Deferred Inflows Of Resources And Net Position</b>	<b>\$509,051</b>			<b>\$509,051</b>	

Amounts Expressed in Whole Dollars		<u>Food Service</u> <u>(51)</u>	<u>Child Care Operations</u> <u>(52)</u>	<u>Other Enterprise</u> <u>(58)</u>	<u>TOTAL</u>	<u>Internal Service</u> <u>(60)</u>
<b>Operating Revenues</b>						
6600	Food Service Revenue	61,159			61,159	
0071	Charges for Services					
0072	Other Operating Revenue					
<b>Total Operating Revenues</b>		<b>\$61,159</b>			<b>\$61,159</b>	
<b>Operating Expenses</b>						
100	Personnel Services – Salaries	306,658			306,658	
200	Personnel Services – Employee Benefits	238,632			238,632	
300	Purchased Professional and Technical Services					
400	Purchased Property Services					
500	Other Purchased Services	600,457			600,457	
600	Supplies	51,999			51,999	
740	Depreciation	665			665	
810	Dues and Fees					
880	Refunds of Prior Years' Receipts					
890	Miscellaneous Expenditures	548			548	
<b>Total Operating Expenses</b>		<b>\$1,198,959</b>			<b>\$1,198,959</b>	
<b>Operating Income (Loss)</b>		<b>(\$1,137,800)</b>			<b>(\$1,137,800)</b>	
<b>Non Operating Revenues (Expenses)</b>						
6500	Earnings on Investments					
6920	Contributions and Donations from Private Sources					
6930	Gains or Losses on Sale of Fixed Assets					
6991	Refunds of a Prior Year Expenditure					
7000	Revenue from State Sources	108,270			108,270	
8000	Revenue from Federal Sources	1,257,919			1,257,919	
9990	Insurance Recoveries					
820	Claims and Judgments Against the LEA					
830	Interest					
<b>TOTAL Non Operating Revenues (Expenses)</b>		<b>\$1,366,189</b>			<b>\$1,366,189</b>	
<b>Income (Loss) Before Contributions And Transfers</b>		<b>\$228,389</b>			<b>\$228,389</b>	

Amounts Expressed in Whole Dollars	<u>Food Service</u> (51)	<u>Child Care Operations</u> (52)	<u>Other Enterprise</u> (58)	<u>TOTAL</u>	<u>Internal Service</u> (60)
<b>Contributions, Transfers, and Special and Extraordinary Items</b>					
5200 Interfund Transfers – Out					
5300 Transfers Out to Component Units/Primary Governments					
5520 Special Items – Losses					
5530 Extraordinary Items – Losses					
9300 Interfund Transfers - IN					
9500 Capital Contributions					
9700 Transfers IN From Component Units/Primary Governments					
9920 Special Items – Gains					
9930 Extraordinary Items – Gains					
<b>Change In Net Position</b>	<b>\$228,389</b>			<b>\$228,389</b>	
0002 Net Position - Beginning of Fiscal Year	(832,188)			(832,188)	
0003 Accounting Changes / Residual Equity Transfers					
<b>Net Position - End Of Year</b>	<b>(\$603,799)</b>			<b>(\$603,799)</b>	

LEA : 111312503     Huntingdon Area SD

Printed 2/13/2023 9:22:40 AM

Amounts Expressed in Whole Dollars		<u>Food Service</u> <u>(51)</u>	<u>Child Care Operations</u> <u>(52)</u>	<u>Other Enterprise</u> <u>(58)</u>	<u>TOTAL</u>	<u>Internal Service(60)</u>
<b>Cash Flows From Operating Activities</b>						
0011	Cash Receipts From Users	192,895			192,895	
0012	Cash Receipts From Assessments Made to Other Funds					
0013	Cash Receipts From Earnings on Investments					
0014	Cash Receipts From Other Operating Revenue					
0015	Cash Payments To Employees For Services	720,601			720,601	
0016	Cash Payments For Insurance Claims					
0017	Cash Payments To Suppliers For Goods and Services	658,436			658,436	
0018	Cash Payments For Other Operating Expenses					
<b>Net Cash Provided By (Used For) Operating Activities</b>		<b>(\$1,186,142)</b>			<b>(\$1,186,142)</b>	
<b>Cash Flows From Non-Capital Financing Activities</b>						
0021	Receipts From Local Sources - 6000					
0022	Receipts From State Sources - 7000	107,872			107,872	
0023	Receipts From Federal Sources -8000	1,242,195			1,242,195	
0024	Notes and Loans Received (Repaid)					
0025	Interest Paid on Notes/Loans - 5100-830					
0026	Operating Transfers In (Out)/Residual Equity Trans					
0027	Operating Transfers In (Out) Primary Government / Comp Unit					
0028	Receipts From Refund of Prior Year Expenditures - 6991					
0029	Special and Extraordinary Gains (losses)					
0030	Receipts from Insurance Recoveries -9990					
<b>Net Cash Prov By (Used for) Non-Capital Financing Activities</b>		<b>\$1,350,067</b>			<b>\$1,350,067</b>	
<b>Cash Flows From Capital and Related Financing Activities</b>						
0031	Payments For Fac Acq, Const, and Imp - 4000					
0032	Gain / (Loss) on Sale of Fixed Assets - 6930					
0033	Proceeds From Extended Term Financing - 9200					
0034	Principal Paid on Financing Agreements					
0035	Interest Paid on Financing Agreements - 5100-830					
0036	(Inc) Dec in Contributed Capital					
<b>Net Cash Prov By (Used for) Capital and Related Financing Activities</b>						
<b>Cash Flows From Investing Activities</b>						
0041	Earnings on Investments - 6500					
0042	Purchase of Inv Securities / Deposits to Inv Pools					
0043	Receipts From Investment Pool Withdrawals					
0044	Proceeds from Sale and Maturity of Inv Securities					

LEA : 111312503     Huntingdon Area SD

Printed 2/13/2023 9:22:40 AM

0045   Loans Received (Paid)

**Net Cash Prov By (Used for) Investing Activities**



LEA : 111312503     Huntingdon Area SD

Printed 2/13/2023 9:22:40 AM

	<u>Food Service</u> <u>(51)</u>	<u>Child Care Operations</u> <u>(52)</u>	<u>Other Enterprise</u> <u>(58)</u>	<u>TOTAL</u>	<u>Internal Service</u> <u>(60)</u>
<b>Net Increase (Decrease) in Cash Flows</b>	<b>163,925</b>			<b>163,925</b>	
0004 Cash and Cash Equivalents Beginning of Year	88,317			88,317	
<b>Cash and Cash Equivalents at Year End</b>	<b>\$252,242</b>			<b>\$252,242</b>	
<b>Reconciliation of Operating Income (Loss) To Net Cash Provided by (Used For) Operating Activities</b>					
0005 Operating Income (Loss) per REP	(1,137,800)			(1,137,800)	
<b>Adjustments</b>					
0051 Depreciation and Net Amortization	665			665	
0052 Provision for Uncollectible Accounts					
0053 Other Adjustments	51,019			51,019	
<b>Effect of Changes in Assets, Liabilities, Deferred Outflows and Deferred Inflows</b>					
0054 (Inc) Dec In Accounts Receivable (0120-0150)	47,311			47,311	
0055 Advances to Other Funds (0160)					
0056 (Inc) Dec in Inventories (0170)	179			179	
0057 (Inc) Dec in Prepaid Expenses (0180)					
0058 (Inc) Dec in Other Current or Noncurrent Assets	(69,562)			(69,562)	
0064 Deferred Outflows (0910)	4,160			4,160	
0059 Inc (Dec) in Accounts Payable (0400-0450)	(5,611)			(5,611)	
0060 Inc (Dec) in Accrued Salaries/Benefits (0461)	(4,161)			(4,161)	
0065 Inc (Dec) in Net Pension Liabilities (0570)	(159,461)			(159,461)	
0066 Inc (Dec) in Other Postemp Benefit Oblig (0560)	(32,572)			(32,572)	
0061 Inc (Dec) in Payroll Deductions/Withholding (0462)					
0062 Inc (Dec) in Unearned Revenue (0480)	33,404			33,404	
0063 Inc (Dec) in Other Current or Noncurrent Liabilities	(35,641)			(35,641)	
0067 Deferred Inflows (0950)	121,930			121,930	
<b>Total Adjustments</b>	<b>(\$48,340)</b>			<b>(\$48,340)</b>	
<b>Cash Provided By (Used for) Total</b>	<b>(\$1,186,140)</b>			<b>(\$1,186,140)</b>	

COMBINED STATEMENT OF CASH FLOWS  
SCHEDULE OF NONCASH INVESTING, CAPITAL, AND FINANCING ACTIVITIES

Explanation of Transaction and Balance Sheet Effect	Amount
Total	

LEA : 111312503     Huntingdon Area SD

Printed 2/13/2023 9:22:41 AM

Amounts Expressed in Whole Dollars		<u>Private Purpose Trust</u> <u>(71)</u>	<u>Investment Trust</u> <u>(72)</u>	<u>Pension Trust</u> <u>(73)</u>	<u>Student Activity Custodial</u> <u>(81)</u>
<b>Assets And Deferred Outflows Of Resources</b>					
<b>Assets</b>					
0100	Cash and Cash Equivalents				65,252
0110	Investments				
0130	Due From Other Funds				
0140	Due from Other Governments, Primary Government and Component Units				
0150	Other Receivables				
0170	Inventories				
0180	Prepaid Expenses (Expenditures)				
0190	Other Current Assets				
0220	Buildings and Building Improvements (Net)				
0230	Machinery, Equipment and Furniture (Net)				
<b>Total Assets</b>					<b>\$65,252</b>
0910	Deferred Outflows of Resources				
<b>Total Assets And Deferred Outflows Of Resources</b>					<b>\$65,252</b>

LEA : 111312503     Huntingdon Area SD

Printed 2/13/2023 9:22:41 AM

Amounts Expressed in Whole Dollars		<u>Other Custodial</u> <u>(89)</u>	<u>Fiduciary Component Units</u> <u>(98)</u>	<u>Total Fiduciary Funds</u>
<b>Assets And Deferred Outflows Of Resources</b>				
<b>Assets</b>				
0100	Cash and Cash Equivalents			65,252
0110	Investments			
0130	Due From Other Funds			
0140	Due from Other Governments, Primary Government and Component Units			
0150	Other Receivables			
0170	Inventories			
0180	Prepaid Expenses (Expenditures)			
0190	Other Current Assets			
0220	Buildings and Building Improvements (Net)			
0230	Machinery, Equipment and Furniture (Net)			
<b>Total Assets</b>				<b>\$65,252</b>
0910	Deferred Outflows of Resources			
<b>Total Assets And Deferred Outflows Of Resources</b>				<b>\$65,252</b>

LEA : 111312503     Huntingdon Area SD

Printed 2/13/2023 9:22:41 AM

Amounts Expressed in Whole Dollars		<u>Private Purpose Trust</u> <u>(71)</u>	<u>Investment Trust</u> <u>(72)</u>	<u>Pension Trust</u> <u>(73)</u>	<u>Student Activity Custodial</u> <u>(81)</u>
<b>Liabilities, Deferred Inflows Of Resources And Net Position</b>					
<b>Liabilities</b>					
0400	Due to Other Funds				
0410	Due to Other Governments, Primary Government and Component Units				
0420	Accounts Payable				3
0430	Contracts Payable				
0450	Short-Term Payables				
0460	Payroll Accruals and Withholdings				
0480	Unearned Revenues				
0490	Other Current Liabilities				
<b>Total Liabilities</b>					<b>\$3</b>
0950	Deferred Inflows of Resources				
<b>Net Position</b>					
0791	Net Investment in Capital Assets				
0009	Restricted Net Position (0792 – 0798)				65,249
0799	Unrestricted Net Position				
<b>Total Net Position</b>					<b>\$65,249</b>
<b>Total Liabilities, Deferred Inflows Of Resources And Net Position</b>					<b>\$65,252</b>

LEA : 111312503     Huntingdon Area SD

Printed 2/13/2023 9:22:41 AM

Amounts Expressed in Whole Dollars		<u>Other Custodial</u> <u>(89)</u>	<u>Fiduciary Component Units</u> <u>(98)</u>	<u>Total Fiduciary Funds</u>
<b>Liabilities, Deferred Inflows Of Resources And Net Position</b>				
<b>Liabilities</b>				
0400	Due to Other Funds			
0410	Due to Other Governments, Primary Government and Component Units			
0420	Accounts Payable			3
0430	Contracts Payable			
0450	Short-Term Payables			
0460	Payroll Accruals and Withholdings			
0480	Unearned Revenues			
0490	Other Current Liabilities			
<b>Total Liabilities</b>				<b>\$3</b>
0950	Deferred Inflows of Resources			
<b>Net Position</b>				
0791	Net Investment in Capital Assets			
0009	Restricted Net Position (0792 – 0798)			65,249
0799	Unrestricted Net Position			
<b>Total Net Position</b>				<b>\$65,249</b>
<b>Total Liabilities, Deferred Inflows Of Resources And Net Position</b>				<b>\$65,252</b>

LEA : 111312503     Huntingdon Area SD

Printed 2/13/2023 9:22:42 AM

Amounts Expressed in Whole Dollars		<u>Private Purpose Trust</u> <u>(71)</u>	<u>Investment Trust</u> <u>(72)</u>	<u>Pension Trust</u> <u>(73)</u>	<u>Student Activity</u> <u>Custodial</u> <u>(81)</u>	<u>Other Custodial</u> <u>(89)</u>	<u>Fiduciary Component</u> <u>Units</u> <u>(98)</u>
<b>Additions</b>							
0091	Gifts and Contributions						
0095	Net Investment Earnings						
0092	Other Additions						
<b>Deductions</b>							
0093	Scholarships Awarded						
0094	Other Deductions						
<b>Change In Net Position</b>							
0006	Net Position – Beginning of Fiscal Year				65,249		
0007	Net Position Held in Trust for Pension Benefits						
<b>Net Position - End of Fiscal Year</b>					<b>\$65,249</b>		

LEA : 111312503     Huntingdon Area SD

Printed 2/13/2023 9:22:42 AM

Amounts Expressed in Whole Dollars		<u>Total Fiduciary</u>
		<u>Funds</u>
<b>Additions</b>		
0091	Gifts and Contributions	
0095	Net Investment Earnings	
0092	Other Additions	
<b>Deductions</b>		
0093	Scholarships Awarded	
0094	Other Deductions	
<b>Change In Net Position</b>		
0006	Net Position – Beginning of Fiscal Year	65,249
0007	Net Position Held in Trust for Pension Benefits	
<b>Net Position - End of Fiscal Year</b>		<b>\$65,249</b>



	Revenue Reported In Current Year	Current Year Tax Accrual	Prior Year Tax Accrual	Taxes Collected In Current Year
<b>Revenue from Local Sources</b>				
6111 Current Real Estate Taxes	9,799,300.02			9,799,300.02
6113 Public Utility Realty Taxes	12,572.70			12,572.70
6114 Payments in Lieu of Current Taxes - State / Local	12,869.85			12,869.85
6120 Current Per Capita Taxes, Section 679	35,605.10			35,605.10
6131 Current Act 1 Earned Income Taxes	1,426,459.53			1,426,459.53
6141 Current Act 511 Per Capita Taxes	121,235.05			121,235.05
6143 Current Act 511 Local Services Taxes	42,059.50			42,059.50
6151 Current Act 511 Earned Income Taxes	1,418,631.13			1,418,631.13
6153 Current Act 511 Real Estate Transfer Taxes	483,631.32			483,631.32
6411 Delinquent Real Estate Taxes	489,748.16			489,748.16
6420 Delinquent Per Capita Taxes, Section 679	2,959.23			2,959.23
6431 Delinquent Act 1 Earned Income Taxes	30,740.55			30,740.55
6440 Delinquent Local Enabling Taxes - Flat Rate Assessments	3,249.27			3,249.27
6451 Delinquent Act 511 Earned Income Taxes	30,730.13			30,730.13
6500 Earnings on Investments	10,569.67			
6700 Revenues from LEA Activities	1,150.00			
6832 Federal IDEA Revenue Received as Pass Through	439,803.14			
6910 Rentals	14,911.00			
6920 Contributions and Donations from Private Sources	5,937.23			
6941 Regular Day School Tuition	1,900.00			
6942 Summer School Tuition	5,140.00			
6991 Refunds of a Prior Year Expenditure	40,224.67			
6999 Other Revenues Not Specified Above	2,555.86			
<b>TOTAL Revenue from Local Sources</b>	<b>\$14,431,983.11</b>			<b>\$13,909,791.54</b>

	Revenue Reported In Current Year			
<b><u>Revenue from State Sources</u></b>				
7111 Basic Education Funding-Formula	8,572,667.15			
7112 Basic Education Funding-Social Security	459,005.13			
7160 Tuition for Orphans Subsidy	35,691.21			
7271 Special Education funds for School-Aged Pupils	1,586,609.72			
7292 Pre-K Counts	189,503.04			
7311 Pupil Transportation Subsidy	1,533,384.33			
7312 Nonpublic and Charter School Pupil Transportation Subsidy	82,390.00			
7340 State Property Tax Reduction Allocation	672,281.27			
7361 School Safety and Security Grants	149,855.52			
7505 Ready to Learn Block Grant	334,138.00			
7599 Other State Revenue Not Listed Elsewhere in the 7000 Series	29,845.13			
7820 State Share of Retirement Contributions	2,196,594.10			
<b>TOTAL Revenue from State Sources</b>	<b>\$15,841,964.60</b>			

Revenue Reported In Current Year				
Revenue from Federal Sources				
8512 IDEA, Part B	16,174.35			
8514 NCLB, Title I - Improving the Academic Achievement of the Disadvantaged	594,795.70			
8515 NCLB, Title II - Preparing, Training and Recruiting High Quality Teachers and Principals	76,880.99			
8517 NCLB, Title IV - 21St Century Schools	50,826.09			
8743 ESSER II - Elementary and Secondary School Emergency Relief Fund	303,869.50			
8744 ARP ESSER - Elementary and Secondary School Emergency Relief Fund	737,335.03			
8746 ARP IDEA	92,278.96			
8747 ARP ECF - Emergency Connectivity Fund	495,376.00			
8751 ARP ESSER Learning Loss	34,650.00			
8810 School-Based Access Medicaid Reimbursement Program (SBAP) Reimbursements (Access)	0.41			
8820 Medical Assistance Reimbursement for Administrative Claiming (Quarterly) Program	18,168.48			
TOTAL Revenue from Federal Sources	\$2,420,355.51			

Revenue Reported In Current Year				
<b><u>Other Financing Sources</u></b>				
9120	Proceeds from Refunding of Bonds	9,890,000.00		
9130	Bond Premiums	115,677.45		
9220	Leases	104,257.38		
<b>TOTAL Other Financing Sources</b>		<b>\$10,109,934.83</b>		
<b>TOTAL FROM ALL SOURCES</b>		<b>\$42,804,238.05</b>		<b>\$13,909,791.54</b>

LEA : 111312503     Huntingdon Area SD

Printed 2/13/2023 9:22:45 AM

	<u>General Fund (10)</u>	<u>Student Sponsored Activity Fund (21)</u>	<u>Public Purpose Trust (27)</u>	<u>Other Compt Approved (28)</u>	<u>Athletic / Activity (29)</u>	<u>Capital Reserve (690, 1850) (31)</u>
<b>6000 Revenue from Local Sources</b>						
6111 Current Real Estate Taxes	9,799,300.02					
6113 Public Utility Realty Taxes	12,572.70					
6114 Payments in Lieu of Current Taxes - State / Local	12,869.85					
6120 Current Per Capita Taxes, Section 679	35,605.10					
6131 Current Act 1 Earned Income Taxes	1,426,459.53					
6141 Current Act 511 Per Capita Taxes	121,235.05					
6143 Current Act 511 Local Services Taxes	42,059.50					
6151 Current Act 511 Earned Income Taxes	1,418,631.13					
6153 Current Act 511 Real Estate Transfer Taxes	483,631.32					
6411 Delinquent Real Estate Taxes	489,748.16					
6420 Delinquent Per Capita Taxes, Section 679	2,959.23					
6431 Delinquent Act 1 Earned Income Taxes	30,740.55					
6440 Delinquent Local Enabling Taxes - Flat Rate Assessments	3,249.27					
6451 Delinquent Act 511 Earned Income Taxes	30,730.13					
6500 Earnings on Investments	10,569.67					
6700 Revenues from LEA Activities	1,150.00				53,080.25	
6832 Federal IDEA Revenue Received as Pass Through	439,803.14					
6910 Rentals	14,911.00					
6920 Contributions and Donations from Private Sources	5,937.23					
6941 Regular Day School Tuition	1,900.00					
6942 Summer School Tuition	5,140.00					
6991 Refunds of a Prior Year Expenditure	40,224.67					
6999 Other Revenues Not Specified Above	2,555.86					
<b>6000 Total Revenue from Local Sources</b>	<b>\$14,431,983.11</b>				<b>\$53,080.25</b>	
<b>7000 Revenue from State Sources</b>						
7111 Basic Education Funding-Formula	8,572,667.15					
7112 Basic Education Funding-Social Security	459,005.13					
7160 Tuition for Orphans Subsidy	35,691.21					
7271 Special Education funds for School-Aged Pupils	1,586,609.72					
7292 Pre-K Counts	189,503.04					
7311 Pupil Transportation Subsidy	1,533,384.33					
7312 Nonpublic and Charter School Pupil Transportation Subsidy	82,390.00					
7340 State Property Tax Reduction Allocation	672,281.27					
7361 School Safety and Security Grants	149,855.52					
7505 Ready to Learn Block Grant	334,138.00					

LEA : 111312503     Huntingdon Area SD

Printed 2/13/2023 9:22:45 AM

	<u>Capital Reserve</u> <u>(1431) (32)</u>	<u>Other Capital</u> <u>Projects Fund (39)</u>	<u>Debt Service (40)</u>	<u>Permanent (90)</u>	<u>Total</u>
<b>6000 Revenue from Local Sources</b>					
6111 Current Real Estate Taxes					9,799,300.02
6113 Public Utility Realty Taxes					12,572.70
6114 Payments in Lieu of Current Taxes - State / Local					12,869.85
6120 Current Per Capita Taxes, Section 679					35,605.10
6131 Current Act 1 Earned Income Taxes					1,426,459.53
6141 Current Act 511 Per Capita Taxes					121,235.05
6143 Current Act 511 Local Services Taxes					42,059.50
6151 Current Act 511 Earned Income Taxes					1,418,631.13
6153 Current Act 511 Real Estate Transfer Taxes					483,631.32
6411 Delinquent Real Estate Taxes					489,748.16
6420 Delinquent Per Capita Taxes, Section 679					2,959.23
6431 Delinquent Act 1 Earned Income Taxes					30,740.55
6440 Delinquent Local Enabling Taxes - Flat Rate Assessments					3,249.27
6451 Delinquent Act 511 Earned Income Taxes					30,730.13
6500 Earnings on Investments	2,614.05				13,183.72
6700 Revenues from LEA Activities					54,230.25
6832 Federal IDEA Revenue Received as Pass Through					439,803.14
6910 Rentals					14,911.00
6920 Contributions and Donations from Private Sources					5,937.23
6941 Regular Day School Tuition					1,900.00
6942 Summer School Tuition					5,140.00
6991 Refunds of a Prior Year Expenditure	3,666.67				43,891.34
6999 Other Revenues Not Specified Above					2,555.86
<b>6000 Total Revenue from Local Sources</b>	<b>\$6,280.72</b>				<b>\$14,491,344.08</b>
<b>7000 Revenue from State Sources</b>					
7111 Basic Education Funding-Formula					8,572,667.15
7112 Basic Education Funding-Social Security					459,005.13
7160 Tuition for Orphans Subsidy					35,691.21
7271 Special Education funds for School-Aged Pupils					1,586,609.72
7292 Pre-K Counts					189,503.04
7311 Pupil Transportation Subsidy					1,533,384.33
7312 Nonpublic and Charter School Pupil Transportation Subsidy					82,390.00
7340 State Property Tax Reduction Allocation					672,281.27
7361 School Safety and Security Grants					149,855.52
7505 Ready to Learn Block Grant					334,138.00

LEA : 111312503     Huntingdon Area SD

Printed 2/13/2023 9:22:45 AM

	<u>General Fund (10)</u>	<u>Student Sponsored Activity Fund (21)</u>	<u>Public Purpose Trust (27)</u>	<u>Other Compt Approved (28)</u>	<u>Athletic / Activity (29)</u>	<u>Capital Reserve (690, 1850) (31)</u>
<b>7000 Revenue from State Sources</b>						
7599 Other State Revenue Not Listed Elsewhere in the 7000 Series	29,845.13					
7820 State Share of Retirement Contributions	2,196,594.10					
<b>7000 Total Revenue from State Sources</b>	<b>\$15,841,964.60</b>					
<b>8000 Revenue from Federal Sources</b>						
8512 IDEA, Part B	16,174.35					
8514 NCLB, Title I - Improving the Academic Achievement of the Disadvantaged	594,795.70					
8515 NCLB, Title II - Preparing, Training and Recruiting High Quality Teachers and Principals	76,880.99					
8517 NCLB, Title IV - 21st Century Schools	50,826.09					
8743 ESSER II - Elementary and Secondary School Emergency Relief Fund	303,869.50					
8744 ARP ESSER - Elementary and Secondary School Emergency Relief Fund	737,335.03					
8746 ARP IDEA	92,278.96					
8747 ARP ECF - Emergency Connectivity Fund	495,376.00					
8751 ARP ESSER Learning Loss	34,650.00					
8810 School-Based Access Medicaid Reimbursement Program (SBAP) Reimbursements (Access)	0.41					
8820 Medical Assistance Reimbursement for Administrative Claiming (Quarterly) Program	18,168.48					
<b>8000 Total Revenue from Federal Sources</b>	<b>\$2,420,355.51</b>					
<b>9000 Other Financing Sources</b>						
9120 Proceeds from Refunding of Bonds	9,890,000.00					
9130 Bond Premiums	115,677.45					
9220 Leases	104,257.38					
<b>9000 Total Other Financing Sources</b>	<b>\$10,109,934.83</b>					
<b>Total From All Sources</b>	<b>\$42,804,238.05</b>				<b>\$53,080.25</b>	

LEA : 111312503     Huntingdon Area SD

Printed 2/13/2023 9:22:45 AM

	<u>Capital Reserve</u> <u>(1431) (32)</u>	<u>Other Capital</u> <u>Projects Fund (39)</u>	<u>Debt Service (40)</u>	<u>Permanent (90)</u>	<u>Total</u>
<b>7000 Revenue from State Sources</b>					
7599 Other State Revenue Not Listed Elsewhere in the 7000 Series					29,845.13
7820 State Share of Retirement Contributions					2,196,594.10
<b>7000 Total Revenue from State Sources</b>					<b>\$15,841,964.60</b>
<b>8000 Revenue from Federal Sources</b>					
8512 IDEA, Part B					16,174.35
8514 NCLB, Title I - Improving the Academic Achievement of the Disadvantaged					594,795.70
8515 NCLB, Title II - Preparing, Training and Recruiting High Quality Teachers and Principals					76,880.99
8517 NCLB, Title IV - 21st Century Schools					50,826.09
8743 ESSER II - Elementary and Secondary School Emergency Relief Fund					303,869.50
8744 ARP ESSER - Elementary and Secondary School Emergency Relief Fund					737,335.03
8746 ARP IDEA					92,278.96
8747 ARP ECF - Emergency Connectivity Fund					495,376.00
8751 ARP ESSER Learning Loss					34,650.00
8810 School-Based Access Medicaid Reimbursement Program (SBAP) Reimbursements (Access)					0.41
8820 Medical Assistance Reimbursement for Administrative Claiming (Quarterly) Program					18,168.48
<b>8000 Total Revenue from Federal Sources</b>					<b>\$2,420,355.51</b>
<b>9000 Other Financing Sources</b>					
9120 Proceeds from Refunding of Bonds					9,890,000.00
9130 Bond Premiums					115,677.45
9220 Leases					104,257.38
<b>9000 Total Other Financing Sources</b>					<b>\$10,109,934.83</b>
<b>Total From All Sources</b>	<b>\$6,280.72</b>				<b>\$42,863,599.02</b>



LEA : 111312503     Huntingdon Area SD

Printed 2/13/2023 9:22:47 AM

	<u>General Fund (10)</u>	<u>Student Sponsored Activity Fund (21)</u>	<u>Public Purpose Trust (27)</u>	<u>Other Compt Approved (28)</u>	<u>Athletic / Activity (29)</u>	<u>Capital Reserve (690. 1850) (31)</u>
Revenue from Local Sources	14,431,983.11				53,080.25	
Revenue from State Sources	15,841,964.60					
Revenue from Federal Sources	2,420,355.51					
Other Financing Sources	10,109,934.83					
Total From All Sources	\$42,804,238.05				\$53,080.25	

LEA : 111312503     Huntingdon Area SD

Printed 2/13/2023 9:22:47 AM

	<u>Capital Reserve (1431)</u> <u>(32)</u>	<u>Other Capital Projects</u> <u>Fund (39)</u>	<u>Debt Service (40)</u>	<u>Permanent (90)</u>	<u>Total</u>
Revenue from Local Sources	6,280.72				14,491,344.08
Revenue from State Sources					15,841,964.60
Revenue from Federal Sources					2,420,355.51
Other Financing Sources					10,109,934.83
Total From All Sources	\$6,280.72				\$42,863,599.02

LEA : 111312503     Huntingdon Area SD

Printed 2/13/2023 9:22:50 AM

General Fund (10)

1000 Instruction		Total
<b>100 <u>Personnel Services – Salaries</u></b>		
100 Personnel Services – Salaries		8,247,593.00
<b>Total Personnel Services – Salaries</b>		<b>\$8,247,593.00</b>
<b>200 <u>Personnel Services – Employee Benefits</u></b>		
210 Group Insurance – Contracted Provider		2,456,508.96
220 Social Security Contributions		612,006.47
230 PSERS Retirement Contributions		2,875,772.70
250 Unemployment Compensation		19,815.55
260 Workers' Compensation		31,504.18
280 Other Post-Employment Benefits (OPEB)		28,850.00
292 Health Savings Accounts		193,346.39
<b>Total Personnel Services – Employee Benefits</b>		<b>\$6,217,804.25</b>
<b>300 <u>Purchased Professional and Technical Services</u></b>		
322 Professional Educational Services – Ius		159,550.06
323 Professional Educational Services – Other Educational Agencies		133,276.66
329 Professional Educational Services – Other		752,839.22
330 Other Professional Services		107,046.00
<b>Total Purchased Professional and Technical Services</b>		<b>\$1,152,711.94</b>
<b>400 <u>Purchased Property Services</u></b>		
430 Repairs and Maintenance Services		1,275.19
440 Rentals		(2,153.97)
<b>Total Purchased Property Services</b>		<b>(\$878.78)</b>
<b>500 <u>Other Purchased Services</u></b>		
510 Student Transportation Services		20,587.59
549 Other Advertising/Public Relations		349.15
561 Tuition To Other School Districts Within the State		39,674.82
562 Tuition To Pennsylvania Charter Schools		3,417,767.56
564 Tuition To Career and Technology Centers		610,587.96
567 Tuition To Approved Private Schools (APS) and PA Chartered Schools for the Deaf and Blind		73,603.88
568 Tuition To Private Residential Rehabilitative Institutions (PRRI) [In-State] and Detention Centers		31,246.00
580 Travel		13,181.72
<b>Total Other Purchased Services</b>		<b>\$4,206,998.68</b>
<b>600 <u>Supplies</u></b>		
610 General Supplies		115,438.76
620 Energy		229.92
630 Food		2,587.61
640 Books and Periodicals		37,803.71
650 Supplies & Fees – Technology Related		52,611.77
<b>Total Supplies</b>		<b>\$208,671.77</b>
<b>700 <u>Property</u></b>		
762 Capitalized Equipment - Replacement		1,599.00
790 Other Property		50,869.60
<b>Total Property</b>		<b>\$52,468.60</b>

LEA : 111312503     Huntingdon Area SD

Printed 2/13/2023 9:22:50 AM

General Fund (10)		
1000 Instruction		<u>Total</u>
800 <u>Other Objects</u>		
810 Dues and Fees		(134.00)
Total Other Objects		(\$134.00)
Total 1000 Instruction		\$20,085,235.46

LEA : 111312503     Huntingdon Area SD

Printed 2/13/2023 9:22:50 AM

General Fund (10)

1100 Regular Programs – Elementary / Secondary

	Elementary	Secondary	Federal	Total
<b>100 <u>Personnel Services – Salaries</u></b>				
100 Personnel Services – Salaries	2,248,068.56	2,690,590.07	606,571.75	5,545,230.38
<b>Total Personnel Services – Salaries</b>	<b>\$2,248,068.56</b>	<b>\$2,690,590.07</b>	<b>\$606,571.75</b>	<b>\$5,545,230.38</b>
<b>200 <u>Personnel Services – Employee Benefits</u></b>				
210 Group Insurance – Contracted Provider	691,943.46	829,469.14	88,930.29	1,610,342.89
220 Social Security Contributions	163,864.17	196,276.44	45,185.06	405,325.67
230 PSERS Retirement Contributions	871,937.43	971,221.80	105,596.15	1,948,755.38
250 Unemployment Compensation	5,311.81	4,993.49	1,076.83	11,382.13
260 Workers' Compensation	(6,595.47)	(1,504.73)	7,060.48	(1,039.72)
280 Other Post-Employment Benefits (OPEB)	20,450.00	8,400.00		28,850.00
292 Health Savings Accounts	54,440.00	61,509.26	5,290.74	121,240.00
<b>Total Personnel Services – Employee Benefits</b>	<b>\$1,801,351.40</b>	<b>\$2,070,365.40</b>	<b>\$253,139.55</b>	<b>\$4,124,856.35</b>
<b>300 <u>Purchased Professional and Technical Services</u></b>				
322 Professional Educational Services – Ius			5,240.00	5,240.00
329 Professional Educational Services – Other		263,572.67	15,091.85	278,664.52
<b>Total Purchased Professional and Technical Services</b>		<b>\$263,572.67</b>	<b>\$20,331.85</b>	<b>\$283,904.52</b>
<b>400 <u>Purchased Property Services</u></b>				
430 Repairs and Maintenance Services		1,275.19		1,275.19
440 Rentals	(1,063.88)	(1,090.09)		(2,153.97)
<b>Total Purchased Property Services</b>	<b>(\$1,063.88)</b>	<b>\$185.10</b>		<b>(\$878.78)</b>
<b>500 <u>Other Purchased Services</u></b>				
510 Student Transportation Services	1,121.24	3,535.80		4,657.04
561 Tuition To Other School Districts Within the State		17,992.64		17,992.64
562 Tuition To Pennsylvania Charter Schools	62,272.46	1,930,301.54		1,992,574.00
568 Tuition To Private Residential Rehabilitative Institutions (PRRI) [In-State] and Detention Centers		31,246.00		31,246.00
580 Travel		469.12	11,615.00	12,084.12
<b>Total Other Purchased Services</b>	<b>\$63,393.70</b>	<b>\$1,983,545.10</b>	<b>\$11,615.00</b>	<b>\$2,058,553.80</b>
<b>600 <u>Supplies</u></b>				
610 General Supplies	26,513.91	31,658.97	8,522.02	66,694.90
630 Food			48.06	48.06
640 Books and Periodicals	11,966.91	4,203.94		16,170.85
650 Supplies & Fees – Technology Related	218.25	937.90	47,993.62	49,149.77
<b>Total Supplies</b>	<b>\$38,699.07</b>	<b>\$36,800.81</b>	<b>\$56,563.70</b>	<b>\$132,063.58</b>
<b>700 <u>Property</u></b>				
762 Capitalized Equipment - Replacement		1,599.00		1,599.00
790 Other Property	(2,424.00)	53,293.60		50,869.60
<b>Total Property</b>	<b>(\$2,424.00)</b>	<b>\$54,892.60</b>		<b>\$52,468.60</b>
<b>800 <u>Other Objects</u></b>				
810 Dues and Fees		(134.00)		(134.00)
<b>Total Other Objects</b>		<b>(134.00)</b>		<b>(134.00)</b>
<b>Total 1100 Regular Programs – Elementary / Secondary</b>	<b>\$4,148,024.85</b>	<b>\$7,099,817.75</b>	<b>\$948,221.85</b>	<b>\$12,196,064.45</b>

LEA : 111312503     Huntingdon Area SD

Printed 2/13/2023 9:22:50 AM

General Fund (10)

1110 Regular Programs

	Elementary	Secondary	Federal	Total
<b>100 <u>Personnel Services – Salaries</u></b>				
100 Personnel Services – Salaries	2,248,068.56	2,690,590.07	137,391.21	5,076,049.84
<b>Total Personnel Services – Salaries</b>	<b>\$2,248,068.56</b>	<b>\$2,690,590.07</b>	<b>\$137,391.21</b>	<b>\$5,076,049.84</b>
<b>200 <u>Personnel Services – Employee Benefits</u></b>				
210 Group Insurance – Contracted Provider	691,943.46	829,469.14		1,521,412.60
220 Social Security Contributions	163,864.17	196,276.44	10,210.41	370,351.02
230 PSERS Retirement Contributions	871,937.43	971,221.80	24,670.83	1,867,830.06
250 Unemployment Compensation	5,311.81	4,993.49	33.23	10,338.53
260 Workers' Compensation	(6,595.47)	(1,504.73)	1,648.76	(6,451.44)
280 Other Post-Employment Benefits (OPEB)	20,450.00	8,400.00		28,850.00
292 Health Savings Accounts	54,440.00	61,509.26	1,490.74	117,440.00
<b>Total Personnel Services – Employee Benefits</b>	<b>\$1,801,351.40</b>	<b>\$2,070,365.40</b>	<b>\$38,053.97</b>	<b>\$3,909,770.77</b>
<b>300 <u>Purchased Professional and Technical Services</u></b>				
322 Professional Educational Services – Ius			5,240.00	5,240.00
329 Professional Educational Services – Other		263,572.67	11,411.85	274,984.52
<b>Total Purchased Professional and Technical Services</b>		<b>\$263,572.67</b>	<b>\$16,651.85</b>	<b>\$280,224.52</b>
<b>400 <u>Purchased Property Services</u></b>				
430 Repairs and Maintenance Services		1,275.19		1,275.19
440 Rentals	(1,063.88)	(1,090.09)		(2,153.97)
<b>Total Purchased Property Services</b>	<b>(\$1,063.88)</b>	<b>\$185.10</b>		<b>(\$878.78)</b>
<b>500 <u>Other Purchased Services</u></b>				
510 Student Transportation Services	1,121.24	3,535.80		4,657.04
561 Tuition To Other School Districts Within the State		17,992.64		17,992.64
562 Tuition To Pennsylvania Charter Schools	62,272.46	1,930,301.54		1,992,574.00
568 Tuition To Private Residential Rehabilitative Institutions (PRRI) [In-State] and Detention Centers		31,246.00		31,246.00
580 Travel		469.12		469.12
<b>Total Other Purchased Services</b>	<b>\$63,393.70</b>	<b>\$1,983,545.10</b>		<b>\$2,046,938.80</b>
<b>600 <u>Supplies</u></b>				
610 General Supplies	26,513.91	31,658.97	32.45	58,205.33
630 Food			48.06	48.06
640 Books and Periodicals	11,966.91	4,203.94		16,170.85
650 Supplies & Fees – Technology Related	218.25	937.90	34,650.00	35,806.15
<b>Total Supplies</b>	<b>\$38,699.07</b>	<b>\$36,800.81</b>	<b>\$34,730.51</b>	<b>\$110,230.39</b>
<b>700 <u>Property</u></b>				
762 Capitalized Equipment - Replacement		1,599.00		1,599.00
790 Other Property	(2,424.00)	53,293.60		50,869.60
<b>Total Property</b>	<b>(\$2,424.00)</b>	<b>\$54,892.60</b>		<b>\$52,468.60</b>
<b>800 <u>Other Objects</u></b>				
810 Dues and Fees		(134.00)		(134.00)
<b>Total Other Objects</b>		<b>(134.00)</b>		<b>(134.00)</b>
<b>Total 1110 Regular Programs</b>	<b>\$4,148,024.85</b>	<b>\$7,099,817.75</b>	<b>\$226,827.54</b>	<b>\$11,474,670.14</b>

LEA : 111312503     Huntingdon Area SD

Printed 2/13/2023 9:22:50 AM

General Fund (10)

1190 Federally-Funded Regular Programs

	<u>Elementary</u>	<u>Secondary</u>	<u>Federal</u>	<u>Total</u>
<b>100 <u>Personnel Services – Salaries</u></b>				
100 Personnel Services – Salaries			469,180.54	469,180.54
<b>Total Personnel Services – Salaries</b>			<b>\$469,180.54</b>	<b>\$469,180.54</b>
<b>200 <u>Personnel Services – Employee Benefits</u></b>				
210 Group Insurance – Contracted Provider			88,930.29	88,930.29
220 Social Security Contributions			34,974.65	34,974.65
230 PSERS Retirement Contributions			80,925.32	80,925.32
250 Unemployment Compensation			1,043.60	1,043.60
260 Workers' Compensation			5,411.72	5,411.72
292 Health Savings Accounts			3,800.00	3,800.00
<b>Total Personnel Services – Employee Benefits</b>			<b>\$215,085.58</b>	<b>\$215,085.58</b>
<b>300 <u>Purchased Professional and Technical Services</u></b>				
329 Professional Educational Services – Other			3,680.00	3,680.00
<b>Total Purchased Professional and Technical Services</b>			<b>\$3,680.00</b>	<b>\$3,680.00</b>
<b>500 <u>Other Purchased Services</u></b>				
580 Travel			11,615.00	11,615.00
<b>Total Other Purchased Services</b>			<b>\$11,615.00</b>	<b>\$11,615.00</b>
<b>600 <u>Supplies</u></b>				
610 General Supplies			8,489.57	8,489.57
650 Supplies & Fees – Technology Related			13,343.62	13,343.62
<b>Total Supplies</b>			<b>\$21,833.19</b>	<b>\$21,833.19</b>
<b>Total 1190 Federally-Funded Regular Programs</b>			<b>\$721,394.31</b>	<b>\$721,394.31</b>

LEA : 111312503     Huntingdon Area SD

Printed 2/13/2023 9:22:50 AM

General Fund (10)

1200 Special Programs – Elementary / Secondary	Elementary	Secondary	Federal	Total
<b>100 Personnel Services – Salaries</b>				
100 Personnel Services – Salaries	1,399,069.70	905,423.52	13,908.00	2,318,401.22
<b>Total Personnel Services – Salaries</b>	<b>\$1,399,069.70</b>	<b>\$905,423.52</b>	<b>\$13,908.00</b>	<b>\$2,318,401.22</b>
<b>200 Personnel Services – Employee Benefits</b>				
210 Group Insurance – Contracted Provider	427,347.58	305,491.65	436.17	733,275.40
220 Social Security Contributions	107,081.31	70,697.08	791.55	178,569.94
230 PSERS Retirement Contributions	484,474.14	307,675.93	781.00	792,931.07
250 Unemployment Compensation	5,055.62	2,495.10	8.94	7,559.66
260 Workers' Compensation	17,007.36	10,929.20		27,936.56
292 Health Savings Accounts	40,598.90	21,853.91		62,452.81
<b>Total Personnel Services – Employee Benefits</b>	<b>\$1,081,564.91</b>	<b>\$719,142.87</b>	<b>\$2,017.66</b>	<b>\$1,802,725.44</b>
<b>300 Purchased Professional and Technical Services</b>				
322 Professional Educational Services – Ius	69,906.98	12,827.95		82,734.93
329 Professional Educational Services – Other	98,388.79	361,185.01		459,573.80
330 Other Professional Services	107,046.00			107,046.00
<b>Total Purchased Professional and Technical Services</b>	<b>\$275,341.77</b>	<b>\$374,012.96</b>		<b>\$649,354.73</b>
<b>500 Other Purchased Services</b>				
510 Student Transportation Services	338.13	7,040.45		7,378.58
561 Tuition To Other School Districts Within the State		19,257.32		19,257.32
562 Tuition To Pennsylvania Charter Schools		929,291.46	495,902.10	1,425,193.56
567 Tuition To Approved Private Schools (APS) and PA Chartered Schools for the Deaf and Blind	73,603.88			73,603.88
580 Travel	832.60	165.00		997.60
<b>Total Other Purchased Services</b>	<b>\$74,774.61</b>	<b>\$955,754.23</b>	<b>\$495,902.10</b>	<b>\$1,526,430.94</b>
<b>600 Supplies</b>				
610 General Supplies	8,246.49	4,681.36	500.00	13,427.85
630 Food			266.68	266.68
640 Books and Periodicals	11,004.81	10,008.05		21,012.86
650 Supplies & Fees – Technology Related	108.00			108.00
<b>Total Supplies</b>	<b>\$19,359.30</b>	<b>\$14,689.41</b>	<b>\$766.68</b>	<b>\$34,815.39</b>
<b>Total 1200 Special Programs – Elementary / Secondary</b>	<b>\$2,850,110.29</b>	<b>\$2,969,022.99</b>	<b>\$512,594.44</b>	<b>\$6,331,727.72</b>



LEA : 111312503     Huntingdon Area SD

Printed 2/13/2023 9:22:50 AM

General Fund (10)

1210 Life Skills Support

	<u>Elementary</u>	<u>Secondary</u>	<u>Federal</u>	<u>Total</u>
<b>100 <u>Personnel Services – Salaries</u></b>				
100 Personnel Services – Salaries	306,666.92	162,643.28		469,310.20
<b>Total Personnel Services – Salaries</b>	<b>\$306,666.92</b>	<b>\$162,643.28</b>		<b>\$469,310.20</b>
<b>200 <u>Personnel Services – Employee Benefits</u></b>				
210 Group Insurance – Contracted Provider	107,370.33	86,979.28		194,349.61
220 Social Security Contributions	22,324.45	11,748.77		34,073.22
230 PSERS Retirement Contributions	107,068.15	54,278.40		161,346.55
250 Unemployment Compensation	1,363.74	695.86		2,059.60
260 Workers' Compensation	3,679.82	1,964.05		5,643.87
292 Health Savings Accounts	13,520.00	2,122.73		15,642.73
<b>Total Personnel Services – Employee Benefits</b>	<b>\$255,326.49</b>	<b>\$157,789.09</b>		<b>\$413,115.58</b>
<b>500 <u>Other Purchased Services</u></b>				
510 Student Transportation Services	338.13	826.35		1,164.48
<b>Total Other Purchased Services</b>	<b>\$338.13</b>	<b>\$826.35</b>		<b>\$1,164.48</b>
<b>600 <u>Supplies</u></b>				
610 General Supplies	969.65	2,712.82		3,682.47
<b>Total Supplies</b>	<b>\$969.65</b>	<b>\$2,712.82</b>		<b>\$3,682.47</b>
<b>Total 1210 Life Skills Support</b>	<b>\$563,301.19</b>	<b>\$323,971.54</b>		<b>\$887,272.73</b>

LEA : 111312503     Huntingdon Area SD

Printed 2/13/2023 9:22:50 AM

General Fund (10)

1220 Sensory Support

	<u>Elementary</u>	<u>Secondary</u>	<u>Federal</u>	<u>Total</u>
<b>100 <u>Personnel Services – Salaries</u></b>				
100 Personnel Services – Salaries	27,769.81	27,369.57		55,139.38
<b>Total Personnel Services – Salaries</b>	<b>\$27,769.81</b>	<b>\$27,369.57</b>		<b>\$55,139.38</b>
<b>200 <u>Personnel Services – Employee Benefits</u></b>				
210 Group Insurance – Contracted Provider	9,811.52	9,811.50		19,623.02
220 Social Security Contributions	1,942.42	1,912.98		3,855.40
230 PSERS Retirement Contributions	1,899.49	1,892.40		3,791.89
250 Unemployment Compensation	136.58	136.45		273.03
260 Workers' Compensation	332.62	327.64		660.26
292 Health Savings Accounts	1,400.00	1,400.00		2,800.00
<b>Total Personnel Services – Employee Benefits</b>	<b>\$15,522.63</b>	<b>\$15,480.97</b>		<b>\$31,003.60</b>
<b>300 <u>Purchased Professional and Technical Services</u></b>				
329 Professional Educational Services – Other	24,920.79	26,427.43		51,348.22
<b>Total Purchased Professional and Technical Services</b>	<b>\$24,920.79</b>	<b>\$26,427.43</b>		<b>\$51,348.22</b>
<b>600 <u>Supplies</u></b>				
610 General Supplies	1,172.40			1,172.40
<b>Total Supplies</b>	<b>\$1,172.40</b>			<b>\$1,172.40</b>
<b>Total 1220 Sensory Support</b>	<b>\$69,385.63</b>	<b>\$69,277.97</b>		<b>\$138,663.60</b>

LEA : 111312503     Huntingdon Area SD

Printed 2/13/2023 9:22:50 AM

General Fund (10)

1230 Emotional Support

	<u>Elementary</u>	<u>Secondary</u>	<u>Federal</u>	<u>Total</u>
<b>100 <u>Personnel Services – Salaries</u></b>				
100 Personnel Services – Salaries	296,621.87	190,544.04	6,180.00	493,345.91
<b>Total Personnel Services – Salaries</b>	<b>\$296,621.87</b>	<b>\$190,544.04</b>	<b>\$6,180.00</b>	<b>\$493,345.91</b>
<b>200 <u>Personnel Services – Employee Benefits</u></b>				
210 Group Insurance – Contracted Provider	97,528.31	100,103.98		197,632.29
220 Social Security Contributions	22,203.52	13,673.41		35,876.93
230 PSERS Retirement Contributions	106,053.98	66,576.32		172,630.30
250 Unemployment Compensation	1,206.43	551.48		1,757.91
260 Workers' Compensation	3,633.46	2,286.40		5,919.86
292 Health Savings Accounts	6,908.91	9,788.38		16,697.29
<b>Total Personnel Services – Employee Benefits</b>	<b>\$237,534.61</b>	<b>\$192,979.97</b>		<b>\$430,514.58</b>
<b>300 <u>Purchased Professional and Technical Services</u></b>				
329 Professional Educational Services – Other	70,075.00	333,708.58		403,783.58
<b>Total Purchased Professional and Technical Services</b>	<b>\$70,075.00</b>	<b>\$333,708.58</b>		<b>\$403,783.58</b>
<b>600 <u>Supplies</u></b>				
610 General Supplies	174.25	208.52		382.77
<b>Total Supplies</b>	<b>\$174.25</b>	<b>\$208.52</b>		<b>\$382.77</b>
<b>Total 1230 Emotional Support</b>	<b>\$604,405.73</b>	<b>\$717,441.11</b>	<b>\$6,180.00</b>	<b>\$1,328,026.84</b>

LEA : 111312503     Huntingdon Area SD

Printed 2/13/2023 9:22:50 AM

General Fund (10)

1240 Academic Support

	<u>Elementary</u>	<u>Secondary</u>	<u>Federal</u>	<u>Total</u>
<b>100 <u>Personnel Services – Salaries</u></b>				
100 Personnel Services – Salaries	700,630.59	474,026.86		1,174,657.45
<b>Total Personnel Services – Salaries</b>	<b>\$700,630.59</b>	<b>\$474,026.86</b>		<b>\$1,174,657.45</b>
<b>200 <u>Personnel Services – Employee Benefits</u></b>				
210 Group Insurance – Contracted Provider	203,167.35	98,690.77		301,858.12
220 Social Security Contributions	51,143.70	34,905.85		86,049.55
230 PSERS Retirement Contributions	244,660.33	165,625.04		410,285.37
250 Unemployment Compensation	2,248.69	1,000.33		3,249.02
260 Workers' Compensation	8,407.15	5,688.25		14,095.40
292 Health Savings Accounts	17,929.99	7,702.80		25,632.79
<b>Total Personnel Services – Employee Benefits</b>	<b>\$527,557.21</b>	<b>\$313,613.04</b>		<b>\$841,170.25</b>
<b>300 <u>Purchased Professional and Technical Services</u></b>				
329 Professional Educational Services – Other	625.00			625.00
<b>Total Purchased Professional and Technical Services</b>	<b>\$625.00</b>			<b>\$625.00</b>
<b>500 <u>Other Purchased Services</u></b>				
510 Student Transportation Services		5,552.85		5,552.85
580 Travel		165.00		165.00
<b>Total Other Purchased Services</b>		<b>\$5,717.85</b>		<b>\$5,717.85</b>
<b>600 <u>Supplies</u></b>				
610 General Supplies	5,753.68	1,760.02		7,513.70
640 Books and Periodicals	11,004.81	10,008.05		21,012.86
650 Supplies & Fees – Technology Related	108.00			108.00
<b>Total Supplies</b>	<b>\$16,866.49</b>	<b>\$11,768.07</b>		<b>\$28,634.56</b>
<b>Total 1240 Academic Support</b>	<b>\$1,245,679.29</b>	<b>\$805,125.82</b>		<b>\$2,050,805.11</b>

LEA : 111312503     Huntingdon Area SD

Printed 2/13/2023 9:22:50 AM

General Fund (10)

1241 Learning Support – Public	Elementary	Secondary	Federal	Total
<b>100 Personnel Services – Salaries</b>				
100 Personnel Services – Salaries	644,403.91	373,014.65		1,017,418.56
<b>Total Personnel Services – Salaries</b>	<b>\$644,403.91</b>	<b>\$373,014.65</b>		<b>\$1,017,418.56</b>
<b>200 Personnel Services – Employee Benefits</b>				
210 Group Insurance – Contracted Provider	200,441.91	93,031.69		293,473.60
220 Social Security Contributions	46,872.79	27,284.67		74,157.46
230 PSERS Retirement Contributions	225,014.64	130,331.39		355,346.03
250 Unemployment Compensation	2,157.52	868.06		3,025.58
260 Workers' Compensation	7,732.53	4,476.04		12,208.57
292 Health Savings Accounts	17,652.79	7,140.00		24,792.79
<b>Total Personnel Services – Employee Benefits</b>	<b>\$499,872.18</b>	<b>\$263,131.85</b>		<b>\$763,004.03</b>
<b>300 Purchased Professional and Technical Services</b>				
329 Professional Educational Services – Other	625.00			625.00
<b>Total Purchased Professional and Technical Services</b>	<b>\$625.00</b>			<b>\$625.00</b>
<b>500 Other Purchased Services</b>				
510 Student Transportation Services		28.74		28.74
<b>Total Other Purchased Services</b>		<b>\$28.74</b>		<b>\$28.74</b>
<b>600 Supplies</b>				
610 General Supplies	5,753.68	1,760.02		7,513.70
640 Books and Periodicals	11,004.81	10,008.05		21,012.86
650 Supplies & Fees – Technology Related	108.00			108.00
<b>Total Supplies</b>	<b>\$16,866.49</b>	<b>\$11,768.07</b>		<b>\$28,634.56</b>
<b>Total 1241 Learning Support – Public</b>	<b>\$1,161,767.58</b>	<b>\$647,943.31</b>		<b>\$1,809,710.89</b>

LEA : 111312503     Huntingdon Area SD

Printed 2/13/2023 9:22:50 AM

General Fund (10)

1243 Gifted Support

	<u>Elementary</u>	<u>Secondary</u>	<u>Federal</u>	<u>Total</u>
<b>100 <u>Personnel Services – Salaries</u></b>				
100 Personnel Services – Salaries	56,226.68	101,012.21		157,238.89
<b>Total Personnel Services – Salaries</b>	<b>\$56,226.68</b>	<b>\$101,012.21</b>		<b>\$157,238.89</b>
<b>200 <u>Personnel Services – Employee Benefits</u></b>				
210 Group Insurance – Contracted Provider	2,725.44	5,659.08		8,384.52
220 Social Security Contributions	4,270.91	7,621.18		11,892.09
230 PSERS Retirement Contributions	19,645.69	35,293.65		54,939.34
250 Unemployment Compensation	91.17	132.27		223.44
260 Workers' Compensation	674.62	1,212.21		1,886.83
292 Health Savings Accounts	277.20	562.80		840.00
<b>Total Personnel Services – Employee Benefits</b>	<b>\$27,685.03</b>	<b>\$50,481.19</b>		<b>\$78,166.22</b>
<b>500 <u>Other Purchased Services</u></b>				
510 Student Transportation Services		5,524.11		5,524.11
580 Travel		165.00		165.00
<b>Total Other Purchased Services</b>		<b>\$5,689.11</b>		<b>\$5,689.11</b>
<b>Total 1243 Gifted Support</b>	<b>\$83,911.71</b>	<b>\$157,182.51</b>		<b>\$241,094.22</b>

LEA : 111312503     Huntingdon Area SD

Printed 2/13/2023 9:22:50 AM

General Fund (10)

1260 Physical Support

	<u>Elementary</u>	<u>Secondary</u>	<u>Federal</u>	<u>Total</u>
<b>100 <u>Personnel Services – Salaries</u></b>				
100 Personnel Services – Salaries	30,516.47	31,116.22		61,632.69
<b>Total Personnel Services – Salaries</b>	<b>\$30,516.47</b>	<b>\$31,116.22</b>		<b>\$61,632.69</b>
<b>200 <u>Personnel Services – Employee Benefits</u></b>				
210 Group Insurance – Contracted Provider	9,470.07	9,906.12		19,376.19
220 Social Security Contributions	2,251.11	2,250.97		4,502.08
230 PSERS Retirement Contributions	10,871.99	10,871.99		21,743.98
250 Unemployment Compensation	50.02	49.97		99.99
260 Workers' Compensation	373.50	373.27		746.77
292 Health Savings Accounts	840.00	840.00		1,680.00
<b>Total Personnel Services – Employee Benefits</b>	<b>\$23,856.69</b>	<b>\$24,292.32</b>		<b>\$48,149.01</b>
<b>600 <u>Supplies</u></b>				
610 General Supplies	176.51			176.51
<b>Total Supplies</b>	<b>\$176.51</b>			<b>\$176.51</b>
<b>Total 1260 Physical Support</b>	<b>\$54,549.67</b>	<b>\$55,408.54</b>		<b>\$109,958.21</b>

LEA : 111312503     Huntingdon Area SD

Printed 2/13/2023 9:22:50 AM

<b>General Fund (10)</b>				
<b>1290 Special Programs - Other Support</b>	<b><u>Elementary</u></b>	<b><u>Secondary</u></b>	<b><u>Federal</u></b>	<b><u>Total</u></b>
<b>100 <u>Personnel Services – Salaries</u></b>				
100 Personnel Services – Salaries	36,864.04	19,723.55	7,728.00	64,315.59
<b>Total Personnel Services – Salaries</b>	<b>\$36,864.04</b>	<b>\$19,723.55</b>	<b>\$7,728.00</b>	<b>\$64,315.59</b>
<b>200 <u>Personnel Services – Employee Benefits</u></b>				
210 Group Insurance – Contracted Provider			436.17	436.17
220 Social Security Contributions	7,216.11	6,205.10	791.55	14,212.76
230 PSERS Retirement Contributions	13,920.20	8,431.78	781.00	23,132.98
250 Unemployment Compensation	50.16	61.01	8.94	120.11
260 Workers' Compensation	580.81	289.59		870.40
<b>Total Personnel Services – Employee Benefits</b>	<b>\$21,767.28</b>	<b>\$14,987.48</b>	<b>\$2,017.66</b>	<b>\$38,772.42</b>
<b>300 <u>Purchased Professional and Technical Services</u></b>				
322 Professional Educational Services – lus	69,906.98	12,827.95		82,734.93
329 Professional Educational Services – Other	2,768.00	1,049.00		3,817.00
330 Other Professional Services	107,046.00			107,046.00
<b>Total Purchased Professional and Technical Services</b>	<b>\$179,720.98</b>	<b>\$13,876.95</b>		<b>\$193,597.93</b>
<b>500 <u>Other Purchased Services</u></b>				
510 Student Transportation Services		661.25		661.25
561 Tuition To Other School Districts Within the State		19,257.32		19,257.32
562 Tuition To Pennsylvania Charter Schools		929,291.46	495,902.10	1,425,193.56
567 Tuition To Approved Private Schools (APS) and PA Chartered Schools for the Deaf and Blind	73,603.88			73,603.88
580 Travel	832.60			832.60
<b>Total Other Purchased Services</b>	<b>\$74,436.48</b>	<b>\$949,210.03</b>	<b>\$495,902.10</b>	<b>\$1,519,548.61</b>
<b>600 <u>Supplies</u></b>				
610 General Supplies			500.00	500.00
630 Food			266.68	266.68
<b>Total Supplies</b>			<b>\$766.68</b>	<b>\$766.68</b>
<b>Total 1290 Special Programs - Other Support</b>	<b>\$312,788.78</b>	<b>\$997,798.01</b>	<b>\$506,414.44</b>	<b>\$1,817,001.23</b>



LEA : 111312503     Huntingdon Area SD

Printed 2/13/2023 9:22:50 AM

General Fund (10)

1300 Vocational Education

	<u>Elementary</u>	<u>Secondary</u>	<u>Federal</u>	<u>Total</u>
<b>100 <u>Personnel Services – Salaries</u></b>				
100 Personnel Services – Salaries		211,048.02		211,048.02
<b>Total Personnel Services – Salaries</b>		<b>\$211,048.02</b>		<b>\$211,048.02</b>
<b>200 <u>Personnel Services – Employee Benefits</u></b>				
210 Group Insurance – Contracted Provider		71,736.24		71,736.24
220 Social Security Contributions		15,262.11		15,262.11
230 PSERS Retirement Contributions		73,670.32		73,670.32
250 Unemployment Compensation		399.98		399.98
260 Workers' Compensation		2,532.57		2,532.57
292 Health Savings Accounts		5,040.00		5,040.00
<b>Total Personnel Services – Employee Benefits</b>		<b>\$168,641.22</b>		<b>\$168,641.22</b>
<b>500 <u>Other Purchased Services</u></b>				
510 Student Transportation Services		295.97		295.97
564 Tuition To Career and Technology Centers		610,587.96		610,587.96
<b>Total Other Purchased Services</b>		<b>\$610,883.93</b>		<b>\$610,883.93</b>
<b>600 <u>Supplies</u></b>				
610 General Supplies		15,231.06		15,231.06
640 Books and Periodicals		620.00		620.00
650 Supplies & Fees – Technology Related		3,354.00		3,354.00
<b>Total Supplies</b>		<b>\$19,205.06</b>		<b>\$19,205.06</b>
<b>Total 1300 Vocational Education</b>		<b>\$1,009,778.23</b>		<b>\$1,009,778.23</b>

LEA : 111312503     Huntingdon Area SD

Printed 2/13/2023 9:22:50 AM

General Fund (10)

1400 Other Instructional Programs – Elementary / Secondary	<u>Elementary</u>	<u>Secondary</u>	<u>Federal</u>	<u>Total</u>
<b>100 <u>Personnel Services – Salaries</u></b>				
100 Personnel Services – Salaries		11,852.03	81,424.00	93,276.03
<b>Total Personnel Services – Salaries</b>		<b>\$11,852.03</b>	<b>\$81,424.00</b>	<b>\$93,276.03</b>
<b>200 <u>Personnel Services – Employee Benefits</u></b>				
210 Group Insurance – Contracted Provider		1,903.27		1,903.27
220 Social Security Contributions		863.81	6,071.56	6,935.37
230 PSERS Retirement Contributions		4,141.09	28,449.52	32,590.61
250 Unemployment Compensation		19.94	151.80	171.74
260 Workers' Compensation		142.23	977.09	1,119.32
292 Health Savings Accounts		1,253.58		1,253.58
<b>Total Personnel Services – Employee Benefits</b>		<b>\$8,323.92</b>	<b>\$35,649.97</b>	<b>\$43,973.89</b>
<b>300 <u>Purchased Professional and Technical Services</u></b>				
322 Professional Educational Services – Ius	30,240.00	21,655.13	19,680.00	71,575.13
323 Professional Educational Services – Other Educational Agencies		133,276.66		133,276.66
329 Professional Educational Services – Other		13,547.50		13,547.50
<b>Total Purchased Professional and Technical Services</b>	<b>\$30,240.00</b>	<b>\$168,479.29</b>	<b>\$19,680.00</b>	<b>\$218,399.29</b>
<b>500 <u>Other Purchased Services</u></b>				
561 Tuition To Other School Districts Within the State		2,424.86		2,424.86
<b>Total Other Purchased Services</b>		<b>\$2,424.86</b>		<b>\$2,424.86</b>
<b>600 <u>Supplies</u></b>				
610 General Supplies			234.74	234.74
620 Energy		229.92		229.92
<b>Total Supplies</b>		<b>\$229.92</b>	<b>\$234.74</b>	<b>\$464.66</b>
<b>Total 1400 Other Instructional Programs – Elementary / Secondary</b>	<b>\$30,240.00</b>	<b>\$191,310.02</b>	<b>\$136,988.71</b>	<b>\$358,538.73</b>

LEA : 111312503     Huntingdon Area SD

Printed 2/13/2023 9:22:50 AM

General Fund (10)

1410 Drivers' Education

	<u>Elementary</u>	<u>Secondary</u>	<u>Federal</u>	<u>Total</u>
<b>100 <u>Personnel Services – Salaries</u></b>				
100 Personnel Services – Salaries		1,458.00		1,458.00
<b>Total Personnel Services – Salaries</b>		<b>\$1,458.00</b>		<b>\$1,458.00</b>
<b>200 <u>Personnel Services – Employee Benefits</u></b>				
220 Social Security Contributions		111.53		111.53
230 PSERS Retirement Contributions		509.43		509.43
250 Unemployment Compensation		14.58		14.58
260 Workers' Compensation		17.49		17.49
<b>Total Personnel Services – Employee Benefits</b>		<b>\$653.03</b>		<b>\$653.03</b>
<b>600 <u>Supplies</u></b>				
620 Energy		229.92		229.92
<b>Total Supplies</b>		<b>\$229.92</b>		<b>\$229.92</b>
<b>Total 1410 Drivers' Education</b>		<b>\$2,340.95</b>		<b>\$2,340.95</b>

LEA : 111312503     Huntingdon Area SD

Printed 2/13/2023 9:22:50 AM

General Fund (10)

1440 Alternative Regular Education Programs	<u>Elementary</u>	<u>Secondary</u>	<u>Federal</u>	<u>Total</u>
<b>100 <u>Personnel Services – Salaries</u></b>				
100 Personnel Services – Salaries		4,338.78		4,338.78
<b>Total Personnel Services – Salaries</b>		<b>\$4,338.78</b>		<b>\$4,338.78</b>
<b>200 <u>Personnel Services – Employee Benefits</u></b>				
210 Group Insurance – Contracted Provider		1,903.27		1,903.27
220 Social Security Contributions		301.38		301.38
230 PSERS Retirement Contributions		1,515.98		1,515.98
260 Workers' Compensation		52.08		52.08
292 Health Savings Accounts		1,253.58		1,253.58
<b>Total Personnel Services – Employee Benefits</b>		<b>\$5,026.29</b>		<b>\$5,026.29</b>
<b>300 <u>Purchased Professional and Technical Services</u></b>				
322 Professional Educational Services – Ius	30,240.00	21,655.13	14,660.00	66,555.13
323 Professional Educational Services – Other Educational Agencies		133,276.66		133,276.66
<b>Total Purchased Professional and Technical Services</b>	<b>\$30,240.00</b>	<b>\$154,931.79</b>	<b>\$14,660.00</b>	<b>\$199,831.79</b>
<b>500 <u>Other Purchased Services</u></b>				
561 Tuition To Other School Districts Within the State		2,424.86		2,424.86
<b>Total Other Purchased Services</b>		<b>\$2,424.86</b>		<b>\$2,424.86</b>
<b>Total 1440 Alternative Regular Education Programs</b>	<b>\$30,240.00</b>	<b>\$166,721.72</b>	<b>\$14,660.00</b>	<b>\$211,621.72</b>

LEA : 111312503     Huntingdon Area SD

Printed 2/13/2023 9:22:50 AM

General Fund (10)

1441 Adjudicated / Court-Placed Programs	<u>Elementary</u>	<u>Secondary</u>	<u>Federal</u>	<u>Total</u>
<b>100 <u>Personnel Services – Salaries</u></b>				
100 Personnel Services – Salaries		891.00		891.00
<b>Total Personnel Services – Salaries</b>		<b>\$891.00</b>		<b>\$891.00</b>
<b>200 <u>Personnel Services – Employee Benefits</u></b>				
220 Social Security Contributions		66.43		66.43
230 PSERS Retirement Contributions		311.32		311.32
260 Workers’ Compensation		10.68		10.68
<b>Total Personnel Services – Employee Benefits</b>		<b>\$388.43</b>		<b>\$388.43</b>
<b>500 <u>Other Purchased Services</u></b>				
561 Tuition To Other School Districts Within the State		2,424.86		2,424.86
<b>Total Other Purchased Services</b>		<b>\$2,424.86</b>		<b>\$2,424.86</b>
<b>Total 1441 Adjudicated / Court-Placed Programs</b>		<b>\$3,704.29</b>		<b>\$3,704.29</b>

LEA : 111312503     Huntingdon Area SD

Printed 2/13/2023 9:22:50 AM

General Fund (10)

1442 Alternative Education Programs	<u>Elementary</u>	<u>Secondary</u>	<u>Federal</u>	<u>Total</u>
<b>100 <u>Personnel Services – Salaries</u></b>				
100 Personnel Services – Salaries		3,447.78		3,447.78
<b>Total Personnel Services – Salaries</b>		<b>\$3,447.78</b>		<b>\$3,447.78</b>
<b>200 <u>Personnel Services – Employee Benefits</u></b>				
210 Group Insurance – Contracted Provider		1,903.27		1,903.27
220 Social Security Contributions		234.95		234.95
230 PSERS Retirement Contributions		1,204.66		1,204.66
260 Workers' Compensation		41.40		41.40
292 Health Savings Accounts		1,253.58		1,253.58
<b>Total Personnel Services – Employee Benefits</b>		<b>\$4,637.86</b>		<b>\$4,637.86</b>
<b>300 <u>Purchased Professional and Technical Services</u></b>				
322 Professional Educational Services – lus	30,240.00	21,655.13	14,660.00	66,555.13
323 Professional Educational Services – Other Educational Agencies		133,276.66		133,276.66
<b>Total Purchased Professional and Technical Services</b>	<b>\$30,240.00</b>	<b>\$154,931.79</b>	<b>\$14,660.00</b>	<b>\$199,831.79</b>
<b>Total 1442 Alternative Education Programs</b>	<b>\$30,240.00</b>	<b>\$163,017.43</b>	<b>\$14,660.00</b>	<b>\$207,917.43</b>

LEA : 111312503     Huntingdon Area SD

Printed 2/13/2023 9:22:50 AM

General Fund (10)

1450 Instructional Programs Outside the Established School Day	<u>Elementary</u>	<u>Secondary</u>	<u>Federal</u>	<u>Total</u>
100 <u>Personnel Services – Salaries</u>				
100 Personnel Services – Salaries		1,768.50	54.00	1,822.50
Total Personnel Services – Salaries		\$1,768.50	\$54.00	\$1,822.50
200 <u>Personnel Services – Employee Benefits</u>				
220 Social Security Contributions		128.62	3.73	132.35
230 PSERS Retirement Contributions		617.91	18.87	636.78
250 Unemployment Compensation		3.92		3.92
260 Workers' Compensation		21.22	0.65	21.87
Total Personnel Services – Employee Benefits		\$771.67	\$23.25	\$794.92
600 <u>Supplies</u>				
610 General Supplies			234.74	234.74
Total Supplies			\$234.74	\$234.74
Total 1450 Instructional Programs Outside the Established School Day		\$2,540.17	\$311.99	\$2,852.16

LEA : 111312503     Huntingdon Area SD

Printed 2/13/2023 9:22:50 AM

General Fund (10)

1490 Additional Other Instructional Programs

	<u>Elementary</u>	<u>Secondary</u>	<u>Federal</u>	<u>Total</u>
<b>100 <u>Personnel Services – Salaries</u></b>				
100 Personnel Services – Salaries		4,286.75	81,370.00	85,656.75
<b>Total Personnel Services – Salaries</b>		<b>\$4,286.75</b>	<b>\$81,370.00</b>	<b>\$85,656.75</b>
<b>200 <u>Personnel Services – Employee Benefits</u></b>				
220 Social Security Contributions		322.28	6,067.83	6,390.11
230 PSERS Retirement Contributions		1,497.77	28,430.65	29,928.42
250 Unemployment Compensation		1.44	151.80	153.24
260 Workers' Compensation		51.44	976.44	1,027.88
<b>Total Personnel Services – Employee Benefits</b>		<b>\$1,872.93</b>	<b>\$35,626.72</b>	<b>\$37,499.65</b>
<b>300 <u>Purchased Professional and Technical Services</u></b>				
322 Professional Educational Services – Ius			5,020.00	5,020.00
329 Professional Educational Services – Other		13,547.50		13,547.50
<b>Total Purchased Professional and Technical Services</b>		<b>\$13,547.50</b>	<b>\$5,020.00</b>	<b>\$18,567.50</b>
<b>Total 1490 Additional Other Instructional Programs</b>		<b>\$19,707.18</b>	<b>\$122,016.72</b>	<b>\$141,723.90</b>



LEA : 111312503     Huntingdon Area SD

Printed 2/13/2023 9:22:50 AM

General Fund (10)

1800 Pre-Kindergarten

	<u>Elementary</u>	<u>Secondary</u>	<u>Federal</u>	<u>Total</u>
<b>100 <u>Personnel Services – Salaries</u></b>				
100 Personnel Services – Salaries				79,637.35
<b>Total Personnel Services – Salaries</b>				<b>\$79,637.35</b>
<b>200 <u>Personnel Services – Employee Benefits</u></b>				
210 Group Insurance – Contracted Provider				39,251.16
220 Social Security Contributions				5,913.38
230 PSERS Retirement Contributions				27,825.32
250 Unemployment Compensation				302.04
260 Workers' Compensation				955.45
292 Health Savings Accounts				3,360.00
<b>Total Personnel Services – Employee Benefits</b>				<b>\$77,607.35</b>
<b>300 <u>Purchased Professional and Technical Services</u></b>				
329 Professional Educational Services – Other				1,053.40
<b>Total Purchased Professional and Technical Services</b>				<b>\$1,053.40</b>
<b>500 <u>Other Purchased Services</u></b>				
510 Student Transportation Services				8,256.00
549 Other Advertising/Public Relations				349.15
580 Travel				100.00
<b>Total Other Purchased Services</b>				<b>\$8,705.15</b>
<b>600 <u>Supplies</u></b>				
610 General Supplies				19,850.21
630 Food				2,272.87
<b>Total Supplies</b>				<b>\$22,123.08</b>
<b>Total 1800 Pre-Kindergarten</b>				<b>\$189,126.33</b>

LEA : 111312503     Huntingdon Area SD

Printed 2/13/2023 9:22:50 AM

General Fund (10)

1801 Pre-K Instruction

Elementary                      Secondary                      Federal                      Total

<b>100 <u>Personnel Services – Salaries</u></b>				
100 Personnel Services – Salaries				79,637.35
<b>Total Personnel Services – Salaries</b>				<b>\$79,637.35</b>
<b>200 <u>Personnel Services – Employee Benefits</u></b>				
210 Group Insurance – Contracted Provider				39,251.16
220 Social Security Contributions				5,913.38
230 PSERS Retirement Contributions				27,825.32
250 Unemployment Compensation				302.04
260 Workers' Compensation				955.45
292 Health Savings Accounts				3,360.00
<b>Total Personnel Services – Employee Benefits</b>				<b>\$77,607.35</b>
<b>300 <u>Purchased Professional and Technical Services</u></b>				
329 Professional Educational Services – Other				1,053.40
<b>Total Purchased Professional and Technical Services</b>				<b>\$1,053.40</b>
<b>500 <u>Other Purchased Services</u></b>				
549 Other Advertising/Public Relations				349.15
<b>Total Other Purchased Services</b>				<b>\$349.15</b>
<b>600 <u>Supplies</u></b>				
610 General Supplies				19,850.21
<b>Total Supplies</b>				<b>\$19,850.21</b>
<b>Total 1801 Pre-K Instruction</b>				<b>\$178,497.46</b>

LEA : 111312503     Huntingdon Area SD

Printed 2/13/2023 9:22:50 AM

General Fund (10)

1804 Pre-K Student Transportation	<u>Elementary</u>	<u>Secondary</u>	<u>Federal</u>	<u>Total</u>
500 <u>Other Purchased Services</u>				
510 Student Transportation Services				8,256.00
Total Other Purchased Services				\$8,256.00
Total 1804 Pre-K Student Transportation				\$8,256.00

LEA : 111312503     Huntingdon Area SD

Printed 2/13/2023 9:22:50 AM

General Fund (10)				
1805 Pre-K Food Services	<u>Elementary</u>	<u>Secondary</u>	<u>Federal</u>	<u>Total</u>
600 <u>Supplies</u>				
630 Food				2,272.87
Total Supplies				\$2,272.87
Total 1805 Pre-K Food Services				\$2,272.87

LEA : 111312503     Huntingdon Area SD

Printed 2/13/2023 9:22:50 AM

General Fund (10)				
1806 Pre-K Professional Development	<u>Elementary</u>	<u>Secondary</u>	<u>Federal</u>	<u>Total</u>
500 <u>Other Purchased Services</u>				
580 Travel				100.00
Total Other Purchased Services				\$100.00
Total 1806 Pre-K Professional Development				\$100.00

LEA : 111312503     Huntingdon Area SD

Printed 2/13/2023 9:22:54 AM

General Fund (10)

2000 Support Services

Total

100	<u>Personnel Services – Salaries</u>	
100	Personnel Services – Salaries	2,802,190.13
Total Personnel Services – Salaries		\$2,802,190.13
200	<u>Personnel Services – Employee Benefits</u>	
210	Group Insurance – Contracted Provider	735,779.49
220	Social Security Contributions	207,165.51
230	PSERS Retirement Contributions	964,593.09
240	Tuition Reimbursement	120,593.32
250	Unemployment Compensation	7,499.23
260	Workers' Compensation	33,821.18
291	Other Retirement Plans	56,036.75
292	Health Savings Accounts	57,953.61
Total Personnel Services – Employee Benefits		\$2,183,442.18
300	<u>Purchased Professional and Technical Services</u>	
322	Professional Educational Services – Ius	85,536.71
329	Professional Educational Services – Other	57,002.96
330	Other Professional Services	237,311.33
350	Security / Safety Services	46,002.56
Total Purchased Professional and Technical Services		\$425,853.56
400	<u>Purchased Property Services</u>	
410	Cleaning Services	32,102.86
420	Utility Services	84,250.60
430	Repairs and Maintenance Services	133,754.01
440	Rentals	102,595.33
460	Extermination Services	5,066.64
Total Purchased Property Services		\$357,769.44
500	<u>Other Purchased Services</u>	
510	Student Transportation Services	1,710.97
513	Contracted Carriers	2,187,882.22
516	Student Transportation Services From the IU	49,643.81
520	Insurance – General	7,293.00
522	Automotive Liability Insurance	2,297.00
523	General Property and Liability Insurance	83,086.00
530	Communications	44,328.03
549	Other Advertising/Public Relations	18,111.06
580	Travel	3,801.41
Total Other Purchased Services		\$2,398,153.50
600	<u>Supplies</u>	
610	General Supplies	347,606.84
620	Energy	453,553.70
640	Books and Periodicals	199,488.05
650	Supplies & Fees – Technology Related	1,354,205.53
Total Supplies		\$2,354,854.12

LEA : 111312503     Huntingdon Area SD

Printed 2/13/2023 9:22:54 AM

<b>General Fund (10)</b>	
<b>2000 Support Services</b>	<b><u>Total</u></b>
<b>700 <u>Property</u></b>	
790 Other Property	50,963.78
<b>Total Property</b>	<b>\$50,963.78</b>
<b>800 <u>Other Objects</u></b>	
810 Dues and Fees	229,365.32
820 Claims and Judgments Against the LEA	43,000.00
890 Miscellaneous Expenditures	5,467.71
<b>Total Other Objects</b>	<b>\$277,833.03</b>
<b>Total 2000 Support Services</b>	<b>\$10,851,059.74</b>

LEA : 111312503     Huntingdon Area SD

Printed 2/13/2023 9:22:54 AM

General Fund (10)

2100 Support Services – Students

	Elementary	Secondary	Federal	Total
<b>100 <u>Personnel Services – Salaries</u></b>				
100 Personnel Services – Salaries	148,532.03	252,993.75		401,525.78
<b>Total Personnel Services – Salaries</b>	<b>\$148,532.03</b>	<b>\$252,993.75</b>		<b>\$401,525.78</b>
<b>200 <u>Personnel Services – Employee Benefits</u></b>				
210 Group Insurance – Contracted Provider	58,393.55	32,777.72		91,171.27
220 Social Security Contributions	10,781.88	18,977.68		29,759.56
230 PSERS Retirement Contributions	51,781.53	88,090.05		139,871.58
250 Unemployment Compensation	272.11	588.60		860.71
260 Workers' Compensation	1,791.61	3,035.46		4,827.07
291 Other Retirement Plans	286.00	286.00		572.00
292 Health Savings Accounts	4,200.00	2,520.00		6,720.00
<b>Total Personnel Services – Employee Benefits</b>	<b>\$127,506.68</b>	<b>\$146,275.51</b>		<b>\$273,782.19</b>
<b>300 <u>Purchased Professional and Technical Services</u></b>				
322 Professional Educational Services – Ius				85,536.71
329 Professional Educational Services – Other	8,000.00		18,000.00	26,000.00
330 Other Professional Services	4,757.50			4,757.50
<b>Total Purchased Professional and Technical Services</b>	<b>\$12,757.50</b>		<b>\$18,000.00</b>	<b>\$116,294.21</b>
<b>500 <u>Other Purchased Services</u></b>				
510 Student Transportation Services		1,710.97		1,710.97
580 Travel				176.08
<b>Total Other Purchased Services</b>		<b>\$1,710.97</b>		<b>\$1,887.05</b>
<b>600 <u>Supplies</u></b>				
610 General Supplies	1,193.60	1,156.12		2,349.72
640 Books and Periodicals	321.15	2,172.00		2,493.15
650 Supplies & Fees – Technology Related	4,888.50	4,888.50		9,777.00
<b>Total Supplies</b>	<b>\$6,403.25</b>	<b>\$8,216.62</b>		<b>\$14,619.87</b>
<b>800 <u>Other Objects</u></b>				
810 Dues and Fees				955.00
<b>Total Other Objects</b>				<b>\$955.00</b>
<b>Total 2100 Support Services – Students</b>	<b>\$295,199.46</b>	<b>\$409,196.85</b>	<b>\$18,000.00</b>	<b>\$809,064.10</b>



LEA : 111312503     Huntingdon Area SD

Printed 2/13/2023 9:22:54 AM

General Fund (10)

2110 Supervision of Student Services	<u>Elementary</u>	<u>Secondary</u>	<u>Federal</u>	<u>Total</u>
<b>100 <u>Personnel Services – Salaries</u></b>				
100 Personnel Services – Salaries	16,260.92	17,005.40		33,266.32
<b>Total Personnel Services – Salaries</b>	<b>\$16,260.92</b>	<b>\$17,005.40</b>		<b>\$33,266.32</b>
<b>200 <u>Personnel Services – Employee Benefits</u></b>				
210 Group Insurance – Contracted Provider	4,173.72	4,173.60		8,347.32
220 Social Security Contributions	1,233.11	1,232.98		2,466.09
230 PSERS Retirement Contributions	5,636.02	5,636.02		11,272.04
250 Unemployment Compensation	50.05	49.97		100.02
260 Workers' Compensation	204.20	203.94		408.14
291 Other Retirement Plans	286.00	286.00		572.00
292 Health Savings Accounts	420.00	420.00		840.00
<b>Total Personnel Services – Employee Benefits</b>	<b>\$12,003.10</b>	<b>\$12,002.51</b>		<b>\$24,005.61</b>
<b>600 <u>Supplies</u></b>				
650 Supplies & Fees – Technology Related	4,888.50	4,888.50		9,777.00
<b>Total Supplies</b>	<b>\$4,888.50</b>	<b>\$4,888.50</b>		<b>\$9,777.00</b>
<b>Total 2110 Supervision of Student Services</b>	<b>\$33,152.52</b>	<b>\$33,896.41</b>		<b>\$67,048.93</b>

LEA : 111312503     Huntingdon Area SD

Printed 2/13/2023 9:22:54 AM

General Fund (10)

2111 Supervision of Student Services – Head of Component	<u>Elementary</u>	<u>Secondary</u>	<u>Federal</u>	<u>Total</u>
<b>100 <u>Personnel Services – Salaries</u></b>				
100 Personnel Services – Salaries	16,260.92	17,005.40		33,266.32
<b>Total Personnel Services – Salaries</b>	<b>\$16,260.92</b>	<b>\$17,005.40</b>		<b>\$33,266.32</b>
<b>200 <u>Personnel Services – Employee Benefits</u></b>				
210 Group Insurance – Contracted Provider	4,173.72	4,173.60		8,347.32
220 Social Security Contributions	1,233.11	1,232.98		2,466.09
230 PSERS Retirement Contributions	5,636.02	5,636.02		11,272.04
250 Unemployment Compensation	50.05	49.97		100.02
260 Workers' Compensation	204.20	203.94		408.14
291 Other Retirement Plans	286.00	286.00		572.00
292 Health Savings Accounts	420.00	420.00		840.00
<b>Total Personnel Services – Employee Benefits</b>	<b>\$12,003.10</b>	<b>\$12,002.51</b>		<b>\$24,005.61</b>
<b>600 <u>Supplies</u></b>				
650 Supplies & Fees – Technology Related	4,888.50	4,888.50		9,777.00
<b>Total Supplies</b>	<b>\$4,888.50</b>	<b>\$4,888.50</b>		<b>\$9,777.00</b>
<b>Total 2111 Supervision of Student Services – Head of Component</b>	<b>\$33,152.52</b>	<b>\$33,896.41</b>		<b>\$67,048.93</b>

LEA : 111312503     Huntingdon Area SD

Printed 2/13/2023 9:22:54 AM

General Fund (10)

2120 Guidance Services

	<u>Elementary</u>	<u>Secondary</u>	<u>Federal</u>	<u>Total</u>
<b>100 <u>Personnel Services – Salaries</u></b>				
100 Personnel Services – Salaries	100,193.23	203,910.47		304,103.70
<b>Total Personnel Services – Salaries</b>	<b>\$100,193.23</b>	<b>\$203,910.47</b>		<b>\$304,103.70</b>
<b>200 <u>Personnel Services – Employee Benefits</u></b>				
210 Group Insurance – Contracted Provider	46,936.20	21,320.67		68,256.87
220 Social Security Contributions	7,138.16	15,334.40		22,472.56
230 PSERS Retirement Contributions	34,937.54	71,246.06		106,183.60
250 Unemployment Compensation	172.06	488.64		660.70
260 Workers' Compensation	1,202.42	2,446.73		3,649.15
292 Health Savings Accounts	3,360.00	1,680.00		5,040.00
<b>Total Personnel Services – Employee Benefits</b>	<b>\$93,746.38</b>	<b>\$112,516.50</b>		<b>\$206,262.88</b>
<b>300 <u>Purchased Professional and Technical Services</u></b>				
329 Professional Educational Services – Other			18,000.00	18,000.00
330 Other Professional Services	4,757.50			4,757.50
<b>Total Purchased Professional and Technical Services</b>	<b>\$4,757.50</b>		<b>\$18,000.00</b>	<b>\$22,757.50</b>
<b>500 <u>Other Purchased Services</u></b>				
510 Student Transportation Services		1,710.97		1,710.97
<b>Total Other Purchased Services</b>		<b>\$1,710.97</b>		<b>\$1,710.97</b>
<b>600 <u>Supplies</u></b>				
610 General Supplies	397.47	360.00		757.47
640 Books and Periodicals	321.15	2,172.00		2,493.15
<b>Total Supplies</b>	<b>\$718.62</b>	<b>\$2,532.00</b>		<b>\$3,250.62</b>
<b>Total 2120 Guidance Services</b>	<b>\$199,415.73</b>	<b>\$320,669.94</b>	<b>\$18,000.00</b>	<b>\$538,085.67</b>

LEA : 111312503     Huntingdon Area SD

Printed 2/13/2023 9:22:54 AM

General Fund (10)

2140 Psychological Services

	<u>Elementary</u>	<u>Secondary</u>	<u>Federal</u>	<u>Total</u>
<b>100 <u>Personnel Services – Salaries</u></b>				
100 Personnel Services – Salaries	32,077.88	32,077.88		64,155.76
<b>Total Personnel Services – Salaries</b>	<b>\$32,077.88</b>	<b>\$32,077.88</b>		<b>\$64,155.76</b>
<b>200 <u>Personnel Services – Employee Benefits</u></b>				
210 Group Insurance – Contracted Provider	7,283.63	7,283.45		14,567.08
220 Social Security Contributions	2,410.61	2,410.30		4,820.91
230 PSERS Retirement Contributions	11,207.97	11,207.97		22,415.94
250 Unemployment Compensation	50.00	49.99		99.99
260 Workers' Compensation	384.99	384.79		769.78
292 Health Savings Accounts	420.00	420.00		840.00
<b>Total Personnel Services – Employee Benefits</b>	<b>\$21,757.20</b>	<b>\$21,756.50</b>		<b>\$43,513.70</b>
<b>300 <u>Purchased Professional and Technical Services</u></b>				
329 Professional Educational Services – Other	8,000.00			8,000.00
<b>Total Purchased Professional and Technical Services</b>	<b>\$8,000.00</b>			<b>\$8,000.00</b>
<b>600 <u>Supplies</u></b>				
610 General Supplies	796.13	796.12		1,592.25
<b>Total Supplies</b>	<b>\$796.13</b>	<b>\$796.12</b>		<b>\$1,592.25</b>
<b>Total 2140 Psychological Services</b>	<b>\$62,631.21</b>	<b>\$54,630.50</b>		<b>\$117,261.71</b>

LEA : 111312503     Huntingdon Area SD

Printed 2/13/2023 9:22:54 AM

General Fund (10)

2160 Social Work Services

Elementary                      Secondary                      Federal                      Total

300 Purchased Professional and Technical Services

322 Professional Educational Services – lus 85,536.71

**Total Purchased Professional and Technical Services \$85,536.71**

**Total 2160 Social Work Services \$85,536.71**

LEA : 111312503     Huntingdon Area SD

Printed 2/13/2023 9:22:54 AM

General Fund (10)

2170 Student Accounting Services	<u>Elementary</u>	<u>Secondary</u>	<u>Federal</u>	<u>Total</u>
500 <u>Other Purchased Services</u>				
580 Travel				176.08
Total Other Purchased Services				\$176.08
800 <u>Other Objects</u>				
810 Dues and Fees				955.00
Total Other Objects				\$955.00
Total 2170 Student Accounting Services				\$1,131.08

LEA : 111312503     Huntingdon Area SD

Printed 2/13/2023 9:22:54 AM

General Fund (10)				
2200 Support Services – Instructional Staff	Elementary	Secondary	Federal	Total
100 Personnel Services – Salaries				
100 Personnel Services – Salaries	199,703.47	200,126.06		399,829.53
Total Personnel Services – Salaries	\$199,703.47	\$200,126.06		\$399,829.53
200 Personnel Services – Employee Benefits				
210 Group Insurance – Contracted Provider	48,669.88	56,859.51		105,529.39
220 Social Security Contributions	16,379.57	14,061.14		30,440.71
230 PSERS Retirement Contributions	76,574.86	63,939.30		140,514.16
240 Tuition Reimbursement	74,864.64	29,976.00		104,840.64
250 Unemployment Compensation	661.99	523.96		1,185.95
260 Workers' Compensation	2,654.20	2,316.76		4,970.96
291 Other Retirement Plans	1,507.75	1,507.75		3,015.50
292 Health Savings Accounts	3,570.00	3,570.00		7,140.00
Total Personnel Services – Employee Benefits	\$224,882.89	\$172,754.42		\$397,637.31
300 Purchased Professional and Technical Services				
329 Professional Educational Services – Other	13,537.50	13,537.50	3,927.96	31,002.96
Total Purchased Professional and Technical Services	\$13,537.50	\$13,537.50	\$3,927.96	\$31,002.96
400 Purchased Property Services				
430 Repairs and Maintenance Services		1,105.66		1,105.66
440 Rentals		(0.49)	84,577.43	84,576.94
Total Purchased Property Services		\$1,105.17	\$84,577.43	\$85,682.60
600 Supplies				
610 General Supplies	16,950.98	478.90	3,862.61	21,292.49
640 Books and Periodicals	716.06	1,820.62	193,762.20	196,298.88
650 Supplies & Fees – Technology Related	453,179.82	281,129.43	542,729.24	1,277,038.49
Total Supplies	\$470,846.86	\$283,428.95	\$740,354.05	\$1,494,629.86
700 Property				
790 Other Property		50,963.78		50,963.78
Total Property		\$50,963.78		\$50,963.78
Total 2200 Support Services – Instructional Staff	\$908,970.72	\$721,915.88	\$828,859.44	\$2,459,746.04

LEA : 111312503     Huntingdon Area SD

Printed 2/13/2023 9:22:54 AM

<b>General Fund (10)</b>				
<b>2220 Technology Support Services</b>	<b><u>Elementary</u></b>	<b><u>Secondary</u></b>	<b><u>Federal</u></b>	<b><u>Total</u></b>
<b>100 <u>Personnel Services – Salaries</u></b>				
100 Personnel Services – Salaries	64,828.58	62,510.74		127,339.32
<b>Total Personnel Services – Salaries</b>	<b>\$64,828.58</b>	<b>\$62,510.74</b>		<b>\$127,339.32</b>
<b>200 <u>Personnel Services – Employee Benefits</u></b>				
210 Group Insurance – Contracted Provider	7,930.38	7,930.01		15,860.39
220 Social Security Contributions	4,450.79	4,338.00		8,788.79
230 PSERS Retirement Contributions	20,378.63	20,204.05		40,582.68
250 Unemployment Compensation	192.24	192.17		384.41
260 Workers' Compensation	717.13	699.21		1,416.34
291 Other Retirement Plans	962.50	962.50		1,925.00
292 Health Savings Accounts	910.00	910.00		1,820.00
<b>Total Personnel Services – Employee Benefits</b>	<b>\$35,541.67</b>	<b>\$35,235.94</b>		<b>\$70,777.61</b>
<b>300 <u>Purchased Professional and Technical Services</u></b>				
329 Professional Educational Services – Other			3,927.96	3,927.96
<b>Total Purchased Professional and Technical Services</b>			<b>\$3,927.96</b>	<b>\$3,927.96</b>
<b>400 <u>Purchased Property Services</u></b>				
430 Repairs and Maintenance Services		1,105.66		1,105.66
440 Rentals		(0.49)	84,577.43	84,576.94
<b>Total Purchased Property Services</b>		<b>\$1,105.17</b>	<b>\$84,577.43</b>	<b>\$85,682.60</b>
<b>600 <u>Supplies</u></b>				
650 Supplies & Fees – Technology Related	451,720.82	278,652.33	527,801.69	1,258,174.84
<b>Total Supplies</b>	<b>\$451,720.82</b>	<b>\$278,652.33</b>	<b>\$527,801.69</b>	<b>\$1,258,174.84</b>
<b>700 <u>Property</u></b>				
790 Other Property		50,963.78		50,963.78
<b>Total Property</b>		<b>\$50,963.78</b>		<b>\$50,963.78</b>
<b>Total 2220 Technology Support Services</b>	<b>\$552,091.07</b>	<b>\$428,467.96</b>	<b>\$616,307.08</b>	<b>\$1,596,866.11</b>



LEA : 111312503     Huntingdon Area SD

Printed 2/13/2023 9:22:54 AM

General Fund (10)

2240 Computer-Assisted Instruction Support Services

Elementary

Secondary

Federal

Total

600 Supplies

610 General Supplies

214.74

214.74

Total Supplies

\$214.74

\$214.74

Total 2240 Computer-Assisted Instruction Support Services

\$214.74

\$214.74

LEA : 111312503     Huntingdon Area SD

Printed 2/13/2023 9:22:54 AM

General Fund (10)

2250 School Library Services	Elementary	Secondary	Federal	Total
<b>100 Personnel Services – Salaries</b>				
100 Personnel Services – Salaries	97,233.49	68,367.54		165,601.03
<b>Total Personnel Services – Salaries</b>	<b>\$97,233.49</b>	<b>\$68,367.54</b>		<b>\$165,601.03</b>
<b>200 Personnel Services – Employee Benefits</b>				
210 Group Insurance – Contracted Provider	24,793.04	32,983.19		57,776.23
220 Social Security Contributions	7,182.58	4,794.53		11,977.11
230 PSERS Retirement Contributions	33,903.64	23,887.56		57,791.20
250 Unemployment Compensation	295.51	200.02		495.53
260 Workers' Compensation	1,166.83	820.41		1,987.24
292 Health Savings Accounts	1,680.00	1,680.00		3,360.00
<b>Total Personnel Services – Employee Benefits</b>	<b>\$69,021.60</b>	<b>\$64,365.71</b>		<b>\$133,387.31</b>
<b>600 Supplies</b>				
610 General Supplies	285.98	(21.10)		264.88
640 Books and Periodicals	716.06	1,820.62		2,536.68
650 Supplies & Fees – Technology Related	1,459.00	2,477.10		3,936.10
<b>Total Supplies</b>	<b>\$2,461.04</b>	<b>\$4,276.62</b>		<b>\$6,737.66</b>
<b>Total 2250 School Library Services</b>	<b>\$168,716.13</b>	<b>\$137,009.87</b>		<b>\$305,726.00</b>

LEA : 111312503     Huntingdon Area SD

Printed 2/13/2023 9:22:54 AM

General Fund (10)				
2260 Instruction and Curriculum Development Services	<u>Elementary</u>	<u>Secondary</u>	<u>Federal</u>	<u>Total</u>
100 <u>Personnel Services – Salaries</u>				
100 Personnel Services – Salaries	29,857.40	68,431.78		98,289.18
<b>Total Personnel Services – Salaries</b>	<b>\$29,857.40</b>	<b>\$68,431.78</b>		<b>\$98,289.18</b>
200 <u>Personnel Services – Employee Benefits</u>				
210 Group Insurance – Contracted Provider	15,946.46	15,946.31		31,892.77
220 Social Security Contributions	4,171.85	4,866.64		9,038.49
230 PSERS Retirement Contributions	19,704.59	19,562.58		39,267.17
250 Unemployment Compensation	127.78	127.77		255.55
260 Workers' Compensation	676.82	787.34		1,464.16
291 Other Retirement Plans	545.25	545.25		1,090.50
292 Health Savings Accounts	980.00	980.00		1,960.00
<b>Total Personnel Services – Employee Benefits</b>	<b>\$42,152.75</b>	<b>\$42,815.89</b>		<b>\$84,968.64</b>
300 <u>Purchased Professional and Technical Services</u>				
329 Professional Educational Services – Other	13,537.50	13,537.50		27,075.00
<b>Total Purchased Professional and Technical Services</b>	<b>\$13,537.50</b>	<b>\$13,537.50</b>		<b>\$27,075.00</b>
600 <u>Supplies</u>				
610 General Supplies	16,665.00	500.00	3,647.87	20,812.87
640 Books and Periodicals			193,762.20	193,762.20
650 Supplies & Fees – Technology Related			14,927.55	14,927.55
<b>Total Supplies</b>	<b>\$16,665.00</b>	<b>\$500.00</b>	<b>\$212,337.62</b>	<b>\$229,502.62</b>
<b>Total 2260 Instruction and Curriculum Development Services</b>	<b>\$102,212.65</b>	<b>\$125,285.17</b>	<b>\$212,337.62</b>	<b>\$439,835.44</b>

LEA : 111312503     Huntingdon Area SD

Printed 2/13/2023 9:22:54 AM

General Fund (10)

2270 Instructional Staff Professional Development Services	<u>Elementary</u>	<u>Secondary</u>	<u>Federal</u>	<u>Total</u>
<b>100 <u>Personnel Services – Salaries</u></b>				
100 Personnel Services – Salaries	7,784.00	816.00		8,600.00
<b>Total Personnel Services – Salaries</b>	<b>\$7,784.00</b>	<b>\$816.00</b>		<b>\$8,600.00</b>
<b>200 <u>Personnel Services – Employee Benefits</u></b>				
220 Social Security Contributions	574.35	61.97		636.32
230 PSERS Retirement Contributions	2,588.00	285.11		2,873.11
240 Tuition Reimbursement	74,864.64	29,976.00		104,840.64
250 Unemployment Compensation	46.46	4.00		50.46
260 Workers' Compensation	93.42	9.80		103.22
<b>Total Personnel Services – Employee Benefits</b>	<b>\$78,166.87</b>	<b>\$30,336.88</b>		<b>\$108,503.75</b>
<b>Total 2270 Instructional Staff Professional Development Services</b>	<b>\$85,950.87</b>	<b>\$31,152.88</b>		<b>\$117,103.75</b>

LEA : 111312503     Huntingdon Area SD

Printed 2/13/2023 9:22:54 AM

General Fund (10)

2300 Support Services – Administration	Elementary	Secondary	Federal	Total
<b>100 Personnel Services – Salaries</b>				
100 Personnel Services – Salaries	307,976.37	439,888.88		913,901.52
<b>Total Personnel Services – Salaries</b>	<b>\$307,976.37</b>	<b>\$439,888.88</b>		<b>\$913,901.52</b>
<b>200 Personnel Services – Employee Benefits</b>				
210 Group Insurance – Contracted Provider	43,989.61	97,836.11		165,226.15
220 Social Security Contributions	23,453.97	33,431.36		67,743.53
230 PSERS Retirement Contributions	106,064.20	155,802.27		303,652.88
250 Unemployment Compensation	735.55	1,149.10		2,204.97
260 Workers' Compensation	3,769.67	5,392.04		10,915.03
291 Other Retirement Plans	1,603.44	7,671.56		52,449.25
292 Health Savings Accounts	4,340.01	8,819.99		15,680.00
<b>Total Personnel Services – Employee Benefits</b>	<b>\$183,956.45</b>	<b>\$310,102.43</b>		<b>\$617,871.81</b>
<b>300 Purchased Professional and Technical Services</b>				
330 Other Professional Services		12,163.00		197,941.79
<b>Total Purchased Professional and Technical Services</b>		<b>\$12,163.00</b>		<b>\$197,941.79</b>
<b>400 Purchased Property Services</b>				
440 Rentals	178.00	2,646.87		2,824.87
<b>Total Purchased Property Services</b>	<b>\$178.00</b>	<b>\$2,646.87</b>		<b>\$2,824.87</b>
<b>500 Other Purchased Services</b>				
520 Insurance – General				7,293.00
530 Communications	2,006.47	3,643.42		5,649.89
549 Other Advertising/Public Relations				18,111.06
580 Travel	350.00	271.68		921.68
<b>Total Other Purchased Services</b>	<b>\$2,356.47</b>	<b>\$3,915.10</b>		<b>\$31,975.63</b>
<b>600 Supplies</b>				
610 General Supplies	5,871.85	16,509.00		50,354.61
640 Books and Periodicals		696.02		696.02
650 Supplies & Fees – Technology Related	3,866.00	3,866.00		31,558.80
<b>Total Supplies</b>	<b>\$9,737.85</b>	<b>\$21,071.02</b>		<b>\$82,609.43</b>
<b>800 Other Objects</b>				
810 Dues and Fees				216,313.94
820 Claims and Judgments Against the LEA				43,000.00
890 Miscellaneous Expenditures				4,867.71
<b>Total Other Objects</b>				<b>\$264,181.65</b>
<b>Total 2300 Support Services – Administration</b>	<b>\$504,205.14</b>	<b>\$789,787.30</b>		<b>\$2,111,306.70</b>

LEA : 111312503     Huntingdon Area SD

Printed 2/13/2023 9:22:54 AM

<b>General Fund (10)</b>				
<b>2310 Board Services</b>	<u><b>Elementary</b></u>	<u><b>Secondary</b></u>	<u><b>Federal</b></u>	<u><b>Total</b></u>
<b>500 <u>Other Purchased Services</u></b>				
520 Insurance – General				102.00
549 Other Advertising/Public Relations				18,111.06
580 Travel				50.00
<b>Total Other Purchased Services</b>				<b>\$18,263.06</b>
<b>600 <u>Supplies</u></b>				
610 General Supplies				541.16
650 Supplies & Fees – Technology Related				12,676.07
<b>Total Supplies</b>				<b>\$13,217.23</b>
<b>800 <u>Other Objects</u></b>				
810 Dues and Fees				4,067.97
820 Claims and Judgments Against the LEA				43,000.00
890 Miscellaneous Expenditures				4,867.71
<b>Total Other Objects</b>				<b>\$51,935.68</b>
<b>Total 2310 Board Services</b>				<b>\$83,415.97</b>

LEA : 111312503     Huntingdon Area SD

Printed 2/13/2023 9:22:54 AM

General Fund (10)				
2320 Board Treasurer Services	<u>Elementary</u>	<u>Secondary</u>	<u>Federal</u>	<u>Total</u>
500 <u>Other Purchased Services</u>				
520 Insurance – General				918.00
Total Other Purchased Services				\$918.00
Total 2320 Board Treasurer Services				\$918.00

LEA : 111312503     Huntingdon Area SD

Printed 2/13/2023 9:22:54 AM

General Fund (10)				
2330 Tax Assessment and Collection Services	<u>Elementary</u>	<u>Secondary</u>	<u>Federal</u>	<u>Total</u>
100 <u>Personnel Services – Salaries</u>				
100 Personnel Services – Salaries				26,512.50
Total Personnel Services – Salaries				\$26,512.50
200 <u>Personnel Services – Employee Benefits</u>				
220 Social Security Contributions				2,028.36
250 Unemployment Compensation				20.31
260 Workers’ Compensation				318.15
Total Personnel Services – Employee Benefits				\$2,366.82
300 <u>Purchased Professional and Technical Services</u>				
330 Other Professional Services				97,663.79
Total Purchased Professional and Technical Services				\$97,663.79
500 <u>Other Purchased Services</u>				
520 Insurance – General				6,273.00
Total Other Purchased Services				\$6,273.00
600 <u>Supplies</u>				
610 General Supplies				21,794.12
Total Supplies				\$21,794.12
Total 2330 Tax Assessment and Collection Services				\$154,610.23



LEA : 111312503     Huntingdon Area SD

Printed 2/13/2023 9:22:54 AM

General Fund (10)

2350 Legal and Accounting Services	<u>Elementary</u>	<u>Secondary</u>	<u>Federal</u>	<u>Total</u>
300 <u>Purchased Professional and Technical Services</u>				
330 Other Professional Services				88,115.00
Total Purchased Professional and Technical Services				\$88,115.00
Total 2350 Legal and Accounting Services				\$88,115.00

LEA : 111312503     Huntingdon Area SD

Printed 2/13/2023 9:22:54 AM

<b>General Fund (10)</b>				
<b>2360 Office of the Superintendent / Executive Director Services</b>	<b><u>Elementary</u></b>	<b><u>Secondary</u></b>	<b><u>Federal</u></b>	<b><u>Total</u></b>
<b>100 <u>Personnel Services – Salaries</u></b>				
100 Personnel Services – Salaries				139,523.77
<b>Total Personnel Services – Salaries</b>				<b>\$139,523.77</b>
<b>200 <u>Personnel Services – Employee Benefits</u></b>				
210 Group Insurance – Contracted Provider				23,400.43
220 Social Security Contributions				8,829.84
230 PSERS Retirement Contributions				41,786.41
250 Unemployment Compensation				300.01
260 Workers' Compensation				1,435.17
291 Other Retirement Plans				43,174.25
292 Health Savings Accounts				2,520.00
<b>Total Personnel Services – Employee Benefits</b>				<b>\$121,446.11</b>
<b>500 <u>Other Purchased Services</u></b>				
580 Travel				250.00
<b>Total Other Purchased Services</b>				<b>\$250.00</b>
<b>600 <u>Supplies</u></b>				
610 General Supplies				1,299.00
<b>Total Supplies</b>				<b>\$1,299.00</b>
<b>800 <u>Other Objects</u></b>				
810 Dues and Fees				1,943.00
<b>Total Other Objects</b>				<b>\$1,943.00</b>
<b>Total 2360 Office of the Superintendent / Executive Director Services</b>				<b>\$264,461.88</b>

LEA : 111312503     Huntingdon Area SD

Printed 2/13/2023 9:22:54 AM

General Fund (10)

2380 Office of the Principal Services	Elementary	Secondary	Federal	Total
100 <u>Personnel Services – Salaries</u>				
100 Personnel Services – Salaries	307,976.37	439,888.88		747,865.25
Total Personnel Services – Salaries	\$307,976.37	\$439,888.88		\$747,865.25
200 <u>Personnel Services – Employee Benefits</u>				
210 Group Insurance – Contracted Provider	43,989.61	97,836.11		141,825.72
220 Social Security Contributions	23,453.97	33,431.36		56,885.33
230 PSERS Retirement Contributions	106,064.20	155,802.27		261,866.47
250 Unemployment Compensation	735.55	1,149.10		1,884.65
260 Workers' Compensation	3,769.67	5,392.04		9,161.71
291 Other Retirement Plans	1,603.44	7,671.56		9,275.00
292 Health Savings Accounts	4,340.01	8,819.99		13,160.00
Total Personnel Services – Employee Benefits	\$183,956.45	\$310,102.43		\$494,058.88
300 <u>Purchased Professional and Technical Services</u>				
330 Other Professional Services		12,163.00		12,163.00
Total Purchased Professional and Technical Services		\$12,163.00		\$12,163.00
400 <u>Purchased Property Services</u>				
440 Rentals	178.00	2,646.87		2,824.87
Total Purchased Property Services	\$178.00	\$2,646.87		\$2,824.87
500 <u>Other Purchased Services</u>				
530 Communications	2,006.47	3,643.42		5,649.89
580 Travel	350.00	271.68		621.68
Total Other Purchased Services	\$2,356.47	\$3,915.10		\$6,271.57
600 <u>Supplies</u>				
610 General Supplies	5,871.85	16,509.00		22,380.85
640 Books and Periodicals		696.02		696.02
650 Supplies & Fees – Technology Related	3,866.00	3,866.00		7,732.00
Total Supplies	\$9,737.85	\$21,071.02		\$30,808.87
Total 2380 Office of the Principal Services	\$504,205.14	\$789,787.30		\$1,293,992.44

LEA : 111312503     Huntingdon Area SD

Printed 2/13/2023 9:22:54 AM

General Fund (10)

2390 Other Administration Services	<u>Elementary</u>	<u>Secondary</u>	<u>Federal</u>	<u>Total</u>
600 <u>Supplies</u>				
610 General Supplies				4,339.48
650 Supplies & Fees – Technology Related				11,150.73
Total Supplies				\$15,490.21
800 <u>Other Objects</u>				
810 Dues and Fees				210,302.97
Total Other Objects				\$210,302.97
Total 2390 Other Administration Services				\$225,793.18

LEA : 111312503     Huntingdon Area SD

Printed 2/13/2023 9:22:54 AM

General Fund (10)

2400 Support Services – Pupil Health	<u>Elementary</u>	<u>Secondary</u>	<u>Federal</u>	<u>Total</u>
100 <u>Personnel Services – Salaries</u>				
100 Personnel Services – Salaries			1,068.00	132,833.13
Total Personnel Services – Salaries			\$1,068.00	\$132,833.13
200 <u>Personnel Services – Employee Benefits</u>				
210 Group Insurance – Contracted Provider				75,936.78
220 Social Security Contributions			78.48	9,008.85
230 PSERS Retirement Contributions			31.44	46,444.81
250 Unemployment Compensation			1.30	502.88
260 Workers' Compensation			12.84	1,594.00
292 Health Savings Accounts				4,613.61
Total Personnel Services – Employee Benefits			\$124.06	\$138,100.93
300 <u>Purchased Professional and Technical Services</u>				
330 Other Professional Services				16,995.58
Total Purchased Professional and Technical Services				\$16,995.58
500 <u>Other Purchased Services</u>				
580 Travel				57.12
Total Other Purchased Services				\$57.12
600 <u>Supplies</u>				
610 General Supplies				2,588.18
Total Supplies				\$2,588.18
Total 2400 Support Services – Pupil Health			\$1,192.06	\$290,574.94

LEA : 111312503     Huntingdon Area SD

Printed 2/13/2023 9:22:54 AM

General Fund (10)

2440 Nursing Services

	<u>Elementary</u>	<u>Secondary</u>	<u>Federal</u>	<u>Total</u>
<b>100 <u>Personnel Services – Salaries</u></b>				
100 Personnel Services – Salaries			1,068.00	132,833.13
<b>Total Personnel Services – Salaries</b>			<b>\$1,068.00</b>	<b>\$132,833.13</b>
<b>200 <u>Personnel Services – Employee Benefits</u></b>				
210 Group Insurance – Contracted Provider				75,936.78
220 Social Security Contributions			78.48	9,008.85
230 PSERS Retirement Contributions			31.44	46,444.81
250 Unemployment Compensation			1.30	502.88
260 Workers' Compensation			12.84	1,594.00
292 Health Savings Accounts				4,613.61
<b>Total Personnel Services – Employee Benefits</b>			<b>\$124.06</b>	<b>\$138,100.93</b>
<b>300 <u>Purchased Professional and Technical Services</u></b>				
330 Other Professional Services				16,995.58
<b>Total Purchased Professional and Technical Services</b>				<b>\$16,995.58</b>
<b>500 <u>Other Purchased Services</u></b>				
580 Travel				57.12
<b>Total Other Purchased Services</b>				<b>\$57.12</b>
<b>600 <u>Supplies</u></b>				
610 General Supplies				2,588.18
<b>Total Supplies</b>				<b>\$2,588.18</b>
<b>Total 2440 Nursing Services</b>			<b>\$1,192.06</b>	<b>\$290,574.94</b>

LEA : 111312503     Huntingdon Area SD

Printed 2/13/2023 9:22:54 AM

<b>General Fund (10)</b>				
<b>2500 Support Services – Business</b>	<b><u>Elementary</u></b>	<b><u>Secondary</u></b>	<b><u>Federal</u></b>	<b><u>Total</u></b>
<b>100 <u>Personnel Services – Salaries</u></b>				
100 Personnel Services – Salaries				165,731.16
<b>Total Personnel Services – Salaries</b>				<b>\$165,731.16</b>
<b>200 <u>Personnel Services – Employee Benefits</u></b>				
210 Group Insurance – Contracted Provider				55,989.36
220 Social Security Contributions				12,408.84
230 PSERS Retirement Contributions				59,010.87
250 Unemployment Compensation				418.46
260 Workers' Compensation				2,026.73
292 Health Savings Accounts				4,200.00
<b>Total Personnel Services – Employee Benefits</b>				<b>\$134,054.26</b>
<b>300 <u>Purchased Professional and Technical Services</u></b>				
330 Other Professional Services				17,616.46
<b>Total Purchased Professional and Technical Services</b>				<b>\$17,616.46</b>
<b>400 <u>Purchased Property Services</u></b>				
440 Rentals				2,239.22
<b>Total Purchased Property Services</b>				<b>\$2,239.22</b>
<b>500 <u>Other Purchased Services</u></b>				
580 Travel				1,078.08
<b>Total Other Purchased Services</b>				<b>\$1,078.08</b>
<b>600 <u>Supplies</u></b>				
610 General Supplies				22,372.23
650 Supplies & Fees – Technology Related				29,797.14
<b>Total Supplies</b>				<b>\$52,169.37</b>
<b>800 <u>Other Objects</u></b>				
810 Dues and Fees				12,096.38
<b>Total Other Objects</b>				<b>\$12,096.38</b>
<b>Total 2500 Support Services – Business</b>				<b>\$384,984.93</b>

LEA : 111312503     Huntingdon Area SD

Printed 2/13/2023 9:22:54 AM

General Fund (10)

2590 Other Support Services – Business	<u>Elementary</u>	<u>Secondary</u>	<u>Federal</u>	<u>Total</u>
100 <u>Personnel Services – Salaries</u>				
100 Personnel Services – Salaries				165,731.16
Total Personnel Services – Salaries				\$165,731.16
200 <u>Personnel Services – Employee Benefits</u>				
210 Group Insurance – Contracted Provider				55,989.36
220 Social Security Contributions				12,408.84
230 PSERS Retirement Contributions				59,010.87
250 Unemployment Compensation				418.46
260 Workers' Compensation				2,026.73
292 Health Savings Accounts				4,200.00
Total Personnel Services – Employee Benefits				\$134,054.26
300 <u>Purchased Professional and Technical Services</u>				
330 Other Professional Services				17,616.46
Total Purchased Professional and Technical Services				\$17,616.46
400 <u>Purchased Property Services</u>				
440 Rentals				2,239.22
Total Purchased Property Services				\$2,239.22
500 <u>Other Purchased Services</u>				
580 Travel				1,078.08
Total Other Purchased Services				\$1,078.08
600 <u>Supplies</u>				
610 General Supplies				22,372.23
650 Supplies & Fees – Technology Related				29,797.14
Total Supplies				\$52,169.37
800 <u>Other Objects</u>				
810 Dues and Fees				12,096.38
Total Other Objects				\$12,096.38
Total 2590 Other Support Services – Business				\$384,984.93



LEA : 111312503     Huntingdon Area SD

Printed 2/13/2023 9:22:54 AM

General Fund (10)

2600 Operation and Maintenance of Plant Services	<u>Elementary</u>	<u>Secondary</u>	<u>Federal</u>	<u>Total</u>
<b>100 <u>Personnel Services – Salaries</u></b>				
100 Personnel Services – Salaries				788,369.01
<b>Total Personnel Services – Salaries</b>				<b>\$788,369.01</b>
<b>200 <u>Personnel Services – Employee Benefits</u></b>				
210 Group Insurance – Contracted Provider				241,926.54
220 Social Security Contributions				57,804.02
230 PSERS Retirement Contributions				275,098.79
250 Unemployment Compensation				2,326.26
260 Workers' Compensation				9,487.39
292 Health Savings Accounts				19,600.00
<b>Total Personnel Services – Employee Benefits</b>				<b>\$606,243.00</b>
<b>300 <u>Purchased Professional and Technical Services</u></b>				
350 Security / Safety Services				46,002.56
<b>Total Purchased Professional and Technical Services</b>				<b>\$46,002.56</b>
<b>400 <u>Purchased Property Services</u></b>				
410 Cleaning Services				32,102.86
420 Utility Services				84,250.60
430 Repairs and Maintenance Services				132,648.35
440 Rentals				1,912.05
460 Extermination Services				5,066.64
<b>Total Purchased Property Services</b>				<b>\$255,980.50</b>
<b>500 <u>Other Purchased Services</u></b>				
522 Automotive Liability Insurance				2,297.00
523 General Property and Liability Insurance				83,086.00
530 Communications				38,678.14
580 Travel				658.45
<b>Total Other Purchased Services</b>				<b>\$124,719.59</b>
<b>600 <u>Supplies</u></b>				
610 General Supplies	49,002.38	120,179.26	79,467.97	248,649.61
620 Energy				453,553.70
<b>Total Supplies</b>	<b>\$49,002.38</b>	<b>\$120,179.26</b>	<b>\$79,467.97</b>	<b>\$702,203.31</b>
<b>Total 2600 Operation and Maintenance of Plant Services</b>	<b>\$49,002.38</b>	<b>\$120,179.26</b>	<b>\$79,467.97</b>	<b>\$2,523,517.97</b>

LEA : 111312503     Huntingdon Area SD

Printed 2/13/2023 9:22:54 AM

General Fund (10)

2660 Safety and Security Services	<u>Elementary</u>	<u>Secondary</u>	<u>Federal</u>	<u>Total</u>
300 <u>Purchased Professional and Technical Services</u>				
350 Security / Safety Services				46,002.56
Total Purchased Professional and Technical Services				\$46,002.56
Total 2660 Safety and Security Services				\$46,002.56

LEA : 111312503     Huntingdon Area SD

Printed 2/13/2023 9:22:54 AM

General Fund (10)

2690 Other Operation and Maintenance of Plant Services	<u>Elementary</u>	<u>Secondary</u>	<u>Federal</u>	<u>Total</u>
<b>100 <u>Personnel Services – Salaries</u></b>				
100 Personnel Services – Salaries				788,369.01
<b>Total Personnel Services – Salaries</b>				<b>\$788,369.01</b>
<b>200 <u>Personnel Services – Employee Benefits</u></b>				
210 Group Insurance – Contracted Provider				241,926.54
220 Social Security Contributions				57,804.02
230 PSERS Retirement Contributions				275,098.79
250 Unemployment Compensation				2,326.26
260 Workers' Compensation				9,487.39
292 Health Savings Accounts				19,600.00
<b>Total Personnel Services – Employee Benefits</b>				<b>\$606,243.00</b>
<b>400 <u>Purchased Property Services</u></b>				
410 Cleaning Services				32,102.86
420 Utility Services				84,250.60
430 Repairs and Maintenance Services				132,648.35
440 Rentals				1,912.05
460 Extermination Services				5,066.64
<b>Total Purchased Property Services</b>				<b>\$255,980.50</b>
<b>500 <u>Other Purchased Services</u></b>				
522 Automotive Liability Insurance				2,297.00
523 General Property and Liability Insurance				83,086.00
530 Communications				38,678.14
580 Travel				658.45
<b>Total Other Purchased Services</b>				<b>\$124,719.59</b>
<b>600 <u>Supplies</u></b>				
610 General Supplies	49,002.38	120,179.26	79,467.97	248,649.61
620 Energy				453,553.70
<b>Total Supplies</b>	<b>\$49,002.38</b>	<b>\$120,179.26</b>	<b>\$79,467.97</b>	<b>\$702,203.31</b>
<b>Total 2690 Other Operation and Maintenance of Plant Services</b>	<b>\$49,002.38</b>	<b>\$120,179.26</b>	<b>\$79,467.97</b>	<b>\$2,477,515.41</b>

LEA : 111312503     Huntingdon Area SD

Printed 2/13/2023 9:22:54 AM

General Fund (10)				
2700 Student Transportation Services	<u>Elementary</u>	<u>Secondary</u>	<u>Federal</u>	<u>Total</u>
400 <u>Purchased Property Services</u>				
440 Rentals				11,042.25
Total Purchased Property Services				\$11,042.25
500 <u>Other Purchased Services</u>				
513 Contracted Carriers			32,629.71	2,187,882.22
516 Student Transportation Services From the IU				49,643.81
Total Other Purchased Services			\$32,629.71	\$2,237,526.03
600 <u>Supplies</u>				
650 Supplies & Fees – Technology Related				6,034.10
Total Supplies				\$6,034.10
Total 2700 Student Transportation Services			\$32,629.71	\$2,254,602.38

LEA : 111312503     Huntingdon Area SD

Printed 2/13/2023 9:22:54 AM

General Fund (10)				
2750 Nonpublic Transportation	<u>Elementary</u>	<u>Secondary</u>	<u>Federal</u>	<u>Total</u>
500 <u>Other Purchased Services</u>				
513 Contracted Carriers				82,390.00
Total Other Purchased Services				\$82,390.00
Total 2750 Nonpublic Transportation				\$82,390.00

LEA : 111312503     Huntingdon Area SD

Printed 2/13/2023 9:22:54 AM

General Fund (10)				
2790 Other Student Transportation Services	<u>Elementary</u>	<u>Secondary</u>	<u>Federal</u>	<u>Total</u>
400 <u>Purchased Property Services</u>				
440 Rentals				11,042.25
Total Purchased Property Services				\$11,042.25
500 <u>Other Purchased Services</u>				
513 Contracted Carriers			32,629.71	2,105,492.22
516 Student Transportation Services From the IU				49,643.81
Total Other Purchased Services			\$32,629.71	\$2,155,136.03
600 <u>Supplies</u>				
650 Supplies & Fees – Technology Related				6,034.10
Total Supplies				\$6,034.10
Total 2790 Other Student Transportation Services			\$32,629.71	\$2,172,212.38

LEA : 111312503     Huntingdon Area SD

Printed 2/13/2023 9:22:54 AM

General Fund (10)				
2800 Support Services – Central	<u>Elementary</u>	<u>Secondary</u>	<u>Federal</u>	<u>Total</u>
200 <u>Personnel Services – Employee Benefits</u>				
240 Tuition Reimbursement				15,752.68
Total Personnel Services – Employee Benefits				\$15,752.68
500 <u>Other Purchased Services</u>				
580 Travel			910.00	910.00
Total Other Purchased Services			\$910.00	\$910.00
800 <u>Other Objects</u>				
890 Miscellaneous Expenditures				600.00
Total Other Objects				\$600.00
Total 2800 Support Services – Central			\$910.00	\$17,262.68

LEA : 111312503     Huntingdon Area SD

Printed 2/13/2023 9:22:54 AM

General Fund (10)

2830 Staff Services

Elementary                      Secondary                      Federal                      Total

200 <u>Personnel Services – Employee Benefits</u>				
240 Tuition Reimbursement				15,752.68
Total Personnel Services – Employee Benefits				\$15,752.68
800 <u>Other Objects</u>				
890 Miscellaneous Expenditures				600.00
Total Other Objects				\$600.00
Total 2830 Staff Services				\$16,352.68



LEA : 111312503     Huntingdon Area SD

Printed 2/13/2023 9:22:54 AM

General Fund (10)				
2832 Recruitment and Placement Services	<u>Elementary</u>	<u>Secondary</u>	<u>Federal</u>	<u>Total</u>
800 <u>Other Objects</u>				
890 Miscellaneous Expenditures				600.00
Total Other Objects				\$600.00
Total 2832 Recruitment and Placement Services				\$600.00

LEA : 111312503     Huntingdon Area SD

Printed 2/13/2023 9:22:54 AM

General Fund (10)

2834 Staff Development Services – Non-Instructional, Certified Staff Only	<u>Elementary</u>	<u>Secondary</u>	<u>Federal</u>	<u>Total</u>
200 <u>Personnel Services – Employee Benefits</u>				
240 Tuition Reimbursement				15,752.68
Total Personnel Services – Employee Benefits				\$15,752.68
Total 2834 Staff Development Services – Non-Instructional, Certified Staff Only				\$15,752.68

LEA : 111312503     Huntingdon Area SD

Printed 2/13/2023 9:22:54 AM

General Fund (10)

2850 State and Federal Agency Liaison Services	<u>Elementary</u>	<u>Secondary</u>	<u>Federal</u>	<u>Total</u>
500 <u>Other Purchased Services</u>				
580 Travel			910.00	910.00
Total Other Purchased Services			\$910.00	\$910.00
Total 2850 State and Federal Agency Liaison Services			\$910.00	\$910.00

LEA : 111312503     Huntingdon Area SD

Printed 2/13/2023 9:22:57 AM

<b>General Fund (10)</b>	
<b>3000 Operation of Non-Instructional Services</b>	<b><u>Total</u></b>
<b>100 <u>Personnel Services – Salaries</u></b>	
100 Personnel Services – Salaries	246,946.17
<b>Total Personnel Services – Salaries</b>	<b>\$246,946.17</b>
<b>200 <u>Personnel Services – Employee Benefits</u></b>	
220 Social Security Contributions	3,806.25
230 PSERS Retirement Contributions	16,917.68
250 Unemployment Compensation	83,899.43
260 Workers' Compensation	606.52
<b>Total Personnel Services – Employee Benefits</b>	<b>\$105,229.88</b>
<b>300 <u>Purchased Professional and Technical Services</u></b>	
330 Other Professional Services	59,930.90
<b>Total Purchased Professional and Technical Services</b>	<b>\$59,930.90</b>
<b>400 <u>Purchased Property Services</u></b>	
430 Repairs and Maintenance Services	24,435.08
<b>Total Purchased Property Services</b>	<b>\$24,435.08</b>
<b>500 <u>Other Purchased Services</u></b>	
510 Student Transportation Services	65,357.56
<b>Total Other Purchased Services</b>	<b>\$65,357.56</b>
<b>600 <u>Supplies</u></b>	
610 General Supplies	1,428.09
<b>Total Supplies</b>	<b>\$1,428.09</b>
<b>Total 3000 Operation of Non-Instructional Services</b>	<b>\$503,327.68</b>

LEA : 111312503     Huntingdon Area SD

Printed 2/13/2023 9:22:57 AM

<b>General Fund (10)</b>				
<b>3200 Student Activities</b>	<b><u>Elementary</u></b>	<b><u>Secondary</u></b>	<b><u>Federal</u></b>	<b><u>Total</u></b>
100 <b><u>Personnel Services – Salaries</u></b>				
100 Personnel Services – Salaries				246,946.17
<b>Total Personnel Services – Salaries</b>				<b>\$246,946.17</b>
200 <b><u>Personnel Services – Employee Benefits</u></b>				
220 Social Security Contributions				3,806.25
230 PSERS Retirement Contributions				16,917.68
250 Unemployment Compensation				83,899.43
260 Workers' Compensation				606.52
<b>Total Personnel Services – Employee Benefits</b>				<b>\$105,229.88</b>
300 <b><u>Purchased Professional and Technical Services</u></b>				
330 Other Professional Services				59,930.90
<b>Total Purchased Professional and Technical Services</b>				<b>\$59,930.90</b>
400 <b><u>Purchased Property Services</u></b>				
430 Repairs and Maintenance Services				24,435.08
<b>Total Purchased Property Services</b>				<b>\$24,435.08</b>
500 <b><u>Other Purchased Services</u></b>				
510 Student Transportation Services				65,357.56
<b>Total Other Purchased Services</b>				<b>\$65,357.56</b>
600 <b><u>Supplies</u></b>				
610 General Supplies				1,428.09
<b>Total Supplies</b>				<b>\$1,428.09</b>
<b>Total 3200 Student Activities</b>				<b>\$503,327.68</b>

LEA : 111312503     Huntingdon Area SD

Printed 2/13/2023 9:23:04 AM

General Fund (10)	
5000 Other Expenditures and Financing Uses	<u>Total</u>
800 <u>Other Objects</u>	
830 Interest	932,058.33
Total Other Objects	\$932,058.33
900 <u>Other Uses of Funds</u>	
910 Redemption of Principal	11,240,891.88
Total Other Uses of Funds	\$11,240,891.88
Total 5000 Other Expenditures and Financing Uses	\$12,172,950.21

LEA : 111312503     Huntingdon Area SD

Printed 2/13/2023 9:23:04 AM

General Fund (10)

5100 Debt Service / Other Expenditures and Financing Uses	<u>Elementary</u>	<u>Secondary</u>	<u>Federal</u>	<u>Total</u>
800 <u>Other Objects</u>				
830 Interest				932,058.33
Total Other Objects				\$932,058.33
900 <u>Other Uses of Funds</u>				
910 Redemption of Principal				11,240,891.88
Total Other Uses of Funds				\$11,240,891.88
Total 5100 Debt Service / Other Expenditures and Financing Uses				\$12,172,950.21

LEA : 111312503     Huntingdon Area SD

Printed 2/13/2023 9:23:04 AM

General Fund (10)				
5110 Debt Service	<u>Elementary</u>	<u>Secondary</u>	<u>Federal</u>	<u>Total</u>
800 <u>Other Objects</u>				
830 Interest				920,781.16
Total Other Objects				\$920,781.16
900 <u>Other Uses of Funds</u>				
910 Redemption of Principal				1,399,830.03
Total Other Uses of Funds				\$1,399,830.03
Total 5110 Debt Service				\$2,320,611.19



LEA : 111312503     Huntingdon Area SD

Printed 2/13/2023 9:23:04 AM

General Fund (10)

5120 Debt Service – Refunded Bonds	<u>Elementary</u>	<u>Secondary</u>	<u>Federal</u>	<u>Total</u>
900 <u>Other Uses of Funds</u>				
910 Redemption of Principal				9,792,320.00
Total Other Uses of Funds				\$9,792,320.00
Total 5120 Debt Service – Refunded Bonds				\$9,792,320.00

LEA : 111312503     Huntingdon Area SD

Printed 2/13/2023 9:23:04 AM

General Fund (10)

5140 Leases	<u>Elementary</u>	<u>Secondary</u>	<u>Federal</u>	<u>Total</u>
800 <u>Other Objects</u>				
830 Interest				11,277.17
Total Other Objects				\$11,277.17
900 <u>Other Uses of Funds</u>				
910 Redemption of Principal				48,741.85
Total Other Uses of Funds				\$48,741.85
Total 5140 Leases				\$60,019.02

LEA : 111312503     Huntingdon Area SD

Printed 2/13/2023 9:23:02 AM

Athletic / School-Sponsored Extra Curricular Activities Fund (29)

3000 Operation of Non-Instructional Services		<u>Total</u>
<b>200 <u>Personnel Services – Employee Benefits</u></b>		
220 Social Security Contributions		14,874.95
230 PSERS Retirement Contributions		65,309.29
250 Unemployment Compensation		(82,544.62)
260 Workers' Compensation		2,360.38
<b>Total Personnel Services – Employee Benefits</b>		
<b>300 <u>Purchased Professional and Technical Services</u></b>		
330 Other Professional Services		(29,470.90)
350 Security / Safety Services		2,870.90
390 Other Purchased Professional and Technical Services		26,600.00
<b>Total Purchased Professional and Technical Services</b>		
<b>400 <u>Purchased Property Services</u></b>		
430 Repairs and Maintenance Services		(12,812.50)
440 Rentals		12,812.50
<b>Total Purchased Property Services</b>		
<b>500 <u>Other Purchased Services</u></b>		
510 Student Transportation Services		(8,158.50)
580 Travel		8,158.50
<b>Total Other Purchased Services</b>		
<b>600 <u>Supplies</u></b>		
610 General Supplies		63,232.50
<b>Total Supplies</b>		<b>\$63,232.50</b>
<b>800 <u>Other Objects</u></b>		
810 Dues and Fees		2,647.00
<b>Total Other Objects</b>		<b>\$2,647.00</b>
<b>Total 3000 Operation of Non-Instructional Services</b>		<b>\$65,879.50</b>

LEA : 111312503     Huntingdon Area SD

Printed 2/13/2023 9:23:02 AM

Athletic / School-Sponsored Extra Curricular Activities Fund (29)

3200 Student Activities	<u>Elementary</u>	<u>Secondary</u>	<u>Federal</u>	<u>Total</u>
<b>200 <u>Personnel Services – Employee Benefits</u></b>				
220 Social Security Contributions				14,874.95
230 PSERS Retirement Contributions				65,309.29
250 Unemployment Compensation				(82,544.62)
260 Workers' Compensation				2,360.38
<b>Total Personnel Services – Employee Benefits</b>				
<b>300 <u>Purchased Professional and Technical Services</u></b>				
330 Other Professional Services				(29,470.90)
350 Security / Safety Services				2,870.90
390 Other Purchased Professional and Technical Services				26,600.00
<b>Total Purchased Professional and Technical Services</b>				
<b>400 <u>Purchased Property Services</u></b>				
430 Repairs and Maintenance Services				(12,812.50)
440 Rentals				12,812.50
<b>Total Purchased Property Services</b>				
<b>500 <u>Other Purchased Services</u></b>				
510 Student Transportation Services				(8,158.50)
580 Travel				8,158.50
<b>Total Other Purchased Services</b>				
<b>600 <u>Supplies</u></b>				
610 General Supplies				63,232.50
<b>Total Supplies</b>				<b>\$63,232.50</b>
<b>800 <u>Other Objects</u></b>				
810 Dues and Fees				2,647.00
<b>Total Other Objects</b>				<b>\$2,647.00</b>
<b>Total 3200 Student Activities</b>				<b>\$65,879.50</b>

LEA : 111312503     Huntingdon Area SD

Printed 2/13/2023 9:23:09 AM

	<u>General Fund(10)</u>	<u>Student Sponsored Activity Fund(21)</u>	<u>Public Purpose Trust(27)</u>	<u>Other Compt Approved (28)</u>	<u>Athletic / Activity(29)</u>
<b>1000 <u>Instruction</u></b>					
1100 Regular Programs - Elementary / Secondary	12,196,064.45				
1200 Special Programs - Elementary / Secondary	6,331,727.72				
1300 Vocational Education	1,009,778.23				
1400 Other Instructional Programs - Elementary / Secondary	358,538.73				
1800 Pre-Kindergarten	189,126.33				
<b>Total Instruction</b>	<b>\$20,085,235.46</b>				
<b>2000 <u>Support Services</u></b>					
2100 Support Services - Students	809,064.10				
2200 Support Services - Instructional Staff	2,459,746.04				
2300 Support Services - Administration	2,111,306.70				
2400 Support Services - Pupil Health	290,574.94				
2500 Support Services - Business	384,984.93				
2600 Operation and Maintenance of Plant Services	2,523,517.97				
2700 Student Transportation Services	2,254,602.38				
2800 Support Services - Central	17,262.68				
<b>Total Support Services</b>	<b>\$10,851,059.74</b>				
<b>3000 <u>Operation of Non-Instructional Services</u></b>					
3200 Student Activities	503,327.68				65,879.50
<b>Total Operation of Non-Instructional Services</b>	<b>\$503,327.68</b>				<b>\$65,879.50</b>
<b>5000 <u>Other Expenditures and Financing Uses</u></b>					
5100 Debt Service / Other Expenditures and Financing Uses	12,172,950.21				
<b>Total Other Expenditures and Financing Uses</b>	<b>\$12,172,950.21</b>				
<b>TOTAL ACTUAL EXPENDITURES &amp; OTHER FINANCING USES</b>	<b>\$43,612,573.09</b>				<b>\$65,879.50</b>

LEA : 111312503     Huntingdon Area SD

Printed 2/13/2023 9:23:09 AM

	<u>Capital Reserve (690.</u>	<u>Capital Reserve (1431)(32)</u>	<u>Other Capital Projects</u>	<u>Debt Service(40)</u>	<u>Permanent(90)</u>
	<u>1850)(31)</u>		<u>Fund(39)</u>		
<b>1000 <u>Instruction</u></b>					
1100 Regular Programs - Elementary / Secondary					
1200 Special Programs - Elementary / Secondary					
1300 Vocational Education					
1400 Other Instructional Programs - Elementary / Secondary					
1800 Pre-Kindergarten					
<b>Total Instruction</b>					
<b>2000 <u>Support Services</u></b>					
2100 Support Services - Students					
2200 Support Services - Instructional Staff					
2300 Support Services - Administration					
2400 Support Services - Pupil Health					
2500 Support Services - Business					
2600 Operation and Maintenance of Plant Services					
2700 Student Transportation Services					
2800 Support Services - Central					
<b>Total Support Services</b>					
<b>3000 <u>Operation of Non-Instructional Services</u></b>					
3200 Student Activities					
<b>Total Operation of Non-Instructional Services</b>					
<b>5000 <u>Other Expenditures and Financing Uses</u></b>					
5100 Debt Service / Other Expenditures and Financing Uses					
<b>Total Other Expenditures and Financing Uses</b>					
<b>TOTAL ACTUAL EXPENDITURES &amp; OTHER FINANCING USES</b>					

LEA : 111312503     Huntingdon Area SD

Printed 2/13/2023 9:23:09 AM

	<u>Total</u>
<b>1000 <u>Instruction</u></b>	
1100 Regular Programs - Elementary / Secondary	12,196,064.45
1200 Special Programs - Elementary / Secondary	6,331,727.72
1300 Vocational Education	1,009,778.23
1400 Other Instructional Programs - Elementary / Secondary	358,538.73
1800 Pre-Kindergarten	189,126.33
<b>Total Instruction</b>	<b>\$20,085,235.46</b>
<b>2000 <u>Support Services</u></b>	
2100 Support Services - Students	809,064.10
2200 Support Services - Instructional Staff	2,459,746.04
2300 Support Services - Administration	2,111,306.70
2400 Support Services - Pupil Health	290,574.94
2500 Support Services - Business	384,984.93
2600 Operation and Maintenance of Plant Services	2,523,517.97
2700 Student Transportation Services	2,254,602.38
2800 Support Services - Central	17,262.68
<b>Total Support Services</b>	<b>\$10,851,059.74</b>
<b>3000 <u>Operation of Non-Instructional Services</u></b>	
3200 Student Activities	569,207.18
<b>Total Operation of Non-Instructional Services</b>	<b>\$569,207.18</b>
<b>5000 <u>Other Expenditures and Financing Uses</u></b>	
5100 Debt Service / Other Expenditures and Financing Uses	12,172,950.21
<b>Total Other Expenditures and Financing Uses</b>	<b>\$12,172,950.21</b>
<b>TOTAL ACTUAL EXPENDITURES &amp; OTHER FINANCING USES</b>	<b>\$43,678,452.59</b>

LEA : 111312503     Huntingdon Area SD

Printed 2/13/2023 9:23:17 AM

PSERS Salary Data (Salary Data should relate to the General Fund only)

Amount	Description	Amount
	Total Salary Base for salaries subject to PSERS withholding	11,608,194.67
	Total Federally Funded salaries subject to PSERS withholding	702,971.75

Title I Expenditure Data

Amount	Description	Amount
	Expenditures Funded with Current Title I Funds	601,423.00
	Expenditures Funded with Carry over Title I Funds	
Total	Title I Expenditure Data	\$601,423.00

Title IV Revenue Data

Amount	Description	Amount
	Revenue from Title IV-A-1: Student Support and Academic Enrichment Grants	45,703.00
	Revenue from Title IV-B: 21st Century Community Learning Centers	

Title V Revenue Data

Amount	Description	Amount
	Revenue from Title V-B-2: Rural and Low-Income School Programs	
	Revenue from Title V-B-1: Small Rural School Achievement (Directly from the Federal Govt)	



1 . <u>Current Special Education Expenditures within &lt;b&gt;Function 1000.&lt;/b&gt;\r\nSee list of exclusions in the note below.</u>	4,362,056.81
2 . <u>Current Special Education Expenditures within &lt;b&gt;Function 2000.&lt;/b&gt;\r\nSee list of exclusions in the note below.</u>	10,686,417.52
3 . <u>Current Special Education Expenditures within &lt;b&gt;Sub-Function 2100.&lt;/b&gt;\r\nThis data should also be included in line 2 above.\r\nSee list of exclusions in the note below.</u>	723,527.39
4 . <u>Current Special Education Expenditures within &lt;b&gt;Sub-Function 2200.&lt;/b&gt;\r\nThis data should also be included in line 2 above.\r\nSee list of exclusions in the note below.</u>	2,461,271.81
5 . <u>Current Special Education Expenditures within &lt;b&gt;Sub-Function 2700.&lt;/b&gt;\r\nThis data should also be included in line 2 above.\r\nSee list of exclusions in the note below.</u>	2,254,602.38
6 . <u>Current Special Education Expenditures within &lt;b&gt;Sub-Function 3100.&lt;/b&gt;\r\nSee list of exclusions in the note below.</u>	
7 . <u>Current Special Education Expenditures within &lt;b&gt;Sub-Function 3200.&lt;/b&gt;\r\nSee list of exclusions in the note below.</u>	503,327.68

Note: The Current Special Education Expenditure amounts for each line should be calculated as follows:

- \* Include the total expenditures for special education costs from all funds for the function/sub-function requested
- \* Exclude data from sub-functions: 1243,1450,1500,1600,1807,2280,2450,2750,2990
- \* Exclude data from objects: 322,511,512,516,561,562,564,566,592,593,594,595,596,597,700,830,899

Benefits for Staff Relative to Collective Bargaining Agreements

	OBJECT	COVERED	NOT COVERED	TOTAL
10 General Fund	No Self Insurance data to report			
	211 Medical Insurance	2,912,336.03	198,907.16	3,111,243.19
	212 Dental Insurance	63,203.86	5,555.52	68,759.38
	215 Eye Care Insurance		1,580.04	1,580.04
	216 Prescription Insurance			
	271 Self-Insurance Medical Benefits			
	272 Self-Insurance Dental Benefits			
	275 Self-Insurance Eye Care Benefits			
	276 Self-Insurance Prescription Benefits			
	FUND TOTAL	\$2,975,539.89	\$206,042.72	\$3,181,582.61
50 Enterprise Fund	No Self Insurance data to report			
	211 Medical Insurance	152,689.64		152,689.64
	212 Dental Insurance	2,551.16		2,551.16
	215 Eye Care Insurance			
	216 Prescription Insurance			
	271 Self-Insurance Medical Benefits			
	272 Self-Insurance Dental Benefits			
	275 Self-Insurance Eye Care Benefits			
	276 Self-Insurance Prescription Benefits			
	FUND TOTAL	\$155,240.80		\$155,240.80
60 Internal Service Fund	No Self Insurance data to report			
	211 Medical Insurance			
	212 Dental Insurance			
	215 Eye Care Insurance			
	216 Prescription Insurance			
	271 Self-Insurance Medical Benefits			
	272 Self-Insurance Dental Benefits			
	275 Self-Insurance Eye Care Benefits			
	276 Self-Insurance Prescription Benefits			
	FUND TOTAL			
Total of All Funds		\$3,130,780.69	\$206,042.72	\$3,336,823.41

LEA : 111312503     Huntingdon Area SD

Printed 2/13/2023 9:23:22 AM

Function	Special Education (Prior Year)	Nonspecial Education (Prior Year)	Total (Prior Year)	Special Education (Current Year)	Nonspecial Education (Current Year)	Total (Current Year)
2120 Guidance Services	115,805.94	416,723.67	532,529.61	117,014.18	421,071.49	538,085.67
2140 Psychological Services	50,605.36	178,543.16	229,148.52	25,500.18	91,761.53	117,261.71
2150 Speech Pathology and Audiology Services						
2160 Social Work Services	23,214.01	83,534.83	106,748.84	18,601.14	66,935.57	85,536.71
2260 Instruction and Curriculum Development Services	95,181.57	342,507.61	437,689.18	95,648.31	344,187.13	439,835.44
2350 Legal and Accounting Services	14,605.10	47,835.29	62,440.39	14,605.71	73,509.29	88,115.00
2420 Medical Services						
2440 Nursing Services	66,289.06	238,538.89	304,827.95	63,189.54	227,385.40	290,574.94
2700 Student Transportation Services	663,763.68	1,550,892.96	2,214,656.64	672,450.44	1,582,151.94	2,254,602.38
Total	\$1,029,464.72	\$2,858,576.41	\$3,888,041.13	\$1,007,009.50	\$2,807,002.35	\$3,814,011.85

LEA : 111312503     Huntingdon Area SD

Printed 2/13/2023 9:23:24 AM

(PRINCIPAL AMOUNTS ONLY)

**GOVERNMENTAL FUNDS/ ACTIVITIES**

	Short-Term Borrowing	General Obligation Bonds/Notes	Authority Building Obligations	OLTD, Ext Term Fin, Leases	Other Post- Employment Benefits (OPEB)	Compensated Absences	Net Pension Liability	Total
1. Debt at Beginning of Fiscal Year		34,355,000.00			5,201,931.00	746,669.13	32,528,717.75	72,832,317.88
2. Additional Debt Incurred During Year		9,890,000.00						9,890,000.00
3. Retirements and Repayments		11,055,000.00			152,339.00	254.00	1,024,020.50	12,231,613.50
4. Debt at End of Fiscal Year		33,190,000.00			5,049,592.00	746,415.13	31,504,697.25	70,490,704.38
5. Accreted Interest at End Of Fiscal Year								
6. Total Debt and Accreted Interest		33,190,000.00			5,049,592.00	746,415.13	31,504,697.25	70,490,704.38
7. Current Portion P&I - Due within 1 year		2,363,081.00						2,363,081.00
8. Interest Paid during current fiscal year		920,001.16						920,001.16

(PRINCIPAL AMOUNTS ONLY)

**PROPRIETARY FUNDS**

	Short-Term Borrowing	General Obligation Bonds/Notes	Authority Building Obligations	OLTD, Ext Term Fin, Leases	Other Post- Employment Benefits (OPEB)	Compensated Absences	Net Pension Liability	Total
1. Debt at Beginning of Fiscal Year							918,507.00	918,507.00
2. Additional Debt Incurred During Year								
3. Retirements and Repayments								
4. Debt at End of Fiscal Year							918,507.00	918,507.00
5. Accreted Interest at End Of Fiscal Year								
6. Total Debt and Accreted Interest							918,507.00	918,507.00
7. Current Portion P&I - Due within 1 year								
8. Interest Paid during current fiscal year								

LEA : 111312503     Huntingdon Area SD

Total Principal and Interest Payments Made by Your School - All Funds

Function	Fund		Principal (910)	Principal (920)	Interest (830)	Total (Principal +Interest)	Misc Other Uses (990)
5110	10	General Fund	1,399,830.03		920,781.16	2,320,611.19	
5110	20	Special Revenue Funds					
5110	30	Capital Projects Funds					
5110	40	Debt Service Fund					
5110	90	Permanent Fund					
5120	10	General Fund	9,792,320.00			9,792,320.00	
5120	20	Special Revenue Funds					
5120	30	Capital Projects Funds					
5120	40	Debt Service Fund					
5140	10	General Fund	48,741.85		11,277.17	60,019.02	
5140	20	Special Revenue Funds					
5140	30	Capital Projects Funds					
5140	40	Debt Service Fund					
5140	90	Permanent Fund					
Total Debt Payments - Governmental Funds			\$11,240,891.88		\$932,058.33	\$12,172,950.21	

Function	Fund		Principal (910)	Principal (920)	Interest (830)	Total (Principal +Interest)
5110	50	Enterprise Fund				
5110	60	Internal Service Fund				
5120	50	Enterprise Fund				
5120	60	Internal Service Fund				
5140	50	Enterprise Fund				
5140	60	Internal Service Fund				

Total Debt Payments - Proprietary Funds		
---	--	--

LEA : 111312503     Huntingdon Area SD

Printed 2/13/2023 9:23:24 AM

**Debt Details**  
**Governmental Funds/ Activities**

Debt Category	Debt Issue Date (MM/YYYY)	Principal Amounts Only				Current Portion Due Within One Year (Principal and Interest)	Interest Paid During Fiscal Year
		Debt at Beginning of Fiscal Year	Additions	Reductions / Repayments	Debt at End of Fiscal Year		
General Obligation Bonds/Notes – CIB	12/2021		9,890,000.00		9,890,000.00	204,025.00	31,774.90
General Obligation Bonds/Notes – CIB	11/2019	5,195,000.00		1,320,000.00	3,875,000.00	1,553,875.00	226,750.00
General Obligation Bonds/Notes – CIB	10/2016	9,655,000.00		9,655,000.00			137,320.00
General Obligation Bonds/Notes – CIB	6/2020	9,970,000.00		70,000.00	9,900,000.00	314,506.00	238,256.26
General Obligation Bonds/Notes – CIB	3/2020	9,535,000.00		10,000.00	9,525,000.00	290,675.00	285,900.00
Compensated Absences		746,669.13		254.00	746,415.13		
Other Post-Employment Benefits (OPEB)		5,201,931.00		152,339.00	5,049,592.00		
Net Pension Liability		32,528,717.75		1,024,020.50	31,504,697.25		
Totals for Debt Entered:		\$72,832,317.88	\$9,890,000.00	\$12,231,613.50	\$70,490,704.38	\$2,363,081.00	\$920,001.16

**Bond Details**  
**Proprietary Funds**

Debt Category	Debt Issue Date (MM/YYYY)	Principal Amounts Only				Current Portion Due Within One Year (Principal and Interest)	Interest Paid During Fiscal Year
		Debt at Beginning of Fiscal Year	Additions	Reductions / Repayments	Debt at End of Fiscal Year		
Net Pension Liability		918,507.00			918,507.00		
Totals for Debt Entered:		\$918,507.00			\$918,507.00		

LEA : 111312503     Huntingdon Area SD

**General Fund (10)**

Section 1: Tuition/Purchased Services as Reported within Expenditure Detail	Amount
Tuition Reported in General Fund Expenditures 1000-560	4,172,880.22
Purchased Services in General Fund Expenditures 1000-594 and 1000-597	
<b>Section 1 Total</b>	<b>\$4,172,880.22</b>

Section 2: Tuition Paid to Institution Types During Fiscal Year	Tuition Paid For Nonspecial Education	Tuition Paid For Special Education	Total
1 1306 Institutions			
2 Institutionalized Children's Programs			
3 Juveniles Incarcerated in Adult Facilities			
4 Residential Treatment Facilities			
5 Other Local Education Agencies	20,417.50	19,257.32	39,674.82
6 Brick and Mortar Charter Schools	1,173,425.73	1,357,618.04	2,531,043.77
7 Cyber Charter Schools	819,148.27	67,575.52	886,723.79
8 Career and Technology Centers	610,587.96		610,587.96
9 Approved Private Schools		73,603.88	73,603.88
10 PA Chartered Schools for the Deaf and Blind			
11 Private Residential Rehabilitative Institutions	31,246.00		31,246.00
12 Juvenile Detention Centers			
13 Special Program Jointures			
14 Other Tuition Not Included Elsewhere In This Section			
<b>Section 2 Total</b>	<b>\$2,654,825.46</b>	<b>\$1,518,054.76</b>	<b>\$4,172,880.22</b>

LEA : 111312503     Huntingdon Area SD

Printed 2/13/2023 9:23:29 AM

Food Service / Cafeteria Operations Fund (51)

3000 Operation of Non-Instructional Services

Total

100	<u>Personnel Services – Salaries</u>	
100	Personnel Services – Salaries	332,472.00
Total Personnel Services – Salaries		\$332,472.00
200	<u>Personnel Services – Employee Benefits</u>	
210	Group Insurance – Contracted Provider	153,616.26
220	Social Security Contributions	24,707.33
230	PSERS Retirement Contributions	105,774.72
250	Unemployment Compensation	2,205.83
260	Workers' Compensation	3,740.86
270	Group Insurance – Self-Insurance	15,260.00
Total Personnel Services – Employee Benefits		\$305,305.00
500	<u>Other Purchased Services</u>	
570	Food Service Management	600,457.00
Total Other Purchased Services		\$600,457.00
600	<u>Supplies</u>	
610	General Supplies	52,547.00
Total Supplies		\$52,547.00
700	<u>Property</u>	
740	Depreciation	665.00
Total Property		\$665.00
Total 3000 Operation of Non-Instructional Services		\$1,291,446.00



LEA : 111312503     Huntingdon Area SD

Printed 2/13/2023 9:23:29 AM

Food Service / Cafeteria Operations Fund (51)

3100 Food Services	<u>Elementary</u>	<u>Secondary</u>	<u>Federal</u>	<u>Total</u>
100 <u>Personnel Services – Salaries</u>				
100 Personnel Services – Salaries				332,472.00
Total Personnel Services – Salaries				\$332,472.00
200 <u>Personnel Services – Employee Benefits</u>				
210 Group Insurance – Contracted Provider				153,616.26
220 Social Security Contributions				24,707.33
230 PSERS Retirement Contributions				105,774.72
250 Unemployment Compensation				2,205.83
260 Workers' Compensation				3,740.86
270 Group Insurance – Self-Insurance				15,260.00
Total Personnel Services – Employee Benefits				\$305,305.00
500 <u>Other Purchased Services</u>				
570 Food Service Management				600,457.00
Total Other Purchased Services				\$600,457.00
600 <u>Supplies</u>				
610 General Supplies				52,547.00
Total Supplies				\$52,547.00
700 <u>Property</u>				
740 Depreciation				665.00
Total Property				\$665.00
Total 3100 Food Services				\$1,291,446.00

	<u>Food Service(51)</u>	<u>Child Care Operations(52)</u>	<u>Other Enterprise(58)</u>	<u>Internal Service(60)</u>	<u>Total</u>
<b>3000 <u>Operation of Non-Instructional Services</u></b>					
3100 Food Services	1,291,446.00				1,291,446.00
<b>Total Operation of Non-Instructional Services</b>	<b>\$1,291,446.00</b>				<b>\$1,291,446.00</b>
<b>TOTAL ACTUAL EXPENDITURES &amp; OTHER FINANCING USES</b>	<b>\$1,291,446.00</b>				<b>\$1,291,446.00</b>

LEA : 111312503     Huntingdon Area SD

Printed 2/13/2023 9:23:37 AM

Fund	School	School Number	Local Personnel	Local Nonpersonnel	State Personnel	State Nonpersonnel	Federal Personnel	Federal Nonpersonnel	Total	Explanation
10										
	Huntingdon Area MS	5333	1,722,141.52	1,480,968.84	1,634,205.24	1,405,347.35	744,380.11	544,693.63	7,531,736.69	
	Huntingdon Area SHS	2305	2,293,452.94	1,979,311.43	2,176,344.26	1,878,243.50	977,924.63	714,300.74	10,019,577.50	
	Southside El Sch	7525	1,437,248.39	616,385.25	1,363,859.36	584,911.29	1,303,012.05	248,034.18	5,553,450.52	
	Standing Stone El Sch	7620	1,724,720.67	788,518.28	1,636,652.68	748,254.83	1,850,485.48	326,675.16	7,075,307.10	
Total			7,177,563.52	4,865,183.80	6,811,061.54	4,616,756.97	4,875,802.27	1,833,703.71	30,180,071.81	

	<u>Nonspecial Education</u>	<u>Special Education</u>
<b>1000 Instruction</b>		
1100 Regular Programs - Elementary / Secondary	1,278.00	
<b>Total Instruction</b>	<b>\$1,278.00</b>	
<b>TOTAL ACTUAL EXPENDITURES &amp; OTHER FINANCING USES</b>	<b>\$1,278.00</b>	

LEA : 111312503     Huntingdon Area SD

Printed 2/13/2023 9:23:41 AM

1000 Instruction

100 <u>Personnel Services - Salaries</u>	
100 Personnel Services - Salaries	891.00
<b>Total Personnel Services - Salaries</b>	<b>\$891.00</b>
200 <u>Personnel Services - Employee Benefits</u>	
220 Social Security Contributions	66.00
230 PSERS Retirement Contributions	311.00
260 Workers' Compensation	10.00
<b>Total Personnel Services - Employee Benefits</b>	<b>\$387.00</b>
<b>Total 1000 Instruction</b>	<b>\$1,278.00</b>

LEA : 111312503     Huntingdon Area SD

Printed 2/13/2023 9:23:41 AM

1100 Regular Programs - Elementary / Secondary	<u>Nonspecial Education</u>	<u>Special Education</u>
100 <u>Personnel Services - Salaries</u>		
100 Personnel Services - Salaries	891.00	
Total Personnel Services - Salaries	\$891.00	
200 <u>Personnel Services - Employee Benefits</u>		
220 Social Security Contributions	66.00	
230 PSERS Retirement Contributions	311.00	
260 Workers' Compensation	10.00	
Total Personnel Services - Employee Benefits	\$387.00	
Total 1100 Regular Programs - Elementary / Secondary	\$1,278.00	

LEA : 111312503     Huntingdon Area SD

Printed 2/13/2023 9:23:41 AM

1110 Regular Programs	<u>Nonspecial Education</u>	<u>Special Education</u>
100 <u>Personnel Services - Salaries</u>		
100 Personnel Services - Salaries	891.00	
<b>Total Personnel Services - Salaries</b>	<b>\$891.00</b>	
200 <u>Personnel Services - Employee Benefits</u>		
220 Social Security Contributions	66.00	
230 PSERS Retirement Contributions	311.00	
260 Workers' Compensation	10.00	
<b>Total Personnel Services - Employee Benefits</b>	<b>\$387.00</b>	
<b>Total 1110 Regular Programs</b>	<b>\$1,278.00</b>	