

LEA Name : Huntingdon Area SD
Address : 2400 Cassady Ave
Huntingdon, PA 16652

County : Huntingdon
AUN Number : 111312503
LEA Type : SD

Annual Financial Report Accuracy Certification Statement

For Fiscal Year Ending

6/30/2021

Pennsylvania Department of Education

&

Office of Comptroller Operations

PDE-2056: Intermediate Unit

PDE-2057: School District, AVTS/CTC, Charter School,
and Special Program Jointure

CERTIFICATION: By signing this page I agree that the electronic data submitted is a complete and accurate statement of the financial operations and status of the local education agency for the fiscal year. It has been prepared in accordance with generally accepted accounting principles and established Commonwealth of PA reporting guidelines.



Chief School Administrator Signature

Date

3/24/2022



Board Secretary Signature

Date

3/24/2022

Matthew R Gibson

Contact Person

(814)641-2120

Ext :

Contact Person Telephone Number

mgibson@huntsd.org

Contact Person E-mail Address

Contact Person Fax Number

Audit Certification

Annual Financial Report:

For Fiscal Year Ending 6/30/2021

(Pursuant to PA School Code Section 218(b))

LEA Name : Huntingdon Area SD

AUN Number : 111312503


County : Huntingdon

Audit Certification Due:
12/31/2021

This certification is applicable to the Annual Financial Report data submitted through the Consolidated Financial Reporting System (CFRS).

CERTIFICATION: By signing this page I agree that the financial statements of the school have been properly audited as noted above pursuant to Article XXIV, and in the auditor's professional opinion, the Annual Financial Report (PDE-2057) submitted through CFRS is materially consistent with the audited financial statements.

Chief School Administrator


Signature

Date

3/24/2022

Board/Secretary


Signature

Date

3/24/2022

Matthew R Gibson

Contact Person

mgibson@huntsd.org

Contact Person E-mail Address

(814)641-2120

Contact Person Telephone Number

Ext :

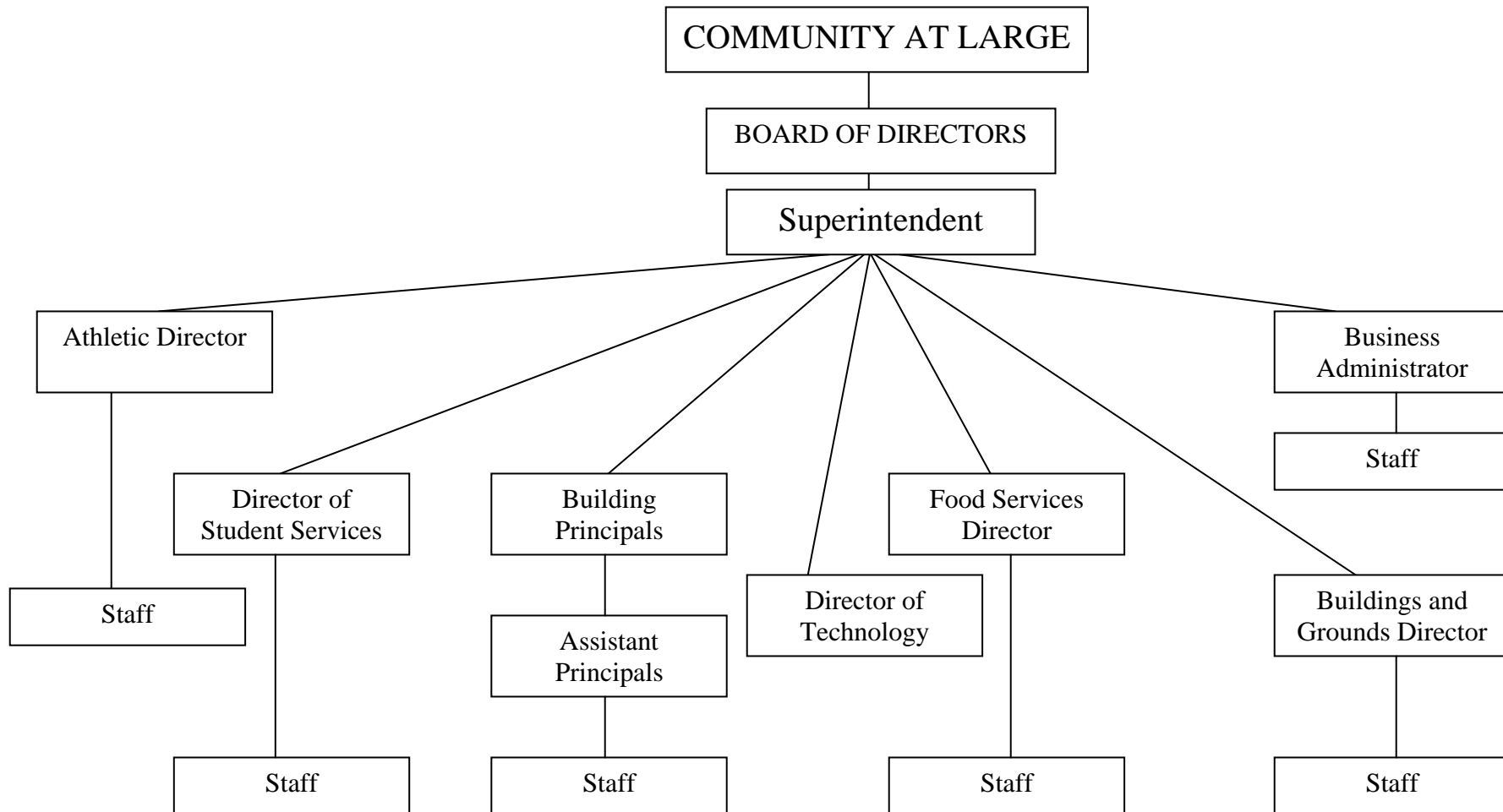
Contact Person Fax Number

HUNTINGDON AREA SCHOOL DISTRICT

SECTION: LOCAL BOARD PROCEDURES

TITLE: ORGANIZATION CHART

REVISED: June 2021





Book	Policy Manual
Section	600 Finances
Title	GASB Statement 34
Code	622
Status	Active
Legal	1. 24 P.S. 218 2. 24 P.S. 613 Governmental Accounting Standards Board, Statement No. 34
Adopted	October 17, 2016

Purpose

The Board recognizes the need to implement the required accounting and financial reporting standards stipulated by the Pennsylvania Department of Education.

The primary objectives of implementing the Governmental Accounting Standards Board (GASB) Statement 34 are to assure compliance with state requirements, and properly account for both the financial and economic resources of the district.

Authority

Participation of the school district in any such activity shall be in accordance with Board policy.[\[1\]](#)[\[2\]](#)

Delegation of Responsibility

The responsibility to coordinate the compilation and preparation of all information necessary to implement this policy is delegated to the Business Manager.

The designated individual shall be responsible for implementing the necessary procedures to establish and maintain a fixed asset inventory, including depreciation schedules. Depreciation shall be computed on a straight-line basis over the useful lives of the assets, using an averaging convention. Normal maintenance and repairs shall be charged to expense as incurred; major renewals and betterments that materially extend the life or increase the value of the asset shall be capitalized. A schedule of accumulated depreciation shall be consistent from year to year. The basis for depreciation, including groups of assets and useful lives, shall be in writing and submitted for review to the Board.

The Business Manager shall prepare the required Management Discussion and Analysis (MD&A). The MD&A shall be in the form required by GASB Statement 34 and shall be submitted to the Board for approval, prior to publication.

Prior to submission of the MD&A for Board approval, the district's independent auditors shall review the MD&A, in accordance with SAS No. 52, "Required Supplementary Information".

<u>Val Number</u>	<u>Description</u>	<u>Justification</u>
14070	NAP - Fund 51: Data has been entered for line 0147 - Due From Component Units. Identify the Component Unit NAP 0147, Fund 51: \$48,868.00	Due from General Fund
50075	SOIN: Governmental Fund, General Obligation Bond reductions exceed the amount reported as GOB principal payment expenditures in Functions 5110 and 5120, Object 910. Correct or provide a justification. SOIN, GOB Reduction: \$1,065,000.00 Expenditure Detail, Function 5110 and 5120, Object 910: \$1,061,026.60	Bond 2020A has a negative amount of -3973.40 reported for FY 2020-21. System will not allow entry of this amount. Amount matches audited financial statements.
50450	SESS - 2350 Legal and Accounting Services: SESS Schedule amounts for Special Education vary from prior year by 40% or more. Correct the data or enter a justification. SESS Schedule 2350: \$14,605.10 Prior Year SESS Schedule 2350: \$36,324.50	Special Education consultations and cases
50600	HCB Schedule, Enterprise Fund Total cannot exceed REP report for Object 200, all Functions total reported for all Enterprise Funds. HCBS, Enterprise Fund Total: \$162,092.16 REP, Object 200, Enterprise Fund: \$87,747.00	HCB does not include negative adjustments for OPEB liability.

LEA : 111312503 Huntingdon Area SD

Printed 10/26/2022 9:23:02 AM

Amounts Expressed in Whole Dollars		<u>General Fund</u> <u>(10)</u>	<u>Student Sponsored</u> <u>Activity Fund</u> <u>(21)</u>	<u>Public Purpose Trust</u> <u>(27)</u>	<u>Other Compt Approved</u> <u>(28)</u>	<u>Athletic / Activity</u> <u>(29)</u>
Assets And Deferred Outflows Of Resources						
Assets						
0100	Cash and Cash Equivalents	303,689				
0110	Investments	7,859,635				
0120	Taxes Receivable	598,762				
0130	Due From Other Funds	48,868				
0141	Due From Other Governments	1,195,574				
0142	State Revenue Receivable					
0143	Federal Revenue Receivable					
0145	Other Intergovernmental Revenue Receivable					
0146	Due from Primary Government					
0147	Due from Component Unit					
0150	Other Receivables	16,743				
0170	Inventories					
0180	Prepaid Expenses (Expenditures)					
0190	Other Current Assets					
Total Assets		\$10,023,271				
0910	Deferred Outflows of Resources					
Total Assets And Deferred Outflows Of Resources		\$10,023,271				

LEA : 111312503 Huntingdon Area SD

Printed 10/26/2022 9:23:02 AM

Amounts Expressed in Whole Dollars		<u>Capital Reserve (690.</u> <u>1850)</u> <u>(31)</u>	<u>Capital Reserve (1431)</u> <u>(32)</u>	<u>Other Capital Projects</u> <u>Fund</u> <u>(39)</u>	<u>Debt Service</u> <u>(40)</u>	<u>Permanent</u> <u>(90)</u>
Assets And Deferred Outflows Of Resources						
Assets						
0100	Cash and Cash Equivalents		2,332,133			
0110	Investments					
0120	Taxes Receivable					
0130	Due From Other Funds					
0141	Due From Other Governments					
0142	State Revenue Receivable					
0143	Federal Revenue Receivable					
0145	Other Intergovernmental Revenue Receivable					
0146	Due from Primary Government					
0147	Due from Component Unit					
0150	Other Receivables					
0170	Inventories					
0180	Prepaid Expenses (Expenditures)					
0190	Other Current Assets					
Total Assets			\$2,332,133			
0910	Deferred Outflows of Resources					
Total Assets And Deferred Outflows Of Resources			\$2,332,133			

LEA : 111312503 Huntingdon Area SD

Printed 10/26/2022 9:23:02 AM

Amounts Expressed in Whole Dollars		<u>Total Governmental</u>
		<u>Funds</u>
Assets And Deferred Outflows Of Resources		
Assets		
0100 Cash and Cash Equivalents	2,635,822	
0110 Investments	7,859,635	
0120 Taxes Receivable	598,762	
0130 Due From Other Funds	48,868	
0141 Due From Other Governments	1,195,574	
0142 State Revenue Receivable		
0143 Federal Revenue Receivable		
0145 Other Intergovernmental Revenue Receivable		
0146 Due from Primary Government		
0147 Due from Component Unit		
0150 Other Receivables	16,743	
0170 Inventories		
0180 Prepaid Expenses (Expenditures)		
0190 Other Current Assets		
Total Assets	\$12,355,404	
0910 Deferred Outflows of Resources		
Total Assets And Deferred Outflows Of Resources	\$12,355,404	

LEA : 111312503 Huntingdon Area SD

Printed 10/26/2022 9:23:02 AM

Amounts Expressed in Whole Dollars	<u>General Fund</u> <u>(10)</u>	<u>Student Sponsored</u> <u>Activity Fund</u> <u>(21)</u>	<u>Public Purpose Trust</u> <u>(27)</u>	<u>Other Compt Approved</u> <u>(28)</u>	<u>Athletic / Activity</u> <u>(29)</u>
Liabilities And Deferred Inflows Of Resources And Fund Balances					
Liabilities					
0400 Due to Other Funds	43,849				
0411 Due to Other Governments					
0412 Due to Primary Government					
0413 Due to Component Unit					
0420 Accounts Payable	1,991,726				
0430 Contracts Payable					
0440 Current Portion of Long-Term Debt					
0450 Short-Term Payables					
0461 Accrued Salaries and Benefits	2,529,305				
0462 Payroll Deductions and Withholding	1,233,877				
0480 Unearned Revenues	302,458				
0490 Other Current Liabilities	273,281				
Total Liabilities	\$6,374,496				
0950 Deferred Inflows of Resources					
Fund Balances					
0810 Nonspendable Fund Balance					
0820 Restricted Fund Balance					
0830 Committed Fund Balance	1,147,169				
0840 Assigned Fund Balance	2,501,606				
0850 Unassigned Fund Balance					
Total Fund Balances	\$3,648,775				
Total Liabilities, Deferred Inflows Of Resources And Fund Balances	\$10,023,271				

LEA : 111312503 Huntingdon Area SD

Printed 10/26/2022 9:23:02 AM

Amounts Expressed in Whole Dollars		<u>Capital Reserve (690.</u> <u>1850)</u> <u>(31)</u>	<u>Capital Reserve (1431)</u> <u>(32)</u>	<u>Other Capital Projects</u> <u>Fund</u> <u>(39)</u>	<u>Debt Service</u> <u>(40)</u>	<u>Permanent</u> <u>(90)</u>
Liabilities And Deferred Inflows Of Resources And Fund Balances						
Liabilities						
0400	Due to Other Funds					
0411	Due to Other Governments					
0412	Due to Primary Government					
0413	Due to Component Unit					
0420	Accounts Payable					
0430	Contracts Payable					
0440	Current Portion of Long-Term Debt					
0450	Short-Term Payables					
0461	Accrued Salaries and Benefits					
0462	Payroll Deductions and Withholding					
0480	Unearned Revenues					
0490	Other Current Liabilities					
Total Liabilities						
0950	Deferred Inflows of Resources			(13,844)		
Fund Balances						
0810	Nonspendable Fund Balance					
0820	Restricted Fund Balance		2,332,133			
0830	Committed Fund Balance					
0840	Assigned Fund Balance			13,844		
0850	Unassigned Fund Balance					
Total Fund Balances			\$2,332,133	\$13,844		
Total Liabilities, Deferred Inflows Of Resources And Fund Balances			\$2,332,133			

LEA : 111312503 Huntingdon Area SD

Printed 10/26/2022 9:23:02 AM

Amounts Expressed in Whole Dollars		<u>Total Governmental Funds</u>
Liabilities And Deferred Inflows Of Resources And Fund Balances		
Liabilities		
0400 Due to Other Funds		43,849
0411 Due to Other Governments		
0412 Due to Primary Government		
0413 Due to Component Unit		
0420 Accounts Payable		1,991,726
0430 Contracts Payable		
0440 Current Portion of Long-Term Debt		
0450 Short-Term Payables		
0461 Accrued Salaries and Benefits		2,529,305
0462 Payroll Deductions and Withholding		1,233,877
0480 Unearned Revenues		302,458
0490 Other Current Liabilities		273,281
Total Liabilities		\$6,374,496
0950 Deferred Inflows of Resources		(13,844)
Fund Balances		
0810 Nonspendable Fund Balance		
0820 Restricted Fund Balance		2,332,133
0830 Committed Fund Balance		1,147,169
0840 Assigned Fund Balance		2,515,450
0850 Unassigned Fund Balance		
Total Fund Balances		\$5,994,752
Total Liabilities, Deferred Inflows Of Resources And Fund Balances		\$12,355,404

LEA : 111312503 Huntingdon Area SD

Printed 10/26/2022 9:23:11 AM

Amounts Expressed in Whole Dollars	<u>General Fund</u> <u>(10)</u>	<u>Student Sponsored</u> <u>Activity Fund</u> <u>(21)</u>	<u>Public Purpose Trust</u> <u>(27)</u>	<u>Other Compt Approved</u> <u>(28)</u>	<u>Athletic / Activity</u> <u>(29)</u>
Revenues					
6000 Revenue from Local Sources	13,894,794				
7000 Revenue from State Sources	16,073,597				
8000 Revenue from Federal Sources	2,318,164				
Total Revenues	\$32,286,555				
Expenditures					
1000 Instruction	19,248,912				
2000 Support Services	10,240,894				
3000 Operation of Non-Instructional Services	472,022				
4000 Facilities Acquisition, Construction and Improvement Services					
5110 Debt Service	2,046,360				
5130 Refund of Prior Year Revenues / Receipts					
Total Expenditures	\$32,008,188				
Excess (Deficiency) Of Revenues Over Expenditures	\$278,367				
Other Financing Sources (Uses)					
9110 Face Value of Bonds Issued					
9120 Proceeds from Refunding of Bonds					
9130 Bond Premiums					
9200 Proceeds from Extended-Term Financing and Leases					
9300 Interfund Transfers - IN					
9400 Sale of or Compensation for Loss of Fixed Assets					
9710 Transfers from Component Units					
9720 Transfers from Primary Governments					
9910 Other Financing Sources Not Listed in the 9000 Series					
9990 Insurance Recoveries					
5120 Debt Service – Refunded Bonds					
5150 Bond Discounts					
5200 Interfund Transfers – Out	175,000				
5300 Transfers Out to Component Units/Primary Governments					
Total Other Financing Sources (Uses)	(\$175,000)				

LEA : 111312503 Huntingdon Area SD

Printed 10/26/2022 9:23:11 AM

Amounts Expressed in Whole Dollars		<u>Capital Reserve (690.1850)</u> <u>(31)</u>	<u>Capital Reserve (1431)</u> <u>(32)</u>	<u>Other Capital Projects</u> <u>Fund</u> <u>(39)</u>	<u>Debt Service</u> <u>(40)</u>	<u>Permanent</u> <u>(90)</u>
Revenues						
6000	Revenue from Local Sources		19,081	722		
7000	Revenue from State Sources					
8000	Revenue from Federal Sources					
Total Revenues			\$19,081	\$722		
Expenditures						
1000	Instruction					
2000	Support Services					
3000	Operation of Non-Instructional Services					
4000	Facilities Acquisition, Construction and Improvement Services			3,660,554		
5110	Debt Service					
5130	Refund of Prior Year Revenues / Receipts					
Total Expenditures				\$3,660,554		
Excess (Deficiency) Of Revenues Over Expenditures			\$19,081	(\$3,659,832)		
Other Financing Sources (Uses)						
9110	Face Value of Bonds Issued					
9120	Proceeds from Refunding of Bonds					
9130	Bond Premiums					
9200	Proceeds from Extended-Term Financing and Leases					
9300	Interfund Transfers - IN					
9400	Sale of or Compensation for Loss of Fixed Assets					
9710	Transfers from Component Units					
9720	Transfers from Primary Governments					
9910	Other Financing Sources Not Listed in the 9000 Series					
9990	Insurance Recoveries					
5120	Debt Service – Refunded Bonds					
5150	Bond Discounts					
5200	Interfund Transfers – Out					
5300	Transfers Out to Component Units/Primary Governments					
Total Other Financing Sources (Uses)						

Amounts Expressed in Whole Dollars		<u>Total Governmental Funds</u>
Revenues		
6000	Revenue from Local Sources	13,914,597
7000	Revenue from State Sources	16,073,597
8000	Revenue from Federal Sources	2,318,164
Total Revenues		\$32,306,358
Expenditures		
1000	Instruction	19,248,912
2000	Support Services	10,240,894
3000	Operation of Non-Instructional Services	472,022
4000	Facilities Acquisition, Construction and Improvement Services	3,660,554
5110	Debt Service	2,046,360
5130	Refund of Prior Year Revenues / Receipts	
Total Expenditures		\$35,668,742
Excess (Deficiency) Of Revenues Over Expenditures		(\$3,362,384)
Other Financing Sources (Uses)		
9110	Face Value of Bonds Issued	
9120	Proceeds from Refunding of Bonds	
9130	Bond Premiums	
9200	Proceeds from Extended-Term Financing and Leases	
9300	Interfund Transfers - IN	
9400	Sale of or Compensation for Loss of Fixed Assets	
9710	Transfers from Component Units	
9720	Transfers from Primary Governments	
9910	Other Financing Sources Not Listed in the 9000 Series	
9990	Insurance Recoveries	
5120	Debt Service – Refunded Bonds	
5150	Bond Discounts	
5200	Interfund Transfers – Out	175,000
5300	Transfers Out to Component Units/Primary Governments	
Total Other Financing Sources (Uses)		(\$175,000)

Amounts Expressed in Whole Dollars		<u>General Fund</u> <u>(10)</u>	<u>Student Sponsored</u> <u>Activity Fund</u> <u>(21)</u>	<u>Public Purpose Trust</u> <u>(27)</u>	<u>Other Compt Approved</u> <u>(28)</u>	<u>Athletic / Activity</u> <u>(29)</u>
Special And Extraordinary Items						
9920	Special Items – Gains					
9930	Extraordinary Items – Gains					
5520	Special Items – Losses					
5530	Extraordinary Items – Losses					
Net Change In Fund Balances		\$103,367				
Fund Balance						
0001	Fund Balance - Beginning of Fiscal Year	3,545,403				
Fund Balance - End Of Year		\$3,648,770				

Amounts Expressed in Whole Dollars		<u>Capital Reserve (690.</u> <u>1850)</u> <u>(31)</u>	<u>Capital Reserve (1431)</u> <u>(32)</u>	<u>Other Capital Projects</u> <u>Fund</u> <u>(39)</u>	<u>Debt Service</u> <u>(40)</u>	<u>Permanent</u> <u>(90)</u>
Special And Extraordinary Items						
9920	Special Items – Gains					
9930	Extraordinary Items – Gains					
5520	Special Items – Losses					
5530	Extraordinary Items – Losses					
Net Change In Fund Balances			\$19,081	(\$3,659,832)		
Fund Balance						
0001	Fund Balance - Beginning of Fiscal Year		2,313,052	3,673,676		
Fund Balance - End Of Year			\$2,332,133	\$13,844		

Amounts Expressed in Whole Dollars		<u>Total Governmental</u> <u>Funds</u>
Special And Extraordinary Items		
9920	Special Items – Gains	
9930	Extraordinary Items – Gains	
5520	Special Items – Losses	
5530	Extraordinary Items – Losses	
Net Change In Fund Balances		(\$3,537,384)
Fund Balance		
0001	Fund Balance - Beginning of Fiscal Year	9,532,131
Fund Balance - End Of Year		\$5,994,747

LEA : 111312503 Huntingdon Area SD

Printed 10/26/2022 9:23:13 AM

Amounts Expressed in Whole Dollars	<u>Food Service</u> <u>(51)</u>	<u>Child Care</u> <u>Operations</u> <u>(52)</u>	<u>Other Enterprise</u> <u>(58)</u>	<u>TOTAL</u>	<u>Internal Service</u> <u>(60)</u>
Assets And Deferred Outflows Of Resources					
Current Assets					
0100 Cash and Cash Equivalents	88,317			88,317	
0110 Investments					
0130 Due From Other Funds					
0141 Due From Other Governments	43,849			43,849	
0142 State Revenue Receivable					
0143 Federal Revenue Receivable					
0146 Due from Primary Government					
0147 Due from Component Unit	48,868			48,868	
0150 Other Receivables	97,263			97,263	
0170 Inventories	6,376			6,376	
0180 Prepaid Expenses (Expenditures)					
0190 Other Current Assets					
Total Current Assets	\$284,673			\$284,673	
Noncurrent Assets					
0211 Land					
0212 Site Improvements (Net)					
0220 Buildings and Building Improvements (Net)					
0230 Machinery, Equipment and Furniture (Net)	666			666	
0250 Construction in Progress					
0260 Long Term Prepayments					
0290 Other Noncurrent Assets					
Total Noncurrent Assets	\$666			\$666	
0910 Deferred Outflows of Resources	77,235			77,235	
Total Assets And Deferred Outflows Of Resources	\$362,574			\$362,574	

LEA : 111312503 Huntingdon Area SD

Printed 10/26/2022 9:23:13 AM

Amounts Expressed in Whole Dollars	<u>Food Service</u> <u>(51)</u>	<u>Child Care</u> <u>Operations</u> <u>(52)</u>	<u>Other Enterprise</u> <u>(58)</u>	<u>TOTAL</u>	<u>Internal Service</u> <u>(60)</u>
Liabilities And Deferred Inflows Of Resources And Net Position					
Current Liabilities					
0400 Due to Other Funds	48,868			48,868	
0411 Due to Other Governments					
0413 Due to Component Unit					
0420 Accounts Payable	6,874			6,874	
0430 Contracts Payable					
0440 Current Portion of Long-Term Debt					
0450 Short-Term Payables					
0461 Accrued Salaries and Benefits					
0462 Payroll Deductions and Withholding					
0480 Unearned Revenues	27,448			27,448	
0490 Other Current Liabilities					
Total Current Liabilities	\$83,190			\$83,190	
Noncurrent Liabilities					
0510 Bonds Payable					
0520 Extended-Term Financing Agreements Payable					
0530 Lease Obligations					
0540 Accumulated Compensated Absences	22,957			22,957	
0550 Authority Lease Obligations					
0560 Other Post-Employment Benefits (OPEB)	142,834			142,834	
0570 Net Pension Liability	918,507			918,507	
0599 Other Noncurrent Liabilities					
Total Noncurrent Liabilities	\$1,084,298			\$1,084,298	
Total Liabilities	\$1,167,488			\$1,167,488	
0950 Deferred Inflows of Resources	27,274			27,274	
Net Position					
0791 Net Investment in Capital Assets	666			666	
0008 Restricted Net Position (0792 – 0798)					
0799 Unrestricted Net Position	(832,854)			(832,854)	
Total Net Position	(\$832,188)			(\$832,188)	
Total Liabilities And Deferred Inflows Of Resources And Net Position	\$362,574			\$362,574	

Amounts Expressed in Whole Dollars	<u>Food Service</u> <u>(51)</u>	<u>Child Care Operations</u> <u>(52)</u>	<u>Other Enterprise</u> <u>(58)</u>	<u>TOTAL</u>	<u>Internal Service</u> <u>(60)</u>
Operating Revenues					
6600 Food Service Revenue	33,694			33,694	
0071 Charges for Services					
0072 Other Operating Revenue					
Total Operating Revenues	\$33,694			\$33,694	
Operating Expenses					
100 Personnel Services – Salaries	293,853			293,853	
200 Personnel Services – Employee Benefits	87,747			87,747	
300 Purchased Professional and Technical Services					
400 Purchased Property Services					
500 Other Purchased Services	417,079			417,079	
600 Supplies	73,169			73,169	
740 Depreciation	1,894			1,894	
810 Dues and Fees					
880 Refunds of Prior Years' Receipts					
890 Miscellaneous Expenditures					
Total Operating Expenses	\$873,742			\$873,742	
Operating Income (Loss)	(\$840,048)			(\$840,048)	
Non Operating Revenues (Expenses)					
6500 Earnings on Investments					
6920 Contributions and Donations from Private Sources					
6930 Gains or Losses on Sale of Fixed Assets					
6991 Refunds of a Prior Year Expenditure					
7000 Revenue from State Sources	8,647			8,647	
8000 Revenue from Federal Sources	869,047			869,047	
9990 Insurance Recoveries					
820 Claims and Judgments Against the LEA					
830 Interest					
TOTAL Non Operating Revenues (Expenses)	\$877,694			\$877,694	
Income (Loss) Before Contributions And Transfers	\$37,646			\$37,646	

Amounts Expressed in Whole Dollars	<u>Food Service</u> <u>(51)</u>	<u>Child Care Operations</u> <u>(52)</u>	<u>Other Enterprise</u> <u>(58)</u>	<u>TOTAL</u>	<u>Internal Service</u> <u>(60)</u>
Contributions, Transfers, and Special and Extraordinary Items					
5200 Interfund Transfers – Out					
5300 Transfers Out to Component Units/Primary Governments					
5520 Special Items – Losses					
5530 Extraordinary Items – Losses					
9300 Interfund Transfers - IN	175,000			175,000	
9500 Capital Contributions					
9700 Transfers IN From Component Units/Primary Governments					
9920 Special Items – Gains					
9930 Extraordinary Items – Gains					
Change In Net Position	\$212,646			\$212,646	
0002 Net Position - Beginning of Fiscal Year	(1,044,834)			(1,044,834)	
0003 Accounting Changes / Residual Equity Transfers					
Net Position - End Of Year	(\$832,188)			(\$832,188)	

LEA : 111312503 Huntingdon Area SD

Printed 10/26/2022 9:23:24 AM

Amounts Expressed in Whole Dollars		<u>Food Service</u> <u>(51)</u>	<u>Child Care Operations</u> <u>(52)</u>	<u>Other Enterprise</u> <u>(58)</u>	<u>TOTAL</u>	<u>Internal Service(60)</u>
Cash Flows From Operating Activities						
0011	Cash Receipts From Users	61,098			61,098	
0012	Cash Receipts From Assessments Made to Other Funds					
0013	Cash Receipts From Earnings on Investments					
0014	Cash Receipts From Other Operating Revenue					
0015	Cash Payments To Employees For Services	587,320			587,320	
0016	Cash Payments For Insurance Claims					
0017	Cash Payments To Suppliers For Goods and Services	494,870			494,870	
0018	Cash Payments For Other Operating Expenses					
Net Cash Provided By (Used For) Operating Activities		(\$1,021,092)			(\$1,021,092)	
Cash Flows From Non-Capital Financing Activities						
0021	Receipts From Local Sources - 6000					
0022	Receipts From State Sources - 7000	8,647			8,647	
0023	Receipts From Federal Sources -8000	837,727			837,727	
0024	Notes and Loans Received (Repaid)					
0025	Interest Paid on Notes/Loans - 5100-830					
0026	Operating Transfers In (Out)/Residual Equity Trans					
0027	Operating Transfers In (Out) Primary Government / Comp Unit	175,000			175,000	
0028	Receipts From Refund of Prior Year Expenditures - 6991					
0029	Special and Extraordinary Gains (losses)					
0030	Receipts from Insurance Recoveries -9990					
Net Cash Prov By (Used for) Non-Capital Financing Activities		\$1,021,374			\$1,021,374	
Cash Flows From Capital and Related Financing Activities						
0031	Payments For Fac Acq, Const, and Imp - 4000					
0032	Gain / (Loss) on Sale of Fixed Assets - 6930					
0033	Proceeds From Extended Term Financing - 9200					
0034	Principal Paid on Financing Agreements					
0035	Interest Paid on Financing Agreements - 5100-830					
0036	(Inc) Dec in Contributed Capital					
Net Cash Prov By (Used for) Capital and Related Financing Activities						
Cash Flows From Investing Activities						
0041	Earnings on Investments - 6500					
0042	Purchase of Inv Securities / Deposits to Inv Pools					
0043	Receipts From Investment Pool Withdrawals					
0044	Proceeds from Sale and Maturity of Inv Securities					

LEA : 111312503 Huntingdon Area SD

Printed 10/26/2022 9:23:24 AM

0045 Loans Received (Paid)

Net Cash Prov By (Used for) Investing Activities

LEA : 111312503 Huntingdon Area SD

Printed 10/26/2022 9:23:24 AM

	Food Service (51)	Child Care Operations (52)	Other Enterprise (58)	TOTAL	Internal Service (60)
Net Increase (Decrease) in Cash Flows	282			282	
0004 Cash and Cash Equivalents Beginning of Year	88,035			88,035	
Cash and Cash Equivalents at Year End	\$88,317			\$88,317	
Reconciliation of Operating Income (Loss) To Net Cash Provided by (Used For) Operating Activities					
0005 Operating Income (Loss) per REP	(840,048)			(840,048)	
Adjustments					
0051 Depreciation and Net Amortization	63,635			63,635	
0052 Provision for Uncollectible Accounts					
0053 Other Adjustments	1,894			1,894	
Effect of Changes in Assets, Liabilities, Deferred Outflows and Deferred Inflows					
0054 (Inc) Dec In Accounts Receivable (0120-0150)	(33,704)			(33,704)	
0055 Advances to Other Funds (0160)	(10,680)			(10,680)	
0056 (Inc) Dec in Inventories (0170)	798			798	
0057 (Inc) Dec in Prepaid Expenses (0180)					
0058 (Inc) Dec in Other Current or Noncurrent Assets					
0064 Deferred Outflows (0910)	(25,788)			(25,788)	
0059 Inc (Dec) in Accounts Payable (0400-0450)	(2,857)			(2,857)	
0060 Inc (Dec) in Accrued Salaries/Benefits (0461)	707			707	
0065 Inc (Dec) in Net Pension Liabilities (0570)	(119,516)			(119,516)	
0066 Inc (Dec) in Other Postemp Benefit Oblig (0560)	(22,792)			(22,792)	
0061 Inc (Dec) in Payroll Deductions/Withholding (0462)					
0062 Inc (Dec) in Unearned Revenue (0480)	5,590			5,590	
0063 Inc (Dec) in Other Current or Noncurrent Liabilities					
0067 Deferred Inflows (0950)	(38,331)			(38,331)	
Total Adjustments	(\$181,044)			(\$181,044)	
Cash Provided By (Used for) Total	(\$1,021,092)			(\$1,021,092)	

COMBINED STATEMENT OF CASH FLOWS
SCHEDULE OF NONCASH INVESTING, CAPITAL, AND FINANCING ACTIVITIES

Explanation of Transaction and Balance Sheet Effect	Amount
Total	

LEA : 111312503 Huntingdon Area SD

Printed 10/26/2022 9:23:26 AM

Amounts Expressed in Whole Dollars		<u>Private Purpose Trust</u> <u>(71)</u>	<u>Investment Trust</u> <u>(72)</u>	<u>Pension Trust</u> <u>(73)</u>	<u>Student Activity Custodial</u> <u>(81)</u>
Assets And Deferred Outflows Of Resources					
Assets					
0100	Cash and Cash Equivalents				62,533
0110	Investments				
0130	Due From Other Funds				
0140	Due from Other Governments, Primary Government and Component Units				
0150	Other Receivables				
0170	Inventories				
0180	Prepaid Expenses (Expenditures)				
0190	Other Current Assets				
0220	Buildings and Building Improvements (Net)				
0230	Machinery, Equipment and Furniture (Net)				
Total Assets					\$62,533
0910	Deferred Outflows of Resources				
Total Assets And Deferred Outflows Of Resources					\$62,533

LEA : 111312503 Huntingdon Area SD

Printed 10/26/2022 9:23:26 AM

Amounts Expressed in Whole Dollars		<u>Other Custodial</u> <u>(89)</u>	<u>Fiduciary Component Units</u> <u>(98)</u>	<u>Total Fiduciary Funds</u>
Assets And Deferred Outflows Of Resources				
Assets				
0100	Cash and Cash Equivalents			62,533
0110	Investments			
0130	Due From Other Funds			
0140	Due from Other Governments, Primary Government and Component Units			
0150	Other Receivables			
0170	Inventories			
0180	Prepaid Expenses (Expenditures)			
0190	Other Current Assets			
0220	Buildings and Building Improvements (Net)			
0230	Machinery, Equipment and Furniture (Net)			
Total Assets				\$62,533
0910	Deferred Outflows of Resources			
Total Assets And Deferred Outflows Of Resources				\$62,533

LEA : 111312503 Huntingdon Area SD

Printed 10/26/2022 9:23:26 AM

Amounts Expressed in Whole Dollars		<u>Private Purpose Trust</u>	<u>Investment Trust</u>	<u>Pension Trust</u>	<u>Student Activity Custodial</u>
		<u>(71)</u>	<u>(72)</u>	<u>(73)</u>	<u>(81)</u>
Liabilities, Deferred Inflows Of Resources And Net Position					
Liabilities					
0400	Due to Other Funds				
0410	Due to Other Governments, Primary Government and Component Units				
0420	Accounts Payable				342
0430	Contracts Payable				
0450	Short-Term Payables				
0460	Payroll Accruals and Withholdings				
0480	Unearned Revenues				
0490	Other Current Liabilities				
Total Liabilities					\$342
0950	Deferred Inflows of Resources				
Net Position					
0791	Net Investment in Capital Assets				
0009	Restricted Net Position (0792 – 0798)				62,191
0799	Unrestricted Net Position				
Total Net Position					\$62,191
Total Liabilities, Deferred Inflows Of Resources And Net Position					\$62,533

LEA : 111312503 Huntingdon Area SD

Printed 10/26/2022 9:23:26 AM

Amounts Expressed in Whole Dollars		<u>Other Custodial</u> <u>(89)</u>	<u>Fiduciary Component Units</u> <u>(98)</u>	<u>Total Fiduciary Funds</u>
Liabilities, Deferred Inflows Of Resources And Net Position				
Liabilities				
0400	Due to Other Funds			
0410	Due to Other Governments, Primary Government and Component Units			
0420	Accounts Payable			342
0430	Contracts Payable			
0450	Short-Term Payables			
0460	Payroll Accruals and Withholdings			
0480	Unearned Revenues			
0490	Other Current Liabilities			
Total Liabilities				\$342
0950	Deferred Inflows of Resources			
Net Position				
0791	Net Investment in Capital Assets			
0009	Restricted Net Position (0792 – 0798)			62,191
0799	Unrestricted Net Position			
Total Net Position				\$62,191
Total Liabilities, Deferred Inflows Of Resources And Net Position				\$62,533

LEA : 111312503 Huntingdon Area SD

Printed 10/26/2022 9:23:27 AM

Amounts Expressed in Whole Dollars	<u>Private Purpose Trust</u> (71)	<u>Investment Trust</u> (72)	<u>Pension Trust</u> (73)	<u>Student Activity</u> <u>Custodial</u> (81)	<u>Other Custodial</u> (89)	<u>Fiduciary Component</u> <u>Units</u> (98)
Additions						
0091 Gifts and Contributions						
0095 Net Investment Earnings						
0092 Other Additions						
Deductions						
0093 Scholarships Awarded						
0094 Other Deductions						
Change In Net Position						
0006 Net Position – Beginning of Fiscal Year				62,191		
0007 Net Position Held in Trust for Pension Benefits						
Net Position - End of Fiscal Year				\$62,191		

LEA : 111312503 Huntingdon Area SD

Printed 10/26/2022 9:23:27 AM

Amounts Expressed in Whole Dollars		<u>Total Fiduciary</u>
		<u>Funds</u>
Additions		
0091	Gifts and Contributions	
0095	Net Investment Earnings	
0092	Other Additions	
Deductions		
0093	Scholarships Awarded	
0094	Other Deductions	
Change In Net Position		
0006	Net Position – Beginning of Fiscal Year	62,191
0007	Net Position Held in Trust for Pension Benefits	
Net Position - End of Fiscal Year		\$62,191

LEA : 111312503 Huntingdon Area SD

General Fund (10)

Printed 10/26/2022 9:23:28 AM

Page - 1 of 3

	Revenue Reported In Current Year	Current Year Tax Accrual	Prior Year Tax Accrual	Taxes Collected In Current Year
Revenue from Local Sources				
6111 Current Real Estate Taxes	9,076,877.17			9,076,877.17
6113 Public Utility Realty Taxes	11,999.93			11,999.93
6114 Payments in Lieu of Current Taxes - State / Local	72,399.10			72,399.10
6120 Current Per Capita Taxes, Section 679	36,584.40			36,584.40
6131 Current Act 1 Earned Income Taxes	1,503,694.49			1,503,694.49
6141 Current Act 511 Per Capita Taxes	41,899.60			41,899.60
6143 Current Act 511 Local Services Taxes	38,920.32			38,920.32
6151 Current Act 511 Earned Income Taxes	1,503,702.21			1,503,702.21
6153 Current Act 511 Real Estate Transfer Taxes	306,202.05			306,202.05
6411 Delinquent Real Estate Taxes	656,448.13			656,448.13
6420 Delinquent Per Capita Taxes, Section 679	4,676.83			4,676.83
6431 Delinquent Act 1 Earned Income Taxes	55,641.26			55,641.26
6440 Delinquent Local Enabling Taxes - Flat Rate Assessments	5,092.76			5,092.76
6451 Delinquent Act 511 Earned Income Taxes	55,703.58			55,703.58
6500 Earnings on Investments	12,085.63			
6700 Revenues from LEA Activities	1,125.00			
6832 Federal IDEA Revenue Received as Pass Through	418,713.74			
6910 Rentals	10,000.00			
6920 Contributions and Donations from Private Sources	750.00			
6941 Regular Day School Tuition	2,002.00			
6942 Summer School Tuition	6,980.00			
6944 Receipts from Other LEAs in Pennsylvania - Education	3,786.12			
6991 Refunds of a Prior Year Expenditure	55,675.61			
6999 Other Revenues Not Specified Above	13,834.05			
TOTAL Revenue from Local Sources	\$13,894,793.98			\$13,369,841.83

	Revenue Reported In Current Year			
<u>Revenue from State Sources</u>				
7111 Basic Education Funding-Formula	8,226,771.76			
7112 Basic Education Funding-Social Security	515,502.37			
7160 Tuition for Orphans Subsidy	42,368.42			
7250 Migratory Children	120.00			
7271 Special Education funds for School-Aged Pupils	1,516,730.50			
7292 Pre-K Counts	145,832.14			
7311 Pupil Transportation Subsidy	1,564,959.08			
7312 Nonpublic and Charter School Pupil Transportation Subsidy	78,925.00			
7320 Rental and Sinking Fund Payments / Building Reimbursement Subsidy	331,811.58			
7330 Health Services (Medical, Dental, Nurse, Act 25)	32,421.98			
7340 State Property Tax Reduction Allocation	672,504.52			
7361 School Safety and Security Grants	267,682.59			
7505 Ready to Learn Block Grant	334,138.00			
7506 PAsmart Grants	6,622.05			
7599 Other State Revenue Not Listed Elsewhere in the 7000 Series	751.27			
7820 State Share of Retirement Contributions	2,344,089.02			
7990 Other Technology Grants	(7,633.00)			
TOTAL Revenue from State Sources	\$16,073,597.28			

	Revenue Reported In Current Year			
<u>Revenue from Federal Sources</u>				
8514 NCLB, Title I - Improving the Academic Achievement of the Disadvantaged	607,756.00			
8515 NCLB, Title II - Preparing, Training and Recruiting High Quality Teachers and Principals	83,757.00			
8517 NCLB, Title IV - 21St Century Schools	45,272.81			
8741 Elementary and Secondary School Emergency Relief Fund (ESSER)	493,026.00			
8743 ESSER II - Elementary and Secondary School Emergency Relief Fund	730,911.00			
8749 Other CARES Act Funding	256,758.00			
8810 School-Based Access Medicaid Reimbursement Program (SBAP) Reimbursements (Access)	93,796.56			
8820 Medical Assistance Reimbursement for Administrative Claiming (Quarterly) Program	6,886.93			
TOTAL Revenue from Federal Sources	\$2,318,164.30			
TOTAL FROM ALL SOURCES	\$32,286,555.56			\$13,369,841.83

LEA : 111312503 Huntingdon Area SD

Printed 10/26/2022 9:23:30 AM

	<u>General Fund (10)</u>	<u>Student Sponsored Activity Fund (21)</u>	<u>Public Purpose Trust (27)</u>	<u>Other Compt Approved (28)</u>	<u>Athletic / Activity (29)</u>	<u>Capital Reserve (690, 1850) (31)</u>
6000 Revenue from Local Sources						
6111 Current Real Estate Taxes	9,076,877.17					
6113 Public Utility Realty Taxes	11,999.93					
6114 Payments in Lieu of Current Taxes - State / Local	72,399.10					
6120 Current Per Capita Taxes, Section 679	36,584.40					
6131 Current Act 1 Earned Income Taxes	1,503,694.49					
6141 Current Act 511 Per Capita Taxes	41,899.60					
6143 Current Act 511 Local Services Taxes	38,920.32					
6151 Current Act 511 Earned Income Taxes	1,503,702.21					
6153 Current Act 511 Real Estate Transfer Taxes	306,202.05					
6411 Delinquent Real Estate Taxes	656,448.13					
6420 Delinquent Per Capita Taxes, Section 679	4,676.83					
6431 Delinquent Act 1 Earned Income Taxes	55,641.26					
6440 Delinquent Local Enabling Taxes - Flat Rate Assessments	5,092.76					
6451 Delinquent Act 511 Earned Income Taxes	55,703.58					
6500 Earnings on Investments	12,085.63					
6700 Revenues from LEA Activities	1,125.00					
6832 Federal IDEA Revenue Received as Pass Through	418,713.74					
6910 Rentals	10,000.00					
6920 Contributions and Donations from Private Sources	750.00					
6941 Regular Day School Tuition	2,002.00					
6942 Summer School Tuition	6,980.00					
6944 Receipts from Other LEAs in Pennsylvania - Education	3,786.12					
6991 Refunds of a Prior Year Expenditure	55,675.61					
6999 Other Revenues Not Specified Above	13,834.05					
6000 Total Revenue from Local Sources	\$13,894,793.98					
7000 Revenue from State Sources						
7111 Basic Education Funding-Formula	8,226,771.76					
7112 Basic Education Funding-Social Security	515,502.37					
7160 Tuition for Orphans Subsidy	42,368.42					
7250 Migratory Children	120.00					
7271 Special Education funds for School-Aged Pupils	1,516,730.50					
7292 Pre-K Counts	145,832.14					
7311 Pupil Transportation Subsidy	1,564,959.08					
7312 Nonpublic and Charter School Pupil Transportation Subsidy	78,925.00					
7320 Rental and Sinking Fund Payments / Building Reimbursement Subsidy	331,811.58					

LEA : 111312503 Huntingdon Area SD

Printed 10/26/2022 9:23:30 AM

	<u>Capital Reserve</u> <u>(1431) (32)</u>	<u>Other Capital</u> <u>Projects Fund (39)</u>	<u>Debt Service (40)</u>	<u>Permanent (90)</u>	<u>Total</u>
6000 Revenue from Local Sources					
6111 Current Real Estate Taxes					9,076,877.17
6113 Public Utility Realty Taxes					11,999.93
6114 Payments in Lieu of Current Taxes - State / Local					72,399.10
6120 Current Per Capita Taxes, Section 679					36,584.40
6131 Current Act 1 Earned Income Taxes					1,503,694.49
6141 Current Act 511 Per Capita Taxes					41,899.60
6143 Current Act 511 Local Services Taxes					38,920.32
6151 Current Act 511 Earned Income Taxes					1,503,702.21
6153 Current Act 511 Real Estate Transfer Taxes					306,202.05
6411 Delinquent Real Estate Taxes					656,448.13
6420 Delinquent Per Capita Taxes, Section 679					4,676.83
6431 Delinquent Act 1 Earned Income Taxes					55,641.26
6440 Delinquent Local Enabling Taxes - Flat Rate Assessments					5,092.76
6451 Delinquent Act 511 Earned Income Taxes					55,703.58
6500 Earnings on Investments	19,081.00	721.56			31,888.19
6700 Revenues from LEA Activities					1,125.00
6832 Federal IDEA Revenue Received as Pass Through					418,713.74
6910 Rentals					10,000.00
6920 Contributions and Donations from Private Sources					750.00
6941 Regular Day School Tuition					2,002.00
6942 Summer School Tuition					6,980.00
6944 Receipts from Other LEAs in Pennsylvania - Education					3,786.12
6991 Refunds of a Prior Year Expenditure					55,675.61
6999 Other Revenues Not Specified Above					13,834.05
6000 Total Revenue from Local Sources	\$19,081.00	\$721.56			\$13,914,596.54
7000 Revenue from State Sources					
7111 Basic Education Funding-Formula					8,226,771.76
7112 Basic Education Funding-Social Security					515,502.37
7160 Tuition for Orphans Subsidy					42,368.42
7250 Migratory Children					120.00
7271 Special Education funds for School-Aged Pupils					1,516,730.50
7292 Pre-K Counts					145,832.14
7311 Pupil Transportation Subsidy					1,564,959.08
7312 Nonpublic and Charter School Pupil Transportation Subsidy					78,925.00
7320 Rental and Sinking Fund Payments / Building Reimbursement Subsidy					331,811.58

LEA : 111312503 Huntingdon Area SD

Printed 10/26/2022 9:23:30 AM

	<u>General Fund (10)</u>	<u>Student Sponsored Activity Fund (21)</u>	<u>Public Purpose Trust (27)</u>	<u>Other Compt Approved (28)</u>	<u>Athletic / Activity (29)</u>	<u>Capital Reserve (690, 1850) (31)</u>
7000 Revenue from State Sources						
7330 Health Services (Medical, Dental, Nurse, Act 25)	32,421.98					
7340 State Property Tax Reduction Allocation	672,504.52					
7361 School Safety and Security Grants	267,682.59					
7505 Ready to Learn Block Grant	334,138.00					
7506 PAsmart Grants	6,622.05					
7599 Other State Revenue Not Listed Elsewhere in the 7000 Series	751.27					
7820 State Share of Retirement Contributions	2,344,089.02					
7990 Other Technology Grants	(7,633.00)					
7000 Total Revenue from State Sources	\$16,073,597.28					
8000 Revenue from Federal Sources						
8514 NCLB, Title I - Improving the Academic Achievement of the Disadvantaged	607,756.00					
8515 NCLB, Title II - Preparing, Training and Recruiting High Quality Teachers and Principals	83,757.00					
8517 NCLB, Title IV - 21st Century Schools	45,272.81					
8741 Elementary and Secondary School Emergency Relief Fund (ESSER)	493,026.00					
8743 ESSER II - Elementary and Secondary School Emergency Relief Fund	730,911.00					
8749 Other CARES Act Funding	256,758.00					
8810 School-Based Access Medicaid Reimbursement Program (SBAP) Reimbursements (Access)	93,796.56					
8820 Medical Assistance Reimbursement for Administrative Claiming (Quarterly) Program	6,886.93					
8000 Total Revenue from Federal Sources	\$2,318,164.30					
Total From All Sources	\$32,286,555.56					

LEA : 111312503 Huntingdon Area SD

Printed 10/26/2022 9:23:30 AM

	<u>Capital Reserve</u> <u>(1431) (32)</u>	<u>Other Capital</u> <u>Projects Fund (39)</u>	<u>Debt Service (40)</u>	<u>Permanent (90)</u>	<u>Total</u>
7000 Revenue from State Sources					
7330 Health Services (Medical, Dental, Nurse, Act 25)					32,421.98
7340 State Property Tax Reduction Allocation					672,504.52
7361 School Safety and Security Grants					267,682.59
7505 Ready to Learn Block Grant					334,138.00
7506 PAsmart Grants					6,622.05
7599 Other State Revenue Not Listed Elsewhere in the 7000 Series					751.27
7820 State Share of Retirement Contributions					2,344,089.02
7990 Other Technology Grants					(7,633.00)
7000 Total Revenue from State Sources					\$16,073,597.28
8000 Revenue from Federal Sources					
8514 NCLB, Title I - Improving the Academic Achievement of the Disadvantaged					607,756.00
8515 NCLB, Title II - Preparing, Training and Recruiting High Quality Teachers and Principals					83,757.00
8517 NCLB, Title IV - 21st Century Schools					45,272.81
8741 Elementary and Secondary School Emergency Relief Fund (ESSER)					493,026.00
8743 ESSER II - Elementary and Secondary School Emergency Relief Fund					730,911.00
8749 Other CARES Act Funding					256,758.00
8810 School-Based Access Medicaid Reimbursement Program (SBAP) Reimbursements (Access)					93,796.56
8820 Medical Assistance Reimbursement for Administrative Claiming (Quarterly) Program					6,886.93
8000 Total Revenue from Federal Sources					\$2,318,164.30
Total From All Sources	\$19,081.00	\$721.56			\$32,306,358.12

LEA : 111312503 Huntingdon Area SD

Printed 10/26/2022 9:23:31 AM

	<u>General Fund (10)</u>	<u>Student Sponsored Activity Fund (21)</u>	<u>Public Purpose Trust (27)</u>	<u>Other Compt Approved (28)</u>	<u>Athletic / Activity (29)</u>	<u>Capital Reserve (690.1850) (31)</u>
Revenue from Local Sources	13,894,793.98					
Revenue from State Sources	16,073,597.28					
Revenue from Federal Sources	2,318,164.30					
Total From All Sources	\$32,286,555.56					

LEA : 111312503 Huntingdon Area SD

Printed 10/26/2022 9:23:31 AM

	<u>Capital Reserve (1431)</u> <u>(32)</u>	<u>Other Capital Projects</u> <u>Fund (39)</u>	<u>Debt Service (40)</u>	<u>Permanent (90)</u>	<u>Total</u>
Revenue from Local Sources	19,081.00	721.56			13,914,596.54
Revenue from State Sources					16,073,597.28
Revenue from Federal Sources					2,318,164.30
Total From All Sources	\$19,081.00	\$721.56			\$32,306,358.12

LEA : 111312503 Huntingdon Area SD

Printed 10/26/2022 9:23:35 AM

General Fund (10)

1000 Instruction	Total
100 <u>Personnel Services – Salaries</u>	
100 Personnel Services – Salaries	8,620,318.28
Total Personnel Services – Salaries	\$8,620,318.28
200 <u>Personnel Services – Employee Benefits</u>	
210 Group Insurance – Contracted Provider	1,980,545.69
220 Social Security Contributions	632,484.31
230 PSERS Retirement Contributions	2,969,523.07
250 Unemployment Compensation	(3,283.09)
260 Workers' Compensation	59,308.87
292 Health Savings Accounts	190,680.00
Total Personnel Services – Employee Benefits	\$5,829,258.85
300 <u>Purchased Professional and Technical Services</u>	
322 Professional Educational Services – Ius	74,481.86
323 Professional Educational Services – Other Educational Agencies	107,866.70
329 Professional Educational Services – Other	689,555.16
330 Other Professional Services	1,890.00
Total Purchased Professional and Technical Services	\$873,793.72
400 <u>Purchased Property Services</u>	
430 Repairs and Maintenance Services	1,160.25
440 Rentals	31,691.72
Total Purchased Property Services	\$32,851.97
500 <u>Other Purchased Services</u>	
510 Student Transportation Services	9,724.28
549 Other Advertising/Public Relations	601.50
561 Tuition To Other School Districts Within the State	73,558.09
562 Tuition To Pennsylvania Charter Schools	2,812,521.77
564 Tuition To Career and Technology Centers	593,124.00
567 Tuition To Approved Private Schools (APS) and PA Chartered Schools for the Deaf and Blind	67,575.52
568 Tuition To Private Residential Rehabilitative Institutions (PRRI) [In-State] and Detention Centers	43,348.01
569 Tuition – Other	280.00
580 Travel	15,302.73
594 IU Payment By Withholding for Institutionalized Children's Programs – Special Classes	677.18
Total Other Purchased Services	\$3,616,713.08
600 <u>Supplies</u>	
610 General Supplies	193,017.46
620 Energy	163.50
630 Food	1,884.75
640 Books and Periodicals	40,043.38
650 Supplies & Fees – Technology Related	34,455.28
Total Supplies	\$269,564.37
700 <u>Property</u>	
762 Capitalized Equipment - Replacement	4,400.00
Total Property	\$4,400.00

LEA : 111312503 Huntingdon Area SD

Printed 10/26/2022 9:23:35 AM

General Fund (10)		
1000 Instruction		<u>Total</u>
800 <u>Other Objects</u>		
810 Dues and Fees		2,011.50
Total Other Objects		\$2,011.50
Total 1000 Instruction		\$19,248,911.77

LEA : 111312503 Huntingdon Area SD

Printed 10/26/2022 9:23:35 AM

General Fund (10)

1100 Regular Programs – Elementary / Secondary

	Elementary	Secondary	Federal	Total
100 <u>Personnel Services – Salaries</u>				
100 Personnel Services – Salaries	2,314,297.52	2,903,270.69	484,296.25	5,701,864.46
Total Personnel Services – Salaries	\$2,314,297.52	\$2,903,270.69	\$484,296.25	\$5,701,864.46
200 <u>Personnel Services – Employee Benefits</u>				
210 Group Insurance – Contracted Provider	444,092.49	694,573.88	99,771.44	1,238,437.81
220 Social Security Contributions	169,691.14	213,035.34	35,864.98	418,591.46
230 PSERS Retirement Contributions	795,382.61	998,925.13	167,045.13	1,961,352.87
250 Unemployment Compensation	(17,463.82)	4,641.41	1,055.44	(11,766.97)
260 Workers' Compensation	(16,342.18)	34,838.50	5,811.52	24,307.84
292 Health Savings Accounts	52,500.00	62,135.14	6,720.00	121,355.14
Total Personnel Services – Employee Benefits	\$1,427,860.24	\$2,008,149.40	\$316,268.51	\$3,752,278.15
300 <u>Purchased Professional and Technical Services</u>				
322 Professional Educational Services – Ius		9,423.87		9,423.87
329 Professional Educational Services – Other	360.00	148,938.75		149,298.75
Total Purchased Professional and Technical Services	\$360.00	\$158,362.62		\$158,722.62
400 <u>Purchased Property Services</u>				
430 Repairs and Maintenance Services	777.25	383.00		1,160.25
440 Rentals	9,377.50	22,072.22		31,449.72
Total Purchased Property Services	\$10,154.75	\$22,455.22		\$32,609.97
500 <u>Other Purchased Services</u>				
510 Student Transportation Services		50.00		50.00
561 Tuition To Other School Districts Within the State		34,696.00		34,696.00
562 Tuition To Pennsylvania Charter Schools		1,705,138.89		1,705,138.89
568 Tuition To Private Residential Rehabilitative Institutions (PRRI) [In-State] and Detention Centers		39,569.91		39,569.91
569 Tuition – Other		280.00		280.00
580 Travel			12,745.00	12,745.00
Total Other Purchased Services		\$1,779,734.80	\$12,745.00	\$1,792,479.80
600 <u>Supplies</u>				
610 General Supplies	40,618.88	52,098.87	32,513.42	125,231.17
640 Books and Periodicals	87.99	4,286.82	17,050.00	21,424.81
650 Supplies & Fees – Technology Related		5,145.08	23,327.20	28,472.28
Total Supplies	\$40,706.87	\$61,530.77	\$72,890.62	\$175,128.26
700 <u>Property</u>				
762 Capitalized Equipment - Replacement		4,400.00		4,400.00
Total Property		\$4,400.00		\$4,400.00
800 <u>Other Objects</u>				
810 Dues and Fees		1,004.00		1,004.00
Total Other Objects		\$1,004.00		\$1,004.00
Total 1100 Regular Programs – Elementary / Secondary	\$3,793,379.38	\$6,938,907.50	\$886,200.38	\$11,618,487.26

LEA : 111312503 Huntingdon Area SD

Printed 10/26/2022 9:23:35 AM

General Fund (10)

1110 Regular Programs

	Elementary	Secondary	Federal	Total
100 <u>Personnel Services – Salaries</u>				
100 Personnel Services – Salaries	2,314,297.52	2,903,270.69	96.00	5,217,664.21
Total Personnel Services – Salaries	\$2,314,297.52	\$2,903,270.69	\$96.00	\$5,217,664.21
200 <u>Personnel Services – Employee Benefits</u>				
210 Group Insurance – Contracted Provider	444,092.49	694,573.88		1,138,666.37
220 Social Security Contributions	169,691.14	213,035.34	6.27	382,732.75
230 PSERS Retirement Contributions	795,382.61	998,925.13	16.56	1,794,324.30
250 Unemployment Compensation	(17,463.82)	4,641.41	0.96	(12,821.45)
260 Workers' Compensation	(16,342.18)	34,838.50	1.15	18,497.47
292 Health Savings Accounts	52,500.00	62,135.14		114,635.14
Total Personnel Services – Employee Benefits	\$1,427,860.24	\$2,008,149.40	\$24.94	\$3,436,034.58
300 <u>Purchased Professional and Technical Services</u>				
322 Professional Educational Services – Ius		9,423.87		9,423.87
329 Professional Educational Services – Other	360.00	148,938.75		149,298.75
Total Purchased Professional and Technical Services	\$360.00	\$158,362.62		\$158,722.62
400 <u>Purchased Property Services</u>				
430 Repairs and Maintenance Services	777.25	383.00		1,160.25
440 Rentals	9,377.50	22,072.22		31,449.72
Total Purchased Property Services	\$10,154.75	\$22,455.22		\$32,609.97
500 <u>Other Purchased Services</u>				
510 Student Transportation Services		50.00		50.00
561 Tuition To Other School Districts Within the State		34,696.00		34,696.00
562 Tuition To Pennsylvania Charter Schools		1,705,138.89		1,705,138.89
568 Tuition To Private Residential Rehabilitative Institutions (PRRI) [In-State] and Detention Centers		39,569.91		39,569.91
569 Tuition – Other		280.00		280.00
Total Other Purchased Services		\$1,779,734.80		\$1,779,734.80
600 <u>Supplies</u>				
610 General Supplies	40,618.88	52,098.87	15,124.66	107,842.41
640 Books and Periodicals	87.99	4,286.82		4,374.81
650 Supplies & Fees – Technology Related		5,145.08		5,145.08
Total Supplies	\$40,706.87	\$61,530.77	\$15,124.66	\$117,362.30
700 <u>Property</u>				
762 Capitalized Equipment - Replacement		4,400.00		4,400.00
Total Property		\$4,400.00		\$4,400.00
800 <u>Other Objects</u>				
810 Dues and Fees		1,004.00		1,004.00
Total Other Objects		\$1,004.00		\$1,004.00
Total 1110 Regular Programs	\$3,793,379.38	\$6,938,907.50	\$15,245.60	\$10,747,532.48

LEA : 111312503 Huntingdon Area SD

Printed 10/26/2022 9:23:35 AM

General Fund (10)

1190 Federally-Funded Regular Programs

	<u>Elementary</u>	<u>Secondary</u>	<u>Federal</u>	<u>Total</u>
100 <u>Personnel Services – Salaries</u>				
100 Personnel Services – Salaries			484,200.25	484,200.25
Total Personnel Services – Salaries			\$484,200.25	\$484,200.25
200 <u>Personnel Services – Employee Benefits</u>				
210 Group Insurance – Contracted Provider			99,771.44	99,771.44
220 Social Security Contributions			35,858.71	35,858.71
230 PSERS Retirement Contributions			167,028.57	167,028.57
250 Unemployment Compensation			1,054.48	1,054.48
260 Workers' Compensation			5,810.37	5,810.37
292 Health Savings Accounts			6,720.00	6,720.00
Total Personnel Services – Employee Benefits			\$316,243.57	\$316,243.57
500 <u>Other Purchased Services</u>				
580 Travel			12,745.00	12,745.00
Total Other Purchased Services			\$12,745.00	\$12,745.00
600 <u>Supplies</u>				
610 General Supplies			17,388.76	17,388.76
640 Books and Periodicals			17,050.00	17,050.00
650 Supplies & Fees – Technology Related			23,327.20	23,327.20
Total Supplies			\$57,765.96	\$57,765.96
Total 1190 Federally-Funded Regular Programs			\$870,954.78	\$870,954.78

LEA : 111312503 Huntingdon Area SD

Printed 10/26/2022 9:23:35 AM

General Fund (10)

1200 Special Programs – Elementary / Secondary

	Elementary	Secondary	Federal	Total
100 Personnel Services – Salaries				
100 Personnel Services – Salaries	1,287,989.65	941,877.12		2,229,866.77
Total Personnel Services – Salaries	\$1,287,989.65	\$941,877.12		\$2,229,866.77
200 Personnel Services – Employee Benefits				
210 Group Insurance – Contracted Provider	397,283.57	234,218.82		631,502.39
220 Social Security Contributions	94,000.96	69,065.50		163,066.46
230 PSERS Retirement Contributions	448,804.85	321,803.01		770,607.86
250 Unemployment Compensation	4,225.74	2,702.33		6,928.07
260 Workers' Compensation	15,540.59	11,197.10		26,737.69
292 Health Savings Accounts	37,654.40	25,765.60		63,420.00
Total Personnel Services – Employee Benefits	\$997,510.11	\$664,752.36		\$1,662,262.47
300 Purchased Professional and Technical Services				
322 Professional Educational Services – Ius	48,754.99	227.10	13,721.26	62,703.35
329 Professional Educational Services – Other	86,789.16	67,467.11	381,051.00	535,307.27
330 Other Professional Services	1,890.00			1,890.00
Total Purchased Professional and Technical Services	\$137,434.15	\$67,694.21	\$394,772.26	\$599,900.62
500 Other Purchased Services				
510 Student Transportation Services	3,019.81	6,654.47		9,674.28
561 Tuition To Other School Districts Within the State		35,532.09		35,532.09
562 Tuition To Pennsylvania Charter Schools		713,396.59	393,986.29	1,107,382.88
567 Tuition To Approved Private Schools (APS) and PA Chartered Schools for the Deaf and Blind	67,575.52			67,575.52
568 Tuition To Private Residential Rehabilitative Institutions (PRRI) [In-State] and Detention Centers		3,778.10		3,778.10
580 Travel	2,557.73			2,557.73
594 IU Payment By Withholding for Institutionalized Children's Programs – Special Classes	338.59	338.59		677.18
Total Other Purchased Services	\$73,491.65	\$759,699.84	\$393,986.29	\$1,227,177.78
600 Supplies				
610 General Supplies	9,591.56	2,900.28	1,478.40	13,970.24
640 Books and Periodicals	11,012.78	4,498.79		15,511.57
Total Supplies	\$20,604.34	\$7,399.07	\$1,478.40	\$29,481.81
800 Other Objects				
810 Dues and Fees		310.00		310.00
Total Other Objects		\$310.00		\$310.00
Total 1200 Special Programs – Elementary / Secondary	\$2,517,029.90	\$2,441,732.60	\$790,236.95	\$5,748,999.45

LEA : 111312503 Huntingdon Area SD

Printed 10/26/2022 9:23:35 AM

General Fund (10)

1210 Life Skills Support

	<u>Elementary</u>	<u>Secondary</u>	<u>Federal</u>	<u>Total</u>
100 <u>Personnel Services – Salaries</u>				
100 Personnel Services – Salaries	228,576.56	140,672.32		369,248.88
Total Personnel Services – Salaries	\$228,576.56	\$140,672.32		\$369,248.88
200 <u>Personnel Services – Employee Benefits</u>				
210 Group Insurance – Contracted Provider	89,113.38	28,385.39		117,498.77
220 Social Security Contributions	16,457.81	10,412.78		26,870.59
230 PSERS Retirement Contributions	78,813.14	48,476.55		127,289.69
250 Unemployment Compensation	1,084.42	637.34		1,721.76
260 Workers' Compensation	2,743.11	1,688.31		4,431.42
292 Health Savings Accounts	12,597.20	1,402.80		14,000.00
Total Personnel Services – Employee Benefits	\$200,809.06	\$91,003.17		\$291,812.23
500 <u>Other Purchased Services</u>				
510 Student Transportation Services	1.14	2.31		3.45
Total Other Purchased Services	\$1.14	\$2.31		\$3.45
600 <u>Supplies</u>				
610 General Supplies	1,758.51	1,364.97		3,123.48
640 Books and Periodicals		671.19		671.19
Total Supplies	\$1,758.51	\$2,036.16		\$3,794.67
Total 1210 Life Skills Support	\$431,145.27	\$233,713.96		\$664,859.23

LEA : 111312503 Huntingdon Area SD

Printed 10/26/2022 9:23:35 AM

General Fund (10)

1220 Sensory Support	Elementary	Secondary	Federal	Total
100 Personnel Services – Salaries				
100 Personnel Services – Salaries	8,226.64	8,226.58		16,453.22
Total Personnel Services – Salaries	\$8,226.64	\$8,226.58		\$16,453.22
200 Personnel Services – Employee Benefits				
210 Group Insurance – Contracted Provider	4,579.70	4,579.70		9,159.40
220 Social Security Contributions	550.06	549.99		1,100.05
230 PSERS Retirement Contributions	2,839.03	2,838.96		5,677.99
260 Workers' Compensation	98.75	98.70		197.45
292 Health Savings Accounts	840.00	840.00		1,680.00
Total Personnel Services – Employee Benefits	\$8,907.54	\$8,907.35		\$17,814.89
300 Purchased Professional and Technical Services				
329 Professional Educational Services – Other	69,131.72	(54,507.87)	162,402.85	177,026.70
Total Purchased Professional and Technical Services	\$69,131.72	(\$54,507.87)	\$162,402.85	\$177,026.70
600 Supplies				
610 General Supplies	609.93	49.12		659.05
Total Supplies	\$609.93	\$49.12		\$659.05
Total 1220 Sensory Support	\$86,875.83	(\$37,324.82)	\$162,402.85	\$211,953.86

LEA : 111312503 Huntingdon Area SD

Printed 10/26/2022 9:23:35 AM

General Fund (10)

1230 Emotional Support

	<u>Elementary</u>	<u>Secondary</u>	<u>Federal</u>	<u>Total</u>
100 <u>Personnel Services – Salaries</u>				
100 Personnel Services – Salaries	317,591.08	233,766.10		551,357.18
Total Personnel Services – Salaries	\$317,591.08	\$233,766.10		\$551,357.18
200 <u>Personnel Services – Employee Benefits</u>				
210 Group Insurance – Contracted Provider	120,304.82	93,813.21		214,118.03
220 Social Security Contributions	23,145.33	16,973.23		40,118.56
230 PSERS Retirement Contributions	109,464.99	80,603.70		190,068.69
250 Unemployment Compensation	1,216.71	969.68		2,186.39
260 Workers' Compensation	3,811.36	2,805.26		6,616.62
292 Health Savings Accounts	11,340.00	9,940.00		21,280.00
Total Personnel Services – Employee Benefits	\$269,283.21	\$205,105.08		\$474,388.29
300 <u>Purchased Professional and Technical Services</u>				
329 Professional Educational Services – Other	13,365.00	120,966.98	218,648.15	352,980.13
Total Purchased Professional and Technical Services	\$13,365.00	\$120,966.98	\$218,648.15	\$352,980.13
500 <u>Other Purchased Services</u>				
580 Travel	20.14			20.14
Total Other Purchased Services	\$20.14			\$20.14
600 <u>Supplies</u>				
610 General Supplies	640.88	630.73		1,271.61
640 Books and Periodicals	225.66	357.80		583.46
Total Supplies	\$866.54	\$988.53		\$1,855.07
Total 1230 Emotional Support	\$601,125.97	\$560,826.69	\$218,648.15	\$1,380,600.81

LEA : 111312503 Huntingdon Area SD

Printed 10/26/2022 9:23:35 AM

General Fund (10)

1240 Academic Support

	<u>Elementary</u>	<u>Secondary</u>	<u>Federal</u>	<u>Total</u>
100 <u>Personnel Services – Salaries</u>				
100 Personnel Services – Salaries	668,349.51	495,231.47		1,163,580.98
Total Personnel Services – Salaries	\$668,349.51	\$495,231.47		\$1,163,580.98
200 <u>Personnel Services – Employee Benefits</u>				
210 Group Insurance – Contracted Provider	172,780.52	98,736.13		271,516.65
220 Social Security Contributions	49,033.11	36,432.35		85,465.46
230 PSERS Retirement Contributions	230,300.15	170,239.72		400,539.87
250 Unemployment Compensation	1,817.07	992.28		2,809.35
260 Workers' Compensation	8,019.76	5,921.74		13,941.50
292 Health Savings Accounts	10,357.20	12,742.80		23,100.00
Total Personnel Services – Employee Benefits	\$472,307.81	\$325,065.02		\$797,372.83
500 <u>Other Purchased Services</u>				
580 Travel	650.00			650.00
Total Other Purchased Services	\$650.00			\$650.00
600 <u>Supplies</u>				
610 General Supplies	6,582.24	855.46		7,437.70
640 Books and Periodicals	10,787.12	3,469.80		14,256.92
Total Supplies	\$17,369.36	\$4,325.26		\$21,694.62
800 <u>Other Objects</u>				
810 Dues and Fees		310.00		310.00
Total Other Objects		\$310.00		\$310.00
Total 1240 Academic Support	\$1,158,676.68	\$824,931.75		\$1,983,608.43

LEA : 111312503 Huntingdon Area SD

Printed 10/26/2022 9:23:35 AM

General Fund (10)

1241 Learning Support – Public	Elementary	Secondary	Federal	Total
100 Personnel Services – Salaries				
100 Personnel Services – Salaries	610,514.00	389,627.57		1,000,141.57
Total Personnel Services – Salaries	\$610,514.00	\$389,627.57		\$1,000,141.57
200 Personnel Services – Employee Benefits				
210 Group Insurance – Contracted Provider	170,377.86	93,701.45		264,079.31
220 Social Security Contributions	44,643.55	28,452.23		73,095.78
230 PSERS Retirement Contributions	210,341.05	133,795.82		344,136.87
250 Unemployment Compensation	1,725.84	868.34		2,594.18
260 Workers' Compensation	7,325.66	4,654.58		11,980.24
292 Health Savings Accounts	10,080.00	12,180.00		22,260.00
Total Personnel Services – Employee Benefits	\$444,493.96	\$273,652.42		\$718,146.38
500 Other Purchased Services				
580 Travel	650.00			650.00
Total Other Purchased Services	\$650.00			\$650.00
600 Supplies				
610 General Supplies	6,462.46	805.46		7,267.92
640 Books and Periodicals	10,787.12	3,469.80		14,256.92
Total Supplies	\$17,249.58	\$4,275.26		\$21,524.84
Total 1241 Learning Support – Public	\$1,072,907.54	\$667,555.25		\$1,740,462.79

LEA : 111312503 Huntingdon Area SD

Printed 10/26/2022 9:23:35 AM

General Fund (10)				
1243 Gifted Support	<u>Elementary</u>	<u>Secondary</u>	<u>Federal</u>	<u>Total</u>
100 <u>Personnel Services – Salaries</u>				
100 Personnel Services – Salaries	57,835.51	105,603.90		163,439.41
Total Personnel Services – Salaries	\$57,835.51	\$105,603.90		\$163,439.41
200 <u>Personnel Services – Employee Benefits</u>				
210 Group Insurance – Contracted Provider	2,402.66	5,034.68		7,437.34
220 Social Security Contributions	4,389.56	7,980.12		12,369.68
230 PSERS Retirement Contributions	19,959.10	36,443.90		56,403.00
250 Unemployment Compensation	91.23	123.94		215.17
260 Workers' Compensation	694.10	1,267.16		1,961.26
292 Health Savings Accounts	277.20	562.80		840.00
Total Personnel Services – Employee Benefits	\$27,813.85	\$51,412.60		\$79,226.45
600 <u>Supplies</u>				
610 General Supplies	119.78	50.00		169.78
Total Supplies	\$119.78	\$50.00		\$169.78
800 <u>Other Objects</u>				
810 Dues and Fees		310.00		310.00
Total Other Objects		\$310.00		\$310.00
Total 1243 Gifted Support	\$85,769.14	\$157,376.50		\$243,145.64

LEA : 111312503 Huntingdon Area SD

Printed 10/26/2022 9:23:35 AM

General Fund (10)

1260 Physical Support	<u>Elementary</u>	<u>Secondary</u>	<u>Federal</u>	<u>Total</u>
100 <u>Personnel Services – Salaries</u>				
100 Personnel Services – Salaries	33,200.66	33,200.65		66,401.31
Total Personnel Services – Salaries	\$33,200.66	\$33,200.65		\$66,401.31
200 <u>Personnel Services – Employee Benefits</u>				
210 Group Insurance – Contracted Provider	10,505.15	8,704.39		19,209.54
220 Social Security Contributions	2,405.80	2,405.57		4,811.37
230 PSERS Retirement Contributions	11,457.66	11,457.41		22,915.07
250 Unemployment Compensation	50.00	49.99		99.99
260 Workers' Compensation	398.44	398.43		796.87
292 Health Savings Accounts	2,520.00	840.00		3,360.00
Total Personnel Services – Employee Benefits	\$27,337.05	\$23,855.79		\$51,192.84
Total 1260 Physical Support	\$60,537.71	\$57,056.44		\$117,594.15

LEA : 111312503 Huntingdon Area SD

Printed 10/26/2022 9:23:35 AM

General Fund (10)

1290 Special Programs - Other Support	Elementary	Secondary	Federal	Total
100 <u>Personnel Services – Salaries</u>				
100 Personnel Services – Salaries	32,045.20	30,780.00		62,825.20
Total Personnel Services – Salaries	\$32,045.20	\$30,780.00		\$62,825.20
200 <u>Personnel Services – Employee Benefits</u>				
220 Social Security Contributions	2,408.85	2,291.58		4,700.43
230 PSERS Retirement Contributions	15,929.88	8,186.67		24,116.55
250 Unemployment Compensation	57.54	53.04		110.58
260 Workers' Compensation	469.17	284.66		753.83
Total Personnel Services – Employee Benefits	\$18,865.44	\$10,815.95		\$29,681.39
300 <u>Purchased Professional and Technical Services</u>				
322 Professional Educational Services – Ius	48,754.99	227.10	13,721.26	62,703.35
329 Professional Educational Services – Other	4,292.44	1,008.00		5,300.44
330 Other Professional Services	1,890.00			1,890.00
Total Purchased Professional and Technical Services	\$54,937.43	\$1,235.10	\$13,721.26	\$69,893.79
500 <u>Other Purchased Services</u>				
510 Student Transportation Services	3,018.67	6,652.16		9,670.83
561 Tuition To Other School Districts Within the State		35,532.09		35,532.09
562 Tuition To Pennsylvania Charter Schools		713,396.59	393,986.29	1,107,382.88
567 Tuition To Approved Private Schools (APS) and PA Chartered Schools for the Deaf and Blind	67,575.52			67,575.52
568 Tuition To Private Residential Rehabilitative Institutions (PRRI) [In-State] and Detention Centers		3,778.10		3,778.10
580 Travel	1,887.59			1,887.59
594 IU Payment By Withholding for Institutionalized Children's Programs – Special Classes	338.59	338.59		677.18
Total Other Purchased Services	\$72,820.37	\$759,697.53	\$393,986.29	\$1,226,504.19
600 <u>Supplies</u>				
610 General Supplies			1,478.40	1,478.40
Total Supplies			\$1,478.40	\$1,478.40
Total 1290 Special Programs - Other Support	\$178,668.44	\$802,528.58	\$409,185.95	\$1,390,382.97

LEA : 111312503 Huntingdon Area SD

Printed 10/26/2022 9:23:35 AM

General Fund (10)

1300 Vocational Education

	<u>Elementary</u>	<u>Secondary</u>	<u>Federal</u>	<u>Total</u>
100 <u>Personnel Services – Salaries</u>				
100 Personnel Services – Salaries		219,849.77		219,849.77
Total Personnel Services – Salaries		\$219,849.77		\$219,849.77
200 <u>Personnel Services – Employee Benefits</u>				
210 Group Insurance – Contracted Provider		61,023.72		61,023.72
220 Social Security Contributions		15,963.21		15,963.21
230 PSERS Retirement Contributions		75,801.30		75,801.30
250 Unemployment Compensation		314.02		314.02
260 Workers' Compensation		2,638.43		2,638.43
292 Health Savings Accounts		1,680.00		1,680.00
Total Personnel Services – Employee Benefits		\$157,420.68		\$157,420.68
500 <u>Other Purchased Services</u>				
564 Tuition To Career and Technology Centers		593,124.00		593,124.00
Total Other Purchased Services		\$593,124.00		\$593,124.00
600 <u>Supplies</u>				
610 General Supplies		20,523.59		20,523.59
640 Books and Periodicals		3,107.00		3,107.00
Total Supplies		\$23,630.59		\$23,630.59
800 <u>Other Objects</u>				
810 Dues and Fees		697.50		697.50
Total Other Objects		\$697.50		\$697.50
Total 1300 Vocational Education		\$994,722.54		\$994,722.54

LEA : 111312503 Huntingdon Area SD

Printed 10/26/2022 9:23:35 AM

General Fund (10)

1400 Other Instructional Programs – Elementary / Secondary	<u>Elementary</u>	<u>Secondary</u>	<u>Federal</u>	<u>Total</u>
100 <u>Personnel Services – Salaries</u>				
100 Personnel Services – Salaries	729.00	36,543.19	357,071.00	394,343.19
Total Personnel Services – Salaries	\$729.00	\$36,543.19	\$357,071.00	\$394,343.19
200 <u>Personnel Services – Employee Benefits</u>				
210 Group Insurance – Contracted Provider		17,617.76		17,617.76
220 Social Security Contributions	52.76	2,520.06	26,771.16	29,343.98
230 PSERS Retirement Contributions	824.63	81,656.73	53,606.42	136,087.78
250 Unemployment Compensation		108.49	825.46	933.95
260 Workers' Compensation	8.75	438.62	4,284.83	4,732.20
292 Health Savings Accounts		864.86		864.86
Total Personnel Services – Employee Benefits	\$886.14	\$103,206.52	\$85,487.87	\$189,580.53
300 <u>Purchased Professional and Technical Services</u>				
322 Professional Educational Services – Ius		2,354.64		2,354.64
323 Professional Educational Services – Other Educational Agencies		4,440.00	103,426.70	107,866.70
Total Purchased Professional and Technical Services		\$6,794.64	\$103,426.70	\$110,221.34
500 <u>Other Purchased Services</u>				
561 Tuition To Other School Districts Within the State		3,330.00		3,330.00
Total Other Purchased Services		\$3,330.00		\$3,330.00
600 <u>Supplies</u>				
610 General Supplies		20.90		20.90
620 Energy		163.50		163.50
Total Supplies		\$184.40		\$184.40
Total 1400 Other Instructional Programs – Elementary / Secondary	\$1,615.14	\$150,058.75	\$545,985.57	\$697,659.46

LEA : 111312503 Huntingdon Area SD

Printed 10/26/2022 9:23:35 AM

General Fund (10)

1410 Drivers' Education

	<u>Elementary</u>	<u>Secondary</u>	<u>Federal</u>	<u>Total</u>
100 <u>Personnel Services – Salaries</u>				
100 Personnel Services – Salaries		958.50		958.50
Total Personnel Services – Salaries		\$958.50		\$958.50
200 <u>Personnel Services – Employee Benefits</u>				
220 Social Security Contributions		73.33		73.33
230 PSERS Retirement Contributions		330.78		330.78
250 Unemployment Compensation		9.59		9.59
260 Workers' Compensation		11.50		11.50
Total Personnel Services – Employee Benefits		\$425.20		\$425.20
600 <u>Supplies</u>				
610 General Supplies		20.90		20.90
620 Energy		163.50		163.50
Total Supplies		\$184.40		\$184.40
Total 1410 Drivers' Education		\$1,568.10		\$1,568.10

LEA : 111312503 Huntingdon Area SD

Printed 10/26/2022 9:23:35 AM

General Fund (10)

1430 Homebound Instruction	<u>Elementary</u>	<u>Secondary</u>	<u>Federal</u>	<u>Total</u>
100 <u>Personnel Services – Salaries</u>				
100 Personnel Services – Salaries	729.00	1,498.50		2,227.50
Total Personnel Services – Salaries	\$729.00	\$1,498.50		\$2,227.50
200 <u>Personnel Services – Employee Benefits</u>				
220 Social Security Contributions	52.76	111.41		164.17
230 PSERS Retirement Contributions	251.58	517.13		768.71
260 Workers’ Compensation	8.75	17.98		26.73
Total Personnel Services – Employee Benefits	\$313.09	\$646.52		\$959.61
Total 1430 Homebound Instruction	\$1,042.09	\$2,145.02		\$3,187.11

LEA : 111312503 Huntingdon Area SD

Printed 10/26/2022 9:23:35 AM

General Fund (10)

1440 Alternative Regular Education Programs	<u>Elementary</u>	<u>Secondary</u>	<u>Federal</u>	<u>Total</u>
100 <u>Personnel Services – Salaries</u>				
100 Personnel Services – Salaries		22,123.35		22,123.35
Total Personnel Services – Salaries		\$22,123.35		\$22,123.35
200 <u>Personnel Services – Employee Benefits</u>				
210 Group Insurance – Contracted Provider		17,617.76		17,617.76
220 Social Security Contributions		1,447.97		1,447.97
230 PSERS Retirement Contributions		7,634.67		7,634.67
250 Unemployment Compensation		98.90		98.90
260 Workers' Compensation		265.59		265.59
Total Personnel Services – Employee Benefits		\$27,064.89		\$27,064.89
300 <u>Purchased Professional and Technical Services</u>				
322 Professional Educational Services – Ius		2,354.64		2,354.64
323 Professional Educational Services – Other Educational Agencies		4,440.00	103,426.70	107,866.70
Total Purchased Professional and Technical Services		\$6,794.64	\$103,426.70	\$110,221.34
500 <u>Other Purchased Services</u>				
561 Tuition To Other School Districts Within the State		3,330.00		3,330.00
Total Other Purchased Services		\$3,330.00		\$3,330.00
Total 1440 Alternative Regular Education Programs		\$59,312.88	\$103,426.70	\$162,739.58

LEA : 111312503 Huntingdon Area SD

Printed 10/26/2022 9:23:35 AM

General Fund (10)

1441 Adjudicated / Court-Placed Programs	<u>Elementary</u>	<u>Secondary</u>	<u>Federal</u>	<u>Total</u>
100 <u>Personnel Services – Salaries</u>				
100 Personnel Services – Salaries		1,572.75		1,572.75
Total Personnel Services – Salaries		\$1,572.75		\$1,572.75
200 <u>Personnel Services – Employee Benefits</u>				
220 Social Security Contributions		114.92		114.92
230 PSERS Retirement Contributions		542.76		542.76
250 Unemployment Compensation		0.08		0.08
260 Workers' Compensation		18.86		18.86
Total Personnel Services – Employee Benefits		\$676.62		\$676.62
500 <u>Other Purchased Services</u>				
561 Tuition To Other School Districts Within the State		3,330.00		3,330.00
Total Other Purchased Services		\$3,330.00		\$3,330.00
Total 1441 Adjudicated / Court-Placed Programs		\$5,579.37		\$5,579.37

LEA : 111312503 Huntingdon Area SD

Printed 10/26/2022 9:23:35 AM

General Fund (10)

1442 Alternative Education Programs	<u>Elementary</u>	<u>Secondary</u>	<u>Federal</u>	<u>Total</u>
100 <u>Personnel Services – Salaries</u>				
100 Personnel Services – Salaries		20,550.60		20,550.60
Total Personnel Services – Salaries		\$20,550.60		\$20,550.60
200 <u>Personnel Services – Employee Benefits</u>				
210 Group Insurance – Contracted Provider		17,617.76		17,617.76
220 Social Security Contributions		1,333.05		1,333.05
230 PSERS Retirement Contributions		7,091.91		7,091.91
250 Unemployment Compensation		98.82		98.82
260 Workers' Compensation		246.73		246.73
Total Personnel Services – Employee Benefits		\$26,388.27		\$26,388.27
300 <u>Purchased Professional and Technical Services</u>				
322 Professional Educational Services – lus		2,354.64		2,354.64
323 Professional Educational Services – Other Educational Agencies		4,440.00	103,426.70	107,866.70
Total Purchased Professional and Technical Services		\$6,794.64	\$103,426.70	\$110,221.34
Total 1442 Alternative Education Programs		\$53,733.51	\$103,426.70	\$157,160.21

LEA : 111312503 Huntingdon Area SD

Printed 10/26/2022 9:23:35 AM

General Fund (10)

1450 Instructional Programs Outside the Established School Day	<u>Elementary</u>	<u>Secondary</u>	<u>Federal</u>	<u>Total</u>
100 <u>Personnel Services – Salaries</u>				
100 Personnel Services – Salaries		2,727.00	3,321.00	6,048.00
Total Personnel Services – Salaries		\$2,727.00	\$3,321.00	\$6,048.00
200 <u>Personnel Services – Employee Benefits</u>				
220 Social Security Contributions		205.24	244.21	449.45
230 PSERS Retirement Contributions	573.05	8,512.46	(6,998.33)	2,087.18
250 Unemployment Compensation			23.50	23.50
260 Workers' Compensation		32.72	39.83	72.55
Total Personnel Services – Employee Benefits	\$573.05	\$8,750.42	(\$6,690.79)	\$2,632.68
Total 1450 Instructional Programs Outside the Established School Day	\$573.05	\$11,477.42	(\$3,369.79)	\$8,680.68

LEA : 111312503 Huntingdon Area SD

Printed 10/26/2022 9:23:35 AM

General Fund (10)

1490 Additional Other Instructional Programs	<u>Elementary</u>	<u>Secondary</u>	<u>Federal</u>	<u>Total</u>
100 <u>Personnel Services – Salaries</u>				
100 Personnel Services – Salaries		9,235.84	353,750.00	362,985.84
Total Personnel Services – Salaries		\$9,235.84	\$353,750.00	\$362,985.84
200 <u>Personnel Services – Employee Benefits</u>				
220 Social Security Contributions		682.11	26,526.95	27,209.06
230 PSERS Retirement Contributions		64,661.69	60,604.75	125,266.44
250 Unemployment Compensation			801.96	801.96
260 Workers' Compensation		110.83	4,245.00	4,355.83
292 Health Savings Accounts		864.86		864.86
Total Personnel Services – Employee Benefits		\$66,319.49	\$92,178.66	\$158,498.15
Total 1490 Additional Other Instructional Programs		\$75,555.33	\$445,928.66	\$521,483.99

LEA : 111312503 Huntingdon Area SD

Printed 10/26/2022 9:23:35 AM

General Fund (10)				
1800 Pre-Kindergarten	<u>Elementary</u>	<u>Secondary</u>	<u>Federal</u>	<u>Total</u>
100 <u>Personnel Services – Salaries</u>				
100 Personnel Services – Salaries				74,394.09
Total Personnel Services – Salaries				\$74,394.09
200 <u>Personnel Services – Employee Benefits</u>				
210 Group Insurance – Contracted Provider				31,964.01
220 Social Security Contributions				5,519.20
230 PSERS Retirement Contributions				25,673.26
250 Unemployment Compensation				307.84
260 Workers' Compensation				892.71
292 Health Savings Accounts				3,360.00
Total Personnel Services – Employee Benefits				\$67,717.02
300 <u>Purchased Professional and Technical Services</u>				
329 Professional Educational Services – Other				4,949.14
Total Purchased Professional and Technical Services				\$4,949.14
400 <u>Purchased Property Services</u>				
440 Rentals				242.00
Total Purchased Property Services				\$242.00
500 <u>Other Purchased Services</u>				
549 Other Advertising/Public Relations				601.50
Total Other Purchased Services				\$601.50
600 <u>Supplies</u>				
610 General Supplies			624.46	33,271.56
630 Food				1,884.75
650 Supplies & Fees – Technology Related			4,734.00	5,983.00
Total Supplies			\$5,358.46	\$41,139.31
Total 1800 Pre-Kindergarten			\$5,358.46	\$189,043.06

LEA : 111312503 Huntingdon Area SD

Printed 10/26/2022 9:23:35 AM

General Fund (10)

1801 Pre-K Instruction

	<u>Elementary</u>	<u>Secondary</u>	<u>Federal</u>	<u>Total</u>
100 <u>Personnel Services – Salaries</u>				
100 Personnel Services – Salaries				74,394.09
Total Personnel Services – Salaries				\$74,394.09
200 <u>Personnel Services – Employee Benefits</u>				
210 Group Insurance – Contracted Provider				31,964.01
220 Social Security Contributions				5,519.20
230 PSERS Retirement Contributions				25,673.26
250 Unemployment Compensation				307.84
260 Workers' Compensation				892.71
292 Health Savings Accounts				3,360.00
Total Personnel Services – Employee Benefits				\$67,717.02
300 <u>Purchased Professional and Technical Services</u>				
329 Professional Educational Services – Other				4,949.14
Total Purchased Professional and Technical Services				\$4,949.14
500 <u>Other Purchased Services</u>				
549 Other Advertising/Public Relations				601.50
Total Other Purchased Services				\$601.50
600 <u>Supplies</u>				
610 General Supplies			624.46	33,271.56
650 Supplies & Fees – Technology Related			4,734.00	5,983.00
Total Supplies			\$5,358.46	\$39,254.56
Total 1801 Pre-K Instruction			\$5,358.46	\$186,916.31

Total

242.00

\$242.00

\$242.00

LEA : 111312503 Huntingdon Area SD

Printed 10/26/2022 9:23:35 AM

General Fund (10)				
1805 Pre-K Food Services	<u>Elementary</u>	<u>Secondary</u>	<u>Federal</u>	<u>Total</u>
600 <u>Supplies</u>				
630 Food				1,884.75
Total Supplies				\$1,884.75
Total 1805 Pre-K Food Services				\$1,884.75

LEA : 111312503 Huntingdon Area SD

Printed 10/26/2022 9:23:39 AM

General Fund (10)

2000 Support Services

Total

100	<u>Personnel Services – Salaries</u>	
100	Personnel Services – Salaries	3,449,979.20
Total Personnel Services – Salaries		\$3,449,979.20
200	<u>Personnel Services – Employee Benefits</u>	
210	Group Insurance – Contracted Provider	688,011.79
220	Social Security Contributions	250,192.78
230	PSERS Retirement Contributions	1,128,708.69
240	Tuition Reimbursement	132,941.40
250	Unemployment Compensation	7,590.12
260	Workers' Compensation	40,677.16
292	Health Savings Accounts	69,020.00
Total Personnel Services – Employee Benefits		\$2,317,141.94
300	<u>Purchased Professional and Technical Services</u>	
322	Professional Educational Services – Ius	107,798.84
329	Professional Educational Services – Other	21,312.00
330	Other Professional Services	202,341.97
340	Technical Services	39.00
350	Security / Safety Services	34,500.00
360	Employee Training and Development Services	3,475.00
Total Purchased Professional and Technical Services		\$369,466.81
400	<u>Purchased Property Services</u>	
410	Cleaning Services	29,050.58
420	Utility Services	71,324.10
430	Repairs and Maintenance Services	108,595.99
440	Rentals	122,386.61
460	Extermination Services	4,713.60
Total Purchased Property Services		\$336,070.88
500	<u>Other Purchased Services</u>	
513	Contracted Carriers	2,135,731.64
516	Student Transportation Services From the IU	34,085.40
520	Insurance – General	14,508.00
522	Automotive Liability Insurance	4,046.00
523	General Property and Liability Insurance	88,748.00
530	Communications	43,392.33
549	Other Advertising/Public Relations	19,746.12
580	Travel	3,286.88
Total Other Purchased Services		\$2,343,544.37
600	<u>Supplies</u>	
610	General Supplies	313,861.72
620	Energy	389,327.70
640	Books and Periodicals	42,510.05
650	Supplies & Fees – Technology Related	413,329.67
Total Supplies		\$1,159,029.14

LEA : 111312503 Huntingdon Area SD

Printed 10/26/2022 9:23:39 AM

General Fund (10)

2000 Support Services

Total

700 <u>Property</u>	
762 Capitalized Equipment - Replacement	74,888.00
766 Capitalized Technology Equipment – Replacement	68,331.30
Total Property	\$143,219.30
800 <u>Other Objects</u>	
810 Dues and Fees	18,379.78
820 Claims and Judgments Against the LEA	24,500.00
890 Miscellaneous Expenditures	79,562.22
Total Other Objects	\$122,442.00
Total 2000 Support Services	\$10,240,893.64

LEA : 111312503 Huntingdon Area SD

Printed 10/26/2022 9:23:39 AM

General Fund (10)				
2100 Support Services – Students	<u>Elementary</u>	<u>Secondary</u>	<u>Federal</u>	<u>Total</u>
100 <u>Personnel Services – Salaries</u>				
100 Personnel Services – Salaries	208,116.65	275,914.02		484,030.67
Total Personnel Services – Salaries	\$208,116.65	\$275,914.02		\$484,030.67
200 <u>Personnel Services – Employee Benefits</u>				
210 Group Insurance – Contracted Provider	48,303.71	35,713.39		84,017.10
220 Social Security Contributions	15,236.73	20,643.82		35,880.55
230 PSERS Retirement Contributions	71,641.77	95,183.31		166,825.08
250 Unemployment Compensation	400.03	486.08		886.11
260 Workers' Compensation	2,494.87	3,310.88		5,805.75
292 Health Savings Accounts	4,620.00	3,780.00		8,400.00
Total Personnel Services – Employee Benefits	\$142,697.11	\$159,117.48		\$301,814.59
300 <u>Purchased Professional and Technical Services</u>				
322 Professional Educational Services – Ius				106,748.84
329 Professional Educational Services – Other	3,750.00	9,612.00	7,950.00	21,312.00
330 Other Professional Services	921.25			921.25
Total Purchased Professional and Technical Services	\$4,671.25	\$9,612.00	\$7,950.00	\$128,982.09
600 <u>Supplies</u>				
610 General Supplies	1,739.65	3,153.92		4,893.57
640 Books and Periodicals	550.49	1,615.00		2,165.49
650 Supplies & Fees – Technology Related	5,004.00	5,004.00		10,008.00
Total Supplies	\$7,294.14	\$9,772.92		\$17,067.06
800 <u>Other Objects</u>				
810 Dues and Fees				230.00
Total Other Objects				\$230.00
Total 2100 Support Services – Students	\$362,779.15	\$454,416.42	\$7,950.00	\$932,124.41

LEA : 111312503 Huntingdon Area SD

Printed 10/26/2022 9:23:39 AM

General Fund (10)

2110 Supervision of Student Services	<u>Elementary</u>	<u>Secondary</u>	<u>Federal</u>	<u>Total</u>
100 <u>Personnel Services – Salaries</u>				
100 Personnel Services – Salaries	31,440.88			31,440.88
Total Personnel Services – Salaries	\$31,440.88			\$31,440.88
200 <u>Personnel Services – Employee Benefits</u>				
210 Group Insurance – Contracted Provider	7,096.01	308.37		7,404.38
220 Social Security Contributions	2,260.62			2,260.62
230 PSERS Retirement Contributions	10,774.40			10,774.40
250 Unemployment Compensation	100.02			100.02
260 Workers' Compensation	374.66			374.66
292 Health Savings Accounts	840.00			840.00
Total Personnel Services – Employee Benefits	\$21,445.71	\$308.37		\$21,754.08
600 <u>Supplies</u>				
610 General Supplies	132.24	132.24		264.48
650 Supplies & Fees – Technology Related	5,004.00	5,004.00		10,008.00
Total Supplies	\$5,136.24	\$5,136.24		\$10,272.48
Total 2110 Supervision of Student Services	\$58,022.83	\$5,444.61		\$63,467.44

LEA : 111312503 Huntingdon Area SD

Printed 10/26/2022 9:23:39 AM

General Fund (10)

2111 Supervision of Student Services – Head of Component	<u>Elementary</u>	<u>Secondary</u>	<u>Federal</u>	<u>Total</u>
100 <u>Personnel Services – Salaries</u>				
100 Personnel Services – Salaries	31,440.88			31,440.88
Total Personnel Services – Salaries	\$31,440.88			\$31,440.88
200 <u>Personnel Services – Employee Benefits</u>				
210 Group Insurance – Contracted Provider	7,096.01	308.37		7,404.38
220 Social Security Contributions	2,260.62			2,260.62
230 PSERS Retirement Contributions	10,774.40			10,774.40
250 Unemployment Compensation	100.02			100.02
260 Workers' Compensation	374.66			374.66
292 Health Savings Accounts	840.00			840.00
Total Personnel Services – Employee Benefits	\$21,445.71	\$308.37		\$21,754.08
600 <u>Supplies</u>				
610 General Supplies	132.24	132.24		264.48
650 Supplies & Fees – Technology Related	5,004.00	5,004.00		10,008.00
Total Supplies	\$5,136.24	\$5,136.24		\$10,272.48
Total 2111 Supervision of Student Services – Head of Component	\$58,022.83	\$5,444.61		\$63,467.44

LEA : 111312503 Huntingdon Area SD

Printed 10/26/2022 9:23:39 AM

General Fund (10)

2120 Guidance Services	Elementary	Secondary	Federal	Total
100 Personnel Services – Salaries				
100 Personnel Services – Salaries	110,380.65	209,618.90		319,999.55
Total Personnel Services – Salaries	\$110,380.65	\$209,618.90		\$319,999.55
200 Personnel Services – Employee Benefits				
210 Group Insurance – Contracted Provider	26,615.80	20,813.12		47,428.92
220 Social Security Contributions	8,049.96	15,717.89		23,767.85
230 PSERS Retirement Contributions	38,023.29	72,339.46		110,362.75
250 Unemployment Compensation	199.99	386.07		586.06
260 Workers' Compensation	1,324.66	2,515.34		3,840.00
292 Health Savings Accounts	2,520.00	2,520.00		5,040.00
Total Personnel Services – Employee Benefits	\$76,733.70	\$114,291.88		\$191,025.58
300 Purchased Professional and Technical Services				
329 Professional Educational Services – Other		9,612.00	7,950.00	17,562.00
330 Other Professional Services	921.25			921.25
Total Purchased Professional and Technical Services	\$921.25	\$9,612.00	\$7,950.00	\$18,483.25
600 Supplies				
610 General Supplies	399.94	455.80		855.74
640 Books and Periodicals	550.49	1,615.00		2,165.49
Total Supplies	\$950.43	\$2,070.80		\$3,021.23
Total 2120 Guidance Services	\$188,986.03	\$335,593.58	\$7,950.00	\$532,529.61

LEA : 111312503 Huntingdon Area SD

Printed 10/26/2022 9:23:39 AM

General Fund (10)				
2140 Psychological Services				
	<u>Elementary</u>	<u>Secondary</u>	<u>Federal</u>	<u>Total</u>
100 <u>Personnel Services – Salaries</u>				
100 Personnel Services – Salaries	66,295.12	66,295.12		132,590.24
Total Personnel Services – Salaries	\$66,295.12	\$66,295.12		\$132,590.24
200 <u>Personnel Services – Employee Benefits</u>				
210 Group Insurance – Contracted Provider	14,591.90	14,591.90		29,183.80
220 Social Security Contributions	4,926.15	4,925.93		9,852.08
230 PSERS Retirement Contributions	22,844.08	22,843.85		45,687.93
250 Unemployment Compensation	100.02	100.01		200.03
260 Workers' Compensation	795.55	795.54		1,591.09
292 Health Savings Accounts	1,260.00	1,260.00		2,520.00
Total Personnel Services – Employee Benefits	\$44,517.70	\$44,517.23		\$89,034.93
300 <u>Purchased Professional and Technical Services</u>				
329 Professional Educational Services – Other	3,750.00			3,750.00
Total Purchased Professional and Technical Services	\$3,750.00			\$3,750.00
600 <u>Supplies</u>				
610 General Supplies	1,207.47	2,565.88		3,773.35
Total Supplies	\$1,207.47	\$2,565.88		\$3,773.35
Total 2140 Psychological Services	\$115,770.29	\$113,378.23		\$229,148.52

LEA : 111312503 Huntingdon Area SD

Printed 10/26/2022 9:23:39 AM

General Fund (10)				
2160 Social Work Services	<u>Elementary</u>	<u>Secondary</u>	<u>Federal</u>	<u>Total</u>
300 <u>Purchased Professional and Technical Services</u>				
322 Professional Educational Services – lus				106,748.84
Total Purchased Professional and Technical Services				\$106,748.84
Total 2160 Social Work Services				\$106,748.84

LEA : 111312503 Huntingdon Area SD

Printed 10/26/2022 9:23:39 AM

General Fund (10)				
2170 Student Accounting Services	<u>Elementary</u>	<u>Secondary</u>	<u>Federal</u>	<u>Total</u>
800 <u>Other Objects</u>				
810 Dues and Fees				230.00
Total Other Objects				\$230.00
Total 2170 Student Accounting Services				\$230.00

LEA : 111312503 Huntingdon Area SD

Printed 10/26/2022 9:23:39 AM

General Fund (10)

2200 Support Services – Instructional Staff	<u>Elementary</u>	<u>Secondary</u>	<u>Federal</u>	<u>Total</u>
100 <u>Personnel Services – Salaries</u>				
100 Personnel Services – Salaries	336,971.22	274,313.68	286.70	611,571.60
Total Personnel Services – Salaries	\$336,971.22	\$274,313.68	\$286.70	\$611,571.60
200 <u>Personnel Services – Employee Benefits</u>				
210 Group Insurance – Contracted Provider	82,477.05	67,026.38		149,503.43
220 Social Security Contributions	25,100.42	18,731.39	21.93	43,853.74
230 PSERS Retirement Contributions	112,767.05	86,963.19	49.47	199,779.71
240 Tuition Reimbursement	83,456.23	40,665.17		124,121.40
250 Unemployment Compensation	604.71	473.68		1,078.39
260 Workers' Compensation	4,101.78	3,069.79	3.44	7,175.01
292 Health Savings Accounts	8,400.00	6,720.00		15,120.00
Total Personnel Services – Employee Benefits	\$316,907.24	\$223,649.60	\$74.84	\$540,631.68
300 <u>Purchased Professional and Technical Services</u>				
360 Employee Training and Development Services	1,600.00	1,600.00		3,200.00
Total Purchased Professional and Technical Services	\$1,600.00	\$1,600.00		\$3,200.00
400 <u>Purchased Property Services</u>				
430 Repairs and Maintenance Services	698.25	1,460.88		2,159.13
440 Rentals			110,821.96	110,821.96
Total Purchased Property Services	\$698.25	\$1,460.88	\$110,821.96	\$112,981.09
500 <u>Other Purchased Services</u>				
580 Travel	117.36	41.76		159.12
Total Other Purchased Services	\$117.36	\$41.76		\$159.12
600 <u>Supplies</u>				
610 General Supplies	1,627.40	2,066.54		3,693.94
640 Books and Periodicals	14,048.49	9,844.62	16,451.45	40,344.56
650 Supplies & Fees – Technology Related	65,836.34	97,774.68	174,377.32	337,988.34
Total Supplies	\$81,512.23	\$109,685.84	\$190,828.77	\$382,026.84
700 <u>Property</u>				
766 Capitalized Technology Equipment – Replacement	34,165.65	34,165.65		68,331.30
Total Property	\$34,165.65	\$34,165.65		\$68,331.30
Total 2200 Support Services – Instructional Staff	\$771,971.95	\$644,917.41	\$302,012.27	\$1,718,901.63

LEA : 111312503 Huntingdon Area SD

Printed 10/26/2022 9:23:39 AM

General Fund (10)

2220 Technology Support Services	Elementary	Secondary	Federal	Total
100 <u>Personnel Services – Salaries</u>				
100 Personnel Services – Salaries	76,367.80	84,955.61	286.70	161,610.11
Total Personnel Services – Salaries	\$76,367.80	\$84,955.61	\$286.70	\$161,610.11
200 <u>Personnel Services – Employee Benefits</u>				
210 Group Insurance – Contracted Provider	14,700.87	14,700.62		29,401.49
220 Social Security Contributions	5,915.64	5,936.46	21.93	11,874.03
230 PSERS Retirement Contributions	26,146.05	26,194.99	49.47	52,390.51
250 Unemployment Compensation	180.97	180.63		361.60
260 Workers' Compensation	953.93	956.90	3.44	1,914.27
292 Health Savings Accounts	1,260.00	1,260.00		2,520.00
Total Personnel Services – Employee Benefits	\$49,157.46	\$49,229.60	\$74.84	\$98,461.90
400 <u>Purchased Property Services</u>				
430 Repairs and Maintenance Services	698.25	1,460.88		2,159.13
440 Rentals			110,821.96	110,821.96
Total Purchased Property Services	\$698.25	\$1,460.88	\$110,821.96	\$112,981.09
500 <u>Other Purchased Services</u>				
580 Travel	117.36	41.76		159.12
Total Other Purchased Services	\$117.36	\$41.76		\$159.12
600 <u>Supplies</u>				
610 General Supplies	121.90	121.90		243.80
650 Supplies & Fees – Technology Related	65,376.34	93,574.92	171,477.32	330,428.58
Total Supplies	\$65,498.24	\$93,696.82	\$171,477.32	\$330,672.38
700 <u>Property</u>				
766 Capitalized Technology Equipment – Replacement	34,165.65	34,165.65		68,331.30
Total Property	\$34,165.65	\$34,165.65		\$68,331.30
Total 2220 Technology Support Services	\$226,004.76	\$263,550.32	\$282,660.82	\$772,215.90

LEA : 111312503 Huntingdon Area SD

Printed 10/26/2022 9:23:39 AM

General Fund (10)

2250 School Library Services	Elementary	Secondary	Federal	Total
100 Personnel Services – Salaries				
100 Personnel Services – Salaries	107,915.75	54,495.88		162,411.63
Total Personnel Services – Salaries	\$107,915.75	\$54,495.88		\$162,411.63
200 Personnel Services – Employee Benefits				
210 Group Insurance – Contracted Provider	39,903.42	24,453.02		64,356.44
220 Social Security Contributions	7,799.60	3,853.38		11,652.98
230 PSERS Retirement Contributions	37,241.60	18,806.53		56,048.13
250 Unemployment Compensation	297.64	179.02		476.66
260 Workers' Compensation	1,294.81	653.88		1,948.69
292 Health Savings Accounts	3,360.00	1,680.00		5,040.00
Total Personnel Services – Employee Benefits	\$89,897.07	\$49,625.83		\$139,522.90
600 Supplies				
610 General Supplies	1,505.50	1,944.64		3,450.14
640 Books and Periodicals	1,299.00	2,286.96		3,585.96
650 Supplies & Fees – Technology Related	460.00	4,199.76		4,659.76
Total Supplies	\$3,264.50	\$8,431.36		\$11,695.86
Total 2250 School Library Services	\$201,077.32	\$112,553.07		\$313,630.39

LEA : 111312503 Huntingdon Area SD

Printed 10/26/2022 9:23:39 AM

General Fund (10)

2260 Instruction and Curriculum Development Services

	<u>Elementary</u>	<u>Secondary</u>	<u>Federal</u>	<u>Total</u>
100 <u>Personnel Services – Salaries</u>				
100 Personnel Services – Salaries	117,048.67	122,977.19		240,025.86
Total Personnel Services – Salaries	\$117,048.67	\$122,977.19		\$240,025.86
200 <u>Personnel Services – Employee Benefits</u>				
210 Group Insurance – Contracted Provider	27,872.76	27,872.74		55,745.50
220 Social Security Contributions	8,745.50	8,065.48		16,810.98
230 PSERS Retirement Contributions	37,081.18	37,860.16		74,941.34
250 Unemployment Compensation	100.02	105.13		205.15
260 Workers' Compensation	1,425.36	1,316.39		2,741.75
292 Health Savings Accounts	3,780.00	3,780.00		7,560.00
Total Personnel Services – Employee Benefits	\$79,004.82	\$78,999.90		\$158,004.72
600 <u>Supplies</u>				
640 Books and Periodicals	12,749.49	7,557.66	16,451.45	36,758.60
650 Supplies & Fees – Technology Related			2,900.00	2,900.00
Total Supplies	\$12,749.49	\$7,557.66	\$19,351.45	\$39,658.60
Total 2260 Instruction and Curriculum Development Services	\$208,802.98	\$209,534.75	\$19,351.45	\$437,689.18

LEA : 111312503 Huntingdon Area SD

Printed 10/26/2022 9:23:39 AM

General Fund (10)

2270 Instructional Staff Professional Development Services	<u>Elementary</u>	<u>Secondary</u>	<u>Federal</u>	<u>Total</u>
100 <u>Personnel Services – Salaries</u>				
100 Personnel Services – Salaries	35,639.00	11,885.00		47,524.00
Total Personnel Services – Salaries	\$35,639.00	\$11,885.00		\$47,524.00
200 <u>Personnel Services – Employee Benefits</u>				
220 Social Security Contributions	2,639.68	876.07		3,515.75
230 PSERS Retirement Contributions	12,298.22	4,101.51		16,399.73
240 Tuition Reimbursement	83,456.23	40,665.17		124,121.40
250 Unemployment Compensation	26.08	8.90		34.98
260 Workers' Compensation	427.68	142.62		570.30
Total Personnel Services – Employee Benefits	\$98,847.89	\$45,794.27		\$144,642.16
300 <u>Purchased Professional and Technical Services</u>				
360 Employee Training and Development Services	1,600.00	1,600.00		3,200.00
Total Purchased Professional and Technical Services	\$1,600.00	\$1,600.00		\$3,200.00
Total 2270 Instructional Staff Professional Development Services	\$136,086.89	\$59,279.27		\$195,366.16

LEA : 111312503 Huntingdon Area SD

Printed 10/26/2022 9:23:39 AM

General Fund (10)

2300 Support Services – Administration	Elementary	Secondary	Federal	Total
100 <u>Personnel Services – Salaries</u>				
100 Personnel Services – Salaries	352,004.64	599,058.21		1,192,508.22
Total Personnel Services – Salaries	\$352,004.64	\$599,058.21		\$1,192,508.22
200 <u>Personnel Services – Employee Benefits</u>				
210 Group Insurance – Contracted Provider	43,833.12	72,375.70		130,916.50
220 Social Security Contributions	25,480.59	43,230.59		86,154.89
230 PSERS Retirement Contributions	110,433.62	199,047.97		367,267.01
250 Unemployment Compensation	817.36	1,220.24		2,257.91
260 Workers' Compensation	4,090.28	6,921.77		13,793.29
292 Health Savings Accounts	3,986.13	6,860.00		12,526.13
Total Personnel Services – Employee Benefits	\$188,641.10	\$329,656.27		\$612,915.73
300 <u>Purchased Professional and Technical Services</u>				
322 Professional Educational Services – Ius			1,050.00	1,050.00
330 Other Professional Services	1,825.00	2,125.00		153,006.32
Total Purchased Professional and Technical Services	\$1,825.00	\$2,125.00	\$1,050.00	\$154,056.32
400 <u>Purchased Property Services</u>				
440 Rentals	108.00	2,646.90		2,754.90
Total Purchased Property Services	\$108.00	\$2,646.90		\$2,754.90
500 <u>Other Purchased Services</u>				
520 Insurance – General				14,508.00
530 Communications	2,268.93	5,079.45		7,348.38
549 Other Advertising/Public Relations				19,746.12
580 Travel		270.00		1,394.00
Total Other Purchased Services	\$2,268.93	\$5,349.45		\$42,996.50
600 <u>Supplies</u>				
610 General Supplies	11,474.18	9,501.30		47,935.57
650 Supplies & Fees – Technology Related	3,866.00	4,065.50		31,216.53
Total Supplies	\$15,340.18	\$13,566.80		\$79,152.10
800 <u>Other Objects</u>				
810 Dues and Fees				4,425.00
820 Claims and Judgments Against the LEA				24,500.00
Total Other Objects				\$28,925.00
Total 2300 Support Services – Administration	\$560,187.85	\$952,402.63	\$1,050.00	\$2,113,308.77

LEA : 111312503 Huntingdon Area SD

Printed 10/26/2022 9:23:39 AM

General Fund (10)

2310 Board Services

Elementary Secondary Federal Total

300	<u>Purchased Professional and Technical Services</u>			
330	Other Professional Services			333.34
Total Purchased Professional and Technical Services				\$333.34
500	<u>Other Purchased Services</u>			
520	Insurance – General			13,627.00
549	Other Advertising/Public Relations			19,746.12
Total Other Purchased Services				\$33,373.12
600	<u>Supplies</u>			
610	General Supplies			247.46
650	Supplies & Fees – Technology Related			12,650.09
Total Supplies				\$12,897.55
800	<u>Other Objects</u>			
810	Dues and Fees			3,500.00
820	Claims and Judgments Against the LEA			24,500.00
Total Other Objects				\$28,000.00
Total 2310 Board Services				\$74,604.01

LEA : 111312503 Huntingdon Area SD

Printed 10/26/2022 9:23:39 AM

General Fund (10)				
2320 Board Treasurer Services	<u>Elementary</u>	<u>Secondary</u>	<u>Federal</u>	<u>Total</u>
500 <u>Other Purchased Services</u>				
520 Insurance – General				881.00
Total Other Purchased Services				\$881.00
Total 2320 Board Treasurer Services				\$881.00

LEA : 111312503 Huntingdon Area SD

Printed 10/26/2022 9:23:39 AM

General Fund (10)

2330 Tax Assessment and Collection Services	<u>Elementary</u>	<u>Secondary</u>	<u>Federal</u>	<u>Total</u>
100 <u>Personnel Services – Salaries</u>				
100 Personnel Services – Salaries				45,288.34
Total Personnel Services – Salaries				\$45,288.34
200 <u>Personnel Services – Employee Benefits</u>				
220 Social Security Contributions				3,414.68
250 Unemployment Compensation				20.31
260 Workers’ Compensation				535.59
Total Personnel Services – Employee Benefits				\$3,970.58
300 <u>Purchased Professional and Technical Services</u>				
330 Other Professional Services				86,281.98
Total Purchased Professional and Technical Services				\$86,281.98
600 <u>Supplies</u>				
610 General Supplies				21,773.57
Total Supplies				\$21,773.57
Total 2330 Tax Assessment and Collection Services				\$157,314.47

LEA : 111312503 Huntingdon Area SD

Printed 10/26/2022 9:23:39 AM

General Fund (10)

2350 Legal and Accounting Services	<u>Elementary</u>	<u>Secondary</u>	<u>Federal</u>	<u>Total</u>
300 <u>Purchased Professional and Technical Services</u>				
330 Other Professional Services				62,441.00
Total Purchased Professional and Technical Services				\$62,441.00
Total 2350 Legal and Accounting Services				\$62,441.00

LEA : 111312503 Huntingdon Area SD

Printed 10/26/2022 9:23:39 AM

General Fund (10)

2360 Office of the Superintendent / Executive Director Services

Elementary Secondary Federal Total

100 <u>Personnel Services – Salaries</u>				
100 Personnel Services – Salaries				196,157.03
Total Personnel Services – Salaries				\$196,157.03
200 <u>Personnel Services – Employee Benefits</u>				
210 Group Insurance – Contracted Provider				14,707.68
220 Social Security Contributions				14,029.03
230 PSERS Retirement Contributions				57,785.42
250 Unemployment Compensation				200.00
260 Workers' Compensation				2,245.65
292 Health Savings Accounts				1,680.00
Total Personnel Services – Employee Benefits				\$90,647.78
500 <u>Other Purchased Services</u>				
580 Travel				1,124.00
Total Other Purchased Services				\$1,124.00
800 <u>Other Objects</u>				
810 Dues and Fees				925.00
Total Other Objects				\$925.00
Total 2360 Office of the Superintendent / Executive Director Services				\$288,853.81

LEA : 111312503 Huntingdon Area SD

Printed 10/26/2022 9:23:39 AM

General Fund (10)

2380 Office of the Principal Services	Elementary	Secondary	Federal	Total
100 <u>Personnel Services – Salaries</u>				
100 Personnel Services – Salaries	352,004.64	599,058.21		951,062.85
Total Personnel Services – Salaries	\$352,004.64	\$599,058.21		\$951,062.85
200 <u>Personnel Services – Employee Benefits</u>				
210 Group Insurance – Contracted Provider	43,833.12	72,375.70		116,208.82
220 Social Security Contributions	25,480.59	43,230.59		68,711.18
230 PSERS Retirement Contributions	110,433.62	199,047.97		309,481.59
250 Unemployment Compensation	817.36	1,220.24		2,037.60
260 Workers' Compensation	4,090.28	6,921.77		11,012.05
292 Health Savings Accounts	3,986.13	6,860.00		10,846.13
Total Personnel Services – Employee Benefits	\$188,641.10	\$329,656.27		\$518,297.37
300 <u>Purchased Professional and Technical Services</u>				
322 Professional Educational Services – Ius			1,050.00	1,050.00
330 Other Professional Services	1,825.00	2,125.00		3,950.00
Total Purchased Professional and Technical Services	\$1,825.00	\$2,125.00	\$1,050.00	\$5,000.00
400 <u>Purchased Property Services</u>				
440 Rentals	108.00	2,646.90		2,754.90
Total Purchased Property Services	\$108.00	\$2,646.90		\$2,754.90
500 <u>Other Purchased Services</u>				
530 Communications	2,268.93	5,079.45		7,348.38
580 Travel		270.00		270.00
Total Other Purchased Services	\$2,268.93	\$5,349.45		\$7,618.38
600 <u>Supplies</u>				
610 General Supplies	11,474.18	9,501.30		20,975.48
650 Supplies & Fees – Technology Related	3,866.00	4,065.50		7,931.50
Total Supplies	\$15,340.18	\$13,566.80		\$28,906.98
Total 2380 Office of the Principal Services	\$560,187.85	\$952,402.63	\$1,050.00	\$1,513,640.48

LEA : 111312503 Huntingdon Area SD

Printed 10/26/2022 9:23:39 AM

General Fund (10)				
2390 Other Administration Services	<u>Elementary</u>	<u>Secondary</u>	<u>Federal</u>	<u>Total</u>
600 <u>Supplies</u>				
610 General Supplies				4,939.06
650 Supplies & Fees – Technology Related				10,634.94
Total Supplies				\$15,574.00
Total 2390 Other Administration Services				\$15,574.00

LEA : 111312503 Huntingdon Area SD

Printed 10/26/2022 9:23:39 AM

General Fund (10)

2400 Support Services – Pupil Health	<u>Elementary</u>	<u>Secondary</u>	<u>Federal</u>	<u>Total</u>
100 <u>Personnel Services – Salaries</u>				
100 Personnel Services – Salaries				139,731.39
Total Personnel Services – Salaries				\$139,731.39
200 <u>Personnel Services – Employee Benefits</u>				
210 Group Insurance – Contracted Provider				68,044.47
220 Social Security Contributions				9,547.72
230 PSERS Retirement Contributions				47,325.30
250 Unemployment Compensation				570.24
260 Workers' Compensation				1,676.77
292 Health Savings Accounts				6,160.00
Total Personnel Services – Employee Benefits				\$133,324.50
300 <u>Purchased Professional and Technical Services</u>				
330 Other Professional Services				8,135.39
Total Purchased Professional and Technical Services				\$8,135.39
600 <u>Supplies</u>				
610 General Supplies			19,962.83	23,636.67
Total Supplies			\$19,962.83	\$23,636.67
Total 2400 Support Services – Pupil Health			\$19,962.83	\$304,827.95

LEA : 111312503 Huntingdon Area SD

Printed 10/26/2022 9:23:39 AM

General Fund (10)

2440 Nursing Services

	<u>Elementary</u>	<u>Secondary</u>	<u>Federal</u>	<u>Total</u>
100 <u>Personnel Services – Salaries</u>				
100 Personnel Services – Salaries				139,731.39
Total Personnel Services – Salaries				\$139,731.39
200 <u>Personnel Services – Employee Benefits</u>				
210 Group Insurance – Contracted Provider				68,044.47
220 Social Security Contributions				9,547.72
230 PSERS Retirement Contributions				47,325.30
250 Unemployment Compensation				570.24
260 Workers' Compensation				1,676.77
292 Health Savings Accounts				6,160.00
Total Personnel Services – Employee Benefits				\$133,324.50
300 <u>Purchased Professional and Technical Services</u>				
330 Other Professional Services				8,135.39
Total Purchased Professional and Technical Services				\$8,135.39
600 <u>Supplies</u>				
610 General Supplies			19,962.83	23,636.67
Total Supplies			\$19,962.83	\$23,636.67
Total 2440 Nursing Services			\$19,962.83	\$304,827.95

LEA : 111312503 Huntingdon Area SD

Printed 10/26/2022 9:23:39 AM

General Fund (10)				
2500 Support Services – Business	<u>Elementary</u>	<u>Secondary</u>	<u>Federal</u>	<u>Total</u>
100 <u>Personnel Services – Salaries</u>				
100 Personnel Services – Salaries				192,048.20
Total Personnel Services – Salaries				\$192,048.20
200 <u>Personnel Services – Employee Benefits</u>				
210 Group Insurance – Contracted Provider				43,952.34
220 Social Security Contributions				14,380.15
230 PSERS Retirement Contributions				65,866.75
250 Unemployment Compensation				417.15
260 Workers' Compensation				2,346.28
292 Health Savings Accounts				5,320.00
Total Personnel Services – Employee Benefits				\$132,282.67
300 <u>Purchased Professional and Technical Services</u>				
330 Other Professional Services				36,526.51
340 Technical Services				39.00
Total Purchased Professional and Technical Services				\$36,565.51
400 <u>Purchased Property Services</u>				
440 Rentals				3,659.38
Total Purchased Property Services				\$3,659.38
500 <u>Other Purchased Services</u>				
530 Communications				66.21
580 Travel				359.52
Total Other Purchased Services				\$425.73
600 <u>Supplies</u>				
610 General Supplies				6,714.35
650 Supplies & Fees – Technology Related				28,166.80
Total Supplies				\$34,881.15
800 <u>Other Objects</u>				
810 Dues and Fees				13,442.78
890 Miscellaneous Expenditures				127.22
Total Other Objects				\$13,570.00
Total 2500 Support Services – Business				\$413,432.64

LEA : 111312503 Huntingdon Area SD

Printed 10/26/2022 9:23:39 AM

General Fund (10)				
2590 Other Support Services – Business	<u>Elementary</u>	<u>Secondary</u>	<u>Federal</u>	<u>Total</u>
100 <u>Personnel Services – Salaries</u>				
100 Personnel Services – Salaries				192,048.20
Total Personnel Services – Salaries				\$192,048.20
200 <u>Personnel Services – Employee Benefits</u>				
210 Group Insurance – Contracted Provider				43,952.34
220 Social Security Contributions				14,380.15
230 PSERS Retirement Contributions				65,866.75
250 Unemployment Compensation				417.15
260 Workers' Compensation				2,346.28
292 Health Savings Accounts				5,320.00
Total Personnel Services – Employee Benefits				\$132,282.67
300 <u>Purchased Professional and Technical Services</u>				
330 Other Professional Services				36,526.51
340 Technical Services				39.00
Total Purchased Professional and Technical Services				\$36,565.51
400 <u>Purchased Property Services</u>				
440 Rentals				3,659.38
Total Purchased Property Services				\$3,659.38
500 <u>Other Purchased Services</u>				
530 Communications				66.21
580 Travel				359.52
Total Other Purchased Services				\$425.73
600 <u>Supplies</u>				
610 General Supplies				6,714.35
650 Supplies & Fees – Technology Related				28,166.80
Total Supplies				\$34,881.15
800 <u>Other Objects</u>				
810 Dues and Fees				13,442.78
890 Miscellaneous Expenditures				127.22
Total Other Objects				\$13,570.00
Total 2590 Other Support Services – Business				\$413,432.64

LEA : 111312503 Huntingdon Area SD

Printed 10/26/2022 9:23:39 AM

General Fund (10)				
2600 Operation and Maintenance of Plant Services	<u>Elementary</u>	<u>Secondary</u>	<u>Federal</u>	<u>Total</u>
100 <u>Personnel Services – Salaries</u>				
100 Personnel Services – Salaries				820,136.35
Total Personnel Services – Salaries				\$820,136.35
200 <u>Personnel Services – Employee Benefits</u>				
210 Group Insurance – Contracted Provider				211,577.95
220 Social Security Contributions				59,644.57
230 PSERS Retirement Contributions				278,210.25
250 Unemployment Compensation				2,367.58
260 Workers' Compensation				9,760.72
292 Health Savings Accounts				21,280.00
Total Personnel Services – Employee Benefits				\$582,841.07
300 <u>Purchased Professional and Technical Services</u>				
330 Other Professional Services				3,752.50
350 Security / Safety Services				34,500.00
Total Purchased Professional and Technical Services				\$38,252.50
400 <u>Purchased Property Services</u>				
410 Cleaning Services				29,050.58
420 Utility Services				71,324.10
430 Repairs and Maintenance Services				106,436.86
440 Rentals				1,855.47
460 Extermination Services				4,713.60
Total Purchased Property Services				\$213,380.61
500 <u>Other Purchased Services</u>				
522 Automotive Liability Insurance				4,046.00
523 General Property and Liability Insurance				88,748.00
530 Communications				35,977.74
580 Travel				1,124.24
Total Other Purchased Services				\$129,895.98
600 <u>Supplies</u>				
610 General Supplies	88,414.27	85,670.93	52,902.42	226,987.62
620 Energy				389,327.70
Total Supplies	\$88,414.27	\$85,670.93	\$52,902.42	\$616,315.32
700 <u>Property</u>				
762 Capitalized Equipment - Replacement				74,888.00
Total Property				\$74,888.00
800 <u>Other Objects</u>				
810 Dues and Fees				57.00
Total Other Objects				\$57.00
Total 2600 Operation and Maintenance of Plant Services	\$88,414.27	\$85,670.93	\$52,902.42	\$2,475,766.83

LEA : 111312503 Huntingdon Area SD

Printed 10/26/2022 9:23:39 AM

General Fund (10)				
2660 Safety and Security Services	<u>Elementary</u>	<u>Secondary</u>	<u>Federal</u>	<u>Total</u>
300 <u>Purchased Professional and Technical Services</u>				
350 Security / Safety Services				34,500.00
Total Purchased Professional and Technical Services				\$34,500.00
600 <u>Supplies</u>				
610 General Supplies	26,514.74	26,514.72		53,029.46
Total Supplies	\$26,514.74	\$26,514.72		\$53,029.46
Total 2660 Safety and Security Services	\$26,514.74	\$26,514.72		\$87,529.46

LEA : 111312503 Huntingdon Area SD

Printed 10/26/2022 9:23:39 AM

General Fund (10)				
2690 Other Operation and Maintenance of Plant Services	<u>Elementary</u>	<u>Secondary</u>	<u>Federal</u>	<u>Total</u>
100 <u>Personnel Services – Salaries</u>				
100 Personnel Services – Salaries				820,136.35
Total Personnel Services – Salaries				\$820,136.35
200 <u>Personnel Services – Employee Benefits</u>				
210 Group Insurance – Contracted Provider				211,577.95
220 Social Security Contributions				59,644.57
230 PSERS Retirement Contributions				278,210.25
250 Unemployment Compensation				2,367.58
260 Workers' Compensation				9,760.72
292 Health Savings Accounts				21,280.00
Total Personnel Services – Employee Benefits				\$582,841.07
300 <u>Purchased Professional and Technical Services</u>				
330 Other Professional Services				3,752.50
Total Purchased Professional and Technical Services				\$3,752.50
400 <u>Purchased Property Services</u>				
410 Cleaning Services				29,050.58
420 Utility Services				71,324.10
430 Repairs and Maintenance Services				106,436.86
440 Rentals				1,855.47
460 Extermination Services				4,713.60
Total Purchased Property Services				\$213,380.61
500 <u>Other Purchased Services</u>				
522 Automotive Liability Insurance				4,046.00
523 General Property and Liability Insurance				88,748.00
530 Communications				35,977.74
580 Travel				1,124.24
Total Other Purchased Services				\$129,895.98
600 <u>Supplies</u>				
610 General Supplies	61,899.53	59,156.21	52,902.42	173,958.16
620 Energy				389,327.70
Total Supplies	\$61,899.53	\$59,156.21	\$52,902.42	\$563,285.86
700 <u>Property</u>				
762 Capitalized Equipment - Replacement				74,888.00
Total Property				\$74,888.00
800 <u>Other Objects</u>				
810 Dues and Fees				57.00
Total Other Objects				\$57.00
Total 2690 Other Operation and Maintenance of Plant Services	\$61,899.53	\$59,156.21	\$52,902.42	\$2,388,237.37

LEA : 111312503 Huntingdon Area SD

Printed 10/26/2022 9:23:39 AM

General Fund (10)				
2700 Student Transportation Services	<u>Elementary</u>	<u>Secondary</u>	<u>Federal</u>	<u>Total</u>
400 <u>Purchased Property Services</u>				
440 Rentals				3,294.90
Total Purchased Property Services				\$3,294.90
500 <u>Other Purchased Services</u>				
513 Contracted Carriers				2,135,731.64
516 Student Transportation Services From the IU				34,085.40
Total Other Purchased Services				\$2,169,817.04
600 <u>Supplies</u>				
650 Supplies & Fees – Technology Related				5,950.00
Total Supplies				\$5,950.00
800 <u>Other Objects</u>				
890 Miscellaneous Expenditures				78,925.00
Total Other Objects				\$78,925.00
Total 2700 Student Transportation Services				\$2,257,986.94

LEA : 111312503 Huntingdon Area SD

Printed 10/26/2022 9:23:39 AM

General Fund (10)				
2750 Nonpublic Transportation	<u>Elementary</u>	<u>Secondary</u>	<u>Federal</u>	<u>Total</u>
800 <u>Other Objects</u>				
890 Miscellaneous Expenditures				78,925.00
Total Other Objects				\$78,925.00
Total 2750 Nonpublic Transportation				\$78,925.00

LEA : 111312503 Huntingdon Area SD

Printed 10/26/2022 9:23:39 AM

General Fund (10)				
2790 Other Student Transportation Services	<u>Elementary</u>	<u>Secondary</u>	<u>Federal</u>	<u>Total</u>
400 <u>Purchased Property Services</u>				
440 Rentals				3,294.90
Total Purchased Property Services				\$3,294.90
500 <u>Other Purchased Services</u>				
513 Contracted Carriers				2,135,731.64
516 Student Transportation Services From the IU				34,085.40
Total Other Purchased Services				\$2,169,817.04
600 <u>Supplies</u>				
650 Supplies & Fees – Technology Related				5,950.00
Total Supplies				\$5,950.00
Total 2790 Other Student Transportation Services				\$2,179,061.94

LEA : 111312503 Huntingdon Area SD

Printed 10/26/2022 9:23:39 AM

General Fund (10)					
2800 Support Services – Central		<u>Elementary</u>	<u>Secondary</u>	<u>Federal</u>	<u>Total</u>
100 <u>Personnel Services – Salaries</u>					
100 Personnel Services – Salaries				9,952.77	9,952.77
Total Personnel Services – Salaries				\$9,952.77	\$9,952.77
200 <u>Personnel Services – Employee Benefits</u>					
220 Social Security Contributions				731.16	731.16
230 PSERS Retirement Contributions				3,434.59	3,434.59
240 Tuition Reimbursement					8,820.00
250 Unemployment Compensation				12.74	12.74
260 Workers' Compensation				119.34	119.34
292 Health Savings Accounts				213.87	213.87
Total Personnel Services – Employee Benefits				\$4,511.70	\$13,331.70
300 <u>Purchased Professional and Technical Services</u>					
360 Employee Training and Development Services					275.00
Total Purchased Professional and Technical Services					\$275.00
500 <u>Other Purchased Services</u>					
580 Travel				250.00	250.00
Total Other Purchased Services				\$250.00	\$250.00
800 <u>Other Objects</u>					
810 Dues and Fees				225.00	225.00
890 Miscellaneous Expenditures					510.00
Total Other Objects				\$225.00	\$735.00
Total 2800 Support Services – Central				\$14,939.47	\$24,544.47

LEA : 111312503 Huntingdon Area SD

Printed 10/26/2022 9:23:39 AM

General Fund (10)

2830 Staff Services

Elementary Secondary Federal Total

200 <u>Personnel Services – Employee Benefits</u>				
240 Tuition Reimbursement				8,820.00
Total Personnel Services – Employee Benefits				\$8,820.00
300 <u>Purchased Professional and Technical Services</u>				
360 Employee Training and Development Services				275.00
Total Purchased Professional and Technical Services				\$275.00
800 <u>Other Objects</u>				
890 Miscellaneous Expenditures				510.00
Total Other Objects				\$510.00
Total 2830 Staff Services				\$9,605.00

LEA : 111312503 Huntingdon Area SD

Printed 10/26/2022 9:23:39 AM

General Fund (10)

2832 Recruitment and Placement Services

Elementary

Secondary

Federal

Total

800 Other Objects

890 Miscellaneous Expenditures

510.00

Total Other Objects				\$510.00
Total 2832 Recruitment and Placement Services				\$510.00

LEA : 111312503 Huntingdon Area SD

Printed 10/26/2022 9:23:39 AM

General Fund (10)

2834 Staff Development Services – Non-Instructional, Certified Staff Only	<u>Elementary</u>	<u>Secondary</u>	<u>Federal</u>	<u>Total</u>
200 <u>Personnel Services – Employee Benefits</u>				
240 Tuition Reimbursement				8,820.00
Total Personnel Services – Employee Benefits				\$8,820.00
Total 2834 Staff Development Services – Non-Instructional, Certified Staff Only				\$8,820.00

LEA : 111312503 Huntingdon Area SD

Printed 10/26/2022 9:23:39 AM

General Fund (10)

2836 Staff Development Services – Non-Instructional, Non-Certified Staff Only	<u>Elementary</u>	<u>Secondary</u>	<u>Federal</u>	<u>Total</u>
300 <u>Purchased Professional and Technical Services</u>				
360 Employee Training and Development Services				275.00
Total Purchased Professional and Technical Services				\$275.00
Total 2836 Staff Development Services – Non-Instructional, Non-Certified Staff Only				\$275.00

LEA : 111312503 Huntingdon Area SD

Printed 10/26/2022 9:23:39 AM

General Fund (10)

2850 State and Federal Agency Liaison Services	<u>Elementary</u>	<u>Secondary</u>	<u>Federal</u>	<u>Total</u>
100 <u>Personnel Services – Salaries</u>				
100 Personnel Services – Salaries			9,952.77	9,952.77
Total Personnel Services – Salaries			\$9,952.77	\$9,952.77
200 <u>Personnel Services – Employee Benefits</u>				
220 Social Security Contributions			731.16	731.16
230 PSERS Retirement Contributions			3,434.59	3,434.59
250 Unemployment Compensation			12.74	12.74
260 Workers' Compensation			119.34	119.34
292 Health Savings Accounts			213.87	213.87
Total Personnel Services – Employee Benefits			\$4,511.70	\$4,511.70
500 <u>Other Purchased Services</u>				
580 Travel			250.00	250.00
Total Other Purchased Services			\$250.00	\$250.00
800 <u>Other Objects</u>				
810 Dues and Fees			225.00	225.00
Total Other Objects			\$225.00	\$225.00
Total 2850 State and Federal Agency Liaison Services			\$14,939.47	\$14,939.47

LEA : 111312503 Huntingdon Area SD

Printed 10/26/2022 9:23:44 AM

General Fund (10)

3000 Operation of Non-Instructional Services		<u>Total</u>
100 <u>Personnel Services – Salaries</u>		
100 Personnel Services – Salaries	233,064.10	
Total Personnel Services – Salaries	\$233,064.10	
200 <u>Personnel Services – Employee Benefits</u>		
220 Social Security Contributions	2,883.29	
230 PSERS Retirement Contributions	13,257.05	
250 Unemployment Compensation	84,013.18	
260 Workers' Compensation	460.97	
Total Personnel Services – Employee Benefits	\$100,614.49	
300 <u>Purchased Professional and Technical Services</u>		
330 Other Professional Services	45,924.46	
Total Purchased Professional and Technical Services	\$45,924.46	
400 <u>Purchased Property Services</u>		
430 Repairs and Maintenance Services	16,043.95	
Total Purchased Property Services	\$16,043.95	
500 <u>Other Purchased Services</u>		
510 Student Transportation Services	33,061.42	
Total Other Purchased Services	\$33,061.42	
600 <u>Supplies</u>		
610 General Supplies	37,143.22	
Total Supplies	\$37,143.22	
800 <u>Other Objects</u>		
810 Dues and Fees	6,170.73	
Total Other Objects	\$6,170.73	
Total 3000 Operation of Non-Instructional Services	\$472,022.37	

LEA : 111312503 Huntingdon Area SD

Printed 10/26/2022 9:23:44 AM

General Fund (10)

3200 Student Activities

	<u>Elementary</u>	<u>Secondary</u>	<u>Federal</u>	<u>Total</u>
100 <u>Personnel Services – Salaries</u>				
100 Personnel Services – Salaries				233,064.10
Total Personnel Services – Salaries				\$233,064.10
200 <u>Personnel Services – Employee Benefits</u>				
220 Social Security Contributions				2,883.29
230 PSERS Retirement Contributions				13,257.05
250 Unemployment Compensation				84,013.18
260 Workers' Compensation				460.97
Total Personnel Services – Employee Benefits				\$100,614.49
300 <u>Purchased Professional and Technical Services</u>				
330 Other Professional Services				45,924.46
Total Purchased Professional and Technical Services				\$45,924.46
400 <u>Purchased Property Services</u>				
430 Repairs and Maintenance Services				16,043.95
Total Purchased Property Services				\$16,043.95
500 <u>Other Purchased Services</u>				
510 Student Transportation Services				33,061.42
Total Other Purchased Services				\$33,061.42
600 <u>Supplies</u>				
610 General Supplies				37,143.22
Total Supplies				\$37,143.22
800 <u>Other Objects</u>				
810 Dues and Fees				6,170.73
Total Other Objects				\$6,170.73
Total 3200 Student Activities				\$472,022.37

LEA : 111312503 Huntingdon Area SD

Printed 10/26/2022 9:23:49 AM

General Fund (10)

5000 Other Expenditures and Financing Uses

Total

800 <u>Other Objects</u>	
830 Interest	985,333.68
Total Other Objects	\$985,333.68
900 <u>Other Uses of Funds</u>	
910 Redemption of Principal	1,061,026.60
939 Other Fund Transfers	175,000.00
Total Other Uses of Funds	\$1,236,026.60
Total 5000 Other Expenditures and Financing Uses	\$2,221,360.28

LEA : 111312503 Huntingdon Area SD

Printed 10/26/2022 9:23:49 AM

General Fund (10)

5100 Debt Service / Other Expenditures and Financing Uses	<u>Elementary</u>	<u>Secondary</u>	<u>Federal</u>	<u>Total</u>
800 <u>Other Objects</u>				
830 Interest				985,333.68
Total Other Objects				\$985,333.68
900 <u>Other Uses of Funds</u>				
910 Redemption of Principal				1,061,026.60
Total Other Uses of Funds				\$1,061,026.60
Total 5100 Debt Service / Other Expenditures and Financing Uses				\$2,046,360.28

LEA : 111312503 Huntingdon Area SD

Printed 10/26/2022 9:23:49 AM

General Fund (10)				
5110 Debt Service	<u>Elementary</u>	<u>Secondary</u>	<u>Federal</u>	<u>Total</u>
800 <u>Other Objects</u>				
830 Interest				985,333.68
Total Other Objects				\$985,333.68
900 <u>Other Uses of Funds</u>				
910 Redemption of Principal				1,061,026.60
Total Other Uses of Funds				\$1,061,026.60
Total 5110 Debt Service				\$2,046,360.28

LEA : 111312503 Huntingdon Area SD

Printed 10/26/2022 9:23:49 AM

General Fund (10)

5200 Interfund Transfers – Out	<u>Elementary</u>	<u>Secondary</u>	<u>Federal</u>	<u>Total</u>
900 <u>Other Uses of Funds</u>				
939 Other Fund Transfers				175,000.00
Total Other Uses of Funds				\$175,000.00
Total 5200 Interfund Transfers – Out				\$175,000.00

LEA : 111312503 Huntingdon Area SD

Printed 10/26/2022 9:23:49 AM

General Fund (10)

5250 Enterprise Fund Transfers	<u>Elementary</u>	<u>Secondary</u>	<u>Federal</u>	<u>Total</u>
900 <u>Other Uses of Funds</u>				
939 Other Fund Transfers				175,000.00
Total Other Uses of Funds				\$175,000.00
Total 5250 Enterprise Fund Transfers				\$175,000.00

LEA : 111312503 Huntingdon Area SD

Printed 10/26/2022 9:23:46 AM

Other Capital Projects Fund (39)

4000 Facilities Acquisition, Construction and Improvement Services

Total

400 Purchased Property Services

450 Construction Services	3,660,553.70
Total Purchased Property Services	\$3,660,553.70
Total 4000 Facilities Acquisition, Construction and Improvement Services	\$3,660,553.70

LEA : 111312503 Huntingdon Area SD

Printed 10/26/2022 9:23:46 AM

Other Capital Projects Fund (39)

4600 Existing Building Improvement Services

Elementary

Secondary

Federal

Total

400 Purchased Property Services

450 Construction Services

3,660,553.70

Total Purchased Property Services				\$3,660,553.70
Total 4600 Existing Building Improvement Services				\$3,660,553.70

LEA : 111312503 Huntingdon Area SD

Printed 10/26/2022 9:23:51 AM

	<u>General Fund(10)</u>	<u>Student Sponsored Activity Fund(21)</u>	<u>Public Purpose Trust(27)</u>	<u>Other Compt Approved (28)</u>	<u>Athletic / Activity(29)</u>
1000 <u>Instruction</u>					
1100 Regular Programs - Elementary / Secondary	11,618,487.26				
1200 Special Programs - Elementary / Secondary	5,748,999.45				
1300 Vocational Education	994,722.54				
1400 Other Instructional Programs - Elementary / Secondary	697,659.46				
1800 Pre-Kindergarten	189,043.06				
Total Instruction	\$19,248,911.77				
2000 <u>Support Services</u>					
2100 Support Services - Students	932,124.41				
2200 Support Services - Instructional Staff	1,718,901.63				
2300 Support Services - Administration	2,113,308.77				
2400 Support Services - Pupil Health	304,827.95				
2500 Support Services - Business	413,432.64				
2600 Operation and Maintenance of Plant Services	2,475,766.83				
2700 Student Transportation Services	2,257,986.94				
2800 Support Services - Central	24,544.47				
Total Support Services	\$10,240,893.64				
3000 <u>Operation of Non-Instructional Services</u>					
3200 Student Activities	472,022.37				
Total Operation of Non-Instructional Services	\$472,022.37				
4000 <u>Facilities Acquisition, Construction and Improvement Services</u>					
4600 Existing Building Improvement Services					
Total Facilities Acquisition, Construction and Improvement Services					
5000 <u>Other Expenditures and Financing Uses</u>					
5100 Debt Service / Other Expenditures and Financing Uses	2,046,360.28				
5200 Interfund Transfers - Out	175,000.00				
Total Other Expenditures and Financing Uses	\$2,221,360.28				
TOTAL ACTUAL EXPENDITURES & OTHER FINANCING USES	\$32,183,188.06				

LEA : 111312503 Huntingdon Area SD

Printed 10/26/2022 9:23:51 AM

	<u>Capital Reserve (690. 1850)(31)</u>	<u>Capital Reserve (1431)(32)</u>	<u>Other Capital Projects Fund(39)</u>	<u>Debt Service(40)</u>	<u>Permanent(90)</u>
1000 <u>Instruction</u>					
1100 Regular Programs - Elementary / Secondary					
1200 Special Programs - Elementary / Secondary					
1300 Vocational Education					
1400 Other Instructional Programs - Elementary / Secondary					
1800 Pre-Kindergarten					
Total Instruction					
2000 <u>Support Services</u>					
2100 Support Services - Students					
2200 Support Services - Instructional Staff					
2300 Support Services - Administration					
2400 Support Services - Pupil Health					
2500 Support Services - Business					
2600 Operation and Maintenance of Plant Services					
2700 Student Transportation Services					
2800 Support Services - Central					
Total Support Services					
3000 <u>Operation of Non-Instructional Services</u>					
3200 Student Activities					
Total Operation of Non-Instructional Services					
4000 <u>Facilities Acquisition, Construction and Improvement Services</u>					
4600 Existing Building Improvement Services			3,660,553.70		
Total Facilities Acquisition, Construction and Improvement Services			\$3,660,553.70		
5000 <u>Other Expenditures and Financing Uses</u>					
5100 Debt Service / Other Expenditures and Financing Uses					
5200 Interfund Transfers - Out					
Total Other Expenditures and Financing Uses					
TOTAL ACTUAL EXPENDITURES & OTHER FINANCING USES			\$3,660,553.70		

LEA : 111312503 Huntingdon Area SD

Printed 10/26/2022 9:23:51 AM

	<u>Total</u>
1000 <u>Instruction</u>	
1100 Regular Programs - Elementary / Secondary	11,618,487.26
1200 Special Programs - Elementary / Secondary	5,748,999.45
1300 Vocational Education	994,722.54
1400 Other Instructional Programs - Elementary / Secondary	697,659.46
1800 Pre-Kindergarten	189,043.06
Total Instruction	\$19,248,911.77
2000 <u>Support Services</u>	
2100 Support Services - Students	932,124.41
2200 Support Services - Instructional Staff	1,718,901.63
2300 Support Services - Administration	2,113,308.77
2400 Support Services - Pupil Health	304,827.95
2500 Support Services - Business	413,432.64
2600 Operation and Maintenance of Plant Services	2,475,766.83
2700 Student Transportation Services	2,257,986.94
2800 Support Services - Central	24,544.47
Total Support Services	\$10,240,893.64
3000 <u>Operation of Non-Instructional Services</u>	
3200 Student Activities	472,022.37
Total Operation of Non-Instructional Services	\$472,022.37
4000 <u>Facilities Acquisition, Construction and Improvement Services</u>	
4600 Existing Building Improvement Services	3,660,553.70
Total Facilities Acquisition, Construction and Improvement Services	\$3,660,553.70
5000 <u>Other Expenditures and Financing Uses</u>	
5100 Debt Service / Other Expenditures and Financing Uses	2,046,360.28
5200 Interfund Transfers - Out	175,000.00
Total Other Expenditures and Financing Uses	\$2,221,360.28
TOTAL ACTUAL EXPENDITURES & OTHER FINANCING USES	\$35,843,741.76

LEA : 111312503 Huntingdon Area SD

Printed 10/26/2022 9:24:00 AM

PSERS Salary Data (Salary Data should relate to the General Fund only)

Amount	Description	Amount
	Total Salary Base for salaries subject to PSERS withholding	10,985,691.00
	Total Federally Funded salaries subject to PSERS withholding	1,142,232.00

Title I Expenditure Data

Amount	Description	Amount
	Expenditures Funded with Current Title I Funds	599,391.00
	Expenditures Funded with Carry over Title I Funds	8,365.00
Total	Title I Expenditure Data	\$607,756.00

Title IV Revenue Data

Amount	Description	Amount
	Revenue from Title IV-A-1: Student Support and Academic Enrichment Grants	42,272.81
	Revenue from Title IV-B: 21st Century Community Learning Centers	

Title V Revenue Data

Amount	Description	Amount
	Revenue from Title V-B-2: Rural and Low-Income School Programs	
	Revenue from Title V-B-1: Small Rural School Achievement (Directly from the Federal Govt)	

LEA : 111312503 Huntingdon Area SD

1 .	<u>Current Special Education Expenditures/Expenses within Functions 1000, 2000, 3100, and 3200</u>	6,657,190.62
2 .	<u>Current Special Education Expenditures for Instruction Functions 1000 and 3200</u>	6,215,564.82
3 .	<u>Current Special Education Expenditures for Pupil Support Services Function 2100</u>	63,467.44
4 .	<u>Current Special Education Expenditures for Instructional Staff Support Services Function 2200</u>	378,158.36
5 .	<u>Current Special Education Expenditures for Student Transportation Support Services Function 2700</u>	461,312.83

Note: The Current Special Education Expenditure amounts for each line should be calculated as follows:

- * Include the total expenditures for special education costs from all funds for the function/sub-function requested
- * Exclude data from sub-functions: 1243,1450,1500,1600,1807,2280,2450,2750,2990
- * Exclude data from objects: 322,511,512,516,561,562,564,566,592,593,594,595,596,597,700,830,899

Benefits for Staff Relative to Collective Bargaining Agreements

	OBJECT	COVERED	NOT COVERED	TOTAL
10 General Fund	No Self Insurance data to report			
	211 Medical Insurance	2,441,335.29	214,902.90	2,656,238.19
	212 Dental Insurance	53,451.50	6,502.20	59,953.70
	215 Eye Care Insurance		1,564.00	1,564.00
	216 Prescription Insurance			
	271 Self-Insurance Medical Benefits			
	272 Self-Insurance Dental Benefits			
	275 Self-Insurance Eye Care Benefits			
	276 Self-Insurance Prescription Benefits			
	FUND TOTAL	\$2,494,786.79	\$222,969.10	\$2,717,755.89
50 Enterprise Fund	No Self Insurance data to report			
	211 Medical Insurance	158,771.04		158,771.04
	212 Dental Insurance	3,321.12		3,321.12
	215 Eye Care Insurance			
	216 Prescription Insurance			
	271 Self-Insurance Medical Benefits			
	272 Self-Insurance Dental Benefits			
	275 Self-Insurance Eye Care Benefits			
	276 Self-Insurance Prescription Benefits			
	FUND TOTAL	\$162,092.16		\$162,092.16
60 Internal Service Fund	No Self Insurance data to report			
	211 Medical Insurance			
	212 Dental Insurance			
	215 Eye Care Insurance			
	216 Prescription Insurance			
	271 Self-Insurance Medical Benefits			
	272 Self-Insurance Dental Benefits			
	275 Self-Insurance Eye Care Benefits			
	276 Self-Insurance Prescription Benefits			
	FUND TOTAL			
Total of All Funds		\$2,656,878.95	\$222,969.10	\$2,879,848.05

LEA : 111312503 Huntingdon Area SD

Printed 10/26/2022 9:24:05 AM

Function	Special Education (Prior Year)	Nonspecial Education (Prior Year)	Total (Prior Year)	Special Education (Current Year)	Nonspecial Education (Current Year)	Total (Current Year)
2120 Guidance Services	100,996.61	375,055.12	476,051.73	115,805.94	416,723.67	532,529.61
2140 Psychological Services	52,416.76	194,651.82	247,068.58	50,605.36	178,543.16	229,148.52
2150 Speech Pathology and Audiology Services						
2160 Social Work Services	18,324.86	68,050.14	86,375.00	23,214.01	83,534.83	106,748.84
2260 Instruction and Curriculum Development Services	81,156.01	301,376.23	382,532.24	95,181.57	342,507.61	437,689.18
2350 Legal and Accounting Services	36,324.50	53,084.50	89,409.00	14,605.10	47,835.29	62,440.39
2420 Medical Services						
2440 Nursing Services	63,549.67	235,994.37	299,544.04	66,289.06	238,538.89	304,827.95
2700 Student Transportation Services	653,316.80	1,561,694.39	2,215,011.19	663,763.68	1,550,892.96	2,214,656.64
Total	\$1,006,085.21	\$2,789,906.57	\$3,795,991.78	\$1,029,464.72	\$2,858,576.41	\$3,888,041.13

LEA : 111312503 Huntingdon Area SD

Printed 10/26/2022 9:24:07 AM

(PRINCIPAL AMOUNTS ONLY)

GOVERNMENTAL FUNDS/ ACTIVITIES

	Short-Term Borrowing	General Obligation Bonds/Notes	Authority Building Obligations	OLTD, Ext Term Fin, Leases	Other Post- Employment Benefits (OPEB)	Compensated Absences	Net Pension Liability	Total
1. Debt at Beginning of Fiscal Year		35,420,000.00			5,355,227.00	747,357.00	33,562,733.00	75,085,317.00
2. Additional Debt Incurred During Year								
3. Retirements and Repayments		1,065,000.00			153,296.00	687.87	1,034,015.25	2,252,999.12
4. Debt at End of Fiscal Year		34,355,000.00			5,201,931.00	746,669.13	32,528,717.75	72,832,317.88
5. Accreted Interest at End Of Fiscal Year								
6. Total Debt and Accreted Interest		34,355,000.00			5,201,931.00	746,669.13	32,528,717.75	72,832,317.88
7. Current Portion P&I - Due within 1 year		1,061,026.60						1,061,026.60
8. Interest Paid during current fiscal year		985,333.58						985,333.58

(PRINCIPAL AMOUNTS ONLY)

PROPRIETARY FUNDS

	Short-Term Borrowing	General Obligation Bonds/Notes	Authority Building Obligations	OLTD, Ext Term Fin, Leases	Other Post- Employment Benefits (OPEB)	Compensated Absences	Net Pension Liability	Total
1. Debt at Beginning of Fiscal Year							918,507.00	918,507.00
2. Additional Debt Incurred During Year								
3. Retirements and Repayments								
4. Debt at End of Fiscal Year							918,507.00	918,507.00
5. Accreted Interest at End Of Fiscal Year								
6. Total Debt and Accreted Interest							918,507.00	918,507.00
7. Current Portion P&I - Due within 1 year								
8. Interest Paid during current fiscal year								

LEA : 111312503 Huntingdon Area SD

Printed 10/26/2022 9:24:07 AM

Total Principal and Interest Payments Made by Your School - All Funds

Function	Fund		Principal (910)	Principal (920)	Interest (830)	Total (Principal +Interest)	Misc Other Uses (990)
5110	10	General Fund	1,061,026.60		985,333.68	2,046,360.28	
5110	20	Special Revenue Funds					
5110	30	Capital Projects Funds					
5110	40	Debt Service Fund					
5110	90	Permanent Fund					
5120	10	General Fund					
5120	20	Special Revenue Funds					
5120	30	Capital Projects Funds					
5120	40	Debt Service Fund					
Total Debt Payments - Governmental Funds			\$1,061,026.60		\$985,333.68	\$2,046,360.28	

Function	Fund		Principal (910)	Principal (920)	Interest (830)	Total (Principal +Interest)
5110	50	Enterprise Fund				
5110	60	Internal Service Fund				
5120	50	Enterprise Fund				
5120	60	Internal Service Fund				
Total Debt Payments - Proprietary Funds						

LEA : 111312503 Huntingdon Area SD

Debt Details
Governmental Funds/ Activities

Debt Category	Debt Issue Date (MM/YYYY)	Principal Amounts Only				Current Portion Due Within One Year (Principal and Interest)	Interest Paid During Fiscal Year
		Debt at Beginning of Fiscal Year	Additions	Reductions / Repayments	Debt at End of Fiscal Year		
General Obligation Bonds/Notes – CIB	03/2020	9,545,000.00		10,000.00	9,535,000.00	10,000.00	266,314.58
General Obligation Bonds/Notes – CIB	11/2019	6,200,000.00		1,005,000.00	5,195,000.00	1,005,000.00	284,875.00
General Obligation Bonds/Notes – CIB	10/2016	9,705,000.00		50,000.00	9,655,000.00	50,000.00	276,140.00
General Obligation Bonds/Notes – CIB	6/2020	9,970,000.00			9,970,000.00	(3,973.40)	158,004.00
Compensated Absences		747,357.00		687.87	746,669.13		
Other Post-Employment Benefits (OPEB)		5,355,227.00		153,296.00	5,201,931.00		
Net Pension Liability		33,562,733.00		1,034,015.25	32,528,717.75		
Totals for Debt Entered:		\$75,085,317.00		\$2,252,999.12	\$72,832,317.88	\$1,061,026.60	\$985,333.58

Bond Details
Proprietary Funds

Debt Category	Debt Issue Date (MM/YYYY)	Principal Amounts Only				Current Portion Due Within One Year (Principal and Interest)	Interest Paid During Fiscal Year
		Debt at Beginning of Fiscal Year	Additions	Reductions / Repayments	Debt at End of Fiscal Year		
Net Pension Liability		918,507.00			918,507.00		
Totals for Debt Entered:		\$918,507.00			\$918,507.00		

LEA : 111312503 Huntingdon Area SD

General Fund (10)

Section 1: Tuition/Purchased Services as Reported within Expenditure Detail	Amount
Tuition Reported in General Fund Expenditures 1000-560	3,590,407.39
Purchased Services in General Fund Expenditures 1000-594 and 1000-597	677.18
Section 1 Total	\$3,591,084.57

Section 2: Tuition Paid to Institution Types During Fiscal Year	Tuition Paid For Nonspecial Education	Tuition Paid For Special Education	Total
1 1306 Institutions			
2 Institutionalized Children's Programs			
3 Juveniles Incarcerated in Adult Facilities			
4 Residential Treatment Facilities			
5 Other Local Education Agencies	34,976.00	35,532.09	70,508.09
6 Brick and Mortar Charter Schools	1,158,265.26	713,396.59	1,871,661.85
7 Cyber Charter Schools	546,873.63	393,986.29	940,859.92
8 Career and Technology Centers	593,124.00		593,124.00
9 Approved Private Schools			
10 PA Chartered Schools for the Deaf and Blind		67,575.52	67,575.52
11 Private Residential Rehabilitative Institutions	39,569.41	3,778.10	43,347.51
12 Juvenile Detention Centers			
13 Special Program Jointures			
14 Other Tuition Not Included Elsewhere In This Section	4,007.68		4,007.68
Section 2 Total	\$2,376,815.98	\$1,214,268.59	\$3,591,084.57

LEA : 111312503 Huntingdon Area SD

Printed 10/26/2022 9:24:11 AM

Food Service / Cafeteria Operations Fund (51)

3000 Operation of Non-Instructional Services

Total

100	<u>Personnel Services – Salaries</u>	
100	Personnel Services – Salaries	293,853.00
Total Personnel Services – Salaries		\$293,853.00
200	<u>Personnel Services – Employee Benefits</u>	
210	Group Insurance – Contracted Provider	(43,480.84)
220	Social Security Contributions	20,289.13
230	PSERS Retirement Contributions	90,202.62
250	Unemployment Compensation	1,951.14
260	Workers' Compensation	5,205.22
292	Health Savings Accounts	13,580.00
Total Personnel Services – Employee Benefits		\$87,747.27
500	<u>Other Purchased Services</u>	
570	Food Service Management	417,079.00
Total Other Purchased Services		\$417,079.00
600	<u>Supplies</u>	
610	General Supplies	73,169.00
Total Supplies		\$73,169.00
700	<u>Property</u>	
740	Depreciation	1,894.00
Total Property		\$1,894.00
Total 3000 Operation of Non-Instructional Services		\$873,742.27

LEA : 111312503 Huntingdon Area SD

Printed 10/26/2022 9:24:11 AM

Food Service / Cafeteria Operations Fund (51)

3100 Food Services	<u>Elementary</u>	<u>Secondary</u>	<u>Federal</u>	<u>Total</u>
100 <u>Personnel Services – Salaries</u>				
100 Personnel Services – Salaries				293,853.00
Total Personnel Services – Salaries				\$293,853.00
200 <u>Personnel Services – Employee Benefits</u>				
210 Group Insurance – Contracted Provider				(43,480.84)
220 Social Security Contributions				20,289.13
230 PSERS Retirement Contributions				90,202.62
250 Unemployment Compensation				1,951.14
260 Workers' Compensation				5,205.22
292 Health Savings Accounts				13,580.00
Total Personnel Services – Employee Benefits				\$87,747.27
500 <u>Other Purchased Services</u>				
570 Food Service Management				417,079.00
Total Other Purchased Services				\$417,079.00
600 <u>Supplies</u>				
610 General Supplies				73,169.00
Total Supplies				\$73,169.00
700 <u>Property</u>				
740 Depreciation				1,894.00
Total Property				\$1,894.00
Total 3100 Food Services				\$873,742.27

	<u>Food Service(51)</u>	<u>Child Care Operations(52)</u>	<u>Other Enterprise(58)</u>	<u>Internal Service(60)</u>	<u>Total</u>
3000 <u>Operation of Non-Instructional Services</u>					
3100 Food Services	873,742.27				873,742.27
Total Operation of Non-Instructional Services	\$873,742.27				\$873,742.27
TOTAL ACTUAL EXPENDITURES & OTHER FINANCING USES	\$873,742.27				\$873,742.27

LEA : 111312503 Huntingdon Area SD

Printed 10/26/2022 9:24:19 AM

Fund	School	School Number	Local Personnel	Local Nonpersonnel	State Personnel	State Nonpersonnel	Federal Personnel	Federal Nonpersonnel	Total	Explanation
10										
	Huntingdon Area MS	5333	2,025,067.82	506,623.50	2,439,367.41	610,271.35	198,358.26	327,664.30	6,107,352.64	
	Huntingdon Area SHS	2305	2,648,473.26	651,885.42	3,190,312.58	785,251.76	247,691.34	405,659.63	7,929,273.99	
	Southside El Sch	7525	1,812,183.00	392,418.40	2,182,929.44	472,701.54	97,685.42	3,995,112.44	8,953,030.24	
	Standing Stone El Sch	7620	2,258,750.09	505,266.38	2,720,857.69	608,636.57	527,557.66	132,831.81	6,753,900.20	
Total			8,744,474.17	2,056,193.70	10,533,467.12	2,476,861.22	1,071,292.68	4,861,268.18	29,743,557.07	

	<u>Nonspecial Education</u>	<u>Special Education</u>
1000 Instruction		
1100 Regular Programs - Elementary / Secondary	2,569.00	
1400 Other Instructional Programs - Elementary / Secondary	2,249.00	
Total Instruction	\$4,818.00	
TOTAL ACTUAL EXPENDITURES & OTHER FINANCING USES	\$4,818.00	

LEA : 111312503 Huntingdon Area SD

Printed 10/26/2022 9:24:27 AM

1000 Instruction

100 <u>Personnel Services - Salaries</u>	
100 Personnel Services - Salaries	3,372.00
Total Personnel Services - Salaries	\$3,372.00
200 <u>Personnel Services - Employee Benefits</u>	
220 Social Security Contributions	245.00
230 PSERS Retirement Contributions	1,168.00
260 Workers' Compensation	33.00
Total Personnel Services - Employee Benefits	\$1,446.00
Total 1000 Instruction	\$4,818.00

LEA : 111312503 Huntingdon Area SD

Printed 10/26/2022 9:24:27 AM

1100 Regular Programs - Elementary / Secondary	<u>Nonspecial Education</u>	<u>Special Education</u>
100 <u>Personnel Services - Salaries</u>		
100 Personnel Services - Salaries	1,800.00	
Total Personnel Services - Salaries	\$1,800.00	
200 <u>Personnel Services - Employee Benefits</u>		
220 Social Security Contributions	130.00	
230 PSERS Retirement Contributions	625.00	
260 Workers' Compensation	14.00	
Total Personnel Services - Employee Benefits	\$769.00	
Total 1100 Regular Programs - Elementary / Secondary	\$2,569.00	

LEA : 111312503 Huntingdon Area SD

Printed 10/26/2022 9:24:27 AM

1110 Regular Programs	<u>Nonspecial Education</u>	<u>Special Education</u>
100 <u>Personnel Services - Salaries</u>		
100 Personnel Services - Salaries	1,800.00	
Total Personnel Services - Salaries	\$1,800.00	
200 <u>Personnel Services - Employee Benefits</u>		
220 Social Security Contributions	130.00	
230 PSERS Retirement Contributions	625.00	
260 Workers' Compensation	14.00	
Total Personnel Services - Employee Benefits	\$769.00	
Total 1110 Regular Programs	\$2,569.00	

LEA : 111312503 Huntingdon Area SD

Printed 10/26/2022 9:24:27 AM

1400 Other Instructional Programs - Elementary / Secondary	<u>Nonspecial Education</u>	<u>Special Education</u>
100 <u>Personnel Services - Salaries</u>		
100 Personnel Services - Salaries	1,572.00	
Total Personnel Services - Salaries	\$1,572.00	
200 <u>Personnel Services - Employee Benefits</u>		
220 Social Security Contributions	115.00	
230 PSERS Retirement Contributions	543.00	
260 Workers' Compensation	19.00	
Total Personnel Services - Employee Benefits	\$677.00	
Total 1400 Other Instructional Programs - Elementary / Secondary	\$2,249.00	

LEA : 111312503 Huntingdon Area SD

Printed 10/26/2022 9:24:27 AM

1440 Alternative Regular Education Programs	<u>Nonspecial Education</u>	<u>Special Education</u>
100 <u>Personnel Services - Salaries</u>		
100 Personnel Services - Salaries	1,572.00	
Total Personnel Services - Salaries	\$1,572.00	
200 <u>Personnel Services - Employee Benefits</u>		
220 Social Security Contributions	115.00	
230 PSERS Retirement Contributions	543.00	
260 Workers' Compensation	19.00	
Total Personnel Services - Employee Benefits	\$677.00	
Total 1440 Alternative Regular Education Programs	\$2,249.00	

LEA : 111312503 Huntingdon Area SD

Printed 10/26/2022 9:24:27 AM

1441 Adjudicated / Court-Placed Programs	<u>Nonspecial Education</u>	<u>Special Education</u>
100 <u>Personnel Services - Salaries</u>		
100 Personnel Services - Salaries	1,572.00	
Total Personnel Services - Salaries	\$1,572.00	
200 <u>Personnel Services - Employee Benefits</u>		
220 Social Security Contributions	115.00	
230 PSERS Retirement Contributions	543.00	
260 Workers' Compensation	19.00	
Total Personnel Services - Employee Benefits	\$677.00	
Total 1441 Adjudicated / Court-Placed Programs	\$2,249.00	