

LEA Name : Huntingdon Area SD
Address : 2400 Cassady Ave
Huntingdon , PA 16652

County : Huntingdon
AUN Number : 111312503
LEA Type : SD

Annual Financial Report Accuracy Certification Statement

For Fiscal Year Ending
6/30/2017

Pennsylvania Department of Education
&
Office of Comptroller Operations

PDE-2056: Intermediate Unit

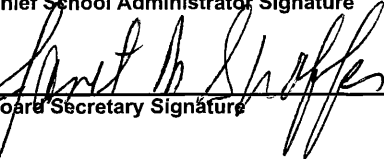
PDE-2057: School District, AVTS/CTC, Charter School,
and Special Program Jointure

CERTIFICATION: By signing this page I agree that the electronic data submitted is a complete and accurate statement of the financial operations and status of the local education agency for the fiscal year. It has been prepared in accordance with generally accepted accounting principles and established Commonwealth of PA reporting guidelines.



Chief School Administrator Signature

10/30/2017
Date



Board Secretary Signature

10/30/2017
Date

Faith Swanson

Contact Person

fswanson@huntsd.org

Contact Person E-mail Address

(814)641-2120 Ext :

Contact Person Telephone Number

(814) 643 - 6244

Contact Person Fax Number

Audit Certification
Annual Financial Report:
For Fiscal Year Ending **6/30/2017**
(Pursuant to PA School Code Section 218(b))

LEA Name : Huntingdon Area SD
AUN Number : 111312503
County : Huntingdon

Audit Certification Due: 12/31/2017

This certification is applicable to the Annual Financial Report data submitted through the Consolidated Financial Reporting System on: 10/30/2017
Date

Auditing Firm: Young, Oakes, Brown and Company

Auditor Contact Name: John Huber, CPA
Auditor Phone: 814-942-6191
Auditor E-mail: jhuber@yobco.com

CERTIFICATION: By signing this page I agree that the financial statements of the school have been properly audited as noted above pursuant to Article XXIV, and in the auditor's professional opinion, the Annual Financial Report (PDE-2057) submitted on the date referenced is materially consistent with the audited financial statements.

Chief School Administrator

Judith E. Fisher
Signature
12/19/17
Date

Board/Secretary

Robert M. Shaffer
Signature
12/19/17
Date

Faith Swanson
Contact Person
fswanson@huntsd.org
Contact Person E-mail Address

(814)641-2120 Ext :
Contact Person Telephone Number
(814) 643-6244
Contact Person Fax Number

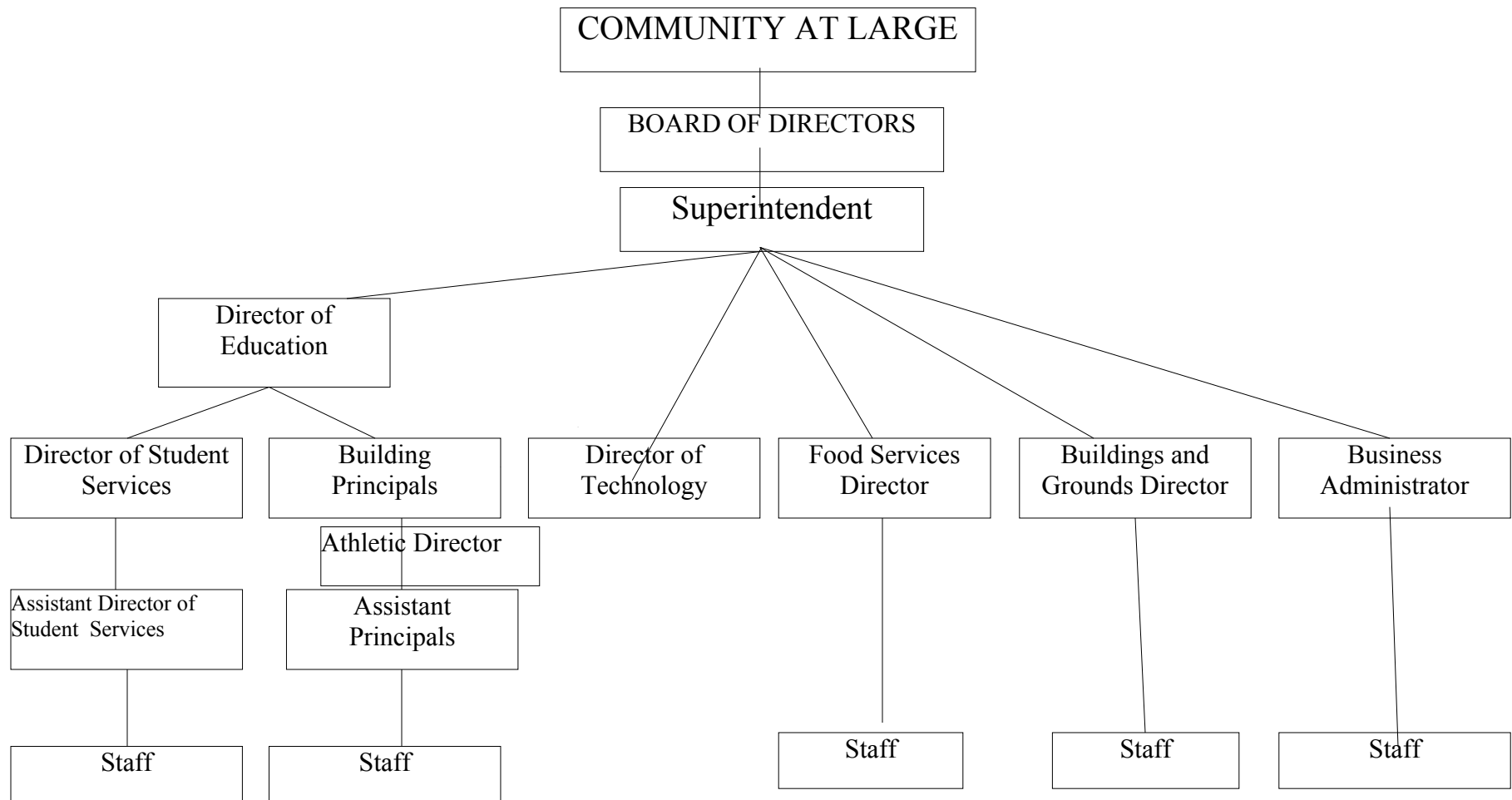
SECTION: ADMINISTRATIVE REGULATION

TITLE: ORGANIZATION CHART

ADOPTED:

REVISED: August 2015

HUNTINGDON AREA SCHOOL DISTRICT



<u>Val Number</u>	<u>Description</u>	<u>Justification</u>
30501	Revenue Detail: AFR amount must equal or exceed PDE FAI System amount. 7311, AFR Rev Detail: \$1,292,753.14 7311, PDE FAI System: \$1,429,358.14	\$136,605 subsidy was booked as a receivable for 2015-16.
41130	There is an entry in function 5150- 990 object "Other". Please explain what constitutes "Other". Expenditure 5150-990, Fund 10: \$59,643.00	Bond discounts on refunded bond.
41660	Expenditure Detail, Salaries (Object 100) and Benefits (Object 200 series): Amounts must be entered for both Salaries and Benefits. Function 2800, Object 100: \$0.00 Function 2800, Object 200: \$882.00	Expenditure is for tuition reimbursement for a non-instructional, non-certificated employee under function code 2836. There are no associated wages
50450	SESS - 2350 Legal and Accounting Services: SESS Schedule amounts for Special Education vary from prior year by 40% or more. Correct the data or enter a justification. SESS Schedule 2350: \$0.00 Prior Year SESS Schedule 2350: \$232.50	There were no special ed legal costs for 2016-17

Amounts Expressed in Whole Dollars	<u>General Fund</u> <u>(10)</u>	<u>Public Purpose Trust</u> <u>(27)</u>	<u>Other Compt Approved</u> <u>(28)</u>	<u>Athletic / Activity</u> <u>(29)</u>	<u>Capital Reserve (690.</u> <u>1850)</u> <u>(31)</u>
Assets And Deferred Outflows Of Resources					
Assets					
0100 Cash and Cash Equivalents	6,015,525				
0110 Investments					
0120 Taxes Receivable	742,511				
0130 Due From Other Funds					
0141 Due From Other Governments	1,130,275				
0142 State Revenue Receivable					
0143 Federal Revenue Receivable					
0145 Other Intergovernmental Revenue Receivable					
0146 Due from Primary Government					
0147 Due from Component Unit					
0150 Other Receivables	9,909				
0170 Inventories					
0180 Prepaid Expenses (Expenditures)					
0190 Other Current Assets					
Total Assets	\$7,898,220				
0910 Deferred Outflows of Resources					
Total Assets And Deferred Outflows Of Resources	\$7,898,220				

Amounts Expressed in Whole Dollars

	<u>Capital Reserve (1431)</u> <u>(32)</u>	<u>Other Capital Projects</u> <u>Fund</u> <u>(39)</u>	<u>Debt Service</u> <u>(40)</u>	<u>Permanent</u> <u>(90)</u>	<u>Total Governmental</u> <u>Funds</u>
Assets And Deferred Outflows Of Resources					
Assets					
0100 Cash and Cash Equivalents	3,226,427				9,241,952
0110 Investments					
0120 Taxes Receivable					742,511
0130 Due From Other Funds					
0141 Due From Other Governments					1,130,275
0142 State Revenue Receivable					
0143 Federal Revenue Receivable					
0145 Other Intergovernmental Revenue Receivable					
0146 Due from Primary Government					
0147 Due from Component Unit					
0150 Other Receivables					9,909
0170 Inventories					
0180 Prepaid Expenses (Expenditures)					
0190 Other Current Assets					
Total Assets	\$3,226,427				\$11,124,647
0910 Deferred Outflows of Resources					
Total Assets And Deferred Outflows Of Resources	\$3,226,427				\$11,124,647

Amounts Expressed in Whole Dollars

<u>General Fund</u>	<u>Public Purpose Trust</u>	<u>Other Compt Approved</u>	<u>Athletic / Activity</u>	<u>Capital Reserve (690.</u>
<u>(10)</u>	<u>(27)</u>	<u>(28)</u>	<u>(29)</u>	<u>1850)</u>
				<u>(31)</u>

Liabilities And Deferred Inflows Of Resources And Fund Balances

Liabilities

0400 Due to Other Funds	28,449
0411 Due to Other Governments	
0412 Due to Primary Government	
0413 Due to Component Unit	
0420 Accounts Payable	338,009
0430 Contracts Payable	
0440 Current Portion of Long-Term Debt	
0450 Short-Term Payables	
0461 Accrued Salaries and Benefits	1,495,336
0462 Payroll Deductions and Withholding	829,592
0480 Unearned Revenues	
0490 Other Current Liabilities	(1,720)

Total Liabilities **\$2,689,666**

0950 Deferred Inflows of Resources	411,902
------------------------------------	---------

Fund Balances

0810 Nonspendable Fund Balance	
0820 Restricted Fund Balance	
0830 Committed Fund Balance	
0840 Assigned Fund Balance	3,437,629
0850 Unassigned Fund Balance	1,359,023

Total Fund Balances **\$4,796,652**

Total Liabilities, Deferred Inflows Of Resources And Fund Balances **\$7,898,220**

Amounts Expressed in Whole Dollars

	<u>Capital Reserve (1431)</u> <u>(32)</u>	<u>Other Capital Projects</u> <u>Fund</u> <u>(39)</u>	<u>Debt Service</u> <u>(40)</u>	<u>Permanent</u> <u>(90)</u>	<u>Total Governmental</u> <u>Funds</u>
Liabilities And Deferred Inflows Of Resources And Fund Balances					
Liabilities					
0400 Due to Other Funds					28,449
0411 Due to Other Governments					
0412 Due to Primary Government					
0413 Due to Component Unit					
0420 Accounts Payable					338,009
0430 Contracts Payable					
0440 Current Portion of Long-Term Debt					
0450 Short-Term Payables					
0461 Accrued Salaries and Benefits					1,495,336
0462 Payroll Deductions and Withholding					829,592
0480 Unearned Revenues					
0490 Other Current Liabilities					(1,720)
Total Liabilities					\$2,689,666
0950 Deferred Inflows of Resources					411,902
Fund Balances					
0810 Nonspendable Fund Balance					
0820 Restricted Fund Balance	3,226,427				3,226,427
0830 Committed Fund Balance					
0840 Assigned Fund Balance					3,437,629
0850 Unassigned Fund Balance					1,359,023
Total Fund Balances	\$3,226,427				\$8,023,079
Total Liabilities, Deferred Inflows Of Resources And Fund Balances	\$3,226,427				\$11,124,647

Amounts Expressed in Whole Dollars	<u>General Fund</u> <u>(10)</u>	<u>Public Purpose Trust</u> <u>(27)</u>	<u>Other Compt Approved</u> <u>(28)</u>	<u>Athletic / Activity</u> <u>(29)</u>	<u>Capital Reserve (690.</u> <u>1850)</u> <u>(31)</u>
Revenues					
6000 Revenue from Local Sources	12,119,446				
7000 Revenue from State Sources	14,456,370				
8000 Revenue from Federal Sources	686,666				
Total Revenues	\$27,262,482				
Expenditures					
1000 Instruction	15,523,780				
2000 Support Services	9,192,580				
3000 Operation of Non-Instructional Services	564,409				
4000 Facilities Acquisition, Construction and Improvement Services	7,230				
5110 Debt Service	2,245,952				
5130 Refund of Prior Year Revenues / Receipts	3,300				
Total Expenditures	\$27,537,251				
Excess (Deficiency) Of Revenues Over Expenditures	(\$274,769)				
Other Financing Sources (Uses)					
9110 Face Value of Bonds Issued					
9120 Proceeds from Refunding of Bonds	9,930,000				
9130 Bond Premiums					
9200 Proceeds from Extended-Term Financing					
9300 Interfund Transfers - IN					
9400 Sale of or Compensation for Loss of Fixed Assets					
9710 Transfers from Component Units					
9720 Transfers from Primary Governments					
9910 Other Financing Sources Not Listed in the 9000 Series					
9990 Insurance Recoveries					
5120 Debt Service – Refunded Bonds	9,713,504				
5150 Bond Discounts	59,643				
5200 Interfund Transfers – Out	150,000				
5300 Transfers Out to Component Units/Primary Governments					
Total Other Financing Sources (Uses)	\$6,853				

Amounts Expressed in Whole Dollars	<u>Capital Reserve (1431)</u> <u>(32)</u>	<u>Other Capital Projects</u> <u>Fund</u> <u>(39)</u>	<u>Debt Service</u> <u>(40)</u>	<u>Permanent</u> <u>(90)</u>	<u>Total Governmental</u> <u>Funds</u>
Revenues					
6000 Revenue from Local Sources	18,034				12,137,480
7000 Revenue from State Sources					14,456,370
8000 Revenue from Federal Sources					686,666
Total Revenues	\$18,034				\$27,280,516
Expenditures					
1000 Instruction					15,523,780
2000 Support Services	734				9,193,314
3000 Operation of Non-Instructional Services					564,409
4000 Facilities Acquisition, Construction and Improvement Services	641,987				649,217
5110 Debt Service					2,245,952
5130 Refund of Prior Year Revenues / Receipts					3,300
Total Expenditures	\$642,721				\$28,179,972
Excess (Deficiency) Of Revenues Over Expenditures	(\$624,687)				(\$899,456)
Other Financing Sources (Uses)					
9110 Face Value of Bonds Issued					
9120 Proceeds from Refunding of Bonds					9,930,000
9130 Bond Premiums					
9200 Proceeds from Extended-Term Financing					
9300 Interfund Transfers - IN					
9400 Sale of or Compensation for Loss of Fixed Assets					
9710 Transfers from Component Units					
9720 Transfers from Primary Governments					
9910 Other Financing Sources Not Listed in the 9000 Series					
9990 Insurance Recoveries					
5120 Debt Service – Refunded Bonds					9,713,504
5150 Bond Discounts					59,643
5200 Interfund Transfers – Out					150,000
5300 Transfers Out to Component Units/Primary Governments					
Total Other Financing Sources (Uses)					\$6,853

Amounts Expressed in Whole Dollars	<u>General Fund</u> <u>(10)</u>	<u>Public Purpose Trust</u> <u>(27)</u>	<u>Other Compt Approved</u> <u>(28)</u>	<u>Athletic / Activity</u> <u>(29)</u>	<u>Capital Reserve</u> <u>(690.</u> <u>1850)</u> <u>(31)</u>
Special And Extraordinary Items					
9920 Special Items – Gains					
9930 Extraordinary Items – Gains					
5520 Special Items – Losses					
5530 Extraordinary Items – Losses					
Net Change In Fund Balances	(\$267,916)				
Fund Balance					
0001 Fund Balance - Beginning of Fiscal Year	5,064,568				
Fund Balance - End Of Year	\$4,796,652				

Amounts Expressed in Whole Dollars	<u>Capital Reserve (1431)</u> <u>(32)</u>	<u>Other Capital Projects</u> <u>Fund</u> <u>(39)</u>	<u>Debt Service</u> <u>(40)</u>	<u>Permanent</u> <u>(90)</u>	<u>Total Governmental</u> <u>Funds</u>
Special And Extraordinary Items					
9920 Special Items – Gains					
9930 Extraordinary Items – Gains					
5520 Special Items – Losses					
5530 Extraordinary Items – Losses					
Net Change In Fund Balances	(\$624,687)				(\$892,603)
Fund Balance					
0001 Fund Balance - Beginning of Fiscal Year		3,851,114			8,915,682
Fund Balance - End Of Year		\$3,226,427			\$8,023,079

Amounts Expressed in Whole Dollars	<u>Food Service</u> <u>(51)</u>	<u>Child Care</u> <u>Operations</u> <u>(52)</u>	<u>Other Enterprise</u> <u>(58)</u>	<u>TOTAL</u>	<u>Internal Service</u> <u>(60)</u>
Assets And Deferred Outflows Of Resources					
Current Assets					
0100 Cash and Cash Equivalents	209,822			209,822	
0110 Investments					
0130 Due From Other Funds	28,458			28,458	
0141 Due From Other Governments					
0142 State Revenue Receivable					
0143 Federal Revenue Receivable					
0146 Due from Primary Government					
0147 Due from Component Unit					
0150 Other Receivables					
0170 Inventories	65,976			65,976	
0180 Prepaid Expenses (Expenditures)					
0190 Other Current Assets					
Total Current Assets	\$304,256			\$304,256	
Noncurrent Assets					
0211 Land					
0212 Site Improvements (Net)					
0220 Buildings and Building Improvements (Net)					
0230 Machinery, Equipment and Furniture (Net)	24,209			24,209	
0250 Construction in Progress					
0260 Long Term Prepayments					
0290 Other Noncurrent Assets					
Total Noncurrent Assets	\$24,209			\$24,209	
0910 Deferred Outflows of Resources					
Total Assets And Deferred Outflows Of Resources	\$328,465			\$328,465	

Amounts Expressed in Whole Dollars	<u>Food Service</u> <u>(51)</u>	<u>Child Care</u> <u>Operations</u> <u>(52)</u>	<u>Other Enterprise</u> <u>(58)</u>	<u>TOTAL</u>	<u>Internal Service</u> <u>(60)</u>
Liabilities And Deferred Inflows Of Resources And Net Position					
Current Liabilities					
0400 Due to Other Funds					
0411 Due to Other Governments					
0413 Due to Component Unit					
0420 Accounts Payable					
0430 Contracts Payable					
0440 Current Portion of Long-Term Debt					
0450 Short-Term Payables					
0461 Accrued Salaries and Benefits	41,504			41,504	
0462 Payroll Deductions and Withholding					
0480 Unearned Revenues	9,962			9,962	
0490 Other Current Liabilities					
Total Current Liabilities	\$51,466			\$51,466	
Noncurrent Liabilities					
0510 Bonds Payable					
0520 Extended-Term Financing Agreements Payable					
0530 Lease-Purchase Obligations					
0540 Accumulated Compensated Absences	22,118			22,118	
0550 Authority Lease Obligations					
0560 Other Post-Employment Benefits (OPEB)	143,837			143,837	
0570 Net Pension Liability					
0599 Other Noncurrent Liabilities					
Total Noncurrent Liabilities	\$165,955			\$165,955	
Total Liabilities	\$217,421			\$217,421	
0950 Deferred Inflows of Resources					
Net Position					
0791 Net Investment in Capital Assets	24,209			24,209	
0008 Restricted Net Position (0792 – 0798)					
0799 Unrestricted Net Position	86,835			86,835	
Total Net Position	\$111,044			\$111,044	
Total Liabilities And Deferred Inflows Of Resources And Net Position	\$328,465			\$328,465	

Amounts Expressed in Whole Dollars	<u>Food Service</u> <u>(51)</u>	<u>Child Care Operations</u> <u>(52)</u>	<u>Other Enterprise</u> <u>(58)</u>	<u>TOTAL</u>	<u>Internal Service</u> <u>(60)</u>
Operating Revenues					
6600 Food Service Revenue	265,986			265,986	
0071 Charges for Services					
0072 Other Operating Revenue					
Total Operating Revenues	\$265,986			\$265,986	
Operating Expenses					
100 Personnel Services – Salaries	371,888			371,888	
200 Personnel Services – Employee Benefits	276,228			276,228	
300 Purchased Professional and Technical Services					
400 Purchased Property Services	10,333			10,333	
500 Other Purchased Services	575			575	
600 Supplies	390,548			390,548	
740 Depreciation	8,663			8,663	
810 Dues and Fees	554			554	
890 Miscellaneous Expenditures					
Total Operating Expenses	\$1,058,789			\$1,058,789	
Operating Income (Loss)	(\$792,803)			(\$792,803)	
Non Operating Revenues (Expenses)					
6500 Earnings on Investments					
6920 Contributions and Donations from Private Sources					
6930 Gains or Losses on Sale of Fixed Assets					
6991 Refunds of a Prior Year Expenditure					
7000 Revenue from State Sources	28,187			28,187	
8000 Revenue from Federal Sources	556,074			556,074	
820 Claims and Judgments Against the LEA					
830 Interest					
TOTAL Non Operating Revenues (Expenses)	\$584,261			\$584,261	
Income (Loss) Before Contributions And Transfers	(\$208,542)			(\$208,542)	

Amounts Expressed in Whole Dollars	<u>Food Service</u> <u>(51)</u>	<u>Child Care Operations</u> <u>(52)</u>	<u>Other Enterprise</u> <u>(58)</u>	<u>TOTAL</u>	<u>Internal Service</u> <u>(60)</u>
Contributions, Transfers, and Special and Extraordinary Items					
5200 Interfund Transfers – Out					
5300 Transfers Out to Component Units/Primary Governments					
5520 Special Items – Losses					
5530 Extraordinary Items – Losses					
9300 Interfund Transfers - IN	150,000			150,000	
9500 Capital Contributions					
9700 Transfers IN From Component Units/Primary Governments					
9920 Special Items – Gains					
9930 Extraordinary Items – Gains					
Change In Net Position	(\$58,542)			(\$58,542)	
0002 Net Position - Beginning of Fiscal Year	169,587			169,587	
0003 Accounting Changes / Residual Equity Transfers					
Net Position - End Of Year	\$111,045			\$111,045	

Amounts Expressed in Whole Dollars	<u>Food Service</u> <u>(51)</u>	<u>Child Care Operations</u> <u>(52)</u>	<u>Other Enterprise</u> <u>(58)</u>	<u>TOTAL</u>	<u>Internal Service(60)</u>
Cash Flows From Operating Activities					
0011 Cash Receipts From Users	264,966			264,966	
0012 Cash Receipts From Assessments Made to Other Funds					
0013 Cash Receipts From Earnings on Investments					
0014 Cash Receipts From Other Operating Revenue					
0015 Cash Payments To Employees For Services	656,930			656,930	
0016 Cash Payments For Insurance Claims					
0017 Cash Payments To Suppliers For Goods and Services	405,090			405,090	
0018 Cash Payments For Other Operating Expenses	10,908			10,908	
Net Cash Provided By (Used For) Operating Activities	(\$807,962)			(\$807,962)	
Cash Flows From Non-Capital Financing Activities					
0021 Receipts From Local Sources - 6000					
0022 Receipts From State Sources - 7000	32,080			32,080	
0023 Receipts From Federal Sources -8000	621,946			621,946	
0024 Notes and Loans Received (Repaid)					
0025 Interest Paid on Notes/Loans - 5100-830					
0026 Operating Transfers In (Out)/Residual Equity Trans					
0027 Operating Transfers In (Out) Primary Government / Comp Unit	150,000			150,000	
0028 Receipts From Refund of Prior Year Expenditures - 6991					
0029 Special and Extraordinary Gains (losses)					
Net Cash Prov By (Used for) Non-Capital Financing Activities	\$804,026			\$804,026	
Cash Flows From Capital and Related Financing Activities					
0031 Payments For Fac Acq, Const, and Imp - 4000	(9,470)			(9,470)	
0032 Gain / (Loss) on Sale of Fixed Assets - 6930					
0033 Proceeds From Extended Term Financing - 9200					
0034 Principal Paid on Financing Agreements					
0035 Interest Paid on Financing Agreements - 5100-830					
0036 (Inc) Dec in Contributed Capital					
Net Cash Prov By (Used for) Capital and Related Financing Activities	(\$9,470)			(\$9,470)	
Cash Flows From Investing Activities					
0041 Earnings on Investments - 6500					
0042 Purchase of Inv Securities / Deposits to Inv Pools					
0043 Receipts From Investment Pool Withdrawals					
0044 Proceeds from Sale and Maturity of Inv Securities					
0045 Loans Received (Paid)					
Net Cash Prov By (Used for) Investing Activities					

	<u>Food Service</u> <u>(51)</u>	<u>Child Care Operations</u> <u>(52)</u>	<u>Other Enterprise</u> <u>(58)</u>	<u>TOTAL</u>	<u>Internal Service</u> <u>(60)</u>
Net Increase (Decrease) in Cash Flows	(13,406)			(13,406)	
0004 Cash and Cash Equivalents Beginning of Year	223,228			223,228	
Cash and Cash Equivalents at Year End	\$209,822			\$209,822	
<hr/>					
Reconciliation of Operating Income (Loss) To Net Cash Provided by (Used For) Operating Activities					
0005 Operating Income (Loss) per REP	(792,803)			(792,803)	
Adjustments					
0051 Depreciation and Net Amortization	8,663			8,663	
0052 Provision for Uncollectible Accounts					
0053 Other Adjustments					
Effect of Changes in Assets, Liabilities, Deferred Outflows and Deferred Inflows					
0054 (Inc) Dec In Accounts Receivable (0120-0150)	(12,304)			(12,304)	
0055 Advances to Other Funds (0160)					
0056 (Inc) Dec in Inventories (0170)	(13,984)			(13,984)	
0057 (Inc) Dec in Prepaid Expenses (0180)					
0058 (Inc) Dec in Other Current or Noncurrent Assets					
0064 Deferred Outflows (0910)					
0059 Inc (Dec) in Accounts Payable (0400-0450)	(4)			(4)	
0060 Inc (Dec) in Accrued Salaries/Benefits (0461)	2,306			2,306	
0065 Inc (Dec) in Net Pension Liabilities (0570)					
0066 Inc (Dec) in Other Postemp Benefit Oblig (0560)	(1,061)			(1,061)	
0061 Inc (Dec) in Payroll Deductions/Withholding (0462)					
0062 Inc (Dec) in Unearned Revenue (0480)	(1,020)			(1,020)	
0063 Inc (Dec) in Other Current or Noncurrent Liabilities	2,245			2,245	
0067 Deferred Inflows (0950)					
Total Adjustments	(\$15,159)			(\$15,159)	
Cash Provided By (Used for) Total	(\$807,962)			(\$807,962)	

**COMBINED STATEMENT OF CASH FLOWS
SCHEDULE OF NONCASH INVESTING, CAPITAL, AND FINANCING ACTIVITIES**

Explanation of Transaction and Balance Sheet Effect	Amount
Total	

LEA : 111312503 Huntingdon Area SD

Printed 12/21/2017 8:59:15 AM

Amounts Expressed in Whole Dollars

Private Purpose Trust
(71)

Investment Trust
(72)

Pension Trust
(73)

Activity
(81)

Assets And Deferred Outflows Of Resources

Assets

0100 Cash and Cash Equivalents				66,111
0110 Investments				
0130 Due From Other Funds				
0147 Due from Component Unit				
0150 Other Receivables				
0170 Inventories				
0180 Prepaid Expenses (Expenditures)				
0190 Other Current Assets				
0220 Buildings and Building Improvements (Net)				
0230 Machinery, Equipment and Furniture (Net)				

Total Assets **\$66,111**

0910 Deferred Outflows of Resources

Total Assets And Deferred Outflows Of Resources **\$66,111**

LEA : 111312503 Huntingdon Area SD

Printed 12/21/2017 8:59:15 AM

Amounts Expressed in Whole Dollars	<u>Other Agency</u> <u>(89)</u>	<u>Discrete Component Units</u> <u>(98)</u>	<u>Discrete Component Units</u> <u>(99)</u>	<u>Total Fiduciary Funds</u>
Assets And Deferred Outflows Of Resources				
Assets				
0100 Cash and Cash Equivalents				66,111
0110 Investments				
0130 Due From Other Funds				
0147 Due from Component Unit				
0150 Other Receivables				
0170 Inventories				
0180 Prepaid Expenses (Expenditures)				
0190 Other Current Assets				
0220 Buildings and Building Improvements (Net)				
0230 Machinery, Equipment and Furniture (Net)				
Total Assets				\$66,111
0910 Deferred Outflows of Resources				
Total Assets And Deferred Outflows Of Resources				\$66,111

LEA : 111312503 Huntingdon Area SD

Printed 12/21/2017 8:59:15 AM

Amounts Expressed in Whole Dollars	<u>Private Purpose Trust</u> (71)	<u>Investment Trust</u> (72)	<u>Pension Trust</u> (73)	<u>Activity</u> (81)
Liabilities, Deferred Inflows Of Resources And Net Position				
Liabilities				
0400 Due to Other Funds				
0411 Due to Other Governments				
0412 Due to Primary Government				
0413 Due to Component Unit				
0420 Accounts Payable				
0430 Contracts Payable				
0450 Short-Term Payables				
0461 Accrued Salaries and Benefits				
0462 Payroll Deductions and Withholding				
0480 Unearned Revenues				
0490 Other Current Liabilities				66,111
Total Liabilities				\$66,111
Net Position				
0791 Net Investment in Capital Assets				
0009 Restricted Net Position (0792 – 0798)				
0799 Unrestricted Net Position				
Total Net Position				
Total Liabilities, Deferred Inflows Of Resources And Net Position				\$66,111

LEA : 111312503 Huntingdon Area SD

Printed 12/21/2017 8:59:15 AM

Amounts Expressed in Whole Dollars

<u>Other Agency</u>	<u>Discrete Component Units</u>	<u>Discrete Component Units</u>	<u>Total Fiduciary Funds</u>
(89)	(98)	(99)	

Liabilities, Deferred Inflows Of Resources And Net Position

Liabilities

0400 Due to Other Funds				
0411 Due to Other Governments				
0412 Due to Primary Government				
0413 Due to Component Unit				
0420 Accounts Payable				
0430 Contracts Payable				
0450 Short-Term Payables				
0461 Accrued Salaries and Benefits				
0462 Payroll Deductions and Withholding				
0480 Unearned Revenues				
0490 Other Current Liabilities				66,111

Total Liabilities				\$66,111
--------------------------	--	--	--	-----------------

0950 Deferred Inflows of Resources

Net Position

0791 Net Investment in Capital Assets				
0009 Restricted Net Position (0792 – 0798)				
0799 Unrestricted Net Position				

Total Net Position				
---------------------------	--	--	--	--

Total Liabilities, Deferred Inflows Of Resources And Net Position				\$66,111
--	--	--	--	-----------------

	<u>Revenue Reported In Current Year</u>	<u>Current Year Tax Accrual</u>	<u>Prior Year Tax Accrual</u>	<u>Taxes Collected In Current Year</u>
<u>Revenue from Local Sources</u>				
6111 Current Real Estate Taxes	7,606,985.84			7,606,985.84
6113 Public Utility Realty Taxes	12,436.84			12,436.84
6114 Payments in Lieu of Current Taxes - State / Local	58,026.62			58,026.62
6120 Current Per Capita Taxes, Section 679	36,859.15			36,859.15
6131 Current Act 1 Earned Income Taxes	1,211,942.59	42,353.08	26,080.62	1,195,670.13
6141 Current Act 511 Per Capita Taxes	41,438.22			41,438.22
6143 Current Act 511 Local Services Taxes	45,550.29	946.64	744.30	45,347.95
6151 Current Act 511 Earned Income Taxes	1,211,942.88	42,353.08	26,080.64	1,195,670.44
6153 Current Act 511 Real Estate Transfer Taxes	184,668.55	11,920.13	17,401.56	190,149.98
6411 Delinquent Real Estate Taxes	762,347.56	232,999.93	235,074.96	764,422.59
6420 Delinquent Per Capita Taxes, Section 679	3,957.96	15.75	848.00	4,790.21
6431 Delinquent Act 1 Earned Income Taxes	147,532.49		2,338.53	149,871.02
6440 Delinquent Local Enabling Taxes - Flat Rate Assessments	4,304.47	20.75	959.70	5,243.42
6451 Delinquent Act 511 Earned Income Taxes	142,262.96		2,363.58	144,626.54
6500 Earnings on Investments	34,946.52			
6700 Revenues from LEA Activities	66,707.00			
6832 Federal IDEA Revenue Received as Pass Through	396,294.17			
6910 Rentals	19,125.00			
6920 Contributions and Donations from Private Sources	10,133.33			
6941 Regular Day School Tuition	15,125.00			
6942 Summer School Tuition	3,115.00			
6944 Receipts from Other LEAs in Pennsylvania - Education	33,615.63			
6961 Transportation Services Provided Other Pennsylvania LEAs	1,930.80			
6991 Refunds of a Prior Year Expenditure	57,371.76			
6999 Other Revenues Not Specified Above	10,825.26			
TOTAL Revenue from Local Sources	\$12,119,445.89	\$330,609.36	\$311,891.89	\$11,451,538.95

**Revenue Reported
In Current Year**

Revenue from State Sources

7110 Basic Education Funding	7,879,044.41		
7160 Tuition for Orphans Subsidy	16,132.46		
7271 Special Education funds for School-Aged Pupils	1,444,906.36		
7311 Pupil Transportation Subsidy	1,292,753.14		
7312 Nonpublic and Charter School Pupil Transportation Subsidy	67,375.00		
7320 Rental and Sinking Fund Payments / Building Reimbursement Subsidy	378,631.28		
7330 Health Services (Medical, Dental, Nurse, Act 25)	35,590.82		
7340 State Property Tax Reduction Allocation	670,555.82		
7505 Ready to Learn Block Grant	334,138.00		
7599 Other State Revenue Not Listed Elsewhere in the 7000 Series	931.69		
7810 State Share of Social Security and Medicare Taxes	449,640.38		
7820 State Share of Retirement Contributions	1,886,670.43		
TOTAL Revenue from State Sources	\$14,456,369.79		

**Revenue Reported
In Current Year**

Revenue from Federal Sources

8514 NCLB, Title I - Improving the Academic Achievement of the Disadvantaged	414,620.52			
8515 NCLB, Title II - Preparing, Training and Recruiting High Quality Teachers and Principals	120,687.51			
8690 Other Restricted Federal Grants-in-Aid Through the Commonwealth of PA	348.00			
8810 School-Based Access Medicaid Reimbursement Program (SBAP) Reimbursements (Access)	136,658.97			
8820 Medical Assistance Reimbursement for Administrative Claiming (Quarterly) Program	14,351.12			
TOTAL Revenue from Federal Sources	\$686,666.12			

**Revenue Reported
In Current Year**

Other Financing Sources

9120 Proceeds from Refunding of Bonds	9,930,000.00			
TOTAL Other Financing Sources	\$9,930,000.00			
TOTAL FROM ALL SOURCES	\$37,192,481.80	\$330,609.36	\$311,891.89	\$11,451,538.95

Revenue from Local Sources	12,119,445.89
Revenue from State Sources	14,456,369.79
Revenue from Federal Sources	686,666.12
Other Financing Sources	9,930,000.00
TOTAL FROM ALL SOURCES	\$37,192,481.80

General Fund (10)

	<u>Total</u>
1000 Instruction	
100 Personnel Services – Salaries	
100 Personnel Services – Salaries	7,533,350.66
Total Personnel Services – Salaries	\$7,533,350.66
200 Personnel Services – Employee Benefits	
210 Group Insurance – Contracted Provider	1,578,385.52
220 Social Security Contributions	552,988.50
230 PSERS Retirement Contributions	2,243,969.27
250 Unemployment Compensation	6,270.72
260 Workers’ Compensation	80,524.71
292 Health Savings Accounts	213,811.57
Total Personnel Services – Employee Benefits	\$4,675,950.29
300 Purchased Professional and Technical Services	
322 Professional Educational Services – Ius	66,895.88
323 Professional Educational Services – Other Educational Agencies	191,829.90
324 Professional Educational Services – Employee Training and Development Services	867.00
329 Professional Educational Services – Other	315,405.36
330 Other Professional Services	531.80
390 Other Purchased Professional and Technical Services	1,880.00
Total Purchased Professional and Technical Services	\$577,409.94
400 Purchased Property Services	
430 Repairs and Maintenance Services	6,793.36
440 Rentals	84,867.97
Total Purchased Property Services	\$91,661.33
500 Other Purchased Services	
510 Student Transportation Services	31,926.67
561 Tuition To Other School Districts Within the State	95,446.25
562 Tuition To Pennsylvania Charter Schools	1,399,018.56
564 Tuition To Career and Technology Centers	637,392.00
567 Tuition To Approved Private Schools (APS) and PA Chartered Schools for the Deaf and Blind	211,892.33
568 Tuition To Private Residential Rehabilitative Institutions (PRRI) [In-State] and Detention Centers	45,906.98
580 Travel	7,402.01
Total Other Purchased Services	\$2,428,984.80
600 Supplies	
610 General Supplies	165,102.64
620 Energy	385.48
630 Food	2,074.00
640 Books and Periodicals	12,897.84
650 Supplies & Fees – Technology Related	16,279.90
Total Supplies	\$196,739.86
700 Property	
752 Capital Equipment – Original and Additional	18,172.11
Total Property	\$18,172.11

LEA : 111312503 Huntingdon Area SD

Printed 12/21/2017 8:59:18 AM

General Fund (10)

1000 Instruction	<u>Total</u>
800 <u>Other Objects</u>	
810 Dues and Fees	1,511.00
Total Other Objects	\$1,511.00
Total 1000 Instruction	\$15,523,779.99

General Fund (10)

1100 Regular Programs – Elementary / Secondary

	<u>Elementary</u>	<u>Secondary</u>	<u>Federal</u>	<u>Total</u>
100 Personnel Services – Salaries				
100 Personnel Services – Salaries	2,198,835.66	2,715,017.71	382,895.10	5,296,748.47
Total Personnel Services – Salaries	\$2,198,835.66	\$2,715,017.71	\$382,895.10	\$5,296,748.47
200 Personnel Services – Employee Benefits				
210 Group Insurance – Contracted Provider	433,323.29	550,555.11	51,934.05	1,035,812.45
220 Social Security Contributions	161,831.83	199,592.87	28,242.52	389,667.22
230 PSERS Retirement Contributions	709,014.34	806,067.35	57,491.19	1,572,572.88
250 Unemployment Compensation	(1,038.35)	(885.93)	906.56	(1,017.72)
260 Workers' Compensation	22,375.64	27,623.33	4,594.76	54,593.73
292 Health Savings Accounts	57,330.00	72,521.57	6,370.00	136,221.57
Total Personnel Services – Employee Benefits	\$1,382,836.75	\$1,655,474.30	\$149,539.08	\$3,187,850.13
300 Purchased Professional and Technical Services				
323 Professional Educational Services – Other Educational Agencies	11,113.00			11,113.00
329 Professional Educational Services – Other	60,833.75	75,676.98	2,118.99	138,629.72
330 Other Professional Services	531.80			531.80
Total Purchased Professional and Technical Services	\$72,478.55	\$75,676.98	\$2,118.99	\$150,274.52
400 Purchased Property Services				
430 Repairs and Maintenance Services	992.02	4,587.61		5,579.63
440 Rentals	31,356.97	53,511.00		84,867.97
Total Purchased Property Services	\$32,348.99	\$58,098.61		\$90,447.60
500 Other Purchased Services				
510 Student Transportation Services	3,972.75	12,905.48		16,878.23
561 Tuition To Other School Districts Within the State		4,047.85		4,047.85
562 Tuition To Pennsylvania Charter Schools	384,228.96	432,500.17		816,729.13
568 Tuition To Private Residential Rehabilitative Institutions (PRRI) [In-State] and Detention Centers	660.00	4,510.38		5,170.38
580 Travel	855.80	2,327.31		3,183.11
Total Other Purchased Services	\$389,717.51	\$456,291.19		\$846,008.70
600 Supplies				
610 General Supplies	45,217.22	91,013.19		136,230.41
630 Food	2,074.00			2,074.00
640 Books and Periodicals	1,700.09	7,071.23		8,771.32
650 Supplies & Fees – Technology Related	15,114.00	1,125.91		16,239.91
Total Supplies	\$64,105.31	\$99,210.33		\$163,315.64
700 Property				
752 Capital Equipment – Original and Additional		18,172.11		18,172.11
Total Property		\$18,172.11		\$18,172.11
800 Other Objects				
810 Dues and Fees	747.00	764.00		1,511.00
Total Other Objects	\$747.00	\$764.00		\$1,511.00
Total 1100 Regular Programs – Elementary / Secondary	\$4,141,069.77	\$5,078,705.23	\$534,553.17	\$9,754,328.17

General Fund (10)

1110 Regular Programs

	<u>Elementary</u>	<u>Secondary</u>	<u>Federal</u>	<u>Total</u>
100 Personnel Services – Salaries				
100 Personnel Services – Salaries	2,198,835.66	2,715,017.71		4,913,853.37
Total Personnel Services – Salaries	\$2,198,835.66	\$2,715,017.71		\$4,913,853.37
200 Personnel Services – Employee Benefits				
210 Group Insurance – Contracted Provider	433,323.29	550,555.11		983,878.40
220 Social Security Contributions	161,831.83	199,592.87		361,424.70
230 PSERS Retirement Contributions	709,014.34	806,067.35		1,515,081.69
250 Unemployment Compensation	(1,038.35)	(885.93)		(1,924.28)
260 Workers' Compensation	22,375.64	27,623.33		49,998.97
292 Health Savings Accounts	57,330.00	72,521.57		129,851.57
Total Personnel Services – Employee Benefits	\$1,382,836.75	\$1,655,474.30		\$3,038,311.05
300 Purchased Professional and Technical Services				
323 Professional Educational Services – Other Educational Agencies	11,113.00			11,113.00
329 Professional Educational Services – Other	60,833.75	75,676.98		136,510.73
330 Other Professional Services	531.80			531.80
Total Purchased Professional and Technical Services	\$72,478.55	\$75,676.98		\$148,155.53
400 Purchased Property Services				
430 Repairs and Maintenance Services	992.02	4,587.61		5,579.63
440 Rentals	31,356.97	53,511.00		84,867.97
Total Purchased Property Services	\$32,348.99	\$58,098.61		\$90,447.60
500 Other Purchased Services				
510 Student Transportation Services	3,972.75	12,905.48		16,878.23
561 Tuition To Other School Districts Within the State		4,047.85		4,047.85
562 Tuition To Pennsylvania Charter Schools	384,228.96	432,500.17		816,729.13
568 Tuition To Private Residential Rehabilitative Institutions (PRRI) [In-State] and Detention Centers	660.00	4,510.38		5,170.38
580 Travel	855.80	2,327.31		3,183.11
Total Other Purchased Services	\$389,717.51	\$456,291.19		\$846,008.70
600 Supplies				
610 General Supplies	45,217.22	91,013.19		136,230.41
630 Food	2,074.00			2,074.00
640 Books and Periodicals	1,700.09	7,071.23		8,771.32
650 Supplies & Fees – Technology Related	15,114.00	1,125.91		16,239.91
Total Supplies	\$64,105.31	\$99,210.33		\$163,315.64
700 Property				
752 Capital Equipment – Original and Additional		18,172.11		18,172.11
Total Property		\$18,172.11		\$18,172.11
800 Other Objects				
810 Dues and Fees	747.00	764.00		1,511.00
Total Other Objects	\$747.00	\$764.00		\$1,511.00
Total 1110 Regular Programs	\$4,141,069.77	\$5,078,705.23		\$9,219,775.00

General Fund (10)

1190 Federally-Funded Regular Programs

	<u>Elementary</u>	<u>Secondary</u>	<u>Federal</u>	<u>Total</u>
100 Personnel Services – Salaries				
100 Personnel Services – Salaries			382,895.10	382,895.10
Total Personnel Services – Salaries			\$382,895.10	\$382,895.10
200 Personnel Services – Employee Benefits				
210 Group Insurance – Contracted Provider			51,934.05	51,934.05
220 Social Security Contributions			28,242.52	28,242.52
230 PSERS Retirement Contributions			57,491.19	57,491.19
250 Unemployment Compensation			906.56	906.56
260 Workers' Compensation			4,594.76	4,594.76
292 Health Savings Accounts			6,370.00	6,370.00
Total Personnel Services – Employee Benefits			\$149,539.08	\$149,539.08
300 Purchased Professional and Technical Services				
329 Professional Educational Services – Other			2,118.99	2,118.99
Total Purchased Professional and Technical Services			\$2,118.99	\$2,118.99
Total 1190 Federally-Funded Regular Programs			\$534,553.17	\$534,553.17

General Fund (10)

1200 Special Programs – Elementary / Secondary

	<u>Elementary</u>	<u>Secondary</u>	<u>Federal</u>	<u>Total</u>
100 Personnel Services – Salaries				
100 Personnel Services – Salaries	1,059,280.29	807,203.67	128,463.38	1,994,947.34
Total Personnel Services – Salaries	\$1,059,280.29	\$807,203.67	\$128,463.38	\$1,994,947.34
200 Personnel Services – Employee Benefits				
210 Group Insurance – Contracted Provider	294,457.49	153,494.37	61,373.02	509,324.88
220 Social Security Contributions	76,823.90	59,435.75	9,266.73	145,526.38
230 PSERS Retirement Contributions	325,238.65	254,326.33	19,288.57	598,853.55
250 Unemployment Compensation	4,258.00	1,980.88	511.60	6,750.48
260 Workers' Compensation	12,481.68	9,430.17	1,541.70	23,453.55
292 Health Savings Accounts	41,149.69	24,651.03	7,280.00	73,080.72
Total Personnel Services – Employee Benefits	\$754,409.41	\$503,318.53	\$99,261.62	\$1,356,989.56
300 Purchased Professional and Technical Services				
322 Professional Educational Services – Ius	8,237.30	51,792.58	6,866.00	66,895.88
323 Professional Educational Services – Other Educational Agencies		61,444.90		61,444.90
324 Professional Educational Services – Employee Training and Development Services	459.37	407.63		867.00
329 Professional Educational Services – Other	23,673.83	149,780.15		173,453.98
390 Other Purchased Professional and Technical Services	1,880.00			1,880.00
Total Purchased Professional and Technical Services	\$34,250.50	\$263,425.26	\$6,866.00	\$304,541.76
500 Other Purchased Services				
510 Student Transportation Services	8,110.26	6,938.18		15,048.44
561 Tuition To Other School Districts Within the State	3,932.33	87,466.07		91,398.40
562 Tuition To Pennsylvania Charter Schools	165,778.52	254,807.74	161,703.17	582,289.43
567 Tuition To Approved Private Schools (APS) and PA Chartered Schools for the Deaf and Blind	77,362.45	134,529.88		211,892.33
568 Tuition To Private Residential Rehabilitative Institutions (PRRI) [In-State] and Detention Centers	360.00	40,376.60		40,736.60
580 Travel	2,665.25	969.28		3,634.53
Total Other Purchased Services	\$258,208.81	\$525,087.75	\$161,703.17	\$944,999.73
600 Supplies				
610 General Supplies	11,171.39	6,951.54		18,122.93
640 Books and Periodicals	989.81	3,114.71		4,104.52
650 Supplies & Fees – Technology Related		39.99		39.99
Total Supplies	\$12,161.20	\$10,106.24		\$22,267.44
Total 1200 Special Programs – Elementary / Secondary	\$2,118,310.21	\$2,109,141.45	\$396,294.17	\$4,623,745.83

General Fund (10)

1210 Life Skills Support

	<u>Elementary</u>	<u>Secondary</u>	<u>Federal</u>	<u>Total</u>
100 Personnel Services – Salaries				
100 Personnel Services – Salaries	250,438.24	172,342.39	27,912.00	450,692.63
Total Personnel Services – Salaries	\$250,438.24	\$172,342.39	\$27,912.00	\$450,692.63
200 Personnel Services – Employee Benefits				
210 Group Insurance – Contracted Provider	87,890.70	32,663.00	5,929.92	126,483.62
220 Social Security Contributions	17,993.57	12,659.34	2,078.73	32,731.64
230 PSERS Retirement Contributions	75,206.58	55,794.54	4,190.57	135,191.69
250 Unemployment Compensation	1,426.01	701.76	161.97	2,289.74
260 Workers' Compensation	3,005.22	2,067.64	335.07	5,407.93
292 Health Savings Accounts	11,596.44	5,769.40	910.00	18,275.84
Total Personnel Services – Employee Benefits	\$197,118.52	\$109,655.68	\$13,606.26	\$320,380.46
300 Purchased Professional and Technical Services				
324 Professional Educational Services – Employee Training and Development Services	54.00			54.00
329 Professional Educational Services – Other		1,832.64		1,832.64
390 Other Purchased Professional and Technical Services	1,880.00			1,880.00
Total Purchased Professional and Technical Services	\$1,934.00	\$1,832.64		\$3,766.64
500 Other Purchased Services				
510 Student Transportation Services	1,864.58	1,237.19		3,101.77
580 Travel	796.96	105.52		902.48
Total Other Purchased Services	\$2,661.54	\$1,342.71		\$4,004.25
600 Supplies				
610 General Supplies	2,877.72	1,259.57		4,137.29
Total Supplies	\$2,877.72	\$1,259.57		\$4,137.29
Total 1210 Life Skills Support	\$455,030.02	\$286,432.99	\$41,518.26	\$782,981.27

General Fund (10)

1220 Sensory Support

	<u>Elementary</u>	<u>Secondary</u>	<u>Federal</u>	<u>Total</u>
100 Personnel Services – Salaries				
100 Personnel Services – Salaries	54,810.00	54,660.00		109,470.00
Total Personnel Services – Salaries	\$54,810.00	\$54,660.00		\$109,470.00
200 Personnel Services – Employee Benefits				
210 Group Insurance – Contracted Provider	17,468.18	17,021.50		34,489.68
220 Social Security Contributions	3,938.09	3,927.27		7,865.36
230 PSERS Retirement Contributions	16,459.55	16,414.16		32,873.71
250 Unemployment Compensation	97.66	97.36		195.02
260 Workers' Compensation	657.78	655.97		1,313.75
292 Health Savings Accounts	1,820.00	1,820.00		3,640.00
Total Personnel Services – Employee Benefits	\$40,441.26	\$39,936.26		\$80,377.52
500 Other Purchased Services				
580 Travel	93.42			93.42
Total Other Purchased Services	\$93.42			\$93.42
600 Supplies				
610 General Supplies	2,050.54	338.86		2,389.40
Total Supplies	\$2,050.54	\$338.86		\$2,389.40
Total 1220 Sensory Support	\$97,395.22	\$94,935.12		\$192,330.34

General Fund (10)

1230 Emotional Support

	<u>Elementary</u>	<u>Secondary</u>	<u>Federal</u>	<u>Total</u>
100 Personnel Services – Salaries				
100 Personnel Services – Salaries	209,351.44	100,776.58	7,579.00	317,707.02
Total Personnel Services – Salaries	\$209,351.44	\$100,776.58	\$7,579.00	\$317,707.02
200 Personnel Services – Employee Benefits				
210 Group Insurance – Contracted Provider	85,443.86	27,599.04	2,937.12	115,980.02
220 Social Security Contributions	14,792.65	7,305.19	551.00	22,648.84
230 PSERS Retirement Contributions	62,412.92	31,401.26	1,138.00	94,952.18
250 Unemployment Compensation	856.32	246.63	44.01	1,146.96
260 Workers' Compensation	2,480.08	1,209.03	91.09	3,780.20
292 Health Savings Accounts	7,280.00	4,449.18	455.00	12,184.18
Total Personnel Services – Employee Benefits	\$173,265.83	\$72,210.33	\$5,216.22	\$250,692.38
300 Purchased Professional and Technical Services				
323 Professional Educational Services – Other Educational Agencies		61,444.90		61,444.90
329 Professional Educational Services – Other	13,823.39	110,964.11		124,787.50
Total Purchased Professional and Technical Services	\$13,823.39	\$172,409.01		\$186,232.40
600 Supplies				
610 General Supplies	1,619.78	774.73		2,394.51
640 Books and Periodicals	223.74			223.74
Total Supplies	\$1,843.52	\$774.73		\$2,618.25
Total 1230 Emotional Support	\$398,284.18	\$346,170.65	\$12,795.22	\$757,250.05

LEA : 111312503 Huntingdon Area SD

Printed 12/21/2017 8:59:18 AM

Page - 10 of 22

General Fund (10)**1240 Academic Support**

	<u>Elementary</u>	<u>Secondary</u>	<u>Federal</u>	<u>Total</u>
100 Personnel Services – Salaries				
100 Personnel Services – Salaries	495,346.72	429,119.08	92,972.38	1,017,438.18
Total Personnel Services – Salaries	\$495,346.72	\$429,119.08	\$92,972.38	\$1,017,438.18
200 Personnel Services – Employee Benefits				
210 Group Insurance – Contracted Provider	95,074.50	67,630.70	52,505.98	215,211.18
220 Social Security Contributions	36,475.56	31,833.13	6,637.00	74,945.69
230 PSERS Retirement Contributions	156,344.54	135,609.68	13,960.00	305,914.22
250 Unemployment Compensation	1,785.81	922.02	305.62	3,013.45
260 Workers' Compensation	5,836.10	4,985.16	1,115.54	11,936.80
292 Health Savings Accounts	19,543.25	11,686.70	5,915.00	37,144.95
Total Personnel Services – Employee Benefits	\$315,059.76	\$252,667.39	\$80,439.14	\$648,166.29
300 Purchased Professional and Technical Services				
329 Professional Educational Services – Other	9,850.44	36,821.40		46,671.84
Total Purchased Professional and Technical Services	\$9,850.44	\$36,821.40		\$46,671.84
500 Other Purchased Services				
510 Student Transportation Services		3,942.63		3,942.63
580 Travel	513.70	187.01		700.71
Total Other Purchased Services	\$513.70	\$4,129.64		\$4,643.34
600 Supplies				
610 General Supplies	3,855.04	4,583.08		8,438.12
640 Books and Periodicals	766.07	3,114.71		3,880.78
650 Supplies & Fees – Technology Related		39.99		39.99
Total Supplies	\$4,621.11	\$7,737.78		\$12,358.89
Total 1240 Academic Support	\$825,391.73	\$730,475.29	\$173,411.52	\$1,729,278.54

General Fund (10)

	<u>Elementary</u>	<u>Secondary</u>	<u>Federal</u>	<u>Total</u>
1241 Learning Support – Public				
100 Personnel Services – Salaries				
100 Personnel Services – Salaries	435,762.53	338,183.02	92,972.38	866,917.93
Total Personnel Services – Salaries	\$435,762.53	\$338,183.02	\$92,972.38	\$866,917.93
200 Personnel Services – Employee Benefits				
210 Group Insurance – Contracted Provider	90,086.88	57,239.66	52,505.98	199,832.52
220 Social Security Contributions	31,978.99	25,039.36	6,637.00	63,655.35
230 PSERS Retirement Contributions	138,451.47	108,275.28	13,960.00	260,686.75
250 Unemployment Compensation	1,696.27	951.12	305.62	2,953.01
260 Workers' Compensation	5,229.12	4,058.79	1,115.54	10,403.45
292 Health Savings Accounts	18,942.65	10,467.30	5,915.00	35,324.95
Total Personnel Services – Employee Benefits	\$286,385.38	\$206,031.51	\$80,439.14	\$572,856.03
300 Purchased Professional and Technical Services				
329 Professional Educational Services – Other	9,220.47	34,015.17		43,235.64
Total Purchased Professional and Technical Services	\$9,220.47	\$34,015.17		\$43,235.64
500 Other Purchased Services				
580 Travel	499.73			499.73
Total Other Purchased Services	\$499.73			\$499.73
600 Supplies				
610 General Supplies	2,664.27	1,574.07		4,238.34
640 Books and Periodicals	766.07	3,114.71		3,880.78
650 Supplies & Fees – Technology Related		39.99		39.99
Total Supplies	\$3,430.34	\$4,728.77		\$8,159.11
Total 1241 Learning Support – Public	\$735,298.45	\$582,958.47	\$173,411.52	\$1,491,668.44

General Fund (10)

1243 Gifted Support

	<u>Elementary</u>	<u>Secondary</u>	<u>Federal</u>	<u>Total</u>
100 Personnel Services – Salaries				
100 Personnel Services – Salaries	59,584.19	90,936.06		150,520.25
Total Personnel Services – Salaries	\$59,584.19	\$90,936.06		\$150,520.25
200 Personnel Services – Employee Benefits				
210 Group Insurance – Contracted Provider	4,987.62	10,391.04		15,378.66
220 Social Security Contributions	4,496.57	6,793.77		11,290.34
230 PSERS Retirement Contributions	17,893.07	27,334.40		45,227.47
250 Unemployment Compensation	89.54	(29.10)		60.44
260 Workers' Compensation	606.98	926.37		1,533.35
292 Health Savings Accounts	600.60	1,219.40		1,820.00
Total Personnel Services – Employee Benefits	\$28,674.38	\$46,635.88		\$75,310.26
300 Purchased Professional and Technical Services				
329 Professional Educational Services – Other	629.97	2,806.23		3,436.20
Total Purchased Professional and Technical Services	\$629.97	\$2,806.23		\$3,436.20
500 Other Purchased Services				
510 Student Transportation Services		3,942.63		3,942.63
580 Travel	13.97	187.01		200.98
Total Other Purchased Services	\$13.97	\$4,129.64		\$4,143.61
600 Supplies				
610 General Supplies	1,190.77	3,009.01		4,199.78
Total Supplies	\$1,190.77	\$3,009.01		\$4,199.78
Total 1243 Gifted Support	\$90,093.28	\$147,516.82		\$237,610.10

General Fund (10)

1260 Physical Support

	<u>Elementary</u>	<u>Secondary</u>	<u>Federal</u>	<u>Total</u>
100 Personnel Services – Salaries				
100 Personnel Services – Salaries	30,770.13	38,309.87		69,080.00
Total Personnel Services – Salaries	\$30,770.13	\$38,309.87		\$69,080.00
200 Personnel Services – Employee Benefits				
210 Group Insurance – Contracted Provider	8,580.25	8,580.13		17,160.38
220 Social Security Contributions	2,236.48	2,813.17		5,049.65
230 PSERS Retirement Contributions	9,240.37	11,504.43		20,744.80
250 Unemployment Compensation	48.77	(24.48)		24.29
260 Workers' Compensation	313.44	390.17		703.61
292 Health Savings Accounts	910.00	910.00		1,820.00
Total Personnel Services – Employee Benefits	\$21,329.31	\$24,173.42		\$45,502.73
500 Other Purchased Services				
580 Travel	407.00			407.00
Total Other Purchased Services	\$407.00			\$407.00
600 Supplies				
610 General Supplies	801.64	14.12		815.76
Total Supplies	\$801.64	\$14.12		\$815.76
Total 1260 Physical Support	\$53,308.08	\$62,497.41		\$115,805.49

General Fund (10)

1290 Special Programs - Other Support

	<u>Elementary</u>	<u>Secondary</u>	<u>Federal</u>	<u>Total</u>
100 Personnel Services – Salaries				
100 Personnel Services – Salaries	18,563.76	11,995.75		30,559.51
Total Personnel Services – Salaries	\$18,563.76	\$11,995.75		\$30,559.51
200 Personnel Services – Employee Benefits				
220 Social Security Contributions	1,387.55	897.65		2,285.20
230 PSERS Retirement Contributions	5,574.69	3,602.26		9,176.95
250 Unemployment Compensation	43.43	37.59		81.02
260 Workers' Compensation	189.06	122.20		311.26
292 Health Savings Accounts		15.75		15.75
Total Personnel Services – Employee Benefits	\$7,194.73	\$4,675.45		\$11,870.18
300 Purchased Professional and Technical Services				
322 Professional Educational Services – lus	8,237.30	51,792.58	6,866.00	66,895.88
324 Professional Educational Services – Employee Training and Development Services	405.37	407.63		813.00
329 Professional Educational Services – Other		162.00		162.00
Total Purchased Professional and Technical Services	\$8,642.67	\$52,362.21	\$6,866.00	\$67,870.88
500 Other Purchased Services				
510 Student Transportation Services	6,245.68	1,758.36		8,004.04
561 Tuition To Other School Districts Within the State	3,932.33	87,466.07		91,398.40
562 Tuition To Pennsylvania Charter Schools	165,778.52	254,807.74	161,703.17	582,289.43
567 Tuition To Approved Private Schools (APS) and PA Chartered Schools for the Deaf and Blind	77,362.45	134,529.88		211,892.33
568 Tuition To Private Residential Rehabilitative Institutions (PRRI) [In-State] and Detention Centers	360.00	40,376.60		40,736.60
580 Travel	854.17	676.75		1,530.92
Total Other Purchased Services	\$254,533.15	\$519,615.40	\$161,703.17	\$935,851.72
600 Supplies				
610 General Supplies	(33.33)	(18.82)		(52.15)
Total Supplies	(\$33.33)	(\$18.82)		(\$52.15)
Total 1290 Special Programs - Other Support	\$288,900.98	\$588,629.99	\$168,569.17	\$1,046,100.14

General Fund (10)

1300 Vocational Education

	<u>Elementary</u>	<u>Secondary</u>	<u>Federal</u>	<u>Total</u>
100 Personnel Services – Salaries				
100 Personnel Services – Salaries		176,122.27		176,122.27
Total Personnel Services – Salaries		\$176,122.27		\$176,122.27
200 Personnel Services – Employee Benefits				
210 Group Insurance – Contracted Provider		32,905.21		32,905.21
220 Social Security Contributions		12,916.60		12,916.60
230 PSERS Retirement Contributions		52,889.60		52,889.60
250 Unemployment Compensation		366.58		366.58
260 Workers' Compensation		1,794.04		1,794.04
292 Health Savings Accounts		3,931.14		3,931.14
Total Personnel Services – Employee Benefits		\$104,803.17		\$104,803.17
300 Purchased Professional and Technical Services				
329 Professional Educational Services – Other		3,321.66		3,321.66
Total Purchased Professional and Technical Services		\$3,321.66		\$3,321.66
500 Other Purchased Services				
564 Tuition To Career and Technology Centers		637,392.00		637,392.00
Total Other Purchased Services		\$637,392.00		\$637,392.00
600 Supplies				
610 General Supplies		10,610.74		10,610.74
640 Books and Periodicals		22.00		22.00
Total Supplies		\$10,632.74		\$10,632.74
Total 1300 Vocational Education		\$932,271.84		\$932,271.84

General Fund (10)

1400 Other Instructional Programs – Elementary / Secondary

	<u>Elementary</u>	<u>Secondary</u>	<u>Federal</u>	<u>Total</u>
100 Personnel Services – Salaries				
100 Personnel Services – Salaries	10,138.53	55,394.05		65,532.58
Total Personnel Services – Salaries	\$10,138.53	\$55,394.05		\$65,532.58
200 Personnel Services – Employee Benefits				
210 Group Insurance – Contracted Provider	171.49	171.49		342.98
220 Social Security Contributions	760.06	4,118.24		4,878.30
230 PSERS Retirement Contributions	3,044.70	16,608.54		19,653.24
250 Unemployment Compensation	50.43	120.95		171.38
260 Workers' Compensation	104.22	579.17		683.39
292 Health Savings Accounts		578.14		578.14
Total Personnel Services – Employee Benefits	\$4,130.90	\$22,176.53		\$26,307.43
300 Purchased Professional and Technical Services				
323 Professional Educational Services – Other Educational Agencies		119,272.00		119,272.00
Total Purchased Professional and Technical Services		\$119,272.00		\$119,272.00
400 Purchased Property Services				
430 Repairs and Maintenance Services		1,213.73		1,213.73
Total Purchased Property Services		\$1,213.73		\$1,213.73
500 Other Purchased Services				
580 Travel	145.70	438.67		584.37
Total Other Purchased Services	\$145.70	\$438.67		\$584.37
600 Supplies				
610 General Supplies	78.62	59.94		138.56
620 Energy		385.48		385.48
Total Supplies	\$78.62	\$445.42		\$524.04
Total 1400 Other Instructional Programs – Elementary / Secondary	\$14,493.75	\$198,940.40		\$213,434.15

General Fund (10)

1410 Drivers' Education

100 Personnel Services – Salaries

	<u>Elementary</u>	<u>Secondary</u>	<u>Federal</u>	<u>Total</u>
100 Personnel Services – Salaries		2,475.00		2,475.00
Total Personnel Services – Salaries		\$2,475.00		\$2,475.00

200 Personnel Services – Employee Benefits

220 Social Security Contributions		189.34		189.34
230 PSERS Retirement Contributions		743.25		743.25
250 Unemployment Compensation		24.75		24.75
260 Workers' Compensation		29.70		29.70
Total Personnel Services – Employee Benefits		\$987.04		\$987.04

400 Purchased Property Services

430 Repairs and Maintenance Services		1,213.73		1,213.73
Total Purchased Property Services		\$1,213.73		\$1,213.73

600 Supplies

620 Energy		385.48		385.48
Total Supplies		\$385.48		\$385.48

Total 1410 Drivers' Education

Total 1410 Drivers' Education		\$5,061.25		\$5,061.25
--------------------------------------	--	-------------------	--	-------------------

General Fund (10)

1430 Homebound Instruction

	<u>Elementary</u>	<u>Secondary</u>	<u>Federal</u>	<u>Total</u>
100 Personnel Services – Salaries				
100 Personnel Services – Salaries	475.00	12,287.25		12,762.25
Total Personnel Services – Salaries	\$475.00	\$12,287.25		\$12,762.25
200 Personnel Services – Employee Benefits				
220 Social Security Contributions	34.97	912.48		947.45
230 PSERS Retirement Contributions	142.64	3,689.86		3,832.50
250 Unemployment Compensation		19.97		19.97
260 Workers' Compensation	5.70	125.24		130.94
292 Health Savings Accounts		391.31		391.31
Total Personnel Services – Employee Benefits	\$183.31	\$5,138.86		\$5,322.17
500 Other Purchased Services				
580 Travel	145.70	438.67		584.37
Total Other Purchased Services	\$145.70	\$438.67		\$584.37
Total 1430 Homebound Instruction	\$804.01	\$17,864.78		\$18,668.79

General Fund (10)

1440 Alternative Regular Education Programs

	<u>Elementary</u>	<u>Secondary</u>	<u>Federal</u>	<u>Total</u>
100 Personnel Services – Salaries				
100 Personnel Services – Salaries	9,663.53	9,330.30		18,993.83
Total Personnel Services – Salaries	\$9,663.53	\$9,330.30		\$18,993.83
200 Personnel Services – Employee Benefits				
210 Group Insurance – Contracted Provider	171.49	171.49		342.98
220 Social Security Contributions	725.09	699.44		1,424.53
230 PSERS Retirement Contributions	2,902.06	2,801.76		5,703.82
250 Unemployment Compensation	50.43	47.10		97.53
260 Workers' Compensation	98.52	94.89		193.41
Total Personnel Services – Employee Benefits	\$3,947.59	\$3,814.68		\$7,762.27
300 Purchased Professional and Technical Services				
323 Professional Educational Services – Other Educational Agencies		119,272.00		119,272.00
Total Purchased Professional and Technical Services		\$119,272.00		\$119,272.00
Total 1440 Alternative Regular Education Programs	\$13,611.12	\$132,416.98		\$146,028.10

General Fund (10)

1442 Alternative Education Programs

100 Personnel Services – Salaries

	<u>Elementary</u>	<u>Secondary</u>	<u>Federal</u>	<u>Total</u>
100 Personnel Services – Salaries	9,663.53	9,330.30		18,993.83
Total Personnel Services – Salaries	\$9,663.53	\$9,330.30		\$18,993.83

200 Personnel Services – Employee Benefits

210 Group Insurance – Contracted Provider	171.49	171.49		342.98
220 Social Security Contributions	725.09	699.44		1,424.53
230 PSERS Retirement Contributions	2,902.06	2,801.76		5,703.82
250 Unemployment Compensation	50.43	47.10		97.53
260 Workers' Compensation	98.52	94.89		193.41
Total Personnel Services – Employee Benefits	\$3,947.59	\$3,814.68		\$7,762.27

300 Purchased Professional and Technical Services

323 Professional Educational Services – Other Educational Agencies		119,272.00		119,272.00
Total Purchased Professional and Technical Services		\$119,272.00		\$119,272.00
Total 1442 Alternative Education Programs	\$13,611.12	\$132,416.98		\$146,028.10

General Fund (10)

1450 Instructional Programs Outside the Established School Day	<u>Elementary</u>	<u>Secondary</u>	<u>Federal</u>	<u>Total</u>
100 Personnel Services – Salaries				
100 Personnel Services – Salaries		5,838.75		5,838.75
Total Personnel Services – Salaries		\$5,838.75		\$5,838.75
200 Personnel Services – Employee Benefits				
220 Social Security Contributions		429.85		429.85
230 PSERS Retirement Contributions		1,753.40		1,753.40
250 Unemployment Compensation		5.85		5.85
260 Workers' Compensation		70.05		70.05
Total Personnel Services – Employee Benefits		\$2,259.15		\$2,259.15
600 Supplies				
610 General Supplies	78.62	59.94		138.56
Total Supplies	\$78.62	\$59.94		\$138.56
Total 1450 Instructional Programs Outside the Established School Day	\$78.62	\$8,157.84		\$8,236.46

General Fund (10)

1490 Additional Other Instructional Programs

100 Personnel Services – Salaries

	<u>Elementary</u>	<u>Secondary</u>	<u>Federal</u>	<u>Total</u>
100 Personnel Services – Salaries		25,462.75		25,462.75
Total Personnel Services – Salaries		\$25,462.75		\$25,462.75

200 Personnel Services – Employee Benefits

220 Social Security Contributions		1,887.13		1,887.13
230 PSERS Retirement Contributions		7,620.27		7,620.27
250 Unemployment Compensation		23.28		23.28
260 Workers' Compensation		259.29		259.29
292 Health Savings Accounts		186.83		186.83

Total Personnel Services – Employee Benefits		\$9,976.80		\$9,976.80
---	--	-------------------	--	-------------------

Total 1490 Additional Other Instructional Programs		\$35,439.55		\$35,439.55
---	--	--------------------	--	--------------------

General Fund (10)

2000 Support Services

Total

100 Personnel Services – Salaries

100 Personnel Services – Salaries 3,179,497.78

Total Personnel Services – Salaries \$3,179,497.78

200 Personnel Services – Employee Benefits

210 Group Insurance – Contracted Provider 516,566.81

220 Social Security Contributions 235,732.18

230 PSERS Retirement Contributions 931,899.36

240 Tuition Reimbursement 102,149.25

250 Unemployment Compensation (646.42)

260 Workers' Compensation 32,348.26

280 Other Post-Employment Benefits (OPEB) 3,392.12

291 Other Retirement Plans 31,569.10

292 Health Savings Accounts 68,973.16

Total Personnel Services – Employee Benefits \$1,921,983.82

300 Purchased Professional and Technical Services

322 Professional Educational Services – Ius 2,752.67

324 Professional Educational Services – Employee Training and Development Services 7,203.48

329 Professional Educational Services – Other 21,862.61

330 Other Professional Services 201,355.04

340 Technical Services 4,500.00

350 Security / Safety Services 46,590.87

Total Purchased Professional and Technical Services \$284,264.67

400 Purchased Property Services

410 Cleaning Services 38,695.44

420 Utility Services 77,231.30

430 Repairs and Maintenance Services 110,939.68

440 Rentals 27,795.11

460 Extermination Services 4,156.00

Total Purchased Property Services \$258,817.53

500 Other Purchased Services

511 Student Transportation Services from Another LEA Within the State 2,436.31

513 Contracted Carriers 1,894,394.93

516 Student Transportation Services From the IU 22,947.12

520 Insurance – General 14,968.00

522 Automotive Liability Insurance 4,059.00

523 General Property and Liability Insurance 94,269.00

530 Communications 35,073.53

549 Other Advertising/Public Relations 14,887.47

580 Travel 27,568.50

Total Other Purchased Services \$2,110,603.86

600 Supplies

610 General Supplies 204,156.00

620 Energy 529,305.01

630 Food 3,468.85

LEA : 111312503 Huntingdon Area SD

Printed 12/21/2017 8:59:22 AM

General Fund (10)

2000 Support Services

Total

600 Supplies

640 Books and Periodicals	18,661.20
650 Supplies & Fees – Technology Related	208,958.76

Total Supplies	\$964,549.82
-----------------------	---------------------

700 Property

752 Capital Equipment – Original and Additional	18,928.03
756 Capitalized Technology Hardware and Equipment – Original	103,265.84
758 Capitalized Technology Software - Original	58,722.85
766 Capitalized Technology Hardware and Equipment – Replacement	120,707.21

Total Property	\$301,623.93
-----------------------	---------------------

800 Other Objects

810 Dues and Fees	166,579.00
890 Miscellaneous Expenditures	4,659.43

Total Other Objects	\$171,238.43
----------------------------	---------------------

Total 2000 Support Services	\$9,192,579.84
------------------------------------	-----------------------

General Fund (10)

2100 Support Services – Students

	<u>Elementary</u>	<u>Secondary</u>	<u>Federal</u>	<u>Total</u>
100 Personnel Services – Salaries				
100 Personnel Services – Salaries	251,714.01	324,534.62		576,248.63
Total Personnel Services – Salaries	\$251,714.01	\$324,534.62		\$576,248.63
200 Personnel Services – Employee Benefits				
210 Group Insurance – Contracted Provider	32,667.03	40,500.63		73,167.66
220 Social Security Contributions	18,652.81	24,112.50		42,765.31
230 PSERS Retirement Contributions	75,244.70	97,232.30		172,477.00
250 Unemployment Compensation	(48.24)	108.75		60.51
260 Workers' Compensation	2,557.73	3,300.80		5,858.53
291 Other Retirement Plans	11,097.05	11,097.05		22,194.10
292 Health Savings Accounts	5,915.00	5,005.00		10,920.00
Total Personnel Services – Employee Benefits	\$146,086.08	\$181,357.03		\$327,443.11
300 Purchased Professional and Technical Services				
329 Professional Educational Services – Other		14,400.00		14,400.00
330 Other Professional Services	4,510.00			4,510.00
Total Purchased Professional and Technical Services	\$4,510.00	\$14,400.00		\$18,910.00
500 Other Purchased Services				
580 Travel	987.72	575.00		3,307.80
Total Other Purchased Services	\$987.72	\$575.00		\$3,307.80
600 Supplies				
610 General Supplies	3,558.05	5,142.48		8,700.53
640 Books and Periodicals	347.74	1,886.83		2,234.57
650 Supplies & Fees – Technology Related	6,649.00	6,649.00		13,298.00
Total Supplies	\$10,554.79	\$13,678.31		\$24,233.10
800 Other Objects				
810 Dues and Fees				175.00
Total Other Objects				\$175.00
Total 2100 Support Services – Students	\$413,852.60	\$534,544.96		\$950,317.64

General Fund (10)

2110 Supervision of Student Services

	<u>Elementary</u>	<u>Secondary</u>	<u>Federal</u>	<u>Total</u>
100 Personnel Services – Salaries				
100 Personnel Services – Salaries	103,953.03	76,166.73		180,119.76
Total Personnel Services – Salaries	\$103,953.03	\$76,166.73		\$180,119.76
200 Personnel Services – Employee Benefits				
210 Group Insurance – Contracted Provider	16,128.03	7,765.93		23,893.96
220 Social Security Contributions	7,555.62	5,562.93		13,118.55
230 PSERS Retirement Contributions	30,871.74	22,647.51		53,519.25
250 Unemployment Compensation	(38.71)	97.48		58.77
260 Workers' Compensation	1,052.49	770.82		1,823.31
291 Other Retirement Plans	3,037.50	3,037.50		6,075.00
292 Health Savings Accounts	2,730.00	910.00		3,640.00
Total Personnel Services – Employee Benefits	\$61,336.67	\$40,792.17		\$102,128.84
500 Other Purchased Services				
580 Travel	212.50	212.50		425.00
Total Other Purchased Services	\$212.50	\$212.50		\$425.00
600 Supplies				
610 General Supplies	1,211.54	305.70		1,517.24
640 Books and Periodicals	155.00	198.84		353.84
650 Supplies & Fees – Technology Related	6,649.00	6,649.00		13,298.00
Total Supplies	\$8,015.54	\$7,153.54		\$15,169.08
Total 2110 Supervision of Student Services	\$173,517.74	\$124,324.94		\$297,842.68

General Fund (10)

	<u>Elementary</u>	<u>Secondary</u>	<u>Federal</u>	<u>Total</u>
2111 Supervision of Student Services – Head of Component				
100 Personnel Services – Salaries				
100 Personnel Services – Salaries	103,953.03	76,166.73		180,119.76
Total Personnel Services – Salaries	\$103,953.03	\$76,166.73		\$180,119.76
200 Personnel Services – Employee Benefits				
210 Group Insurance – Contracted Provider	16,128.03	7,765.93		23,893.96
220 Social Security Contributions	7,555.62	5,562.93		13,118.55
230 PSERS Retirement Contributions	30,871.74	22,647.51		53,519.25
250 Unemployment Compensation	(38.71)	97.48		58.77
260 Workers' Compensation	1,052.49	770.82		1,823.31
291 Other Retirement Plans	3,037.50	3,037.50		6,075.00
292 Health Savings Accounts	2,730.00	910.00		3,640.00
Total Personnel Services – Employee Benefits	\$61,336.67	\$40,792.17		\$102,128.84
500 Other Purchased Services				
580 Travel	212.50	212.50		425.00
Total Other Purchased Services	\$212.50	\$212.50		\$425.00
600 Supplies				
610 General Supplies	1,211.54	305.70		1,517.24
640 Books and Periodicals	155.00	198.84		353.84
650 Supplies & Fees – Technology Related	6,649.00	6,649.00		13,298.00
Total Supplies	\$8,015.54	\$7,153.54		\$15,169.08
Total 2111 Supervision of Student Services – Head of Component	\$173,517.74	\$124,324.94		\$297,842.68

General Fund (10)

2120 Guidance Services

	<u>Elementary</u>	<u>Secondary</u>	<u>Federal</u>	<u>Total</u>
100 Personnel Services – Salaries				
100 Personnel Services – Salaries	87,200.48	187,807.41		275,007.89
Total Personnel Services – Salaries	\$87,200.48	\$187,807.41		\$275,007.89
200 Personnel Services – Employee Benefits				
210 Group Insurance – Contracted Provider	11,413.07	27,608.81		39,021.88
220 Social Security Contributions	6,512.49	13,965.32		20,477.81
230 PSERS Retirement Contributions	26,186.41	56,398.67		82,585.08
250 Unemployment Compensation	19.25	40.17		59.42
260 Workers' Compensation	888.38	1,913.12		2,801.50
292 Health Savings Accounts	1,820.00	2,730.00		4,550.00
Total Personnel Services – Employee Benefits	\$46,839.60	\$102,656.09		\$149,495.69
300 Purchased Professional and Technical Services				
329 Professional Educational Services – Other		14,400.00		14,400.00
330 Other Professional Services	4,510.00			4,510.00
Total Purchased Professional and Technical Services	\$4,510.00	\$14,400.00		\$18,910.00
500 Other Purchased Services				
580 Travel	310.00			310.00
Total Other Purchased Services	\$310.00			\$310.00
600 Supplies				
610 General Supplies	94.73	2,460.52		2,555.25
640 Books and Periodicals	192.74	1,687.99		1,880.73
Total Supplies	\$287.47	\$4,148.51		\$4,435.98
Total 2120 Guidance Services	\$139,147.55	\$309,012.01		\$448,159.56

General Fund (10)

2140 Psychological Services

	<u>Elementary</u>	<u>Secondary</u>	<u>Federal</u>	<u>Total</u>
100 Personnel Services – Salaries				
100 Personnel Services – Salaries	60,560.50	60,560.48		121,120.98
Total Personnel Services – Salaries	\$60,560.50	\$60,560.48		\$121,120.98
200 Personnel Services – Employee Benefits				
210 Group Insurance – Contracted Provider	5,125.93	5,125.89		10,251.82
220 Social Security Contributions	4,584.70	4,584.25		9,168.95
230 PSERS Retirement Contributions	18,186.55	18,186.12		36,372.67
250 Unemployment Compensation	(28.78)	(28.90)		(57.68)
260 Workers' Compensation	616.86	616.86		1,233.72
291 Other Retirement Plans	8,059.55	8,059.55		16,119.10
292 Health Savings Accounts	1,365.00	1,365.00		2,730.00
Total Personnel Services – Employee Benefits	\$37,909.81	\$37,908.77		\$75,818.58
500 Other Purchased Services				
580 Travel	465.22	362.50		827.72
Total Other Purchased Services	\$465.22	\$362.50		\$827.72
600 Supplies				
610 General Supplies	2,251.78	2,376.26		4,628.04
Total Supplies	\$2,251.78	\$2,376.26		\$4,628.04
Total 2140 Psychological Services	\$101,187.31	\$101,208.01		\$202,395.32

General Fund (10)

2170 Student Accounting Services

Elementary

Secondary

Federal

Total

500 Other Purchased Services

580 Travel 1,745.08

Total Other Purchased Services

\$1,745.08

800 Other Objects

810 Dues and Fees 175.00

Total Other Objects

\$175.00

Total 2170 Student Accounting Services

\$1,920.08

General Fund (10)

2200 Support Services – Instructional Staff

	<u>Elementary</u>	<u>Secondary</u>	<u>Federal</u>	<u>Total</u>
100 Personnel Services – Salaries				
100 Personnel Services – Salaries	283,029.18	249,600.83		532,630.01
Total Personnel Services – Salaries	\$283,029.18	\$249,600.83		\$532,630.01
200 Personnel Services – Employee Benefits				
210 Group Insurance – Contracted Provider	27,589.80	40,008.49		67,598.29
220 Social Security Contributions	21,151.31	18,430.83		39,582.14
230 PSERS Retirement Contributions	83,652.02	73,706.91		157,358.93
240 Tuition Reimbursement	65,395.08	35,872.17		101,267.25
250 Unemployment Compensation	173.53	(16.32)		157.21
260 Workers' Compensation	2,878.76	2,538.96		5,417.72
291 Other Retirement Plans	1,725.00	1,725.00		3,450.00
292 Health Savings Accounts	3,231.88	4,771.28		8,003.16
Total Personnel Services – Employee Benefits	\$205,797.38	\$177,037.32		\$382,834.70
300 Purchased Professional and Technical Services				
322 Professional Educational Services – Ius	1,211.18	1,541.49		2,752.67
324 Professional Educational Services – Employee Training and Development Services	3,524.24	3,524.24		7,048.48
329 Professional Educational Services – Other	3,874.48	3,588.13		7,462.61
Total Purchased Professional and Technical Services	\$8,609.90	\$8,653.86		\$17,263.76
400 Purchased Property Services				
430 Repairs and Maintenance Services	639.16	1,174.23		1,813.39
Total Purchased Property Services	\$639.16	\$1,174.23		\$1,813.39
500 Other Purchased Services				
530 Communications	75.52	74.95		150.47
580 Travel	4,891.01	5,947.70		10,838.71
Total Other Purchased Services	\$4,966.53	\$6,022.65		\$10,989.18
600 Supplies				
610 General Supplies	1,388.30	7,122.08		8,510.38
640 Books and Periodicals	6,094.43	9,022.29		15,116.72
650 Supplies & Fees – Technology Related	63,071.70	68,099.18		131,170.88
Total Supplies	\$70,554.43	\$84,243.55		\$154,797.98
700 Property				
756 Capitalized Technology Hardware and Equipment – Original	56,810.49	46,455.35		103,265.84
758 Capitalized Technology Software - Original		58,722.85		58,722.85
766 Capitalized Technology Hardware and Equipment – Replacement	107,407.80	13,299.41		120,707.21
Total Property	\$164,218.29	\$118,477.61		\$282,695.90
Total 2200 Support Services – Instructional Staff	\$737,814.87	\$645,210.05		\$1,383,024.92

General Fund (10)

2220 Technology Support Services

	<u>Elementary</u>	<u>Secondary</u>	<u>Federal</u>	<u>Total</u>
100 Personnel Services – Salaries				
100 Personnel Services – Salaries	59,604.51	59,397.69		119,002.20
Total Personnel Services – Salaries	\$59,604.51	\$59,397.69		\$119,002.20
200 Personnel Services – Employee Benefits				
210 Group Insurance – Contracted Provider	11,495.84	11,495.72		22,991.56
220 Social Security Contributions	4,438.18	4,422.43		8,860.61
230 PSERS Retirement Contributions	16,859.35	16,796.82		33,656.17
250 Unemployment Compensation	(27.79)	(29.13)		(56.92)
260 Workers' Compensation	603.73	601.33		1,205.06
291 Other Retirement Plans	750.00	750.00		1,500.00
292 Health Savings Accounts	1,411.88	1,318.12		2,730.00
Total Personnel Services – Employee Benefits	\$35,531.19	\$35,355.29		\$70,886.48
400 Purchased Property Services				
430 Repairs and Maintenance Services	639.16	1,174.23		1,813.39
Total Purchased Property Services	\$639.16	\$1,174.23		\$1,813.39
500 Other Purchased Services				
530 Communications	75.52	74.95		150.47
Total Other Purchased Services	\$75.52	\$74.95		\$150.47
600 Supplies				
650 Supplies & Fees – Technology Related	58,395.34	60,694.15		119,089.49
Total Supplies	\$58,395.34	\$60,694.15		\$119,089.49
700 Property				
756 Capitalized Technology Hardware and Equipment – Original	56,810.49	46,455.35		103,265.84
758 Capitalized Technology Software - Original		58,722.85		58,722.85
766 Capitalized Technology Hardware and Equipment – Replacement	107,407.80	13,299.41		120,707.21
Total Property	\$164,218.29	\$118,477.61		\$282,695.90
Total 2220 Technology Support Services	\$318,464.01	\$275,173.92		\$593,637.93

General Fund (10)

2250 School Library Services

	<u>Elementary</u>	<u>Secondary</u>	<u>Federal</u>	<u>Total</u>
100 Personnel Services – Salaries				
100 Personnel Services – Salaries	83,806.56	46,220.00		130,026.56
Total Personnel Services – Salaries	\$83,806.56	\$46,220.00		\$130,026.56
200 Personnel Services – Employee Benefits				
210 Group Insurance – Contracted Provider	4,741.32	17,160.37		21,901.69
220 Social Security Contributions	6,331.45	3,301.38		9,632.83
230 PSERS Retirement Contributions	25,167.20	13,879.78		39,046.98
250 Unemployment Compensation	193.84	97.52		291.36
260 Workers' Compensation	853.67	470.72		1,324.39
292 Health Savings Accounts	910.00	1,820.00		2,730.00
Total Personnel Services – Employee Benefits	\$38,197.48	\$36,729.77		\$74,927.25
300 Purchased Professional and Technical Services				
322 Professional Educational Services – Ius	1,211.18	1,541.49		2,752.67
329 Professional Educational Services – Other	1,374.48	1,088.13		2,462.61
Total Purchased Professional and Technical Services	\$2,585.66	\$2,629.62		\$5,215.28
600 Supplies				
610 General Supplies	1,257.80	420.56		1,678.36
640 Books and Periodicals	2,389.13	6,958.76		9,347.89
650 Supplies & Fees – Technology Related	4,676.36	7,405.03		12,081.39
Total Supplies	\$8,323.29	\$14,784.35		\$23,107.64
Total 2250 School Library Services	\$132,912.99	\$100,363.74		\$233,276.73

General Fund (10)

2260 Instruction and Curriculum Development Services

	<u>Elementary</u>	<u>Secondary</u>	<u>Federal</u>	<u>Total</u>
100 Personnel Services – Salaries				
100 Personnel Services – Salaries	107,277.66	113,408.14		220,685.80
Total Personnel Services – Salaries	\$107,277.66	\$113,408.14		\$220,685.80
200 Personnel Services – Employee Benefits				
210 Group Insurance – Contracted Provider	11,352.64	11,352.40		22,705.04
220 Social Security Contributions	7,940.18	8,383.80		16,323.98
230 PSERS Retirement Contributions	31,913.63	33,831.09		65,744.72
250 Unemployment Compensation	(31.77)	(30.96)		(62.73)
260 Workers' Compensation	1,091.15	1,154.78		2,245.93
291 Other Retirement Plans	975.00	975.00		1,950.00
292 Health Savings Accounts	910.00	1,633.16		2,543.16
Total Personnel Services – Employee Benefits	\$54,150.83	\$57,299.27		\$111,450.10
300 Purchased Professional and Technical Services				
329 Professional Educational Services – Other	2,500.00	2,500.00		5,000.00
Total Purchased Professional and Technical Services	\$2,500.00	\$2,500.00		\$5,000.00
500 Other Purchased Services				
580 Travel	1,376.80	112.50		1,489.30
Total Other Purchased Services	\$1,376.80	\$112.50		\$1,489.30
600 Supplies				
610 General Supplies		6,571.02		6,571.02
640 Books and Periodicals	3,705.30	2,063.53		5,768.83
Total Supplies	\$3,705.30	\$8,634.55		\$12,339.85
Total 2260 Instruction and Curriculum Development Services	\$169,010.59	\$181,954.46		\$350,965.05

General Fund (10)

	<u>Elementary</u>	<u>Secondary</u>	<u>Federal</u>	<u>Total</u>
2270 Instructional Staff Professional Development Services				
100 Personnel Services – Salaries				
100 Personnel Services – Salaries	32,340.45	30,575.00		62,915.45
Total Personnel Services – Salaries	\$32,340.45	\$30,575.00		\$62,915.45
200 Personnel Services – Employee Benefits				
220 Social Security Contributions	2,441.50	2,323.22		4,764.72
230 PSERS Retirement Contributions	9,711.84	9,199.22		18,911.06
240 Tuition Reimbursement	65,395.08	35,872.17		101,267.25
250 Unemployment Compensation	39.25	(53.75)		(14.50)
260 Workers' Compensation	330.21	312.13		642.34
Total Personnel Services – Employee Benefits	\$77,917.88	\$47,652.99		\$125,570.87
300 Purchased Professional and Technical Services				
324 Professional Educational Services – Employee Training and Development Services	3,524.24	3,524.24		7,048.48
Total Purchased Professional and Technical Services	\$3,524.24	\$3,524.24		\$7,048.48
500 Other Purchased Services				
580 Travel	3,514.21	5,835.20		9,349.41
Total Other Purchased Services	\$3,514.21	\$5,835.20		\$9,349.41
600 Supplies				
610 General Supplies	130.50	130.50		261.00
Total Supplies	\$130.50	\$130.50		\$261.00
Total 2270 Instructional Staff Professional Development Services	\$117,427.28	\$87,717.93		\$205,145.21

General Fund (10)

2300 Support Services – Administration

	<u>Elementary</u>	<u>Secondary</u>	<u>Federal</u>	<u>Total</u>
100 Personnel Services – Salaries				
100 Personnel Services – Salaries	319,692.29	389,582.02		900,707.69
Total Personnel Services – Salaries	\$319,692.29	\$389,582.02		\$900,707.69
200 Personnel Services – Employee Benefits				
210 Group Insurance – Contracted Provider	54,024.74	28,878.46		94,442.53
220 Social Security Contributions	23,259.87	29,379.63		67,517.95
230 PSERS Retirement Contributions	92,251.15	115,805.47		254,369.87
250 Unemployment Compensation	(150.77)	(159.76)		(349.30)
260 Workers' Compensation	3,248.94	3,953.75		9,216.15
280 Other Post-Employment Benefits (OPEB)	3,392.12			3,392.12
291 Other Retirement Plans	2,325.00	3,600.00		5,925.00
292 Health Savings Accounts	6,370.00	6,370.00		14,560.00
Total Personnel Services – Employee Benefits	\$184,721.05	\$187,827.55		\$449,074.32
300 Purchased Professional and Technical Services				
330 Other Professional Services				128,133.42
Total Purchased Professional and Technical Services				\$128,133.42
400 Purchased Property Services				
430 Repairs and Maintenance Services		65.00		65.00
440 Rentals	432.00	2,819.28		3,251.28
Total Purchased Property Services	\$432.00	\$2,884.28		\$3,316.28
500 Other Purchased Services				
520 Insurance – General				14,968.00
530 Communications	968.95	4,000.00		4,968.95
549 Other Advertising/Public Relations				14,887.47
580 Travel	1,357.42	2,216.42		9,943.31
Total Other Purchased Services	\$2,326.37	\$6,216.42		\$44,767.73
600 Supplies				
610 General Supplies	11,958.13	16,128.40		44,114.56
630 Food	1,986.56	1,482.29		3,468.85
640 Books and Periodicals	34.66	956.36		1,309.91
650 Supplies & Fees – Technology Related	6,707.59	3,225.50		43,942.16
Total Supplies	\$20,686.94	\$21,792.55		\$92,835.48
800 Other Objects				
810 Dues and Fees	595.00	1,399.00		164,312.00
890 Miscellaneous Expenditures		4,199.43		4,199.43
Total Other Objects	\$595.00	\$5,598.43		\$168,511.43
Total 2300 Support Services – Administration	\$528,453.65	\$613,901.25		\$1,787,346.35

General Fund (10)

2310 Board Services

Elementary

Secondary

Federal

Total

300 Purchased Professional and Technical Services

330 Other Professional Services

790.30

Total Purchased Professional and Technical Services

\$790.30

500 Other Purchased Services

520 Insurance – General

14,033.00

549 Other Advertising/Public Relations

14,887.47

580 Travel

1,649.19

Total Other Purchased Services

\$30,569.66

600 Supplies

610 General Supplies

127.42

650 Supplies & Fees – Technology Related

17,086.87

Total Supplies

\$17,214.29

800 Other Objects

810 Dues and Fees

2,301.00

Total Other Objects

\$2,301.00

Total 2310 Board Services

\$50,875.25

General Fund (10)

2320 Board Treasurer Services

Elementary

Secondary

Federal

Total

500 Other Purchased Services

520 Insurance – General

935.00

Total Other Purchased Services

\$935.00

Total 2320 Board Treasurer Services

\$935.00

General Fund (10)

2330 Tax Assessment and Collection Services

Elementary

Secondary

Federal

Total

100 Personnel Services – Salaries

100 Personnel Services – Salaries

44,035.00

Total Personnel Services – Salaries

\$44,035.00

200 Personnel Services – Employee Benefits

220 Social Security Contributions

3,369.04

260 Workers' Compensation

448.48

Total Personnel Services – Employee Benefits

\$3,817.52

300 Purchased Professional and Technical Services

330 Other Professional Services

84,587.12

Total Purchased Professional and Technical Services

\$84,587.12

600 Supplies

610 General Supplies

14,256.86

Total Supplies

\$14,256.86

Total 2330 Tax Assessment and Collection Services

\$146,696.50

General Fund (10)

2350 Legal and Accounting Services

Elementary

Secondary

Federal

Total

300 Purchased Professional and Technical Services

330 Other Professional Services

42,756.00

Total Purchased Professional and Technical Services

\$42,756.00

Total 2350 Legal and Accounting Services

\$42,756.00

General Fund (10)

2360 Office of the Superintendent / Executive Director Services

Elementary

Secondary

Federal

Total

100 Personnel Services – Salaries

100 Personnel Services – Salaries

147,398.38

Total Personnel Services – Salaries

\$147,398.38

200 Personnel Services – Employee Benefits

210 Group Insurance – Contracted Provider

11,539.33

220 Social Security Contributions

11,509.41

230 PSERS Retirement Contributions

46,313.25

250 Unemployment Compensation

(38.77)

260 Workers' Compensation

1,564.98

292 Health Savings Accounts

1,820.00

Total Personnel Services – Employee Benefits

\$72,708.20

500 Other Purchased Services

580 Travel

4,720.28

Total Other Purchased Services

\$4,720.28

600 Supplies

610 General Supplies

1,643.75

640 Books and Periodicals

318.89

Total Supplies

\$1,962.64

800 Other Objects

810 Dues and Fees

3,164.00

Total Other Objects

\$3,164.00

Total 2360 Office of the Superintendent / Executive Director Services

\$229,953.50

General Fund (10)

2380 Office of the Principal Services

	<u>Elementary</u>	<u>Secondary</u>	<u>Federal</u>	<u>Total</u>
100 Personnel Services – Salaries				
100 Personnel Services – Salaries	319,692.29	389,582.02		709,274.31
Total Personnel Services – Salaries	\$319,692.29	\$389,582.02		\$709,274.31
200 Personnel Services – Employee Benefits				
210 Group Insurance – Contracted Provider	54,024.74	28,878.46		82,903.20
220 Social Security Contributions	23,259.87	29,379.63		52,639.50
230 PSERS Retirement Contributions	92,251.15	115,805.47		208,056.62
250 Unemployment Compensation	(150.77)	(159.76)		(310.53)
260 Workers' Compensation	3,248.94	3,953.75		7,202.69
280 Other Post-Employment Benefits (OPEB)	3,392.12			3,392.12
291 Other Retirement Plans	2,325.00	3,600.00		5,925.00
292 Health Savings Accounts	6,370.00	6,370.00		12,740.00
Total Personnel Services – Employee Benefits	\$184,721.05	\$187,827.55		\$372,548.60
400 Purchased Property Services				
430 Repairs and Maintenance Services		65.00		65.00
440 Rentals	432.00	2,819.28		3,251.28
Total Purchased Property Services	\$432.00	\$2,884.28		\$3,316.28
500 Other Purchased Services				
530 Communications	968.95	4,000.00		4,968.95
580 Travel	1,357.42	2,216.42		3,573.84
Total Other Purchased Services	\$2,326.37	\$6,216.42		\$8,542.79
600 Supplies				
610 General Supplies	11,958.13	16,128.40		28,086.53
630 Food	1,986.56	1,482.29		3,468.85
640 Books and Periodicals	34.66	956.36		991.02
650 Supplies & Fees – Technology Related	6,707.59	3,225.50		9,933.09
Total Supplies	\$20,686.94	\$21,792.55		\$42,479.49
800 Other Objects				
810 Dues and Fees	595.00	1,399.00		1,994.00
890 Miscellaneous Expenditures		4,199.43		4,199.43
Total Other Objects	\$595.00	\$5,598.43		\$6,193.43
Total 2380 Office of the Principal Services	\$528,453.65	\$613,901.25		\$1,142,354.90

General Fund (10)

2390 Other Administration Services

Elementary

Secondary

Federal

Total

600 Supplies

650 Supplies & Fees – Technology Related

16,922.20

Total Supplies

\$16,922.20

800 Other Objects

810 Dues and Fees

156,853.00

Total Other Objects

\$156,853.00

Total 2390 Other Administration Services

\$173,775.20

General Fund (10)

2440 Nursing Services

	<u>Elementary</u>	<u>Secondary</u>	<u>Federal</u>	<u>Total</u>
100 Personnel Services – Salaries				
100 Personnel Services – Salaries				182,645.75
Total Personnel Services – Salaries				\$182,645.75
200 Personnel Services – Employee Benefits				
210 Group Insurance – Contracted Provider				73,716.76
220 Social Security Contributions				13,063.61
230 PSERS Retirement Contributions				54,875.10
250 Unemployment Compensation				(0.07)
260 Workers' Compensation				1,856.44
292 Health Savings Accounts				9,100.00
Total Personnel Services – Employee Benefits				\$152,611.84
500 Other Purchased Services				
580 Travel				18.36
Total Other Purchased Services				\$18.36
600 Supplies				
610 General Supplies				7,017.82
Total Supplies				\$7,017.82
Total 2440 Nursing Services				\$342,293.77

General Fund (10)

2490 Other Health Services

Elementary

Secondary

Federal

Total

300 Purchased Professional and Technical Services

330 Other Professional Services

21,393.71

Total Purchased Professional and Technical Services

\$21,393.71

Total 2490 Other Health Services

\$21,393.71

General Fund (10)

2500 Support Services – Business

Elementary Secondary Federal Total

100	<u>Personnel Services – Salaries</u>			
	100 Personnel Services – Salaries			175,185.97
Total Personnel Services – Salaries				\$175,185.97
200	<u>Personnel Services – Employee Benefits</u>			
	210 Group Insurance – Contracted Provider			48,581.49
	220 Social Security Contributions			12,574.77
	230 PSERS Retirement Contributions			52,573.53
	250 Unemployment Compensation			(94.81)
	260 Workers' Compensation			1,773.22
	292 Health Savings Accounts			6,370.00
Total Personnel Services – Employee Benefits				\$121,778.20
300	<u>Purchased Professional and Technical Services</u>			
	324 Professional Educational Services – Employee Training and Development Services			155.00
	330 Other Professional Services			46,217.91
Total Purchased Professional and Technical Services				\$46,372.91
400	<u>Purchased Property Services</u>			
	440 Rentals			10,956.36
Total Purchased Property Services				\$10,956.36
500	<u>Other Purchased Services</u>			
	530 Communications			6,000.00
	580 Travel			1,437.93
Total Other Purchased Services				\$7,437.93
600	<u>Supplies</u>			
	610 General Supplies			3,971.38
	650 Supplies & Fees – Technology Related			16,497.72
Total Supplies				\$20,469.10
800	<u>Other Objects</u>			
	810 Dues and Fees			1,774.00
Total Other Objects				\$1,774.00
Total 2500 Support Services – Business				\$383,974.47

General Fund (10)

2590 Other Support Services – Business

	<u>Elementary</u>	<u>Secondary</u>	<u>Federal</u>	<u>Total</u>
--	-------------------	------------------	----------------	--------------

100 Personnel Services – Salaries

100 Personnel Services – Salaries				175,185.97
-----------------------------------	--	--	--	------------

Total Personnel Services – Salaries				\$175,185.97
--	--	--	--	---------------------

200 Personnel Services – Employee Benefits

210 Group Insurance – Contracted Provider				48,581.49
---	--	--	--	-----------

220 Social Security Contributions				12,574.77
-----------------------------------	--	--	--	-----------

230 PSERS Retirement Contributions				52,573.53
------------------------------------	--	--	--	-----------

250 Unemployment Compensation				(94.81)
-------------------------------	--	--	--	---------

260 Workers' Compensation				1,773.22
---------------------------	--	--	--	----------

292 Health Savings Accounts				6,370.00
-----------------------------	--	--	--	----------

Total Personnel Services – Employee Benefits				\$121,778.20
---	--	--	--	---------------------

300 Purchased Professional and Technical Services

324 Professional Educational Services – Employee Training and Development Services				155.00
--	--	--	--	--------

330 Other Professional Services				46,217.91
---------------------------------	--	--	--	-----------

Total Purchased Professional and Technical Services				\$46,372.91
--	--	--	--	--------------------

400 Purchased Property Services

440 Rentals				10,956.36
-------------	--	--	--	-----------

Total Purchased Property Services				\$10,956.36
--	--	--	--	--------------------

500 Other Purchased Services

530 Communications				6,000.00
--------------------	--	--	--	----------

580 Travel				1,437.93
------------	--	--	--	----------

Total Other Purchased Services				\$7,437.93
---------------------------------------	--	--	--	-------------------

600 Supplies

610 General Supplies				3,971.38
----------------------	--	--	--	----------

650 Supplies & Fees – Technology Related				16,497.72
--	--	--	--	-----------

Total Supplies				\$20,469.10
-----------------------	--	--	--	--------------------

800 Other Objects

810 Dues and Fees				1,774.00
-------------------	--	--	--	----------

Total Other Objects				\$1,774.00
----------------------------	--	--	--	-------------------

Total 2590 Other Support Services – Business				\$383,974.47
---	--	--	--	---------------------

General Fund (10)

2600 Operation and Maintenance of Plant Services

Elementary Secondary Federal Total

100	<u>Personnel Services – Salaries</u>			
100	Personnel Services – Salaries			812,079.73
Total Personnel Services – Salaries				\$812,079.73
200	<u>Personnel Services – Employee Benefits</u>			
210	Group Insurance – Contracted Provider			159,060.08
220	Social Security Contributions			60,228.40
230	PSERS Retirement Contributions			240,244.93
250	Unemployment Compensation			(419.96)
260	Workers' Compensation			8,226.20
292	Health Savings Accounts			20,020.00
Total Personnel Services – Employee Benefits				\$487,359.65
300	<u>Purchased Professional and Technical Services</u>			
330	Other Professional Services			1,100.00
340	Technical Services			4,500.00
350	Security / Safety Services			46,590.87
Total Purchased Professional and Technical Services				\$52,190.87
400	<u>Purchased Property Services</u>			
410	Cleaning Services			38,695.44
420	Utility Services			77,231.30
430	Repairs and Maintenance Services			109,061.29
440	Rentals			1,604.15
460	Extermination Services			4,156.00
Total Purchased Property Services				\$230,748.18
500	<u>Other Purchased Services</u>			
522	Automotive Liability Insurance			4,059.00
523	General Property and Liability Insurance			94,269.00
530	Communications			23,954.11
580	Travel			705.53
Total Other Purchased Services				\$122,987.64
600	<u>Supplies</u>			
610	General Supplies	50,477.76	81,226.57	131,704.33
620	Energy			529,305.01
Total Supplies		\$50,477.76	\$81,226.57	\$661,009.34
700	<u>Property</u>			
752	Capital Equipment – Original and Additional			18,928.03
Total Property				\$18,928.03
800	<u>Other Objects</u>			
810	Dues and Fees			218.00
Total Other Objects				\$218.00
Total 2600 Operation and Maintenance of Plant Services		\$50,477.76	\$81,226.57	\$2,385,521.44

General Fund (10)

	<u>Elementary</u>	<u>Secondary</u>	<u>Federal</u>	<u>Total</u>
2660 Safety and Security Services				
100 Personnel Services – Salaries				
100 Personnel Services – Salaries				509.34
Total Personnel Services – Salaries				\$509.34
200 Personnel Services – Employee Benefits				
220 Social Security Contributions				37.40
230 PSERS Retirement Contributions				152.95
250 Unemployment Compensation				5.09
260 Workers' Compensation				6.11
Total Personnel Services – Employee Benefits				\$201.55
300 Purchased Professional and Technical Services				
350 Security / Safety Services				46,590.87
Total Purchased Professional and Technical Services				\$46,590.87
600 Supplies				
610 General Supplies	158.20	158.20		316.40
Total Supplies	\$158.20	\$158.20		\$316.40
Total 2660 Safety and Security Services	\$158.20	\$158.20		\$47,618.16

General Fund (10)

2690 Other Operation and Maintenance of Plant Services

Elementary

Secondary

Federal

Total

100 Personnel Services – Salaries

100 Personnel Services – Salaries 811,570.39

Total Personnel Services – Salaries \$811,570.39

200 Personnel Services – Employee Benefits

210 Group Insurance – Contracted Provider 159,060.08

220 Social Security Contributions 60,191.00

230 PSERS Retirement Contributions 240,091.98

250 Unemployment Compensation (425.05)

260 Workers' Compensation 8,220.09

292 Health Savings Accounts 20,020.00

Total Personnel Services – Employee Benefits \$487,158.10

300 Purchased Professional and Technical Services

330 Other Professional Services 1,100.00

340 Technical Services 4,500.00

Total Purchased Professional and Technical Services \$5,600.00

400 Purchased Property Services

410 Cleaning Services 38,695.44

420 Utility Services 77,231.30

430 Repairs and Maintenance Services 109,061.29

440 Rentals 1,604.15

460 Extermination Services 4,156.00

Total Purchased Property Services \$230,748.18

500 Other Purchased Services

522 Automotive Liability Insurance 4,059.00

523 General Property and Liability Insurance 94,269.00

530 Communications 23,954.11

580 Travel 705.53

Total Other Purchased Services \$122,987.64

600 Supplies

610 General Supplies 50,319.56 81,068.37 131,387.93

620 Energy 529,305.01

Total Supplies \$50,319.56 \$81,068.37 \$660,692.94

700 Property

752 Capital Equipment – Original and Additional 18,928.03

Total Property \$18,928.03

800 Other Objects

810 Dues and Fees 218.00

Total Other Objects \$218.00

Total 2690 Other Operation and Maintenance of Plant Services \$50,319.56 \$81,068.37 \$2,337,903.28

General Fund (10)

	<u>Elementary</u>	<u>Secondary</u>	<u>Federal</u>	<u>Total</u>
2700 Student Transportation Services				
400 <u>Purchased Property Services</u>				
440 Rentals				11,983.32
Total Purchased Property Services				\$11,983.32
500 <u>Other Purchased Services</u>				
511 Student Transportation Services from Another LEA Within the State				2,436.31
513 Contracted Carriers				1,894,394.93
516 Student Transportation Services From the IU				22,947.12
Total Other Purchased Services				\$1,919,778.36
600 <u>Supplies</u>				
610 General Supplies				137.00
650 Supplies & Fees – Technology Related				4,050.00
Total Supplies				\$4,187.00
Total 2700 Student Transportation Services				\$1,935,948.68

General Fund (10)

2750 Nonpublic Transportation

Elementary

Secondary

Federal

Total

500 Other Purchased Services

513 Contracted Carriers

292,175.11

Total Other Purchased Services

\$292,175.11

Total 2750 Nonpublic Transportation

\$292,175.11

General Fund (10)

2790 Other Student Transportation Services

Elementary

Secondary

Federal

Total

400 Purchased Property Services

440 Rentals 11,983.32

Total Purchased Property Services

\$11,983.32

500 Other Purchased Services

511 Student Transportation Services from Another LEA Within the State 2,436.31

513 Contracted Carriers 1,602,219.82

516 Student Transportation Services From the IU 22,947.12

Total Other Purchased Services

\$1,627,603.25

600 Supplies

610 General Supplies 137.00

650 Supplies & Fees – Technology Related 4,050.00

Total Supplies

\$4,187.00

Total 2790 Other Student Transportation Services

\$1,643,773.57

General Fund (10)

	<u>Elementary</u>	<u>Secondary</u>	<u>Federal</u>	<u>Total</u>
2800 Support Services – Central				
200 <u>Personnel Services – Employee Benefits</u>				
240 Tuition Reimbursement				882.00
Total Personnel Services – Employee Benefits				\$882.00
500 <u>Other Purchased Services</u>				
580 Travel			1,316.86	1,316.86
Total Other Purchased Services			\$1,316.86	\$1,316.86
800 <u>Other Objects</u>				
810 Dues and Fees			100.00	100.00
890 Miscellaneous Expenditures				460.00
Total Other Objects			\$100.00	\$560.00
Total 2800 Support Services – Central			\$1,416.86	\$2,758.86

General Fund (10)

2830 Staff Services

Elementary

Secondary

Federal

Total

200 Personnel Services – Employee Benefits

240 Tuition Reimbursement

882.00

Total Personnel Services – Employee Benefits

\$882.00

800 Other Objects

890 Miscellaneous Expenditures

460.00

Total Other Objects

\$460.00

Total 2830 Staff Services

\$1,342.00

LEA : 111312503 Huntingdon Area SD

Printed 12/21/2017 8:59:22 AM

General Fund (10)

2832 Recruitment and Placement Services

Elementary

Secondary

Federal

Total

800 Other Objects

890 Miscellaneous Expenditures

460.00

Total Other Objects

\$460.00

Total 2832 Recruitment and Placement Services

\$460.00

General Fund (10)

2836 Staff Development Services – Non-Instructional, Non-Certified Staff Only

Elementary

Secondary

Federal

Total

200 Personnel Services – Employee Benefits

240 Tuition Reimbursement

882.00

Total Personnel Services – Employee Benefits

\$882.00

Total 2836 Staff Development Services – Non-Instructional, Non-Certified Staff Only

\$882.00

General Fund (10)

2850 State and Federal Agency Liaison Services

Elementary

Secondary

Federal

Total

500 Other Purchased Services

580 Travel

1,316.86

1,316.86

Total Other Purchased Services

\$1,316.86

\$1,316.86

800 Other Objects

810 Dues and Fees

100.00

100.00

Total Other Objects

\$100.00

\$100.00

Total 2850 State and Federal Agency Liaison Services

\$1,416.86

\$1,416.86

General Fund (10)

3000 Operation of Non-Instructional Services	<u>Total</u>
100 Personnel Services – Salaries	
100 Personnel Services – Salaries	251,977.50
Total Personnel Services – Salaries	\$251,977.50
200 Personnel Services – Employee Benefits	
220 Social Security Contributions	19,011.53
230 PSERS Retirement Contributions	73,327.77
250 Unemployment Compensation	1,191.05
260 Workers’ Compensation	2,943.84
292 Health Savings Accounts	409.51
Total Personnel Services – Employee Benefits	\$96,883.70
300 Purchased Professional and Technical Services	
330 Other Professional Services	6,883.93
390 Other Purchased Professional and Technical Services	48,348.62
Total Purchased Professional and Technical Services	\$55,232.55
400 Purchased Property Services	
430 Repairs and Maintenance Services	8,264.30
440 Rentals	8,310.00
Total Purchased Property Services	\$16,574.30
500 Other Purchased Services	
510 Student Transportation Services	64,774.75
580 Travel	30,733.57
Total Other Purchased Services	\$95,508.32
600 Supplies	
610 General Supplies	41,636.95
620 Energy	365.78
Total Supplies	\$42,002.73
800 Other Objects	
810 Dues and Fees	6,230.08
Total Other Objects	\$6,230.08
Total 3000 Operation of Non-Instructional Services	\$564,409.18

General Fund (10)

3200 Student Activities

Elementary Secondary Federal Total

100	<u>Personnel Services – Salaries</u>			
	100 Personnel Services – Salaries			251,977.50
Total Personnel Services – Salaries				\$251,977.50
200	<u>Personnel Services – Employee Benefits</u>			
	220 Social Security Contributions			19,011.53
	230 PSERS Retirement Contributions			73,327.77
	250 Unemployment Compensation			1,191.05
	260 Workers' Compensation			2,943.84
	292 Health Savings Accounts			409.51
Total Personnel Services – Employee Benefits				\$96,883.70
300	<u>Purchased Professional and Technical Services</u>			
	330 Other Professional Services			6,883.93
	390 Other Purchased Professional and Technical Services			48,348.62
Total Purchased Professional and Technical Services				\$55,232.55
400	<u>Purchased Property Services</u>			
	430 Repairs and Maintenance Services			8,264.30
	440 Rentals			8,310.00
Total Purchased Property Services				\$16,574.30
500	<u>Other Purchased Services</u>			
	510 Student Transportation Services			64,774.75
	580 Travel			30,733.57
Total Other Purchased Services				\$95,508.32
600	<u>Supplies</u>			
	610 General Supplies			41,636.95
	620 Energy			365.78
Total Supplies				\$42,002.73
800	<u>Other Objects</u>			
	810 Dues and Fees			6,230.08
Total Other Objects				\$6,230.08
Total 3200 Student Activities				\$564,409.18

General Fund (10)

4000 Facilities Acquisition, Construction and Improvement Services

Total

300 Purchased Professional and Technical Services

330 Other Professional Services

7,230.00

Total Purchased Professional and Technical Services

\$7,230.00

Total 4000 Facilities Acquisition, Construction and Improvement Services

\$7,230.00

General Fund (10)

4200 Existing Site Improvement Services

Elementary

Secondary

Federal

Total

300 Purchased Professional and Technical Services

330 Other Professional Services

7,230.00

Total Purchased Professional and Technical Services

\$7,230.00

Total 4200 Existing Site Improvement Services

\$7,230.00

General Fund (10)

5000 Other Expenditures and Financing Uses

Total

800 Other Objects

830 Interest	814,951.95
880 Refunds of Prior Years' Receipts	3,300.44

Total Other Objects	\$818,252.39
----------------------------	---------------------

900 Other Uses of Funds

910 Redemption of Principal	11,144,504.00
930 Fund Transfers	150,000.00
990 Miscellaneous Other Uses of Funds	59,643.00

Total Other Uses of Funds	\$11,354,147.00
----------------------------------	------------------------

Total 5000 Other Expenditures and Financing Uses	\$12,172,399.39
---	------------------------

General Fund (10)

5100 Debt Service / Other Expenditures and Financing Uses

Elementary

Secondary

Federal

Total

800 Other Objects

830 Interest				814,951.95
880 Refunds of Prior Years' Receipts				3,300.44

Total Other Objects				\$818,252.39
----------------------------	--	--	--	---------------------

900 Other Uses of Funds

910 Redemption of Principal				11,144,504.00
990 Miscellaneous Other Uses of Funds				59,643.00

Total Other Uses of Funds				\$11,204,147.00
----------------------------------	--	--	--	------------------------

Total 5100 Debt Service / Other Expenditures and Financing Uses				\$12,022,399.39
--	--	--	--	------------------------

LEA : 111312503 Huntingdon Area SD

Printed 12/21/2017 8:59:28 AM

General Fund (10)

	<u>Elementary</u>	<u>Secondary</u>	<u>Federal</u>	<u>Total</u>
5110 Debt Service				
800 Other Objects				
830 Interest				814,951.95
Total Other Objects				\$814,951.95
900 Other Uses of Funds				
910 Redemption of Principal				1,431,000.00
Total Other Uses of Funds				\$1,431,000.00
Total 5110 Debt Service				\$2,245,951.95

LEA : 111312503 Huntingdon Area SD

Printed 12/21/2017 8:59:28 AM

General Fund (10)

5120 Debt Service – Refunded Bonds

Elementary

Secondary

Federal

Total

900 Other Uses of Funds

910 Redemption of Principal

9,713,504.00

Total Other Uses of Funds

\$9,713,504.00

Total 5120 Debt Service – Refunded Bonds

\$9,713,504.00

LEA : 111312503 Huntingdon Area SD

Printed 12/21/2017 8:59:28 AM

General Fund (10)

5130 Refund of Prior Year Revenues / Receipts

Elementary

Secondary

Federal

Total

800 Other Objects

880 Refunds of Prior Years' Receipts

3,300.44

Total Other Objects

\$3,300.44

Total 5130 Refund of Prior Year Revenues / Receipts

\$3,300.44

General Fund (10)

5150 Bond Discounts

Elementary

Secondary

Federal

Total

900 Other Uses of Funds

990 Miscellaneous Other Uses of Funds

59,643.00

Total Other Uses of Funds

\$59,643.00

Total 5150 Bond Discounts

\$59,643.00

General Fund (10)

5200 Interfund Transfers – Out

Elementary

Secondary

Federal

Total

900 Other Uses of Funds

930 Fund Transfers

150,000.00

Total Other Uses of Funds

\$150,000.00

Total 5200 Interfund Transfers – Out

\$150,000.00

General Fund (10)

5250 Enterprise Fund Transfers

Elementary

Secondary

Federal

Total

900 Other Uses of Funds

930 Fund Transfers

150,000.00

Total Other Uses of Funds

\$150,000.00

Total 5250 Enterprise Fund Transfers

\$150,000.00

LEA : 111312503 Huntingdon Area SD

Printed 12/21/2017 8:59:24 AM

Capital Reserve Fund - § 1431 (32)

2000 Support Services

Total

800 Other Objects

810 Dues and Fees

733.80

Total Other Objects

\$733.80

Total 2000 Support Services

\$733.80

LEA : 111312503 Huntingdon Area SD

Printed 12/21/2017 8:59:24 AM

Capital Reserve Fund - § 1431 (32)

2500 Support Services – Business

Elementary

Secondary

Federal

Total

800 Other Objects

810 Dues and Fees

733.80

Total Other Objects

\$733.80

Total 2500 Support Services – Business

\$733.80

LEA : 111312503 Huntingdon Area SD

Printed 12/21/2017 8:59:24 AM

Capital Reserve Fund - § 1431 (32)

2590 Other Support Services – Business

Elementary

Secondary

Federal

Total

800 Other Objects

810 Dues and Fees

733.80

Total Other Objects

\$733.80

Total 2590 Other Support Services – Business

\$733.80

Capital Reserve Fund - § 1431 (32)

4000 Facilities Acquisition, Construction and Improvement Services

Total

300 Purchased Professional and Technical Services

330 Other Professional Services 16,344.65

340 Technical Services 209,773.00

Total Purchased Professional and Technical Services \$226,117.65

400 Purchased Property Services

430 Repairs and Maintenance Services 5,843.47

450 Construction Services 485,575.00

Total Purchased Property Services \$491,418.47

700 Property

780 Infrastructure Assets (75,549.26)

Total Property (\$75,549.26)

Total 4000 Facilities Acquisition, Construction and Improvement Services \$641,986.86

Capital Reserve Fund - § 1431 (32)

4200 Existing Site Improvement Services

Elementary

Secondary

Federal

Total

300 Purchased Professional and Technical Services

330 Other Professional Services

16,344.65

Total Purchased Professional and Technical Services

\$16,344.65

400 Purchased Property Services

450 Construction Services

417,270.00

Total Purchased Property Services

\$417,270.00

Total 4200 Existing Site Improvement Services

\$433,614.65

LEA : 111312503 Huntingdon Area SD

Printed 12/21/2017 8:59:27 AM

Capital Reserve Fund - § 1431 (32)

4600 Existing Building Improvement Services

Elementary

Secondary

Federal

Total

300 Purchased Professional and Technical Services

340 Technical Services

209,773.00

Total Purchased Professional and Technical Services

\$209,773.00

400 Purchased Property Services

430 Repairs and Maintenance Services

5,843.47

450 Construction Services

68,305.00

Total Purchased Property Services

\$74,148.47

700 Property

780 Infrastructure Assets

(75,549.26)

Total Property

(\$75,549.26)

Total 4600 Existing Building Improvement Services

\$208,372.21

	<u>General Fund(10)</u>	<u>Public Purpose Trust(27)</u>	<u>Other Compt Approved (28)</u>	<u>Athletic / Activity(29)</u>	<u>Capital Reserve (690. 1850)(31)</u>
1000 Instruction					
1100 Regular Programs - Elementary / Secondary	9,754,328.17				
1200 Special Programs - Elementary / Secondary	4,623,745.83				
1300 Vocational Education	932,271.84				
1400 Other Instructional Programs - Elementary / Secondary	213,434.15				
Total Instruction	\$15,523,779.99				
2000 Support Services					
2100 Support Services - Students	950,317.64				
2200 Support Services - Instructional Staff	1,383,024.92				
2300 Support Services - Administration	1,787,346.35				
2400 Support Services - Pupil Health	363,687.48				
2500 Support Services - Business	383,974.47				
2600 Operation and Maintenance of Plant Services	2,385,521.44				
2700 Student Transportation Services	1,935,948.68				
2800 Support Services - Central	2,758.86				
Total Support Services	\$9,192,579.84				
3000 Operation of Non-Instructional Services					
3200 Student Activities	564,409.18				
Total Operation of Non-Instructional Services	\$564,409.18				
4000 Facilities Acquisition, Construction and Improvement Services					
4200 Existing Site Improvement Services	7,230.00				
4600 Existing Building Improvement Services					
Total Facilities Acquisition, Construction and Improvement Services	\$7,230.00				
5000 Other Expenditures and Financing Uses					
5100 Debt Service / Other Expenditures and Financing Uses	12,022,399.39				
5200 Interfund Transfers - Out	150,000.00				
Total Other Expenditures and Financing Uses	\$12,172,399.39				
TOTAL ACTUAL EXPENDITURES & OTHER FINANCING USES	\$37,460,398.40				

	<u>Capital Reserve (1431)(32)</u>	<u>Other Capital Projects Fund(39)</u>	<u>Debt Service(40)</u>	<u>Permanent(90)</u>	<u>Total</u>
1000 Instruction					
1100 Regular Programs - Elementary / Secondary					9,754,328.17
1200 Special Programs - Elementary / Secondary					4,623,745.83
1300 Vocational Education					932,271.84
1400 Other Instructional Programs - Elementary / Secondary					213,434.15
Total Instruction					\$15,523,779.99
2000 Support Services					
2100 Support Services - Students					950,317.64
2200 Support Services - Instructional Staff					1,383,024.92
2300 Support Services - Administration					1,787,346.35
2400 Support Services - Pupil Health					363,687.48
2500 Support Services - Business	733.80				384,708.27
2600 Operation and Maintenance of Plant Services					2,385,521.44
2700 Student Transportation Services					1,935,948.68
2800 Support Services - Central					2,758.86
Total Support Services	\$733.80				\$9,193,313.64
3000 Operation of Non-Instructional Services					
3200 Student Activities					564,409.18
Total Operation of Non-Instructional Services					\$564,409.18
4000 Facilities Acquisition, Construction and Improvement Services					
4200 Existing Site Improvement Services		433,614.65			440,844.65
4600 Existing Building Improvement Services		208,372.21			208,372.21
Total Facilities Acquisition, Construction and Improvement Services		\$641,986.86			\$649,216.86
5000 Other Expenditures and Financing Uses					
5100 Debt Service / Other Expenditures and Financing Uses					12,022,399.39
5200 Interfund Transfers - Out					150,000.00
Total Other Expenditures and Financing Uses					\$12,172,399.39
TOTAL ACTUAL EXPENDITURES & OTHER FINANCING USES		\$642,720.66			\$38,103,119.06

LEA : 111312503 Huntingdon Area SD

Printed 12/21/2017 8:59:33 AM

PSERS Salary Data (Salary Data should relate to the General Fund only)

Amount Description	Amount
Total Salary Base for salaries subject to PSERS withholding	10,890,418.53
Total Federally Funded salaries subject to PSERS withholding	524,391.17
	<hr/>

Title I Expenditure Data

Amount Description	Amount
Expenditures Funded with Current Title I Funds	414,621.00
Expenditures Funded with Carry over Title I Funds	
	<hr/>
Total Title I Expenditure Data	\$414,621.00
	<hr/>

Title I ARRA Amount

Amount Description	Amount
Portion of Total Title I Expenditures funded with ARRA Title I	
	<hr/>

Benefits for Staff Relative to Collective Bargaining Agreements

	OBJECT	COVERED	NOT COVERED	TOTAL
10 General Fund	No Self Insurance data to report			
	211 Medical Insurance	1,844,933.01	174,777.02	2,019,710.03
	212 Dental Insurance	44,533.52	6,711.00	51,244.52
	215 Eye Care Insurance		1,404.32	1,404.32
	216 Prescription Insurance			
	271 Self-Insurance Medical Benefits			
	272 Self-Insurance Dental Benefits			
	275 Self-Insurance Eye Care Benefits			
	276 Self-Insurance Prescription Benefits			
	FUND TOTAL	\$1,889,466.53	\$182,892.34	\$2,072,358.87
50 Enterprise Fund	No Self Insurance data to report			
	211 Medical Insurance			
	212 Dental Insurance			
	215 Eye Care Insurance			
	216 Prescription Insurance			
	271 Self-Insurance Medical Benefits			
	272 Self-Insurance Dental Benefits			
	275 Self-Insurance Eye Care Benefits			
	276 Self-Insurance Prescription Benefits			
	FUND TOTAL			
60 Internal Service Fund	No Self Insurance data to report			
	211 Medical Insurance			
	212 Dental Insurance			
	215 Eye Care Insurance			
	216 Prescription Insurance			
	271 Self-Insurance Medical Benefits			
	272 Self-Insurance Dental Benefits			
	275 Self-Insurance Eye Care Benefits			
	276 Self-Insurance Prescription Benefits			
	FUND TOTAL			
Total of All Funds		\$1,889,466.53	\$182,892.34	\$2,072,358.87

LEA : 111312503 Huntingdon Area SD

Printed 12/21/2017 8:59:34 AM

Function	Special Education (Prior Year)	Nonspecial Education (Prior Year)	Total (Prior Year)	Special Education (Current Year)	Nonspecial Education (Current Year)	Total (Current Year)
2120 Guidance Services	77,583.47	322,032.98	399,616.45	87,910.90	360,248.66	448,159.56
2140 Psychological Services	34,828.72	144,566.84	179,395.56	39,701.83	162,693.49	202,395.32
2150 Speech Pathology and Audiology Services						
2160 Social Work Services						
2260 Instruction and Curriculum Development Services	58,247.18	241,772.02	300,019.20	68,845.25	282,119.80	350,965.05
2350 Legal and Accounting Services	232.50	51,550.25	51,782.75		42,756.00	42,756.00
2420 Medical Services						
2440 Nursing Services	60,925.06	252,887.36	313,812.42	57,360.81	235,057.90	292,418.71
2700 Student Transportation Services	399,378.09	1,657,736.02	2,057,114.11	379,755.37	1,556,193.31	1,935,948.68
Total	\$631,195.02	\$2,670,545.47	\$3,301,740.49	\$633,574.16	\$2,639,069.16	\$3,272,643.32

(PRINCIPAL AMOUNTS ONLY)

GOVERNMENTAL FUNDS/ ACTIVITIES

	Short-Term Borrowing	General Obligation Bonds/Notes	Authority Building Obligations	Other Long-Term Debt	Other Post-Employment Benefits (OPEB)	Compensated Absences	Net Pension Liability	Total
1. Debt at Beginning of Fiscal Year		31,442,000.00			529,697.00	1,297,199.00	35,778,000.00	69,046,896.00
2. Additional Debt Incurred During Year		9,930,000.00					6,643,000.00	16,573,000.00
3. Retirements and Repayments		10,946,000.00			11,219.00	44,700.00		11,001,919.00
4. Debt at End of Fiscal Year		30,426,000.00			518,478.00	1,252,499.00	42,421,000.00	74,617,977.00
5. Accreted Interest at End Of Fiscal Year								
6. Total Debt and Accreted Interest		30,426,000.00			518,478.00	1,252,499.00	42,421,000.00	74,617,977.00
7. Current Portion P&I - Due within 1 year		2,273,700.04						2,273,700.04
8. Interest Paid during current fiscal year		814,951.95						814,951.95

(PRINCIPAL AMOUNTS ONLY)

PROPRIETARY FUNDS

- 1. Debt at Beginning of Fiscal Year
- 2. Additional Debt Incurred During Year
- 3. Retirements and Repayments
- 4. Debt at End of Fiscal Year
- 5. Accreted Interest at End Of Fiscal Year
- 6. Total Debt and Accreted Interest
- 7. Current Portion P&I - Due within 1 year
- 8. Interest Paid during current fiscal year

Total Principal and Interest Payments Made by Your School - All Funds

Function	Fund		Principal (910)	Principal (920)	Interest (830)	Total (Principal +Interest)	Misc Other Uses (990)
5110	10	General Fund	1,431,000.00		814,951.95	2,245,951.95	
5110	20	Special Revenue Funds					
5110	30	Capital Projects Funds					
5110	40	Debt Service Fund					
5110	90	Permanent Fund					
5120	10	General Fund	9,713,504.00			9,713,504.00	
5120	20	Special Revenue Funds					
5120	30	Capital Projects Funds					
5120	40	Debt Service Fund					

Total Debt Payments - Governmental Funds			\$11,144,504.00		\$814,951.95	\$11,959,455.95	
---	--	--	------------------------	--	---------------------	------------------------	--

Function	Fund		Principal (910)	Principal (920)	Interest (830)	Total (Principal +Interest)
5110	50	Enterprise Fund				
5110	60	Internal Service Fund				
5120	50	Enterprise Fund				
5120	60	Internal Service Fund				

Total Debt Payments - Proprietary Funds							
--	--	--	--	--	--	--	--

Debt Details
Governmental Funds/ Activities

Debt Category	Debt Issue Date (MM/YYYY)	Principal Amounts Only			Debt at End of Fiscal Year	Current Portion Due Within One Year (Principal and Interest)	Interest Paid During Fiscal Year
		Debt at Beginning of Fiscal Year	Additions	Reductions / Repayments			
General Obligation Bonds/Notes – CIB	12/2016		9,930,000.00	75,000.00	9,855,000.00	330,640.00	56,129.90
General Obligation Bonds/Notes – CIB	06/2015	9,855,000.00		40,000.00	9,815,000.00	371,715.00	323,348.92
General Obligation Bonds/Notes – CIB	07/2014	8,647,000.00		166,000.00	8,481,000.00	341,395.04	172,804.36
General Obligation Bonds/Notes – CIB	05/2013	2,320,000.00		1,145,000.00	1,175,000.00	1,186,750.00	34,950.00
General Obligation Bonds/Notes – CIB	01/2012	9,985,000.00		8,885,000.00	1,100,000.00	43,200.00	214,706.27
General Obligation Bonds/Notes – CIB	03/2011	635,000.00		635,000.00			13,012.50
Compensated Absences		1,297,199.00		44,700.00	1,252,499.00		
Other Post-Employment Benefits (OPEB)		529,697.00		11,219.00	518,478.00		
Net Pension Liability		35,778,000.00	6,643,000.00		42,421,000.00		
Totals for Debt Entered:		\$69,046,896.00	\$16,573,000.00	\$11,001,919.00	\$74,617,977.00	\$2,273,700.04	\$814,951.95

General Fund (10)

Section 1: Tuition/Purchased Services as Reported within Expenditure Detail

	Amount
Tuition Reported in General Fund Expenditures 1000-560	2,389,656.12
Purchased Services in General Fund Expenditures 1000-594 and 1000-597	

Section 1 Total	\$2,389,656.12
------------------------	-----------------------

Section 2: Tuition Paid to Institution Types During Fiscal Year

	Tuition Paid For Nonspecial Education	Tuition Paid For Special Education	Total
1 1306 Institutions			
2 Institutionalized Children's Programs			
3 Juveniles Incarcerated in Adult Facilities			
4 Residential Treatment Facilities			
5 Other Local Education Agencies	4,047.85	91,398.40	95,446.25
6 Brick and Mortar Charter Schools	616,689.81	458,286.36	1,074,976.17
7 Cyber Charter Schools	200,039.32	124,003.07	324,042.39
8 Career and Technology Centers	637,392.00		637,392.00
9 Approved Private Schools		211,892.33	211,892.33
10 PA Chartered Schools for the Deaf and Blind			
11 Private Residential Rehabilitative Institutions	5,170.38	40,736.60	45,906.98
12 Juvenile Detention Centers			
13 Special Program Jointures			
14 Other Tuition Not Included Elsewhere In This Section			

Section 2 Total	\$1,463,339.36	\$926,316.76	\$2,389,656.12
------------------------	-----------------------	---------------------	-----------------------

LEA : 111312503 Huntingdon Area SD

Printed 12/21/2017 8:59:37 AM

Food Service / Cafeteria Operations Fund (51)

3000 Operation of Non-Instructional Services

Total

100 Personnel Services – Salaries

100 Personnel Services – Salaries 371,888.00

Total Personnel Services – Salaries

\$371,888.00

200 Personnel Services – Employee Benefits

210 Group Insurance – Contracted Provider 130,012.00

220 Social Security Contributions 26,201.00

230 PSERS Retirement Contributions 97,099.00

250 Unemployment Compensation 2,171.00

260 Workers’ Compensation 4,460.00

291 Other Retirement Plans 1,725.00

292 Health Savings Accounts 14,560.00

Total Personnel Services – Employee Benefits

\$276,228.00

400 Purchased Property Services

430 Repairs and Maintenance Services 10,333.00

Total Purchased Property Services

\$10,333.00

500 Other Purchased Services

580 Travel 575.00

Total Other Purchased Services

\$575.00

600 Supplies

610 General Supplies 32,226.00

630 Food 358,321.00

Total Supplies

\$390,547.00

700 Property

740 Depreciation 8,663.00

Total Property

\$8,663.00

800 Other Objects

810 Dues and Fees 554.00

Total Other Objects

\$554.00

Total 3000 Operation of Non-Instructional Services

\$1,058,788.00

Food Service / Cafeteria Operations Fund (51)

	<u>Elementary</u>	<u>Secondary</u>	<u>Federal</u>	<u>Total</u>
3100 Food Services				
100 Personnel Services – Salaries				
100 Personnel Services – Salaries				371,888.00
Total Personnel Services – Salaries				\$371,888.00
200 Personnel Services – Employee Benefits				
210 Group Insurance – Contracted Provider				130,012.00
220 Social Security Contributions				26,201.00
230 PSERS Retirement Contributions				97,099.00
250 Unemployment Compensation				2,171.00
260 Workers' Compensation				4,460.00
291 Other Retirement Plans				1,725.00
292 Health Savings Accounts				14,560.00
Total Personnel Services – Employee Benefits				\$276,228.00
400 Purchased Property Services				
430 Repairs and Maintenance Services				10,333.00
Total Purchased Property Services				\$10,333.00
500 Other Purchased Services				
580 Travel				575.00
Total Other Purchased Services				\$575.00
600 Supplies				
610 General Supplies				32,226.00
630 Food				358,321.00
Total Supplies				\$390,547.00
700 Property				
740 Depreciation				8,663.00
Total Property				\$8,663.00
800 Other Objects				
810 Dues and Fees				554.00
Total Other Objects				\$554.00
Total 3100 Food Services				\$1,058,788.00

	<u>Food Service(51)</u>	<u>Child Care Operations(52)</u>	<u>Other Enterprise(58)</u>	<u>Internal Service(60)</u>	<u>Total</u>
3000 <u>Operation of Non-Instructional Services</u>					
3100 Food Services	1,058,788.00				1,058,788.00
Total Operation of Non-Instructional Services	\$1,058,788.00				\$1,058,788.00
TOTAL ACTUAL EXPENDITURES & OTHER FINANCING USES	\$1,058,788.00				\$1,058,788.00