

LEA Name : Huntingdon Area SD  
Address : 2400 Cassady Ave  
Huntingdon , PA 16652

County  
AUN Number  
LEA Type

## Annual Financial Report Accuracy Certification Statement

For Fiscal Year Ending  
**6/30/2018**

Pennsylvania Department of Education


&

Office of Comptroller Operations

PDE-2056: Intermediate Unit

PDE-2057: School District, AVTS/CTC, Charter School,  
and Special Program Jointure

**CERTIFICATION: By signing this page I agree that the electronic data submitted is a complete and accurate statement of the financial operations and status of the local education agency for the fiscal year. It has been prepared in accordance with generally accepted accounting principles and established Commonwealth of PA reporting guidelines.**

  
\_\_\_\_\_  
Chief School Administrator Signature

11/15/18  
\_\_\_\_\_  
Date

  
\_\_\_\_\_  
Board Secretary Signature

11/13/18  
\_\_\_\_\_  
Date

Faith Swanson  
\_\_\_\_\_  
Contact Person

(814)641-2120      Ext :  
\_\_\_\_\_  
Contact Person Telephone Number

fswanson@huntsd.org  
\_\_\_\_\_  
Contact Person E-mail Address

(814)643-6244  
\_\_\_\_\_  
Contact Person Fax Number

**Audit Certification**  
**Annual Financial Report:**  
For Fiscal Year Ending **6/30/2018**  
**(Pursuant to PA School Code Section 218(b))**

LEA Name : **Huntingdon Area SD**  
AUN Number : **111312503**  
County : **Huntingdon**

Audit C
---------

This certification is applicable to the Annual Financial Report data submitted through the Consolidated Financial Reporting System on: 11/13/2018  
Date

**Auditing Firm:** Young, Oakes, Brown & Co. PC

**Auditor Contact Name:** John Huber, C  
**Auditor Phone:** 814-942-6191  
**Auditor E-mail:** jhuber@yobco.


CERTIFICATION: By signing this page I agree that the financial statements of the school have been properly audited as noted above pursuant to 24 Pa.C.S. § 218(b), and in the auditor's professional opinion, the Annual Financial Report (PDE-2057) submitted on the date referenced is materially correct and in accordance with the audited financial statements.

Chief School Administrator

  
\_\_\_\_\_  
Signature

11/13/18  
\_\_\_\_\_  
Date

Board Secretary

  
\_\_\_\_\_  
Signature

11/13  
\_\_\_\_\_  
Date

Faith Swanson  
\_\_\_\_\_  
Contact Person  
  
fswanson@huntsd.org  
\_\_\_\_\_  
Contact Person E-mail Address

(814)641-2120      Ext :  
\_\_\_\_\_  
Contact Person Telephone Number  
  
(814)643-6244  
\_\_\_\_\_  
Contact Person Fax Number

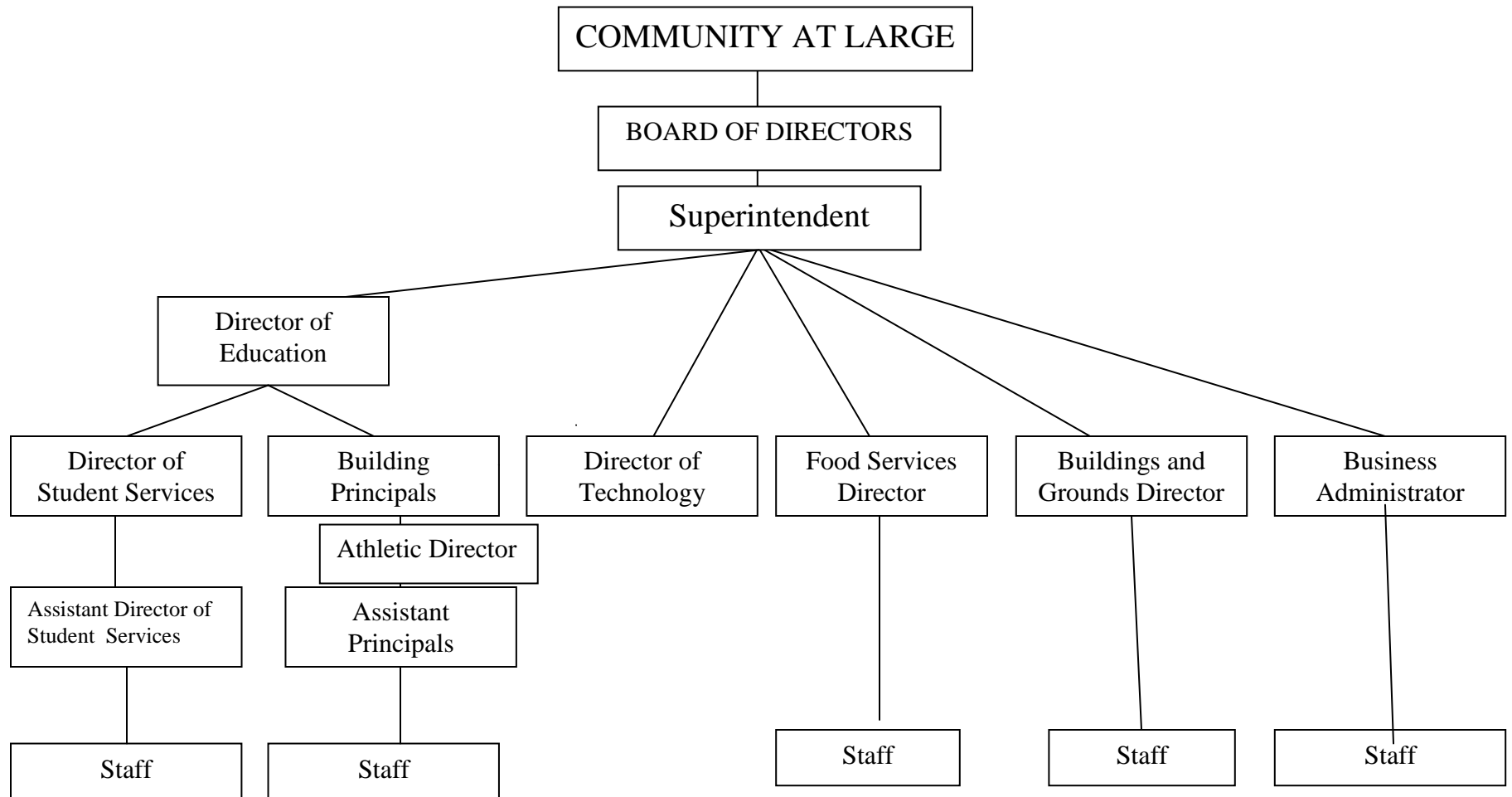
SECTION: ADMINISTRATIVE REGULATION

TITLE: ORGANIZATION CHART

ADOPTED:

REVISED: August 2015

# HUNTINGDON AREA SCHOOL DISTRICT



<u>Val Number</u>	<u>Description</u>	<u>Justification</u>
50116	SOIN: Additions have been reported for General Obligation Bond/Note or Authority Building Obligations however, comparable entries have not been reported in Revenue Accounts 9110, 9120, 9200 representing the proceeds for this Other Financing Source.  SOIN: GOB and ABO Additions: \$27,501.00 REG: Revenue code 9110,9120,9200: \$0.00	General Obligation Bonds were issued by the district to provide cash flows to the Huntingdon Career & Technology Center who is undergoing a building project. The HCCTC is paying all interest & will reimburse funds at end of project.
50160	SOIN: All Governmental Fund General Obligation Bonds must include an amount for Interest Paid during Fiscal Year. Correct data or enter a justification.	No interest was paid by the Huntingdon Area School District. Interest was paid by the Huntingdon County Career & Technology Center.
50180	SOIN: All Governmental Fund General Obligation Bonds must include an amount for Amount Due Within One Year (Principal and Interest). Correct data or enter a justification.	No funds due within next year. Bonds mature 7/2019. Funds will be repaid to district by HCCTC
50280	SOIN: Current Year AFR amount must equal Prior Year AFR amount.  SOIN, Beg Bal, Gen Obl Bnds: \$30,421,000.00 PY Ending Bal, Gen Obl Bnds: \$30,426,000.00	PY beginning balance for GOB 20152 was Incorrectly entered in 2016-17 SOIN after refinancing.
50450	SESS - 2350 Legal and Accounting Services: SESS Schedule amounts for Special Education vary from prior year by 40% or more. Correct the data or enter a justification.  SESS Schedule 2350: \$432.00 Prior Year SESS Schedule 2350: \$0.00	Highly variable; dependent on litigation against the district.
60134	ICR - Proprietary Expense Detail: Entries in Fund 51 and Object 100 must equal Statement of Revenues, Expenses, and Changes in Net Position (REP)  Prop Exp Dtl: Fund 51, Object 100: \$487,089.74 REP: Fund 51, Object 100: \$487,090.00	Rounding. REP does not allow cents, ICR proprietary expense detail requires.
60135	ICR - Proprietary Expense Detail: Entries in Fund 51 and Object 200 must equal Statement of Revenues, Expenses, and Changes in Net Position (REP)  Prop Exp Dtl: Fund 51, Object 200: \$313,642.94 REP: Fund 51, Object 200: \$313,643.00	Rounding. REP does not allow cents, ICR proprietary expense detail requires.
60137	ICR - Proprietary Expense Detail: Entries in Fund 51 and Object 400 must equal Statement of Revenues, Expenses, and Changes in Net Position (REP)  Prop Exp Dtl: Fund 51, Object 400: \$14,219.60 REP: Fund 51, Object 400: \$14,220.00	Rounding. REP does not allow cents, ICR proprietary expense detail requires.

60138	ICR - Proprietary Expense Detail: Entries in Fund 51 and Object 500 must equal Statement of Revenues, Expenses, and Changes in Net Position (REP)	Rounding. REP does not allow cents, ICR proprietary expense detail requires.
	Prop Exp Dtl: Fund 51, Object 500: \$719.28 REP: Fund 51, Object 500: \$719.00	
60139	ICR - Proprietary Expense Detail: Entries in Fund 51 and Object 600 must equal Statement of Revenues, Expenses, and Changes in Net Position (REP)	Rounding. REP does not allow cents, ICR proprietary expense detail requires.
	Prop Exp Dtl: Fund 51, Object 600: \$370,868.65 REP: Fund 51, Object 600: \$370,869.00	
60140	ICR - Proprietary Expense Detail: Entries in Fund 51 and Object 700 must equal Statement of Revenues, Expenses, and Changes in Net Position (REP)	Rounding. REP does not allow cents, ICR proprietary expense detail requires.
	Prop Exp Dtl: Fund 51, Object 700: \$9,328.87 REP: Fund 51, Object 700: \$9,329.00	
60141	ICR - Proprietary Expense Detail: Entries in Fund 51 and Object 800 must equal Statement of Revenues, Expenses, and Changes in Net Position (REP)	Rounding. REP does not allow cents, ICR proprietary expense detail requires.
	Prop Exp Dtl: Fund 51, Object 800: \$548.75 REP: Fund 51, Object 800: \$549.00	

Amounts Expressed in Whole Dollars

	<u>General Fund</u> <u>(10)</u>	<u>Public Purpose Trust</u> <u>(27)</u>	<u>Other Compt Approved</u> <u>(28)</u>	<u>Athletic / Activity</u> <u>(29)</u>	<u>Capital Reserve (690.</u> <u>1850)</u> <u>(31)</u>
<b>Assets And Deferred Outflows Of Resources</b>					
<b>Assets</b>					
0100 Cash and Cash Equivalents	347,804				
0110 Investments	6,218,914				
0120 Taxes Receivable	703,645				
0130 Due From Other Funds					
0141 Due From Other Governments					
0142 State Revenue Receivable	349,250				
0143 Federal Revenue Receivable	609,477				
0145 Other Intergovernmental Revenue Receivable					
0146 Due from Primary Government					
0147 Due from Component Unit					
0150 Other Receivables	41,421				
0170 Inventories					
0180 Prepaid Expenses (Expenditures)					
0190 Other Current Assets					
<b>Total Assets</b>	<b>\$8,270,511</b>				
0910 Deferred Outflows of Resources					
<b>Total Assets And Deferred Outflows Of Resources</b>	<b>\$8,270,511</b>				

Amounts Expressed in Whole Dollars

	<u>Capital Reserve (1431)</u> <u>(32)</u>	<u>Other Capital Projects</u> <u>Fund</u> <u>(39)</u>	<u>Debt Service</u> <u>(40)</u>	<u>Permanent</u> <u>(90)</u>	<u>Total Governmental</u> <u>Funds</u>
<b>Assets And Deferred Outflows Of Resources</b>					
<b>Assets</b>					
0100 Cash and Cash Equivalents	178,161				525,965
0110 Investments	3,020,468				9,239,382
0120 Taxes Receivable					703,645
0130 Due From Other Funds					
0141 Due From Other Governments					
0142 State Revenue Receivable					349,250
0143 Federal Revenue Receivable					609,477
0145 Other Intergovernmental Revenue Receivable					
0146 Due from Primary Government					
0147 Due from Component Unit					
0150 Other Receivables					41,421
0170 Inventories					
0180 Prepaid Expenses (Expenditures)					
0190 Other Current Assets					
<b>Total Assets</b>	<b>\$3,198,629</b>				<b>\$11,469,140</b>
0910 Deferred Outflows of Resources					
<b>Total Assets And Deferred Outflows Of Resources</b>	<b>\$3,198,629</b>				<b>\$11,469,140</b>

Amounts Expressed in Whole Dollars

<u>General Fund</u>	<u>Public Purpose Trust</u>	<u>Other Compt Approved</u>	<u>Athletic / Activity</u>	<u>Capital Reserve (690.</u>
<u>(10)</u>	<u>(27)</u>	<u>(28)</u>	<u>(29)</u>	<u>1850)</u>
				<u>(31)</u>

**Liabilities And Deferred Inflows Of Resources And Fund Balances**

**Liabilities**

0400 Due to Other Funds	
0411 Due to Other Governments	41,482
0412 Due to Primary Government	
0413 Due to Component Unit	
0420 Accounts Payable	564,495
0430 Contracts Payable	
0440 Current Portion of Long-Term Debt	
0450 Short-Term Payables	
0461 Accrued Salaries and Benefits	1,561,484
0462 Payroll Deductions and Withholding	1,164,085
0480 Unearned Revenues	
0490 Other Current Liabilities	24,055

**Total Liabilities** **\$3,355,601**

0950 Deferred Inflows of Resources	373,037
------------------------------------	---------

**Fund Balances**

0810 Nonspendable Fund Balance	
0820 Restricted Fund Balance	
0830 Committed Fund Balance	
0840 Assigned Fund Balance	3,437,629
0850 Unassigned Fund Balance	1,104,244

**Total Fund Balances** **\$4,541,873**

**Total Liabilities, Deferred Inflows Of Resources And Fund Balances** **\$8,270,511**



Amounts Expressed in Whole Dollars	<u>Capital Reserve (1431)</u> <u>(32)</u>	<u>Other Capital Projects</u> <u>Fund</u> <u>(39)</u>	<u>Debt Service</u> <u>(40)</u>	<u>Permanent</u> <u>(90)</u>	<u>Total Governmental</u> <u>Funds</u>
<b>Liabilities And Deferred Inflows Of Resources And Fund Balances</b>					
<b>Liabilities</b>					
0400 Due to Other Funds					41,482
0411 Due to Other Governments					41,482
0412 Due to Primary Government					
0413 Due to Component Unit					
0420 Accounts Payable	320,811				885,306
0430 Contracts Payable					
0440 Current Portion of Long-Term Debt					
0450 Short-Term Payables					
0461 Accrued Salaries and Benefits					1,561,484
0462 Payroll Deductions and Withholding					1,164,085
0480 Unearned Revenues					
0490 Other Current Liabilities					24,055
<b>Total Liabilities</b>	<b>\$320,811</b>				<b>\$3,676,412</b>
0950 Deferred Inflows of Resources					373,037
<b>Fund Balances</b>					
0810 Nonspendable Fund Balance					
0820 Restricted Fund Balance	2,877,818				2,877,818
0830 Committed Fund Balance					
0840 Assigned Fund Balance					3,437,629
0850 Unassigned Fund Balance					1,104,244
<b>Total Fund Balances</b>	<b>\$2,877,818</b>				<b>\$7,419,691</b>
<b>Total Liabilities, Deferred Inflows Of Resources And Fund Balances</b>	<b>\$3,198,629</b>				<b>\$11,469,140</b>

Amounts Expressed in Whole Dollars	<u>General Fund</u> <u>(10)</u>	<u>Public Purpose Trust</u> <u>(27)</u>	<u>Other Compt Approved</u> <u>(28)</u>	<u>Athletic / Activity</u> <u>(29)</u>	<u>Capital Reserve (690.</u> <u>1850)</u> <u>(31)</u>
<b>Revenues</b>					
6000 Revenue from Local Sources	12,675,653				
7000 Revenue from State Sources	14,779,022				
8000 Revenue from Federal Sources	1,003,942				
<b>Total Revenues</b>	<b>\$28,458,617</b>				
<b>Expenditures</b>					
1000 Instruction	16,320,761				
2000 Support Services	9,379,512				
3000 Operation of Non-Instructional Services	594,290				
4000 Facilities Acquisition, Construction and Improvement Services					
5110 Debt Service	2,267,370				
5130 Refund of Prior Year Revenues / Receipts	1,464				
<b>Total Expenditures</b>	<b>\$28,563,397</b>				
<b>Excess (Deficiency) Of Revenues Over Expenditures</b>	<b>(\$104,780)</b>				
<b>Other Financing Sources (Uses)</b>					
9110 Face Value of Bonds Issued					
9120 Proceeds from Refunding of Bonds					
9130 Bond Premiums					
9200 Proceeds from Extended-Term Financing					
9300 Interfund Transfers - IN					
9400 Sale of or Compensation for Loss of Fixed Assets					
9710 Transfers from Component Units					
9720 Transfers from Primary Governments					
9910 Other Financing Sources Not Listed in the 9000 Series					
9990 Insurance Recoveries					
5120 Debt Service – Refunded Bonds					
5150 Bond Discounts					
5200 Interfund Transfers – Out	150,000				
5300 Transfers Out to Component Units/Primary Governments					
<b>Total Other Financing Sources (Uses)</b>	<b>(\$150,000)</b>				

Amounts Expressed in Whole Dollars	<u>Capital Reserve (1431)</u> <u>(32)</u>	<u>Other Capital Projects</u> <u>Fund</u> <u>(39)</u>	<u>Debt Service</u> <u>(40)</u>	<u>Permanent</u> <u>(90)</u>	<u>Total Governmental</u> <u>Funds</u>
<b>Revenues</b>					
6000 Revenue from Local Sources	27,666				12,703,319
7000 Revenue from State Sources					14,779,022
8000 Revenue from Federal Sources					1,003,942
<b>Total Revenues</b>	<b>\$27,666</b>				<b>\$28,486,283</b>
<b>Expenditures</b>					
1000 Instruction					16,320,761
2000 Support Services	3,490				9,383,002
3000 Operation of Non-Instructional Services					594,290
4000 Facilities Acquisition, Construction and Improvement Services	372,786				372,786
5110 Debt Service					2,267,370
5130 Refund of Prior Year Revenues / Receipts					1,464
<b>Total Expenditures</b>	<b>\$376,276</b>				<b>\$28,939,673</b>
<b>Excess (Deficiency) Of Revenues Over Expenditures</b>	<b>(\$348,610)</b>				<b>(\$453,390)</b>
<b>Other Financing Sources (Uses)</b>					
9110 Face Value of Bonds Issued					
9120 Proceeds from Refunding of Bonds					
9130 Bond Premiums					
9200 Proceeds from Extended-Term Financing					
9300 Interfund Transfers - IN					
9400 Sale of or Compensation for Loss of Fixed Assets					
9710 Transfers from Component Units					
9720 Transfers from Primary Governments					
9910 Other Financing Sources Not Listed in the 9000 Series					
9990 Insurance Recoveries					
5120 Debt Service – Refunded Bonds					
5150 Bond Discounts					
5200 Interfund Transfers – Out					150,000
5300 Transfers Out to Component Units/Primary Governments					
<b>Total Other Financing Sources (Uses)</b>					<b>(\$150,000)</b>

Amounts Expressed in Whole Dollars	<u>General Fund</u> <u>(10)</u>	<u>Public Purpose Trust</u> <u>(27)</u>	<u>Other Compt Approved</u> <u>(28)</u>	<u>Athletic / Activity</u> <u>(29)</u>	<u>Capital Reserve</u> <u>(690.</u> <u>1850)</u> <u>(31)</u>
<b>Special And Extraordinary Items</b>					
9920 Special Items – Gains					
9930 Extraordinary Items – Gains					
5520 Special Items – Losses					
5530 Extraordinary Items – Losses					
<b>Net Change In Fund Balances</b>	<b>(\$254,780)</b>				
<b>Fund Balance</b>					
0001 Fund Balance - Beginning of Fiscal Year	4,796,652				
<b>Fund Balance - End Of Year</b>	<b>\$4,541,872</b>				

Amounts Expressed in Whole Dollars	<u>Capital Reserve (1431)</u> <u>(32)</u>	<u>Other Capital Projects</u> <u>Fund</u> <u>(39)</u>	<u>Debt Service</u> <u>(40)</u>	<u>Permanent</u> <u>(90)</u>	<u>Total Governmental</u> <u>Funds</u>
<b>Special And Extraordinary Items</b>					
9920 Special Items – Gains					
9930 Extraordinary Items – Gains					
5520 Special Items – Losses					
5530 Extraordinary Items – Losses					
<b>Net Change In Fund Balances</b>	<b>(\$348,610)</b>				<b>(\$603,390)</b>
<b>Fund Balance</b>					
0001 Fund Balance - Beginning of Fiscal Year		3,226,427			8,023,079
<b>Fund Balance - End Of Year</b>		<b>\$2,877,817</b>			<b>\$7,419,689</b>

Amounts Expressed in Whole Dollars	<u>Food Service</u> <u>(51)</u>	<u>Child Care</u> <u>Operations</u> <u>(52)</u>	<u>Other Enterprise</u> <u>(58)</u>	<u>TOTAL</u>	<u>Internal Service</u> <u>(60)</u>
<b>Assets And Deferred Outflows Of Resources</b>					
<b>Current Assets</b>					
0100 Cash and Cash Equivalents	146,304			146,304	
0110 Investments					
0130 Due From Other Funds	41,491			41,491	
0141 Due From Other Governments	2,076			2,076	
0142 State Revenue Receivable					
0143 Federal Revenue Receivable					
0146 Due from Primary Government					
0147 Due from Component Unit					
0150 Other Receivables					
0170 Inventories	47,978			47,978	
0180 Prepaid Expenses (Expenditures)					
0190 Other Current Assets					
<b>Total Current Assets</b>	<b>\$237,849</b>			<b>\$237,849</b>	
<b>Noncurrent Assets</b>					
0211 Land					
0212 Site Improvements (Net)					
0220 Buildings and Building Improvements (Net)					
0230 Machinery, Equipment and Furniture (Net)	14,880			14,880	
0250 Construction in Progress					
0260 Long Term Prepayments					
0290 Other Noncurrent Assets					
<b>Total Noncurrent Assets</b>	<b>\$14,880</b>			<b>\$14,880</b>	
0910 Deferred Outflows of Resources					
<b>Total Assets And Deferred Outflows Of Resources</b>	<b>\$252,729</b>			<b>\$252,729</b>	

Amounts Expressed in Whole Dollars	<u>Food Service</u> <u>(51)</u>	<u>Child Care</u> <u>Operations</u> <u>(52)</u>	<u>Other Enterprise</u> <u>(58)</u>	<u>TOTAL</u>	<u>Internal Service</u> <u>(60)</u>
<b>Liabilities And Deferred Inflows Of Resources And Net Position</b>					
<b>Current Liabilities</b>					
0400 Due to Other Funds					
0411 Due to Other Governments					
0413 Due to Component Unit					
0420 Accounts Payable	4,445			4,445	
0430 Contracts Payable					
0440 Current Portion of Long-Term Debt					
0450 Short-Term Payables					
0461 Accrued Salaries and Benefits	41,460			41,460	
0462 Payroll Deductions and Withholding					
0480 Unearned Revenues	9,861			9,861	
0490 Other Current Liabilities					
<b>Total Current Liabilities</b>	<b>\$55,766</b>			<b>\$55,766</b>	
<b>Noncurrent Liabilities</b>					
0510 Bonds Payable					
0520 Extended-Term Financing Agreements Payable					
0530 Lease-Purchase Obligations					
0540 Accumulated Compensated Absences	16,672			16,672	
0550 Authority Lease Obligations					
0560 Other Post-Employment Benefits (OPEB)	257,658			257,658	
0570 Net Pension Liability					
0599 Other Noncurrent Liabilities					
<b>Total Noncurrent Liabilities</b>	<b>\$274,330</b>			<b>\$274,330</b>	
<b>Total Liabilities</b>	<b>\$330,096</b>			<b>\$330,096</b>	
0950 Deferred Inflows of Resources					
<b>Net Position</b>					
0791 Net Investment in Capital Assets	14,880			14,880	
0008 Restricted Net Position (0792 – 0798)					
0799 Unrestricted Net Position	(92,247)			(92,247)	
<b>Total Net Position</b>	<b>(\$77,367)</b>			<b>(\$77,367)</b>	
<b>Total Liabilities And Deferred Inflows Of Resources And Net Position</b>	<b>\$252,729</b>			<b>\$252,729</b>	

Amounts Expressed in Whole Dollars	<u>Food Service</u> <u>(51)</u>	<u>Child Care Operations</u> <u>(52)</u>	<u>Other Enterprise</u> <u>(58)</u>	<u>TOTAL</u>	<u>Internal Service</u> <u>(60)</u>
<b>Operating Revenues</b>					
6600 Food Service Revenue	285,542			285,542	
0071 Charges for Services					
0072 Other Operating Revenue					
<b>Total Operating Revenues</b>	<b>\$285,542</b>			<b>\$285,542</b>	
<b>Operating Expenses</b>					
100 Personnel Services – Salaries	487,090			487,090	
200 Personnel Services – Employee Benefits	313,643			313,643	
300 Purchased Professional and Technical Services					
400 Purchased Property Services	14,220			14,220	
500 Other Purchased Services	719			719	
600 Supplies	370,869			370,869	
740 Depreciation	9,329			9,329	
810 Dues and Fees	549			549	
890 Miscellaneous Expenditures					
<b>Total Operating Expenses</b>	<b>\$1,196,419</b>			<b>\$1,196,419</b>	
<b>Operating Income (Loss)</b>	<b>(\$910,877)</b>			<b>(\$910,877)</b>	
<b>Non Operating Revenues (Expenses)</b>					
6500 Earnings on Investments					
6920 Contributions and Donations from Private Sources					
6930 Gains or Losses on Sale of Fixed Assets					
6991 Refunds of a Prior Year Expenditure					
7000 Revenue from State Sources	27,403			27,403	
8000 Revenue from Federal Sources	545,062			545,062	
820 Claims and Judgments Against the LEA					
830 Interest					
<b>TOTAL Non Operating Revenues (Expenses)</b>	<b>\$572,465</b>			<b>\$572,465</b>	
<b>Income (Loss) Before Contributions And Transfers</b>	<b>(\$338,412)</b>			<b>(\$338,412)</b>	



Amounts Expressed in Whole Dollars	<u>Food Service</u> <u>(51)</u>	<u>Child Care Operations</u> <u>(52)</u>	<u>Other Enterprise</u> <u>(58)</u>	<u>TOTAL</u>	<u>Internal Service</u> <u>(60)</u>
<b>Contributions, Transfers, and Special and Extraordinary Items</b>					
5200 Interfund Transfers – Out					
5300 Transfers Out to Component Units/Primary Governments					
5520 Special Items – Losses					
5530 Extraordinary Items – Losses					
9300 Interfund Transfers - IN	150,000			150,000	
9500 Capital Contributions					
9700 Transfers IN From Component Units/Primary Governments					
9920 Special Items – Gains					
9930 Extraordinary Items – Gains					
<b>Change In Net Position</b>	<b>(\$188,412)</b>			<b>(\$188,412)</b>	
0002 Net Position - Beginning of Fiscal Year	111,045			111,045	
0003 Accounting Changes / Residual Equity Transfers					
<b>Net Position - End Of Year</b>	<b>(\$77,367)</b>			<b>(\$77,367)</b>	

Amounts Expressed in Whole Dollars	<u>Food Service</u> <u>(51)</u>	<u>Child Care Operations</u> <u>(52)</u>	<u>Other Enterprise</u> <u>(58)</u>	<u>TOTAL</u>	<u>Internal Service(60)</u>
<b>Cash Flows From Operating Activities</b>					
0011 Cash Receipts From Users	285,441			285,441	
0012 Cash Receipts From Assessments Made to Other Funds					
0013 Cash Receipts From Earnings on Investments					
0014 Cash Receipts From Other Operating Revenue					
0015 Cash Payments To Employees For Services	686,956			686,956	
0016 Cash Payments For Insurance Claims					
0017 Cash Payments To Suppliers For Goods and Services	366,903			366,903	
0018 Cash Payments For Other Operating Expenses	15,488			15,488	
<b>Net Cash Provided By (Used For) Operating Activities</b>	<b>(\$783,906)</b>			<b>(\$783,906)</b>	
<b>Cash Flows From Non-Capital Financing Activities</b>					
0021 Receipts From Local Sources - 6000					
0022 Receipts From State Sources - 7000	27,297			27,297	
0023 Receipts From Federal Sources -8000	543,091			543,091	
0024 Notes and Loans Received (Repaid)					
0025 Interest Paid on Notes/Loans - 5100-830					
0026 Operating Transfers In (Out)/Residual Equity Trans					
0027 Operating Transfers In (Out) Primary Government / Comp Unit	150,000			150,000	
0028 Receipts From Refund of Prior Year Expenditures - 6991					
0029 Special and Extraordinary Gains (losses)					
0030 Receipts from Insurance Recoveries -9990					
<b>Net Cash Prov By (Used for) Non-Capital Financing Activities</b>	<b>\$720,388</b>			<b>\$720,388</b>	
<b>Cash Flows From Capital and Related Financing Activities</b>					
0031 Payments For Fac Acq, Const, and Imp - 4000					
0032 Gain / (Loss) on Sale of Fixed Assets - 6930					
0033 Proceeds From Extended Term Financing - 9200					
0034 Principal Paid on Financing Agreements					
0035 Interest Paid on Financing Agreements - 5100-830					
0036 (Inc) Dec in Contributed Capital					
<b>Net Cash Prov By (Used for) Capital and Related Financing Activities</b>					
<b>Cash Flows From Investing Activities</b>					
0041 Earnings on Investments - 6500					
0042 Purchase of Inv Securities / Deposits to Inv Pools					
0043 Receipts From Investment Pool Withdrawals					
0044 Proceeds from Sale and Maturity of Inv Securities					

LEA : 111312503    Huntingdon Area SD

Printed 11/19/2018 8:45:04 AM

0045 Loans Received (Paid)

**Net Cash Prov By (Used for) Investing Activities**

	<u>Food Service</u> <u>(51)</u>	<u>Child Care Operations</u> <u>(52)</u>	<u>Other Enterprise</u> <u>(58)</u>	<u>TOTAL</u>	<u>Internal Service</u> <u>(60)</u>
<b>Net Increase (Decrease) in Cash Flows</b>	<b>(63,518)</b>			<b>(63,518)</b>	
0004 Cash and Cash Equivalents Beginning of Year	209,822			209,822	
<b>Cash and Cash Equivalents at Year End</b>	<b>\$146,304</b>			<b>\$146,304</b>	

**Reconciliation of Operating Income (Loss) To Net Cash Provided by (Used For) Operating Activities**

0005 Operating Income (Loss) per REP	(910,877)			(910,877)	
<b>Adjustments</b>					
0051 Depreciation and Net Amortization	9,329			9,329	
0052 Provision for Uncollectible Accounts					
0053 Other Adjustments					
<b>Effect of Changes in Assets, Liabilities, Deferred Outflows and Deferred Inflows</b>					
0054 (Inc) Dec In Accounts Receivable (0120-0150)	(13,033)			(13,033)	
0055 Advances to Other Funds (0160)					
0056 (Inc) Dec in Inventories (0170)	17,998			17,998	
0057 (Inc) Dec in Prepaid Expenses (0180)					
0058 (Inc) Dec in Other Current or Noncurrent Assets					
0064 Deferred Outflows (0910)					
0059 Inc (Dec) in Accounts Payable (0400-0450)	4,445			4,445	
0060 Inc (Dec) in Accrued Salaries/Benefits (0461)	(44)			(44)	
0065 Inc (Dec) in Net Pension Liabilities (0570)					
0066 Inc (Dec) in Other Postemp Benefit Oblig (0560)	113,821			113,821	
0061 Inc (Dec) in Payroll Deductions/Withholding (0462)					
0062 Inc (Dec) in Unearned Revenue (0480)	(101)			(101)	
0063 Inc (Dec) in Other Current or Noncurrent Liabilities	(5,446)			(5,446)	
0067 Deferred Inflows (0950)					
<b>Total Adjustments</b>	<b>\$126,969</b>			<b>\$126,969</b>	
<b>Cash Provided By (Used for) Total</b>	<b>(\$783,908)</b>			<b>(\$783,908)</b>	

**COMBINED STATEMENT OF CASH FLOWS  
SCHEDULE OF NONCASH INVESTING, CAPITAL, AND FINANCING ACTIVITIES**

Explanation of Transaction and Balance Sheet Effect	Amount
<b>Total</b>	

LEA : 111312503    Huntingdon Area SD

Printed 11/19/2018 8:45:05 AM

Amounts Expressed in Whole Dollars

Private Purpose Trust  
(71)

Investment Trust  
(72)

Pension Trust  
(73)

Activity  
(81)

**Assets And Deferred Outflows Of Resources**

**Assets**

0100 Cash and Cash Equivalents				56,448
0110 Investments				
0130 Due From Other Funds				
0147 Due from Component Unit				
0150 Other Receivables				
0170 Inventories				
0180 Prepaid Expenses (Expenditures)				
0190 Other Current Assets				
0220 Buildings and Building Improvements (Net)				
0230 Machinery, Equipment and Furniture (Net)				

<b>Total Assets</b>				<b>\$56,448</b>
---------------------	--	--	--	-----------------

0910 Deferred Outflows of Resources

<b>Total Assets And Deferred Outflows Of Resources</b>				<b>\$56,448</b>
--	--	--	--	-----------------

LEA : 111312503    Huntingdon Area SD

Printed 11/19/2018 8:45:05 AM

Amounts Expressed in Whole Dollars

	<u>Other Agency</u> <u>(89)</u>	<u>Discrete Component Units</u> <u>(98)</u>	<u>Discrete Component Units</u> <u>(99)</u>	<u>Total Fiduciary Funds</u>
<b>Assets And Deferred Outflows Of Resources</b>				
<b>Assets</b>				
0100 Cash and Cash Equivalents				56,448
0110 Investments				
0130 Due From Other Funds				
0147 Due from Component Unit				
0150 Other Receivables				
0170 Inventories				
0180 Prepaid Expenses (Expenditures)				
0190 Other Current Assets				
0220 Buildings and Building Improvements (Net)				
0230 Machinery, Equipment and Furniture (Net)				
<b>Total Assets</b>				<b>\$56,448</b>
0910 Deferred Outflows of Resources				
<b>Total Assets And Deferred Outflows Of Resources</b>				<b>\$56,448</b>

LEA : 111312503    Huntingdon Area SD

Printed 11/19/2018 8:45:05 AM

Amounts Expressed in Whole Dollars	<u>Private Purpose Trust</u> (71)	<u>Investment Trust</u> (72)	<u>Pension Trust</u> (73)	<u>Activity</u> (81)
<b>Liabilities, Deferred Inflows Of Resources And Net Position</b>				
<b>Liabilities</b>				
0400 Due to Other Funds				
0411 Due to Other Governments				
0412 Due to Primary Government				
0413 Due to Component Unit				
0420 Accounts Payable				
0430 Contracts Payable				
0450 Short-Term Payables				
0461 Accrued Salaries and Benefits				
0462 Payroll Deductions and Withholding				
0480 Unearned Revenues				
0490 Other Current Liabilities				56,448
<b>Total Liabilities</b>				<b>\$56,448</b>
<b>Net Position</b>				
0791 Net Investment in Capital Assets				
0009 Restricted Net Position (0792 – 0798)				
0799 Unrestricted Net Position				
<b>Total Net Position</b>				
<b>Total Liabilities, Deferred Inflows Of Resources And Net Position</b>				<b>\$56,448</b>



LEA : 111312503    Huntingdon Area SD

Printed 11/19/2018 8:45:05 AM

Amounts Expressed in Whole Dollars

<u>Other Agency</u>	<u>Discrete Component Units</u>	<u>Discrete Component Units</u>	<u>Total Fiduciary Funds</u>
(89)	(98)	(99)	

**Liabilities, Deferred Inflows Of Resources And Net Position**

**Liabilities**

0400 Due to Other Funds				
0411 Due to Other Governments				
0412 Due to Primary Government				
0413 Due to Component Unit				
0420 Accounts Payable				
0430 Contracts Payable				
0450 Short-Term Payables				
0461 Accrued Salaries and Benefits				
0462 Payroll Deductions and Withholding				
0480 Unearned Revenues				
0490 Other Current Liabilities				56,448

<b>Total Liabilities</b>				<b>\$56,448</b>
--------------------------	--	--	--	-----------------

0950 Deferred Inflows of Resources

**Net Position**

0791 Net Investment in Capital Assets				
0009 Restricted Net Position (0792 – 0798)				
0799 Unrestricted Net Position				

<b>Total Net Position</b>				
---------------------------	--	--	--	--

<b>Total Liabilities, Deferred Inflows Of Resources And Net Position</b>				<b>\$56,448</b>
--	--	--	--	-----------------

	<u>Revenue Reported In Current Year</u>	<u>Current Year Tax Accrual</u>	<u>Prior Year Tax Accrual</u>	<u>Taxes Collected In Current Year</u>
<b><u>Revenue from Local Sources</u></b>				
6111 Current Real Estate Taxes	8,020,966.20			8,020,966.20
6113 Public Utility Realty Taxes	11,295.79			11,295.79
6114 Payments in Lieu of Current Taxes - State / Local	83,416.31			83,416.31
6120 Current Per Capita Taxes, Section 679	38,036.90			38,036.90
6131 Current Act 1 Earned Income Taxes	1,114,827.73	43,196.74	42,353.08	1,113,984.07
6141 Current Act 511 Per Capita Taxes	39,684.21			39,684.21
6143 Current Act 511 Local Services Taxes	28,482.47		946.64	29,429.11
6151 Current Act 511 Earned Income Taxes	1,130,869.17	43,196.74	42,353.08	1,130,025.51
6153 Current Act 511 Real Estate Transfer Taxes	162,842.84	13,578.44	11,920.13	161,184.53
6411 Delinquent Real Estate Taxes	776,067.63	230,426.39	232,999.93	778,641.17
6420 Delinquent Per Capita Taxes, Section 679	4,339.09	105.00	15.75	4,249.84
6431 Delinquent Act 1 Earned Income Taxes	301,990.61			301,990.61
6440 Delinquent Local Enabling Taxes - Flat Rate Assessments	4,806.18			4,806.18
6451 Delinquent Act 511 Earned Income Taxes	306,758.28	105.00	20.75	306,674.03
6500 Earnings on Investments	71,726.63			
6700 Revenues from LEA Activities	70,582.66			
6832 Federal IDEA Revenue Received as Pass Through	391,329.84			
6910 Rentals	15,822.50			
6920 Contributions and Donations from Private Sources	20,514.63			
6941 Regular Day School Tuition	13,055.00			
6942 Summer School Tuition	1,020.00			
6991 Refunds of a Prior Year Expenditure	46,633.99			
6999 Other Revenues Not Specified Above	20,584.39			
<b>TOTAL Revenue from Local Sources</b>	<b>\$12,675,653.05</b>	<b>\$330,608.31</b>	<b>\$330,609.36</b>	<b>\$12,024,384.46</b>

**Revenue Reported  
In Current Year**

**Revenue from State Sources**

7110 Basic Education Funding	7,997,119.81		
7160 Tuition for Orphans Subsidy	41,924.33		
7271 Special Education funds for School-Aged Pupils	1,464,523.49		
7311 Pupil Transportation Subsidy	1,326,143.17		
7312 Nonpublic and Charter School Pupil Transportation Subsidy	70,455.00		
7320 Rental and Sinking Fund Payments / Building Reimbursement Subsidy	435,305.98		
7330 Health Services (Medical, Dental, Nurse, Act 25)	34,535.75		
7340 State Property Tax Reduction Allocation	670,698.47		
7505 Ready to Learn Block Grant	334,138.00		
7599 Other State Revenue Not Listed Elsewhere in the 7000 Series	1,061.72		
7810 State Share of Social Security and Medicare Taxes	345,914.77		
7820 State Share of Retirement Contributions	2,057,201.80		
<b>TOTAL Revenue from State Sources</b>	<b>\$14,779,022.29</b>		

**Revenue Reported  
In Current Year**

**Revenue from Federal Sources**

8514 NCLB, Title I - Improving the Academic Achievement of the Disadvantaged	621,279.96			
8515 NCLB, Title II - Preparing, Training and Recruiting High Quality Teachers and Principals	99,267.60			
8517 NCLB, Title IV - 21St Century Schools	14,220.00			
8690 Other Restricted Federal Grants-in-Aid Through the Commonwealth of PA	174.00			
8810 School-Based Access Medicaid Reimbursement Program (SBAP) Reimbursements (Access)	261,483.93			
8820 Medical Assistance Reimbursement for Administrative Claiming (Quarterly) Program	7,516.93			
<b>TOTAL Revenue from Federal Sources</b>	<b>\$1,003,942.42</b>			
<b>TOTAL FROM ALL SOURCES</b>	<b>\$28,458,617.76</b>	<b>\$330,608.31</b>	<b>\$330,609.36</b>	<b>\$12,024,384.46</b>

Revenue from Local Sources	12,675,653.05
Revenue from State Sources	14,779,022.29
Revenue from Federal Sources	1,003,942.42
Other Financing Sources	
<b>TOTAL FROM ALL SOURCES</b>	<b>\$28,458,617.76</b>

**General Fund (10)**

	<u>Total</u>
<b>1000 Instruction</b>	
<b>100 Personnel Services – Salaries</b>	
100 Personnel Services – Salaries	7,514,596.25
<b>Total Personnel Services – Salaries</b>	<b>\$7,514,596.25</b>
<b>200 Personnel Services – Employee Benefits</b>	
210 Group Insurance – Contracted Provider	1,670,688.39
220 Social Security Contributions	551,126.54
230 PSERS Retirement Contributions	2,446,482.08
250 Unemployment Compensation	9,863.87
260 Workers’ Compensation	59,599.47
291 Other Retirement Plans	25,028.00
292 Health Savings Accounts	176,378.15
<b>Total Personnel Services – Employee Benefits</b>	<b>\$4,939,166.50</b>
<b>300 Purchased Professional and Technical Services</b>	
322 Professional Educational Services – Ius	71,072.53
323 Professional Educational Services – Other Educational Agencies	190,037.20
324 Professional Educational Services – Employee Training and Development Services	102.00
329 Professional Educational Services – Other	341,311.78
330 Other Professional Services	4,312.40
390 Other Purchased Professional and Technical Services	1,440.00
<b>Total Purchased Professional and Technical Services</b>	<b>\$608,275.91</b>
<b>400 Purchased Property Services</b>	
430 Repairs and Maintenance Services	4,126.28
440 Rentals	80,394.20
<b>Total Purchased Property Services</b>	<b>\$84,520.48</b>
<b>500 Other Purchased Services</b>	
510 Student Transportation Services	33,558.99
530 Communications	11.45
561 Tuition To Other School Districts Within the State	40,035.21
562 Tuition To Pennsylvania Charter Schools	1,828,450.21
564 Tuition To Career and Technology Centers	625,497.00
567 Tuition To Approved Private Schools (APS) and PA Chartered Schools for the Deaf and Blind	230,226.34
568 Tuition To Private Residential Rehabilitative Institutions (PRRI) [In-State] and Detention Centers	28,488.46
569 Tuition – Other	1,064.00
580 Travel	12,981.86
<b>Total Other Purchased Services</b>	<b>\$2,800,313.52</b>
<b>600 Supplies</b>	
610 General Supplies	166,025.03
620 Energy	395.46
640 Books and Periodicals	43,697.29
650 Supplies & Fees – Technology Related	136,532.99
<b>Total Supplies</b>	<b>\$346,650.77</b>
<b>700 Property</b>	
752 Capital Equipment – Original and Additional	24,665.11

**General Fund (10)**

<b>1000 Instruction</b>	<u><b>Total</b></u>
<b>Total Property</b>	<b>\$24,665.11</b>
<b>800 <u>Other Objects</u></b>	
810 Dues and Fees	2,572.50
<b>Total Other Objects</b>	<b>\$2,572.50</b>
<b>Total 1000 Instruction</b>	<b>\$16,320,761.04</b>

**General Fund (10)**

**1100 Regular Programs – Elementary / Secondary**

	<u>Elementary</u>	<u>Secondary</u>	<u>Federal</u>	<u>Total</u>
<b>100 Personnel Services – Salaries</b>				
100 Personnel Services – Salaries	2,177,329.91	2,700,506.29	406,424.62	5,284,260.82
<b>Total Personnel Services – Salaries</b>	<b>\$2,177,329.91</b>	<b>\$2,700,506.29</b>	<b>\$406,424.62</b>	<b>\$5,284,260.82</b>
<b>200 Personnel Services – Employee Benefits</b>				
210 Group Insurance – Contracted Provider	461,108.66	581,883.72	61,835.14	1,104,827.52
220 Social Security Contributions	159,771.58	198,316.41	29,981.07	388,069.06
230 PSERS Retirement Contributions	775,638.43	879,574.77	66,186.15	1,721,399.35
250 Unemployment Compensation	1,554.01	1,612.42	750.10	3,916.53
260 Workers' Compensation	13,710.51	17,320.49	4,876.95	35,907.95
291 Other Retirement Plans	11,278.00	13,750.00		25,028.00
292 Health Savings Accounts	50,676.19	59,306.00	5,460.00	115,442.19
<b>Total Personnel Services – Employee Benefits</b>	<b>\$1,473,737.38</b>	<b>\$1,751,763.81</b>	<b>\$169,089.41</b>	<b>\$3,394,590.60</b>
<b>300 Purchased Professional and Technical Services</b>				
322 Professional Educational Services – Ius	276.00	275.00		551.00
323 Professional Educational Services – Other Educational Agencies	8,197.20			8,197.20
329 Professional Educational Services – Other	84,155.77	139,897.53	12,336.47	236,389.77
330 Other Professional Services		1,706.85	2,605.55	4,312.40
<b>Total Purchased Professional and Technical Services</b>	<b>\$92,628.97</b>	<b>\$141,879.38</b>	<b>\$14,942.02</b>	<b>\$249,450.37</b>
<b>400 Purchased Property Services</b>				
430 Repairs and Maintenance Services	951.13	2,875.19		3,826.32
440 Rentals	32,739.60	47,654.60		80,394.20
<b>Total Purchased Property Services</b>	<b>\$33,690.73</b>	<b>\$50,529.79</b>		<b>\$84,220.52</b>
<b>500 Other Purchased Services</b>				
510 Student Transportation Services	3,414.77	9,604.55		13,019.32
530 Communications		11.45		11.45
561 Tuition To Other School Districts Within the State		27,482.62		27,482.62
562 Tuition To Pennsylvania Charter Schools	384,676.71	470,600.01		855,276.72
568 Tuition To Private Residential Rehabilitative Institutions (PRRI) [In-State] and Detention Centers	5,320.00	4,745.00		10,065.00
569 Tuition – Other	1,064.00			1,064.00
580 Travel	386.40	6,785.86		7,172.26
<b>Total Other Purchased Services</b>	<b>\$394,861.88</b>	<b>\$519,229.49</b>		<b>\$914,091.37</b>
<b>600 Supplies</b>				
610 General Supplies	44,233.42	80,485.92	15,132.46	139,851.80
640 Books and Periodicals	1,231.16	4,321.53		5,552.69
650 Supplies & Fees – Technology Related	6,854.38	1,700.66	127,977.95	136,532.99
<b>Total Supplies</b>	<b>\$52,318.96</b>	<b>\$86,508.11</b>	<b>\$143,110.41</b>	<b>\$281,937.48</b>
<b>700 Property</b>				
752 Capital Equipment – Original and Additional		19,574.47		19,574.47
<b>Total Property</b>		<b>\$19,574.47</b>		<b>\$19,574.47</b>
<b>800 Other Objects</b>				
810 Dues and Fees	272.00	1,473.00		1,745.00



**General Fund (10)**

**1100 Regular Programs – Elementary / Secondary**

	<u>Elementary</u>	<u>Secondary</u>	<u>Federal</u>	<u>Total</u>
<b>Total Other Objects</b>	<b>\$272.00</b>	<b>\$1,473.00</b>		<b>\$1,745.00</b>
<b>Total 1100 Regular Programs – Elementary / Secondary</b>	<b>\$4,224,839.83</b>	<b>\$5,271,464.34</b>	<b>\$733,566.46</b>	<b>\$10,229,870.63</b>

**General Fund (10)**

**1110 Regular Programs**

	<u>Elementary</u>	<u>Secondary</u>	<u>Federal</u>	<u>Total</u>
<b>100 Personnel Services – Salaries</b>				
100 Personnel Services – Salaries	2,177,329.91	2,700,506.29		4,877,836.20
<b>Total Personnel Services – Salaries</b>	<b>\$2,177,329.91</b>	<b>\$2,700,506.29</b>		<b>\$4,877,836.20</b>
<b>200 Personnel Services – Employee Benefits</b>				
210 Group Insurance – Contracted Provider	461,108.66	581,883.72		1,042,992.38
220 Social Security Contributions	159,771.58	198,316.41		358,087.99
230 PSERS Retirement Contributions	775,638.43	879,574.77		1,655,213.20
250 Unemployment Compensation	1,554.01	1,612.42		3,166.43
260 Workers' Compensation	13,710.51	17,320.49		31,031.00
291 Other Retirement Plans	11,278.00	13,750.00		25,028.00
292 Health Savings Accounts	50,676.19	59,306.00		109,982.19
<b>Total Personnel Services – Employee Benefits</b>	<b>\$1,473,737.38</b>	<b>\$1,751,763.81</b>		<b>\$3,225,501.19</b>
<b>300 Purchased Professional and Technical Services</b>				
322 Professional Educational Services – Ius	276.00	275.00		551.00
323 Professional Educational Services – Other Educational Agencies	8,197.20			8,197.20
329 Professional Educational Services – Other	84,155.77	139,897.53		224,053.30
330 Other Professional Services		1,706.85		1,706.85
<b>Total Purchased Professional and Technical Services</b>	<b>\$92,628.97</b>	<b>\$141,879.38</b>		<b>\$234,508.35</b>
<b>400 Purchased Property Services</b>				
430 Repairs and Maintenance Services	951.13	2,875.19		3,826.32
440 Rentals	32,739.60	47,654.60		80,394.20
<b>Total Purchased Property Services</b>	<b>\$33,690.73</b>	<b>\$50,529.79</b>		<b>\$84,220.52</b>
<b>500 Other Purchased Services</b>				
510 Student Transportation Services	3,414.77	9,604.55		13,019.32
530 Communications		11.45		11.45
561 Tuition To Other School Districts Within the State		27,482.62		27,482.62
562 Tuition To Pennsylvania Charter Schools	384,676.71	470,600.01		855,276.72
568 Tuition To Private Residential Rehabilitative Institutions (PRRI) [In-State] and Detention Centers	5,320.00	4,745.00		10,065.00
569 Tuition – Other	1,064.00			1,064.00
580 Travel	386.40	6,785.86		7,172.26
<b>Total Other Purchased Services</b>	<b>\$394,861.88</b>	<b>\$519,229.49</b>		<b>\$914,091.37</b>
<b>600 Supplies</b>				
610 General Supplies	44,233.42	80,485.92		124,719.34
640 Books and Periodicals	1,231.16	4,321.53		5,552.69
650 Supplies & Fees – Technology Related	6,854.38	1,700.66		8,555.04
<b>Total Supplies</b>	<b>\$52,318.96</b>	<b>\$86,508.11</b>		<b>\$138,827.07</b>
<b>700 Property</b>				
752 Capital Equipment – Original and Additional		19,574.47		19,574.47
<b>Total Property</b>		<b>\$19,574.47</b>		<b>\$19,574.47</b>
<b>800 Other Objects</b>				
810 Dues and Fees	272.00	1,473.00		1,745.00

LEA : 111312503    Huntingdon Area SD

Printed 11/19/2018 8:45:08 AM

**General Fund (10)**

**1110 Regular Programs**

	<u>Elementary</u>	<u>Secondary</u>	<u>Federal</u>	<u>Total</u>
<b>Total Other Objects</b>	<b>\$272.00</b>	<b>\$1,473.00</b>		<b>\$1,745.00</b>
<b>Total 1110 Regular Programs</b>	<b>\$4,224,839.83</b>	<b>\$5,271,464.34</b>		<b>\$9,496,304.17</b>

**General Fund (10)**

**1190 Federally-Funded Regular Programs**

Elementary

Secondary

Federal

Total

**100 Personnel Services – Salaries**

100 Personnel Services – Salaries

406,424.62

406,424.62

**Total Personnel Services – Salaries**

**\$406,424.62**

**\$406,424.62**

**200 Personnel Services – Employee Benefits**

210 Group Insurance – Contracted Provider

61,835.14

61,835.14

220 Social Security Contributions

29,981.07

29,981.07

230 PSERS Retirement Contributions

66,186.15

66,186.15

250 Unemployment Compensation

750.10

750.10

260 Workers' Compensation

4,876.95

4,876.95

292 Health Savings Accounts

5,460.00

5,460.00

**Total Personnel Services – Employee Benefits**

**\$169,089.41**

**\$169,089.41**

**300 Purchased Professional and Technical Services**

329 Professional Educational Services – Other

12,336.47

12,336.47

330 Other Professional Services

2,605.55

2,605.55

**Total Purchased Professional and Technical Services**

**\$14,942.02**

**\$14,942.02**

**600 Supplies**

610 General Supplies

15,132.46

15,132.46

650 Supplies & Fees – Technology Related

127,977.95

127,977.95

**Total Supplies**

**\$143,110.41**

**\$143,110.41**

**Total 1190 Federally-Funded Regular Programs**

**\$733,566.46**

**\$733,566.46**

**General Fund (10)**

**1200 Special Programs – Elementary / Secondary**

	<u>Elementary</u>	<u>Secondary</u>	<u>Federal</u>	<u>Total</u>
<b>100 Personnel Services – Salaries</b>				
100 Personnel Services – Salaries	970,786.81	873,459.21	135,454.30	1,979,700.32
<b>Total Personnel Services – Salaries</b>	<b>\$970,786.81</b>	<b>\$873,459.21</b>	<b>\$135,454.30</b>	<b>\$1,979,700.32</b>
<b>200 Personnel Services – Employee Benefits</b>				
210 Group Insurance – Contracted Provider	296,210.82	158,716.79	60,292.65	515,220.26
220 Social Security Contributions	70,644.79	64,473.04	9,731.48	144,849.31
230 PSERS Retirement Contributions	322,967.22	298,422.19	22,059.10	643,448.51
250 Unemployment Compensation	3,069.53	2,221.03	499.89	5,790.45
260 Workers' Compensation	10,846.26	9,598.47	1,625.42	22,070.15
292 Health Savings Accounts	33,277.29	15,983.21	6,240.00	55,500.50
<b>Total Personnel Services – Employee Benefits</b>	<b>\$737,015.91</b>	<b>\$549,414.73</b>	<b>\$100,448.54</b>	<b>\$1,386,879.18</b>
<b>300 Purchased Professional and Technical Services</b>				
322 Professional Educational Services – Ius	18,509.92	30,190.89	4,774.00	53,474.81
323 Professional Educational Services – Other Educational Agencies	21,795.00	79,445.00		101,240.00
324 Professional Educational Services – Employee Training and Development Services	51.00	51.00		102.00
329 Professional Educational Services – Other	39,087.83	55,594.26		94,682.09
390 Other Purchased Professional and Technical Services	1,440.00			1,440.00
<b>Total Purchased Professional and Technical Services</b>	<b>\$80,883.75</b>	<b>\$165,281.15</b>	<b>\$4,774.00</b>	<b>\$250,938.90</b>
<b>500 Other Purchased Services</b>				
510 Student Transportation Services	16,564.12	3,219.79		19,783.91
561 Tuition To Other School Districts Within the State		11,988.99		11,988.99
562 Tuition To Pennsylvania Charter Schools	249,916.97	572,603.52	150,653.00	973,173.49
567 Tuition To Approved Private Schools (APS) and PA Chartered Schools for the Deaf and Blind	72,104.55	158,121.79		230,226.34
568 Tuition To Private Residential Rehabilitative Institutions (PRRI) [In-State] and Detention Centers	650.00	17,773.46		18,423.46
580 Travel	1,600.21	2,005.69		3,605.90
<b>Total Other Purchased Services</b>	<b>\$340,835.85</b>	<b>\$765,713.24</b>	<b>\$150,653.00</b>	<b>\$1,257,202.09</b>
<b>600 Supplies</b>				
610 General Supplies	9,524.90	7,080.55		16,605.45
640 Books and Periodicals	29,035.18	8,391.72		37,426.90
<b>Total Supplies</b>	<b>\$38,560.08</b>	<b>\$15,472.27</b>		<b>\$54,032.35</b>
<b>700 Property</b>				
752 Capital Equipment – Original and Additional	250.00			250.00
<b>Total Property</b>	<b>\$250.00</b>			<b>\$250.00</b>
<b>800 Other Objects</b>				
810 Dues and Fees		427.50		427.50
<b>Total Other Objects</b>		<b>\$427.50</b>		<b>\$427.50</b>
<b>Total 1200 Special Programs – Elementary / Secondary</b>	<b>\$2,168,332.40</b>	<b>\$2,369,768.10</b>	<b>\$391,329.84</b>	<b>\$4,929,430.34</b>

**General Fund (10)**

**1210 Life Skills Support**

	<u>Elementary</u>	<u>Secondary</u>	<u>Federal</u>	<u>Total</u>
<b>100 Personnel Services – Salaries</b>				
100 Personnel Services – Salaries	221,953.83	157,759.39	27,056.54	406,769.76
<b>Total Personnel Services – Salaries</b>	<b>\$221,953.83</b>	<b>\$157,759.39</b>	<b>\$27,056.54</b>	<b>\$406,769.76</b>
<b>200 Personnel Services – Employee Benefits</b>				
210 Group Insurance – Contracted Provider	89,838.49	36,311.47	5,812.84	131,962.80
220 Social Security Contributions	16,048.58	11,566.30	2,010.67	29,625.55
230 PSERS Retirement Contributions	72,290.55	55,787.75	4,406.54	132,484.84
250 Unemployment Compensation	1,029.62	594.38	148.04	1,772.04
260 Workers' Compensation	2,663.45	1,893.26	324.63	4,881.34
292 Health Savings Accounts	10,120.52	3,642.60	780.00	14,543.12
<b>Total Personnel Services – Employee Benefits</b>	<b>\$191,991.21</b>	<b>\$109,795.76</b>	<b>\$13,482.72</b>	<b>\$315,269.69</b>
<b>300 Purchased Professional and Technical Services</b>				
329 Professional Educational Services – Other	1,775.37			1,775.37
390 Other Purchased Professional and Technical Services	1,440.00			1,440.00
<b>Total Purchased Professional and Technical Services</b>	<b>\$3,215.37</b>			<b>\$3,215.37</b>
<b>500 Other Purchased Services</b>				
510 Student Transportation Services	1,313.03	1,051.20		2,364.23
580 Travel	196.77			196.77
<b>Total Other Purchased Services</b>	<b>\$1,509.80</b>	<b>\$1,051.20</b>		<b>\$2,561.00</b>
<b>600 Supplies</b>				
610 General Supplies	1,635.47	3,823.37		5,458.84
640 Books and Periodicals	1,073.03	5,458.71		6,531.74
<b>Total Supplies</b>	<b>\$2,708.50</b>	<b>\$9,282.08</b>		<b>\$11,990.58</b>
<b>Total 1210 Life Skills Support</b>	<b>\$421,378.71</b>	<b>\$277,888.43</b>	<b>\$40,539.26</b>	<b>\$739,806.40</b>

**General Fund (10)**

**1220 Sensory Support**

	<u>Elementary</u>	<u>Secondary</u>	<u>Federal</u>	<u>Total</u>
<b>100 Personnel Services – Salaries</b>				
100 Personnel Services – Salaries	55,867.13	55,866.87		111,734.00
<b>Total Personnel Services – Salaries</b>	<b>\$55,867.13</b>	<b>\$55,866.87</b>		<b>\$111,734.00</b>
<b>200 Personnel Services – Employee Benefits</b>				
210 Group Insurance – Contracted Provider	18,529.34	18,449.86		36,979.20
220 Social Security Contributions	4,010.73	4,010.26		8,020.99
230 PSERS Retirement Contributions	18,196.06	18,195.80		36,391.86
250 Unemployment Compensation	100.02	99.96		199.98
260 Workers' Compensation	670.54	670.30		1,340.84
292 Health Savings Accounts	1,498.98	1,498.97		2,997.95
<b>Total Personnel Services – Employee Benefits</b>	<b>\$43,005.67</b>	<b>\$42,925.15</b>		<b>\$85,930.82</b>
<b>500 Other Purchased Services</b>				
567 Tuition To Approved Private Schools (APS) and PA Chartered Schools for the Deaf and Blind	6,300.00	12,608.00		18,908.00
<b>Total Other Purchased Services</b>	<b>\$6,300.00</b>	<b>\$12,608.00</b>		<b>\$18,908.00</b>
<b>600 Supplies</b>				
610 General Supplies	2,103.17			2,103.17
640 Books and Periodicals	198.00			198.00
<b>Total Supplies</b>	<b>\$2,301.17</b>			<b>\$2,301.17</b>
<b>700 Property</b>				
752 Capital Equipment – Original and Additional	250.00			250.00
<b>Total Property</b>	<b>\$250.00</b>			<b>\$250.00</b>
<b>Total 1220 Sensory Support</b>	<b>\$107,723.97</b>	<b>\$111,400.02</b>		<b>\$219,123.99</b>

**General Fund (10)**

**1230 Emotional Support**

	<u>Elementary</u>	<u>Secondary</u>	<u>Federal</u>	<u>Total</u>
<b>100 Personnel Services – Salaries</b>				
100 Personnel Services – Salaries	216,193.46	84,127.56	105.42	300,426.44
<b>Total Personnel Services – Salaries</b>	<b>\$216,193.46</b>	<b>\$84,127.56</b>	<b>\$105.42</b>	<b>\$300,426.44</b>
<b>200 Personnel Services – Employee Benefits</b>				
210 Group Insurance – Contracted Provider	87,259.16	10,225.38		97,484.54
220 Social Security Contributions	15,578.41	6,332.42	7.83	21,918.66
230 PSERS Retirement Contributions	70,648.86	27,417.52	17.17	98,083.55
250 Unemployment Compensation	758.83	295.48	1.05	1,055.36
260 Workers' Compensation	2,594.29	1,009.58	1.27	3,605.14
292 Health Savings Accounts	11,050.00	3,120.00		14,170.00
<b>Total Personnel Services – Employee Benefits</b>	<b>\$187,889.55</b>	<b>\$48,400.38</b>	<b>\$27.32</b>	<b>\$236,317.25</b>
<b>300 Purchased Professional and Technical Services</b>				
322 Professional Educational Services – Ius		4,697.94		4,697.94
323 Professional Educational Services – Other Educational Agencies	21,795.00	79,445.00		101,240.00
329 Professional Educational Services – Other	26,202.08	46,201.98		72,404.06
<b>Total Purchased Professional and Technical Services</b>	<b>\$47,997.08</b>	<b>\$130,344.92</b>		<b>\$178,342.00</b>
<b>600 Supplies</b>				
610 General Supplies	2,129.96	503.96		2,633.92
640 Books and Periodicals	50.28	102.08		152.36
<b>Total Supplies</b>	<b>\$2,180.24</b>	<b>\$606.04</b>		<b>\$2,786.28</b>
<b>Total 1230 Emotional Support</b>	<b>\$454,260.33</b>	<b>\$263,478.90</b>	<b>\$132.74</b>	<b>\$717,871.97</b>



**General Fund (10)**

**1240 Academic Support**

	<u>Elementary</u>	<u>Secondary</u>	<u>Federal</u>	<u>Total</u>
<b>100 Personnel Services – Salaries</b>				
100 Personnel Services – Salaries	406,075.53	509,162.34	108,292.34	1,023,530.21
<b>Total Personnel Services – Salaries</b>	<b>\$406,075.53</b>	<b>\$509,162.34</b>	<b>\$108,292.34</b>	<b>\$1,023,530.21</b>
<b>200 Personnel Services – Employee Benefits</b>				
210 Group Insurance – Contracted Provider	91,387.59	84,533.84	54,479.81	230,401.24
220 Social Security Contributions	29,774.00	37,630.69	7,712.98	75,117.67
230 PSERS Retirement Contributions	139,236.74	175,803.21	17,635.39	332,675.34
250 Unemployment Compensation	1,124.66	1,151.53	350.80	2,626.99
260 Workers' Compensation	4,464.50	5,598.55	1,299.52	11,362.57
292 Health Savings Accounts	9,827.79	6,927.73	5,460.00	22,215.52
<b>Total Personnel Services – Employee Benefits</b>	<b>\$275,815.28</b>	<b>\$311,645.55</b>	<b>\$86,938.50</b>	<b>\$674,399.33</b>
<b>300 Purchased Professional and Technical Services</b>				
329 Professional Educational Services – Other	11,110.38	9,392.28		20,502.66
<b>Total Purchased Professional and Technical Services</b>	<b>\$11,110.38</b>	<b>\$9,392.28</b>		<b>\$20,502.66</b>
<b>500 Other Purchased Services</b>				
510 Student Transportation Services		2,168.59		2,168.59
580 Travel	329.21	1,820.79		2,150.00
<b>Total Other Purchased Services</b>	<b>\$329.21</b>	<b>\$3,989.38</b>		<b>\$4,318.59</b>
<b>600 Supplies</b>				
610 General Supplies	2,602.80	2,690.92		5,293.72
640 Books and Periodicals	27,713.87	2,830.93		30,544.80
<b>Total Supplies</b>	<b>\$30,316.67</b>	<b>\$5,521.85</b>		<b>\$35,838.52</b>
<b>800 Other Objects</b>				
810 Dues and Fees		427.50		427.50
<b>Total Other Objects</b>		<b>\$427.50</b>		<b>\$427.50</b>
<b>Total 1240 Academic Support</b>	<b>\$723,647.07</b>	<b>\$840,138.90</b>	<b>\$195,230.84</b>	<b>\$1,759,016.81</b>

**General Fund (10)**

	<u>Elementary</u>	<u>Secondary</u>	<u>Federal</u>	<u>Total</u>
<b>1241 Learning Support – Public</b>				
<b>100 Personnel Services – Salaries</b>				
100 Personnel Services – Salaries	360,965.50	417,424.87	108,292.34	886,682.71
<b>Total Personnel Services – Salaries</b>	<b>\$360,965.50</b>	<b>\$417,424.87</b>	<b>\$108,292.34</b>	<b>\$886,682.71</b>
<b>200 Personnel Services – Employee Benefits</b>				
210 Group Insurance – Contracted Provider	86,029.00	73,424.29	54,479.81	213,933.10
220 Social Security Contributions	26,375.86	30,764.37	7,712.98	64,853.21
230 PSERS Retirement Contributions	124,544.31	145,924.29	17,635.39	288,103.99
250 Unemployment Compensation	1,086.29	1,110.93	350.80	2,548.02
260 Workers' Compensation	4,331.76	5,010.18	1,299.52	10,641.46
292 Health Savings Accounts	9,360.00	5,977.97	5,460.00	20,797.97
<b>Total Personnel Services – Employee Benefits</b>	<b>\$251,727.22</b>	<b>\$262,212.03</b>	<b>\$86,938.50</b>	<b>\$600,877.75</b>
<b>300 Purchased Professional and Technical Services</b>				
329 Professional Educational Services – Other	8,819.58	7,674.18		16,493.76
<b>Total Purchased Professional and Technical Services</b>	<b>\$8,819.58</b>	<b>\$7,674.18</b>		<b>\$16,493.76</b>
<b>500 Other Purchased Services</b>				
580 Travel	234.23			234.23
<b>Total Other Purchased Services</b>	<b>\$234.23</b>			<b>\$234.23</b>
<b>600 Supplies</b>				
610 General Supplies	2,348.71	1,710.83		4,059.54
640 Books and Periodicals	27,605.45	2,501.55		30,107.00
<b>Total Supplies</b>	<b>\$29,954.16</b>	<b>\$4,212.38</b>		<b>\$34,166.54</b>
<b>Total 1241 Learning Support – Public</b>	<b>\$651,700.69</b>	<b>\$691,523.46</b>	<b>\$195,230.84</b>	<b>\$1,538,454.99</b>

**General Fund (10)**

**1243 Gifted Support**

	<u>Elementary</u>	<u>Secondary</u>	<u>Federal</u>	<u>Total</u>
<b>100 Personnel Services – Salaries</b>				
100 Personnel Services – Salaries	45,110.03	91,737.47		136,847.50
<b>Total Personnel Services – Salaries</b>	<b>\$45,110.03</b>	<b>\$91,737.47</b>		<b>\$136,847.50</b>
<b>200 Personnel Services – Employee Benefits</b>				
210 Group Insurance – Contracted Provider	5,358.59	11,109.55		16,468.14
220 Social Security Contributions	3,398.14	6,866.32		10,264.46
230 PSERS Retirement Contributions	14,692.43	29,878.92		44,571.35
250 Unemployment Compensation	38.37	40.60		78.97
260 Workers' Compensation	132.74	588.37		721.11
292 Health Savings Accounts	467.79	949.76		1,417.55
<b>Total Personnel Services – Employee Benefits</b>	<b>\$24,088.06</b>	<b>\$49,433.52</b>		<b>\$73,521.58</b>
<b>300 Purchased Professional and Technical Services</b>				
329 Professional Educational Services – Other	2,290.80	1,718.10		4,008.90
<b>Total Purchased Professional and Technical Services</b>	<b>\$2,290.80</b>	<b>\$1,718.10</b>		<b>\$4,008.90</b>
<b>500 Other Purchased Services</b>				
510 Student Transportation Services		2,168.59		2,168.59
580 Travel	94.98	1,820.79		1,915.77
<b>Total Other Purchased Services</b>	<b>\$94.98</b>	<b>\$3,989.38</b>		<b>\$4,084.36</b>
<b>600 Supplies</b>				
610 General Supplies	254.09	980.09		1,234.18
640 Books and Periodicals	108.42	329.38		437.80
<b>Total Supplies</b>	<b>\$362.51</b>	<b>\$1,309.47</b>		<b>\$1,671.98</b>
<b>800 Other Objects</b>				
810 Dues and Fees		427.50		427.50
<b>Total Other Objects</b>		<b>\$427.50</b>		<b>\$427.50</b>
<b>Total 1243 Gifted Support</b>	<b>\$71,946.38</b>	<b>\$148,615.44</b>		<b>\$220,561.82</b>

**General Fund (10)**

**1260 Physical Support**

	<u>Elementary</u>	<u>Secondary</u>	<u>Federal</u>	<u>Total</u>
<b>100 Personnel Services – Salaries</b>				
100 Personnel Services – Salaries	30,895.00	38,532.50		69,427.50
<b>Total Personnel Services – Salaries</b>	<b>\$30,895.00</b>	<b>\$38,532.50</b>		<b>\$69,427.50</b>
<b>200 Personnel Services – Employee Benefits</b>				
210 Group Insurance – Contracted Provider	9,196.24	9,196.24		18,392.48
220 Social Security Contributions	2,232.84	2,816.99		5,049.83
230 PSERS Retirement Contributions	10,062.52	12,550.05		22,612.57
250 Unemployment Compensation	14.50	36.63		51.13
260 Workers' Compensation	198.16	247.14		445.30
292 Health Savings Accounts	780.00	780.00		1,560.00
<b>Total Personnel Services – Employee Benefits</b>	<b>\$22,484.26</b>	<b>\$25,627.05</b>		<b>\$48,111.31</b>
<b>500 Other Purchased Services</b>				
580 Travel	91.92			91.92
<b>Total Other Purchased Services</b>	<b>\$91.92</b>			<b>\$91.92</b>
<b>600 Supplies</b>				
610 General Supplies	1,053.50	62.30		1,115.80
<b>Total Supplies</b>	<b>\$1,053.50</b>	<b>\$62.30</b>		<b>\$1,115.80</b>
<b>Total 1260 Physical Support</b>	<b>\$54,524.68</b>	<b>\$64,221.85</b>		<b>\$118,746.53</b>

**General Fund (10)**

**1290 Special Programs - Other Support**

	<u>Elementary</u>	<u>Secondary</u>	<u>Federal</u>	<u>Total</u>
<b>100 Personnel Services – Salaries</b>				
100 Personnel Services – Salaries	39,801.86	28,010.55		67,812.41
<b>Total Personnel Services – Salaries</b>	<b>\$39,801.86</b>	<b>\$28,010.55</b>		<b>\$67,812.41</b>
<b>200 Personnel Services – Employee Benefits</b>				
220 Social Security Contributions	3,000.23	2,116.38		5,116.61
230 PSERS Retirement Contributions	12,532.49	8,667.86		21,200.35
250 Unemployment Compensation	41.90	43.05		84.95
260 Workers' Compensation	255.32	179.64		434.96
292 Health Savings Accounts		13.91		13.91
<b>Total Personnel Services – Employee Benefits</b>	<b>\$15,829.94</b>	<b>\$11,020.84</b>		<b>\$26,850.78</b>
<b>300 Purchased Professional and Technical Services</b>				
322 Professional Educational Services – lus	18,509.92	25,492.95	4,774.00	48,776.87
324 Professional Educational Services – Employee Training and Development Services	51.00	51.00		102.00
<b>Total Purchased Professional and Technical Services</b>	<b>\$18,560.92</b>	<b>\$25,543.95</b>	<b>\$4,774.00</b>	<b>\$48,878.87</b>
<b>500 Other Purchased Services</b>				
510 Student Transportation Services	15,251.09			15,251.09
561 Tuition To Other School Districts Within the State		11,988.99		11,988.99
562 Tuition To Pennsylvania Charter Schools	249,916.97	572,603.52	150,653.00	973,173.49
567 Tuition To Approved Private Schools (APS) and PA Chartered Schools for the Deaf and Blind	65,804.55	145,513.79		211,318.34
568 Tuition To Private Residential Rehabilitative Institutions (PRRI) [In-State] and Detention Centers	650.00	17,773.46		18,423.46
580 Travel	982.31	184.90		1,167.21
<b>Total Other Purchased Services</b>	<b>\$332,604.92</b>	<b>\$748,064.66</b>	<b>\$150,653.00</b>	<b>\$1,231,322.58</b>
<b>Total 1290 Special Programs - Other Support</b>	<b>\$406,797.64</b>	<b>\$812,640.00</b>	<b>\$155,427.00</b>	<b>\$1,374,864.64</b>

**General Fund (10)**

**1300 Vocational Education**

	<u>Elementary</u>	<u>Secondary</u>	<u>Federal</u>	<u>Total</u>
<b>100 Personnel Services – Salaries</b>				
100 Personnel Services – Salaries		184,563.91		184,563.91
<b>Total Personnel Services – Salaries</b>		<b>\$184,563.91</b>		<b>\$184,563.91</b>
<b>200 Personnel Services – Employee Benefits</b>				
210 Group Insurance – Contracted Provider		35,256.49		35,256.49
220 Social Security Contributions		13,438.18		13,438.18
230 PSERS Retirement Contributions		60,114.86		60,114.86
250 Unemployment Compensation		106.15		106.15
260 Workers' Compensation		1,183.75		1,183.75
292 Health Savings Accounts		3,744.00		3,744.00
<b>Total Personnel Services – Employee Benefits</b>		<b>\$113,843.43</b>		<b>\$113,843.43</b>
<b>300 Purchased Professional and Technical Services</b>				
329 Professional Educational Services – Other		9,392.28		9,392.28
<b>Total Purchased Professional and Technical Services</b>		<b>\$9,392.28</b>		<b>\$9,392.28</b>
<b>400 Purchased Property Services</b>				
430 Repairs and Maintenance Services		150.00		150.00
<b>Total Purchased Property Services</b>		<b>\$150.00</b>		<b>\$150.00</b>
<b>500 Other Purchased Services</b>				
510 Student Transportation Services		755.76		755.76
564 Tuition To Career and Technology Centers		625,497.00		625,497.00
580 Travel		1,075.45		1,075.45
<b>Total Other Purchased Services</b>		<b>\$627,328.21</b>		<b>\$627,328.21</b>
<b>600 Supplies</b>				
610 General Supplies		9,567.78		9,567.78
640 Books and Periodicals		492.70		492.70
<b>Total Supplies</b>		<b>\$10,060.48</b>		<b>\$10,060.48</b>
<b>700 Property</b>				
752 Capital Equipment – Original and Additional		4,840.64		4,840.64
<b>Total Property</b>		<b>\$4,840.64</b>		<b>\$4,840.64</b>
<b>Total 1300 Vocational Education</b>		<b>\$950,178.95</b>		<b>\$950,178.95</b>

**General Fund (10)**

**1400 Other Instructional Programs – Elementary / Secondary**

	<u>Elementary</u>	<u>Secondary</u>	<u>Federal</u>	<u>Total</u>
<b>100 Personnel Services – Salaries</b>				
100 Personnel Services – Salaries	8,116.03	57,955.17		66,071.20
<b>Total Personnel Services – Salaries</b>	<b>\$8,116.03</b>	<b>\$57,955.17</b>		<b>\$66,071.20</b>
<b>200 Personnel Services – Employee Benefits</b>				
210 Group Insurance – Contracted Provider	7,692.06	7,692.06		15,384.12
220 Social Security Contributions	515.31	4,254.68		4,769.99
230 PSERS Retirement Contributions	2,643.45	18,875.91		21,519.36
250 Unemployment Compensation	13.97	36.77		50.74
260 Workers' Compensation	57.90	379.72		437.62
292 Health Savings Accounts		1,691.46		1,691.46
<b>Total Personnel Services – Employee Benefits</b>	<b>\$10,922.69</b>	<b>\$32,930.60</b>		<b>\$43,853.29</b>
<b>300 Purchased Professional and Technical Services</b>				
322 Professional Educational Services – Ius		17,046.72		17,046.72
323 Professional Educational Services – Other Educational Agencies		80,600.00		80,600.00
329 Professional Educational Services – Other		847.64		847.64
<b>Total Purchased Professional and Technical Services</b>		<b>\$98,494.36</b>		<b>\$98,494.36</b>
<b>400 Purchased Property Services</b>				
430 Repairs and Maintenance Services		149.96		149.96
<b>Total Purchased Property Services</b>		<b>\$149.96</b>		<b>\$149.96</b>
<b>500 Other Purchased Services</b>				
561 Tuition To Other School Districts Within the State		563.60		563.60
580 Travel	222.36	905.89		1,128.25
<b>Total Other Purchased Services</b>	<b>\$222.36</b>	<b>\$1,469.49</b>		<b>\$1,691.85</b>
<b>600 Supplies</b>				
620 Energy		395.46		395.46
640 Books and Periodicals		225.00		225.00
<b>Total Supplies</b>		<b>\$620.46</b>		<b>\$620.46</b>
<b>800 Other Objects</b>				
810 Dues and Fees		400.00		400.00
<b>Total Other Objects</b>		<b>\$400.00</b>		<b>\$400.00</b>
<b>Total 1400 Other Instructional Programs – Elementary / Secondary</b>	<b>\$19,261.08</b>	<b>\$192,020.04</b>		<b>\$211,281.12</b>

**General Fund (10)**

**1410 Drivers' Education**

	<u>Elementary</u>	<u>Secondary</u>	<u>Federal</u>	<u>Total</u>
<b>100 Personnel Services – Salaries</b>				
100 Personnel Services – Salaries		2,337.50		2,337.50
<b>Total Personnel Services – Salaries</b>		<b>\$2,337.50</b>		<b>\$2,337.50</b>
<b>200 Personnel Services – Employee Benefits</b>				
220 Social Security Contributions		178.83		178.83
230 PSERS Retirement Contributions		761.33		761.33
250 Unemployment Compensation		6.78		6.78
260 Workers' Compensation		14.99		14.99
<b>Total Personnel Services – Employee Benefits</b>		<b>\$961.93</b>		<b>\$961.93</b>
<b>400 Purchased Property Services</b>				
430 Repairs and Maintenance Services		149.96		149.96
<b>Total Purchased Property Services</b>		<b>\$149.96</b>		<b>\$149.96</b>
<b>600 Supplies</b>				
620 Energy		395.46		395.46
<b>Total Supplies</b>		<b>\$395.46</b>		<b>\$395.46</b>
<b>Total 1410 Drivers' Education</b>		<b>\$3,844.85</b>		<b>\$3,844.85</b>



**General Fund (10)**

**1430 Homebound Instruction**

	<u>Elementary</u>	<u>Secondary</u>	<u>Federal</u>	<u>Total</u>
<b>100 Personnel Services – Salaries</b>				
100 Personnel Services – Salaries	1,037.50	11,381.25		12,418.75
<b>Total Personnel Services – Salaries</b>	<b>\$1,037.50</b>	<b>\$11,381.25</b>		<b>\$12,418.75</b>
<b>200 Personnel Services – Employee Benefits</b>				
220 Social Security Contributions	75.45	849.59		925.04
230 PSERS Retirement Contributions	337.91	3,706.89		4,044.80
250 Unemployment Compensation		5.90		5.90
260 Workers' Compensation	12.45	72.99		85.44
<b>Total Personnel Services – Employee Benefits</b>	<b>\$425.81</b>	<b>\$4,635.37</b>		<b>\$5,061.18</b>
<b>300 Purchased Professional and Technical Services</b>				
329 Professional Educational Services – Other		780.04		780.04
<b>Total Purchased Professional and Technical Services</b>		<b>\$780.04</b>		<b>\$780.04</b>
<b>500 Other Purchased Services</b>				
580 Travel	222.36	905.89		1,128.25
<b>Total Other Purchased Services</b>	<b>\$222.36</b>	<b>\$905.89</b>		<b>\$1,128.25</b>
<b>Total 1430 Homebound Instruction</b>	<b>\$1,685.67</b>	<b>\$17,702.55</b>		<b>\$19,388.22</b>

**General Fund (10)**

**1440 Alternative Regular Education Programs**

	<u>Elementary</u>	<u>Secondary</u>	<u>Federal</u>	<u>Total</u>
<b>100 Personnel Services – Salaries</b>				
100 Personnel Services – Salaries	7,078.53	8,417.67		15,496.20
<b>Total Personnel Services – Salaries</b>	<b>\$7,078.53</b>	<b>\$8,417.67</b>		<b>\$15,496.20</b>
<b>200 Personnel Services – Employee Benefits</b>				
210 Group Insurance – Contracted Provider	7,692.06	7,692.06		15,384.12
220 Social Security Contributions	439.86	541.22		981.08
230 PSERS Retirement Contributions	2,305.54	2,741.53		5,047.07
250 Unemployment Compensation	13.97	13.65		27.62
260 Workers' Compensation	45.45	62.01		107.46
<b>Total Personnel Services – Employee Benefits</b>	<b>\$10,496.88</b>	<b>\$11,050.47</b>		<b>\$21,547.35</b>
<b>300 Purchased Professional and Technical Services</b>				
322 Professional Educational Services – lus		17,046.72		17,046.72
323 Professional Educational Services – Other Educational Agencies		80,600.00		80,600.00
<b>Total Purchased Professional and Technical Services</b>		<b>\$97,646.72</b>		<b>\$97,646.72</b>
<b>500 Other Purchased Services</b>				
561 Tuition To Other School Districts Within the State		563.60		563.60
<b>Total Other Purchased Services</b>		<b>\$563.60</b>		<b>\$563.60</b>
<b>600 Supplies</b>				
640 Books and Periodicals		225.00		225.00
<b>Total Supplies</b>		<b>\$225.00</b>		<b>\$225.00</b>
<b>800 Other Objects</b>				
810 Dues and Fees		400.00		400.00
<b>Total Other Objects</b>		<b>\$400.00</b>		<b>\$400.00</b>
<b>Total 1440 Alternative Regular Education Programs</b>	<b>\$17,575.41</b>	<b>\$118,303.46</b>		<b>\$135,878.87</b>

**General Fund (10)**

**1441 Adjudicated / Court-Placed Programs**

	<u>Elementary</u>	<u>Secondary</u>	<u>Federal</u>	<u>Total</u>
<b>100 Personnel Services – Salaries</b>				
100 Personnel Services – Salaries		1,450.00		1,450.00
<b>Total Personnel Services – Salaries</b>		<b>\$1,450.00</b>		<b>\$1,450.00</b>
<b>200 Personnel Services – Employee Benefits</b>				
220 Social Security Contributions		108.98		108.98
230 PSERS Retirement Contributions		472.27		472.27
260 Workers' Compensation		17.40		17.40
<b>Total Personnel Services – Employee Benefits</b>		<b>\$598.65</b>		<b>\$598.65</b>
<b>500 Other Purchased Services</b>				
561 Tuition To Other School Districts Within the State		563.60		563.60
<b>Total Other Purchased Services</b>		<b>\$563.60</b>		<b>\$563.60</b>
<b>Total 1441 Adjudicated / Court-Placed Programs</b>		<b>\$2,612.25</b>		<b>\$2,612.25</b>

**General Fund (10)**

	<u>Elementary</u>	<u>Secondary</u>	<u>Federal</u>	<u>Total</u>
<b>1442 Alternative Education Programs</b>				
<b>100 Personnel Services – Salaries</b>				
100 Personnel Services – Salaries	7,078.53	6,967.67		14,046.20
<b>Total Personnel Services – Salaries</b>	<b>\$7,078.53</b>	<b>\$6,967.67</b>		<b>\$14,046.20</b>
<b>200 Personnel Services – Employee Benefits</b>				
210 Group Insurance – Contracted Provider	7,692.06	7,692.06		15,384.12
220 Social Security Contributions	439.86	432.24		872.10
230 PSERS Retirement Contributions	2,305.54	2,269.26		4,574.80
250 Unemployment Compensation	13.97	13.65		27.62
260 Workers' Compensation	45.45	44.61		90.06
<b>Total Personnel Services – Employee Benefits</b>	<b>\$10,496.88</b>	<b>\$10,451.82</b>		<b>\$20,948.70</b>
<b>300 Purchased Professional and Technical Services</b>				
322 Professional Educational Services – Ius		17,046.72		17,046.72
323 Professional Educational Services – Other Educational Agencies		80,600.00		80,600.00
<b>Total Purchased Professional and Technical Services</b>		<b>\$97,646.72</b>		<b>\$97,646.72</b>
<b>600 Supplies</b>				
640 Books and Periodicals		225.00		225.00
<b>Total Supplies</b>		<b>\$225.00</b>		<b>\$225.00</b>
<b>800 Other Objects</b>				
810 Dues and Fees		400.00		400.00
<b>Total Other Objects</b>		<b>\$400.00</b>		<b>\$400.00</b>
<b>Total 1442 Alternative Education Programs</b>	<b>\$17,575.41</b>	<b>\$115,691.21</b>		<b>\$133,266.62</b>

LEA : 111312503    Huntingdon Area SD

Printed 11/19/2018 8:45:08 AM

Page - 24 of 25

**General Fund (10)****1450 Instructional Programs Outside the Established School Day**

	<u>Elementary</u>	<u>Secondary</u>	<u>Federal</u>	<u>Total</u>
<b>100 Personnel Services – Salaries</b>				
100 Personnel Services – Salaries		2,975.00		2,975.00
<b>Total Personnel Services – Salaries</b>		<b>\$2,975.00</b>		<b>\$2,975.00</b>
<b>200 Personnel Services – Employee Benefits</b>				
220 Social Security Contributions		225.57		225.57
230 PSERS Retirement Contributions		968.95		968.95
250 Unemployment Compensation		1.81		1.81
260 Workers' Compensation		19.08		19.08
<b>Total Personnel Services – Employee Benefits</b>		<b>\$1,215.41</b>		<b>\$1,215.41</b>
<b>Total 1450 Instructional Programs Outside the Established School Day</b>		<b>\$4,190.41</b>		<b>\$4,190.41</b>

**General Fund (10)**

**1490 Additional Other Instructional Programs**

	<u>Elementary</u>	<u>Secondary</u>	<u>Federal</u>	<u>Total</u>
<b>100 Personnel Services – Salaries</b>				
100 Personnel Services – Salaries		32,843.75		32,843.75
<b>Total Personnel Services – Salaries</b>		<b>\$32,843.75</b>		<b>\$32,843.75</b>
<b>200 Personnel Services – Employee Benefits</b>				
220 Social Security Contributions		2,459.47		2,459.47
230 PSERS Retirement Contributions		10,697.21		10,697.21
250 Unemployment Compensation		8.63		8.63
260 Workers' Compensation		210.65		210.65
292 Health Savings Accounts		1,691.46		1,691.46
<b>Total Personnel Services – Employee Benefits</b>		<b>\$15,067.42</b>		<b>\$15,067.42</b>
<b>300 Purchased Professional and Technical Services</b>				
329 Professional Educational Services – Other		67.60		67.60
<b>Total Purchased Professional and Technical Services</b>		<b>\$67.60</b>		<b>\$67.60</b>
<b>Total 1490 Additional Other Instructional Programs</b>		<b>\$47,978.77</b>		<b>\$47,978.77</b>

**General Fund (10)**

**2000 Support Services**

**Total**

**100 Personnel Services – Salaries**

100 Personnel Services – Salaries 3,267,926.51

**Total Personnel Services – Salaries \$3,267,926.51**

**200 Personnel Services – Employee Benefits**

210 Group Insurance – Contracted Provider 568,873.95

220 Social Security Contributions 241,850.08

230 PSERS Retirement Contributions 1,006,858.53

240 Tuition Reimbursement 106,275.00

250 Unemployment Compensation 2,472.28

260 Workers' Compensation 20,869.51

292 Health Savings Accounts 107,914.46

**Total Personnel Services – Employee Benefits \$2,055,113.81**

**300 Purchased Professional and Technical Services**

322 Professional Educational Services – Ius 8,053.75

324 Professional Educational Services – Employee Training and Development Services 15,583.00

329 Professional Educational Services – Other 34,962.98

330 Other Professional Services 219,364.31

340 Technical Services 11,748.26

350 Security / Safety Services 57,450.00

**Total Purchased Professional and Technical Services \$347,162.30**

**400 Purchased Property Services**

410 Cleaning Services 20,866.56

420 Utility Services 74,171.05

430 Repairs and Maintenance Services 98,234.28

440 Rentals 182,357.42

460 Extermination Services 4,574.00

**Total Purchased Property Services \$380,203.31**

**500 Other Purchased Services**

510 Student Transportation Services 3,234.19

511 Student Transportation Services from Another LEA Within the State 4,011.92

513 Contracted Carriers 1,989,971.75

516 Student Transportation Services From the IU 24,759.01

520 Insurance – General 19,114.00

522 Automotive Liability Insurance 3,974.00

523 General Property and Liability Insurance 77,139.00

530 Communications 35,838.63

549 Other Advertising/Public Relations 18,708.56

580 Travel 35,029.84

**Total Other Purchased Services \$2,211,780.90**

**600 Supplies**

610 General Supplies 222,117.53

620 Energy 494,124.60

630 Food 5,214.42

640 Books and Periodicals 19,887.13

LEA : 111312503    Huntingdon Area SD

Printed 11/19/2018 8:45:11 AM

**General Fund (10)**

**2000 Support Services**

**Total**

**600 Supplies**

650 Supplies & Fees – Technology Related

305,551.18

**Total Supplies**

**\$1,046,894.86**

**700 Property**

756 Capitalized Technology Hardware and Equipment – Original

41,200.51

762 Capitalized Equipment - Replacement

14,673.53

**Total Property**

**\$55,874.04**

**800 Other Objects**

810 Dues and Fees

14,391.09

890 Miscellaneous Expenditures

165.00

**Total Other Objects**

**\$14,556.09**

**Total 2000 Support Services**

**\$9,379,511.82**



**General Fund (10)**

	<u>Elementary</u>	<u>Secondary</u>	<u>Federal</u>	<u>Total</u>
<b>2100 Support Services – Students</b>				
<b>100 Personnel Services – Salaries</b>				
100 Personnel Services – Salaries	279,474.34	319,048.34		598,522.68
<b>Total Personnel Services – Salaries</b>	<b>\$279,474.34</b>	<b>\$319,048.34</b>		<b>\$598,522.68</b>
<b>200 Personnel Services – Employee Benefits</b>				
210 Group Insurance – Contracted Provider	32,940.24	38,782.42		71,722.66
220 Social Security Contributions	20,138.81	23,161.70		43,300.51
230 PSERS Retirement Contributions	86,276.45	99,165.58		185,442.03
250 Unemployment Compensation	243.96	158.83		402.79
260 Workers' Compensation	1,733.76	1,987.55		3,721.31
292 Health Savings Accounts	6,531.63	5,748.37		12,280.00
<b>Total Personnel Services – Employee Benefits</b>	<b>\$147,864.85</b>	<b>\$169,004.45</b>		<b>\$316,869.30</b>
<b>300 Purchased Professional and Technical Services</b>				
329 Professional Educational Services – Other	3,449.07	17,734.53		21,183.60
330 Other Professional Services	5,885.00			5,885.00
<b>Total Purchased Professional and Technical Services</b>	<b>\$9,334.07</b>	<b>\$17,734.53</b>		<b>\$27,068.60</b>
<b>500 Other Purchased Services</b>				
510 Student Transportation Services	673.47	2,560.72		3,234.19
580 Travel	829.86	1,664.70		4,575.99
<b>Total Other Purchased Services</b>	<b>\$1,503.33</b>	<b>\$4,225.42</b>		<b>\$7,810.18</b>
<b>600 Supplies</b>				
610 General Supplies	2,439.47	4,026.16		6,465.63
640 Books and Periodicals	210.00	2,512.00		2,722.00
650 Supplies & Fees – Technology Related	7,551.28	8,001.72		15,553.00
<b>Total Supplies</b>	<b>\$10,200.75</b>	<b>\$14,539.88</b>		<b>\$24,740.63</b>
<b>800 Other Objects</b>				
810 Dues and Fees				175.00
<b>Total Other Objects</b>				<b>\$175.00</b>
<b>Total 2100 Support Services – Students</b>	<b>\$448,377.34</b>	<b>\$524,552.62</b>		<b>\$975,186.39</b>

**General Fund (10)**

	<u>Elementary</u>	<u>Secondary</u>	<u>Federal</u>	<u>Total</u>
<b>2110 Supervision of Student Services</b>				
<b>100 Personnel Services – Salaries</b>				
100 Personnel Services – Salaries	113,877.43	84,971.39		198,848.82
<b>Total Personnel Services – Salaries</b>	<b>\$113,877.43</b>	<b>\$84,971.39</b>		<b>\$198,848.82</b>
<b>200 Personnel Services – Employee Benefits</b>				
210 Group Insurance – Contracted Provider	14,093.65	7,904.73		21,998.38
220 Social Security Contributions	7,776.17	5,682.27		13,458.44
230 PSERS Retirement Contributions	32,341.59	22,926.80		55,268.39
250 Unemployment Compensation	72.09	43.10		115.19
260 Workers' Compensation	671.71	486.34		1,158.05
292 Health Savings Accounts	3,345.00	2,565.00		5,910.00
<b>Total Personnel Services – Employee Benefits</b>	<b>\$58,300.21</b>	<b>\$39,608.24</b>		<b>\$97,908.45</b>
<b>300 Purchased Professional and Technical Services</b>				
329 Professional Educational Services – Other	3,334.53	3,334.53		6,669.06
<b>Total Purchased Professional and Technical Services</b>	<b>\$3,334.53</b>	<b>\$3,334.53</b>		<b>\$6,669.06</b>
<b>500 Other Purchased Services</b>				
580 Travel	355.11	174.56		529.67
<b>Total Other Purchased Services</b>	<b>\$355.11</b>	<b>\$174.56</b>		<b>\$529.67</b>
<b>600 Supplies</b>				
610 General Supplies	37.69	89.86		127.55
650 Supplies & Fees – Technology Related	7,551.28	7,551.27		15,102.55
<b>Total Supplies</b>	<b>\$7,588.97</b>	<b>\$7,641.13</b>		<b>\$15,230.10</b>
<b>Total 2110 Supervision of Student Services</b>	<b>\$183,456.25</b>	<b>\$135,729.85</b>		<b>\$319,186.10</b>

**General Fund (10)**

**2111 Supervision of Student Services – Head of Component**

	<u>Elementary</u>	<u>Secondary</u>	<u>Federal</u>	<u>Total</u>
<b>100 Personnel Services – Salaries</b>				
100 Personnel Services – Salaries	113,877.43	84,971.39		198,848.82
<b>Total Personnel Services – Salaries</b>	<b>\$113,877.43</b>	<b>\$84,971.39</b>		<b>\$198,848.82</b>
<b>200 Personnel Services – Employee Benefits</b>				
210 Group Insurance – Contracted Provider	14,093.65	7,904.73		21,998.38
220 Social Security Contributions	7,776.17	5,682.27		13,458.44
230 PSERS Retirement Contributions	32,341.59	22,926.80		55,268.39
250 Unemployment Compensation	72.09	43.10		115.19
260 Workers' Compensation	671.71	486.34		1,158.05
292 Health Savings Accounts	3,345.00	2,565.00		5,910.00
<b>Total Personnel Services – Employee Benefits</b>	<b>\$58,300.21</b>	<b>\$39,608.24</b>		<b>\$97,908.45</b>
<b>300 Purchased Professional and Technical Services</b>				
329 Professional Educational Services – Other	3,334.53	3,334.53		6,669.06
<b>Total Purchased Professional and Technical Services</b>	<b>\$3,334.53</b>	<b>\$3,334.53</b>		<b>\$6,669.06</b>
<b>500 Other Purchased Services</b>				
580 Travel	355.11	174.56		529.67
<b>Total Other Purchased Services</b>	<b>\$355.11</b>	<b>\$174.56</b>		<b>\$529.67</b>
<b>600 Supplies</b>				
610 General Supplies	37.69	89.86		127.55
650 Supplies & Fees – Technology Related	7,551.28	7,551.27		15,102.55
<b>Total Supplies</b>	<b>\$7,588.97</b>	<b>\$7,641.13</b>		<b>\$15,230.10</b>
<b>Total 2111 Supervision of Student Services – Head of Component</b>	<b>\$183,456.25</b>	<b>\$135,729.85</b>		<b>\$319,186.10</b>

**General Fund (10)**

**2120 Guidance Services**

	<u>Elementary</u>	<u>Secondary</u>	<u>Federal</u>	<u>Total</u>
<b>100 Personnel Services – Salaries</b>				
100 Personnel Services – Salaries	106,444.98	174,610.08		281,055.06
<b>Total Personnel Services – Salaries</b>	<b>\$106,444.98</b>	<b>\$174,610.08</b>		<b>\$281,055.06</b>
<b>200 Personnel Services – Employee Benefits</b>				
210 Group Insurance – Contracted Provider	12,726.52	24,757.69		37,484.21
220 Social Security Contributions	7,930.09	13,024.85		20,954.94
230 PSERS Retirement Contributions	34,669.09	56,870.37		91,539.46
250 Unemployment Compensation	142.88	86.75		229.63
260 Workers' Compensation	682.63	1,119.88		1,802.51
292 Health Savings Accounts	2,470.00	2,340.00		4,810.00
<b>Total Personnel Services – Employee Benefits</b>	<b>\$58,621.21</b>	<b>\$98,199.54</b>		<b>\$156,820.75</b>
<b>300 Purchased Professional and Technical Services</b>				
329 Professional Educational Services – Other	114.54	14,400.00		14,514.54
330 Other Professional Services	5,885.00			5,885.00
<b>Total Purchased Professional and Technical Services</b>	<b>\$5,999.54</b>	<b>\$14,400.00</b>		<b>\$20,399.54</b>
<b>500 Other Purchased Services</b>				
510 Student Transportation Services	673.47	2,560.72		3,234.19
580 Travel	300.60	1,316.00		1,616.60
<b>Total Other Purchased Services</b>	<b>\$974.07</b>	<b>\$3,876.72</b>		<b>\$4,850.79</b>
<b>600 Supplies</b>				
610 General Supplies	498.38	2,032.90		2,531.28
640 Books and Periodicals	210.00	2,512.00		2,722.00
650 Supplies & Fees – Technology Related		450.45		450.45
<b>Total Supplies</b>	<b>\$708.38</b>	<b>\$4,995.35</b>		<b>\$5,703.73</b>
<b>Total 2120 Guidance Services</b>	<b>\$172,748.18</b>	<b>\$296,081.69</b>		<b>\$468,829.87</b>

**General Fund (10)**

**2140 Psychological Services**

	<u>Elementary</u>	<u>Secondary</u>	<u>Federal</u>	<u>Total</u>
<b>100 Personnel Services – Salaries</b>				
100 Personnel Services – Salaries	59,151.93	59,466.87		118,618.80
<b>Total Personnel Services – Salaries</b>	<b>\$59,151.93</b>	<b>\$59,466.87</b>		<b>\$118,618.80</b>
<b>200 Personnel Services – Employee Benefits</b>				
210 Group Insurance – Contracted Provider	6,120.07	6,120.00		12,240.07
220 Social Security Contributions	4,432.55	4,454.58		8,887.13
230 PSERS Retirement Contributions	19,265.77	19,368.41		38,634.18
250 Unemployment Compensation	28.99	28.98		57.97
260 Workers' Compensation	379.42	381.33		760.75
292 Health Savings Accounts	716.63	843.37		1,560.00
<b>Total Personnel Services – Employee Benefits</b>	<b>\$30,943.43</b>	<b>\$31,196.67</b>		<b>\$62,140.10</b>
<b>500 Other Purchased Services</b>				
580 Travel	174.15	174.14		348.29
<b>Total Other Purchased Services</b>	<b>\$174.15</b>	<b>\$174.14</b>		<b>\$348.29</b>
<b>600 Supplies</b>				
610 General Supplies	1,903.40	1,903.40		3,806.80
<b>Total Supplies</b>	<b>\$1,903.40</b>	<b>\$1,903.40</b>		<b>\$3,806.80</b>
<b>Total 2140 Psychological Services</b>	<b>\$92,172.91</b>	<b>\$92,741.08</b>		<b>\$184,913.99</b>

**General Fund (10)**

**2170 Student Accounting Services**

Elementary

Secondary

Federal

Total

**500 Other Purchased Services**

580 Travel

2,081.43

**Total Other Purchased Services**

**\$2,081.43**

**800 Other Objects**

810 Dues and Fees

175.00

**Total Other Objects**

**\$175.00**

**Total 2170 Student Accounting Services**

**\$2,256.43**

LEA : 111312503    Huntingdon Area SD

Printed 11/19/2018 8:45:11 AM

Page - 9 of 35

**General Fund (10)****2200 Support Services – Instructional Staff**

	<u>Elementary</u>	<u>Secondary</u>	<u>Federal</u>	<u>Total</u>
<b>100 Personnel Services – Salaries</b>				
100 Personnel Services – Salaries	312,637.06	240,665.11		553,302.17
<b>Total Personnel Services – Salaries</b>	<b>\$312,637.06</b>	<b>\$240,665.11</b>		<b>\$553,302.17</b>
<b>200 Personnel Services – Employee Benefits</b>				
210 Group Insurance – Contracted Provider	44,624.59	44,865.07		89,489.66
220 Social Security Contributions	23,603.15	17,993.21		41,596.36
230 PSERS Retirement Contributions	99,822.23	77,373.13		177,195.36
240 Tuition Reimbursement	57,648.00	48,627.00		106,275.00
250 Unemployment Compensation	173.84	131.38		305.22
260 Workers' Compensation	2,016.01	1,543.60		3,559.61
292 Health Savings Accounts	7,233.00	7,918.82		15,151.82
<b>Total Personnel Services – Employee Benefits</b>	<b>\$235,120.82</b>	<b>\$198,452.21</b>		<b>\$433,573.03</b>
<b>300 Purchased Professional and Technical Services</b>				
322 Professional Educational Services – lus	3,543.65	4,510.10		8,053.75
324 Professional Educational Services – Employee Training and Development Services	7,584.00	7,584.00		15,168.00
329 Professional Educational Services – Other	7,035.31	6,348.07		13,383.38
340 Technical Services	2,000.00	2,000.00		4,000.00
<b>Total Purchased Professional and Technical Services</b>	<b>\$20,162.96</b>	<b>\$20,442.17</b>		<b>\$40,605.13</b>
<b>400 Purchased Property Services</b>				
430 Repairs and Maintenance Services	28.05	1,918.18		1,946.23
440 Rentals	95,466.60	54,964.00		150,430.60
<b>Total Purchased Property Services</b>	<b>\$95,494.65</b>	<b>\$56,882.18</b>		<b>\$152,376.83</b>
<b>500 Other Purchased Services</b>				
530 Communications		90.47		90.47
580 Travel	2,175.49	6,567.11		8,742.60
<b>Total Other Purchased Services</b>	<b>\$2,175.49</b>	<b>\$6,657.58</b>		<b>\$8,833.07</b>
<b>600 Supplies</b>				
610 General Supplies	803.27	1,765.93		2,569.20
640 Books and Periodicals	6,121.80	10,915.88		17,037.68
650 Supplies & Fees – Technology Related	83,058.95	135,330.75		218,389.70
<b>Total Supplies</b>	<b>\$89,984.02</b>	<b>\$148,012.56</b>		<b>\$237,996.58</b>
<b>700 Property</b>				
756 Capitalized Technology Hardware and Equipment – Original	21,310.51	19,890.00		41,200.51
<b>Total Property</b>	<b>\$21,310.51</b>	<b>\$19,890.00</b>		<b>\$41,200.51</b>
<b>Total 2200 Support Services – Instructional Staff</b>	<b>\$776,885.51</b>	<b>\$691,001.81</b>		<b>\$1,467,887.32</b>

**General Fund (10)**

	<u>Elementary</u>	<u>Secondary</u>	<u>Federal</u>	<u>Total</u>
<b>2220 Technology Support Services</b>				
<b>100 Personnel Services – Salaries</b>				
100 Personnel Services – Salaries	63,590.99	61,116.35		124,707.34
<b>Total Personnel Services – Salaries</b>	<b>\$63,590.99</b>	<b>\$61,116.35</b>		<b>\$124,707.34</b>
<b>200 Personnel Services – Employee Benefits</b>				
210 Group Insurance – Contracted Provider	13,035.47	10,027.02		23,062.49
220 Social Security Contributions	4,759.01	4,569.95		9,328.96
230 PSERS Retirement Contributions	18,362.54	18,891.48		37,254.02
250 Unemployment Compensation	57.52	52.70		110.22
260 Workers' Compensation	407.97	392.00		799.97
292 Health Savings Accounts	2,954.99	2,955.01		5,910.00
<b>Total Personnel Services – Employee Benefits</b>	<b>\$39,577.50</b>	<b>\$36,888.16</b>		<b>\$76,465.66</b>
<b>300 Purchased Professional and Technical Services</b>				
324 Professional Educational Services – Employee Training and Development Services	5,784.00	5,784.00		11,568.00
340 Technical Services	2,000.00	2,000.00		4,000.00
<b>Total Purchased Professional and Technical Services</b>	<b>\$7,784.00</b>	<b>\$7,784.00</b>		<b>\$15,568.00</b>
<b>400 Purchased Property Services</b>				
430 Repairs and Maintenance Services	28.05	1,918.18		1,946.23
440 Rentals	95,466.60	54,964.00		150,430.60
<b>Total Purchased Property Services</b>	<b>\$95,494.65</b>	<b>\$56,882.18</b>		<b>\$152,376.83</b>
<b>500 Other Purchased Services</b>				
530 Communications		90.47		90.47
580 Travel		192.41		192.41
<b>Total Other Purchased Services</b>		<b>\$282.88</b>		<b>\$282.88</b>
<b>600 Supplies</b>				
650 Supplies & Fees – Technology Related	80,754.95	129,697.09		210,452.04
<b>Total Supplies</b>	<b>\$80,754.95</b>	<b>\$129,697.09</b>		<b>\$210,452.04</b>
<b>700 Property</b>				
756 Capitalized Technology Hardware and Equipment – Original	21,310.51	19,890.00		41,200.51
<b>Total Property</b>	<b>\$21,310.51</b>	<b>\$19,890.00</b>		<b>\$41,200.51</b>
<b>Total 2220 Technology Support Services</b>	<b>\$308,512.60</b>	<b>\$312,540.66</b>		<b>\$621,053.26</b>



**General Fund (10)**

**2250 School Library Services**

	<u>Elementary</u>	<u>Secondary</u>	<u>Federal</u>	<u>Total</u>
<b>100 Personnel Services – Salaries</b>				
100 Personnel Services – Salaries	93,353.92	47,427.00		140,780.92
<b>Total Personnel Services – Salaries</b>	<b>\$93,353.92</b>	<b>\$47,427.00</b>		<b>\$140,780.92</b>
<b>200 Personnel Services – Employee Benefits</b>				
210 Group Insurance – Contracted Provider	15,143.44	18,392.49		33,535.93
220 Social Security Contributions	6,932.20	3,375.27		10,307.47
230 PSERS Retirement Contributions	30,405.51	15,447.08		45,852.59
250 Unemployment Compensation	57.95	28.83		86.78
260 Workers' Compensation	598.72	304.19		902.91
292 Health Savings Accounts		1,560.00		1,560.00
<b>Total Personnel Services – Employee Benefits</b>	<b>\$53,137.82</b>	<b>\$39,107.86</b>		<b>\$92,245.68</b>
<b>300 Purchased Professional and Technical Services</b>				
322 Professional Educational Services – Ius	3,543.65	4,510.10		8,053.75
329 Professional Educational Services – Other	3,035.31	2,348.07		5,383.38
<b>Total Purchased Professional and Technical Services</b>	<b>\$6,578.96</b>	<b>\$6,858.17</b>		<b>\$13,437.13</b>
<b>600 Supplies</b>				
610 General Supplies	377.59	1,157.77		1,535.36
640 Books and Periodicals	911.33	5,039.22		5,950.55
650 Supplies & Fees – Technology Related	2,304.00	5,633.66		7,937.66
<b>Total Supplies</b>	<b>\$3,592.92</b>	<b>\$11,830.65</b>		<b>\$15,423.57</b>
<b>Total 2250 School Library Services</b>	<b>\$156,663.62</b>	<b>\$105,223.68</b>		<b>\$261,887.30</b>

**General Fund (10)**

**2260 Instruction and Curriculum Development Services**

	<u>Elementary</u>	<u>Secondary</u>	<u>Federal</u>	<u>Total</u>
<b>100 Personnel Services – Salaries</b>				
100 Personnel Services – Salaries	110,561.06	110,810.52		221,371.58
<b>Total Personnel Services – Salaries</b>	<b>\$110,561.06</b>	<b>\$110,810.52</b>		<b>\$221,371.58</b>
<b>200 Personnel Services – Employee Benefits</b>				
210 Group Insurance – Contracted Provider	16,445.68	16,445.56		32,891.24
220 Social Security Contributions	8,533.42	8,444.16		16,977.58
230 PSERS Retirement Contributions	36,343.59	36,090.91		72,434.50
250 Unemployment Compensation	43.48	43.47		86.95
260 Workers' Compensation	718.32	710.64		1,428.96
292 Health Savings Accounts	3,501.20	3,397.49		6,898.69
<b>Total Personnel Services – Employee Benefits</b>	<b>\$65,585.69</b>	<b>\$65,132.23</b>		<b>\$130,717.92</b>
<b>300 Purchased Professional and Technical Services</b>				
329 Professional Educational Services – Other	4,000.00	4,000.00		8,000.00
<b>Total Purchased Professional and Technical Services</b>	<b>\$4,000.00</b>	<b>\$4,000.00</b>		<b>\$8,000.00</b>
<b>500 Other Purchased Services</b>				
580 Travel	629.80	286.41		916.21
<b>Total Other Purchased Services</b>	<b>\$629.80</b>	<b>\$286.41</b>		<b>\$916.21</b>
<b>600 Supplies</b>				
610 General Supplies	425.68	608.16		1,033.84
640 Books and Periodicals	5,210.47	5,876.66		11,087.13
<b>Total Supplies</b>	<b>\$5,636.15</b>	<b>\$6,484.82</b>		<b>\$12,120.97</b>
<b>Total 2260 Instruction and Curriculum Development Services</b>	<b>\$186,412.70</b>	<b>\$186,713.98</b>		<b>\$373,126.68</b>

**General Fund (10)**

<b>2270 Instructional Staff Professional Development Services</b>	<u>Elementary</u>	<u>Secondary</u>	<u>Federal</u>	<u>Total</u>
<b>100 Personnel Services – Salaries</b>				
100 Personnel Services – Salaries	45,131.09	21,311.24		66,442.33
<b>Total Personnel Services – Salaries</b>	<b>\$45,131.09</b>	<b>\$21,311.24</b>		<b>\$66,442.33</b>
<b>200 Personnel Services – Employee Benefits</b>				
220 Social Security Contributions	3,378.52	1,603.83		4,982.35
230 PSERS Retirement Contributions	14,710.59	6,943.66		21,654.25
240 Tuition Reimbursement	57,648.00	48,627.00		106,275.00
250 Unemployment Compensation	14.89	6.38		21.27
260 Workers' Compensation	291.00	136.77		427.77
292 Health Savings Accounts	776.81	6.32		783.13
<b>Total Personnel Services – Employee Benefits</b>	<b>\$76,819.81</b>	<b>\$57,323.96</b>		<b>\$134,143.77</b>
<b>300 Purchased Professional and Technical Services</b>				
324 Professional Educational Services – Employee Training and Development Services	1,800.00	1,800.00		3,600.00
<b>Total Purchased Professional and Technical Services</b>	<b>\$1,800.00</b>	<b>\$1,800.00</b>		<b>\$3,600.00</b>
<b>500 Other Purchased Services</b>				
580 Travel	1,545.69	6,088.29		7,633.98
<b>Total Other Purchased Services</b>	<b>\$1,545.69</b>	<b>\$6,088.29</b>		<b>\$7,633.98</b>
<b>Total 2270 Instructional Staff Professional Development Services</b>	<b>\$125,296.59</b>	<b>\$86,523.49</b>		<b>\$211,820.08</b>

**General Fund (10)**

**2300 Support Services – Administration**

	<u>Elementary</u>	<u>Secondary</u>	<u>Federal</u>	<u>Total</u>
<b>100 Personnel Services – Salaries</b>				
100 Personnel Services – Salaries	314,522.89	425,371.89		937,690.14
<b>Total Personnel Services – Salaries</b>	<b>\$314,522.89</b>	<b>\$425,371.89</b>		<b>\$937,690.14</b>
<b>200 Personnel Services – Employee Benefits</b>				
210 Group Insurance – Contracted Provider	54,225.21	39,723.01		106,287.40
220 Social Security Contributions	23,454.92	32,174.30		70,492.57
230 PSERS Retirement Contributions	98,967.56	134,523.86		284,409.14
250 Unemployment Compensation	234.03	305.75		599.53
260 Workers' Compensation	2,023.78	2,728.19		6,022.44
292 Health Savings Accounts	39,085.00	4,695.00		45,777.50
<b>Total Personnel Services – Employee Benefits</b>	<b>\$217,990.50</b>	<b>\$214,150.11</b>		<b>\$513,588.58</b>
<b>300 Purchased Professional and Technical Services</b>				
329 Professional Educational Services – Other	396.00			396.00
330 Other Professional Services				137,058.92
<b>Total Purchased Professional and Technical Services</b>	<b>\$396.00</b>			<b>\$137,454.92</b>
<b>400 Purchased Property Services</b>				
430 Repairs and Maintenance Services		1,076.32		1,076.32
440 Rentals	928.00	2,804.28		3,732.28
<b>Total Purchased Property Services</b>	<b>\$928.00</b>	<b>\$3,880.60</b>		<b>\$4,808.60</b>
<b>500 Other Purchased Services</b>				
520 Insurance – General				19,114.00
530 Communications	926.56	3,023.54		3,950.10
549 Other Advertising/Public Relations				18,708.56
580 Travel	3,727.13	2,895.62		14,234.03
<b>Total Other Purchased Services</b>	<b>\$4,653.69</b>	<b>\$5,919.16</b>		<b>\$56,006.69</b>
<b>600 Supplies</b>				
610 General Supplies	8,093.38	9,042.97		38,984.41
630 Food	3,132.50	1,760.97		5,214.42
640 Books and Periodicals		47.80		127.45
650 Supplies & Fees – Technology Related	15,970.96	13,050.50		48,148.50
<b>Total Supplies</b>	<b>\$27,196.84</b>	<b>\$23,902.24</b>		<b>\$92,474.78</b>
<b>800 Other Objects</b>				
810 Dues and Fees	1,733.00	1,190.00		7,731.57
890 Miscellaneous Expenditures		(35.00)		(35.00)
<b>Total Other Objects</b>	<b>\$1,733.00</b>	<b>\$1,155.00</b>		<b>\$7,696.57</b>
<b>Total 2300 Support Services – Administration</b>	<b>\$567,420.92</b>	<b>\$674,379.00</b>		<b>\$1,749,720.28</b>

**General Fund (10)**

**2310 Board Services**

Elementary

Secondary

Federal

Total

**500 Other Purchased Services**

520 Insurance – General				13,416.00
549 Other Advertising/Public Relations				18,708.56
580 Travel				1,141.60

<b>Total Other Purchased Services</b>				<b>\$33,266.16</b>
---------------------------------------	--	--	--	--------------------

**600 Supplies**

610 General Supplies				553.90
650 Supplies & Fees – Technology Related				17,148.04

<b>Total Supplies</b>				<b>\$17,701.94</b>
-----------------------	--	--	--	--------------------

**800 Other Objects**

810 Dues and Fees				3,618.57
-------------------	--	--	--	----------

<b>Total Other Objects</b>				<b>\$3,618.57</b>
----------------------------	--	--	--	-------------------

<b>Total 2310 Board Services</b>				<b>\$54,586.67</b>
----------------------------------	--	--	--	--------------------

**General Fund (10)**

**2320 Board Treasurer Services**

Elementary

Secondary

Federal

Total

**500 Other Purchased Services**

520 Insurance – General

531.00

**Total Other Purchased Services**

**\$531.00**

**Total 2320 Board Treasurer Services**

**\$531.00**

**General Fund (10)**

	<u>Elementary</u>	<u>Secondary</u>	<u>Federal</u>	<u>Total</u>
<b>2330 Tax Assessment and Collection Services</b>				
<b>100 Personnel Services – Salaries</b>				
100 Personnel Services – Salaries				40,012.50
<b>Total Personnel Services – Salaries</b>				<b>\$40,012.50</b>
<b>200 Personnel Services – Employee Benefits</b>				
220 Social Security Contributions				3,061.30
250 Unemployment Compensation				1.80
260 Workers' Compensation				256.63
<b>Total Personnel Services – Employee Benefits</b>				<b>\$3,319.73</b>
<b>300 Purchased Professional and Technical Services</b>				
330 Other Professional Services				97,023.92
<b>Total Purchased Professional and Technical Services</b>				<b>\$97,023.92</b>
<b>500 Other Purchased Services</b>				
520 Insurance – General				5,167.00
<b>Total Other Purchased Services</b>				<b>\$5,167.00</b>
<b>600 Supplies</b>				
610 General Supplies				13,927.53
<b>Total Supplies</b>				<b>\$13,927.53</b>
<b>Total 2330 Tax Assessment and Collection Services</b>				<b>\$159,450.68</b>

**General Fund (10)**

**2350 Legal and Accounting Services**

Elementary

Secondary

Federal

Total

**300 Purchased Professional and Technical Services**

330 Other Professional Services

40,035.00

**Total Purchased Professional and Technical Services**

**\$40,035.00**

**Total 2350 Legal and Accounting Services**

**\$40,035.00**



General Fund (10)

2360 Office of the Superintendent / Executive Director Services

Elementary

Secondary

Federal

Total

100 Personnel Services – Salaries

100 Personnel Services – Salaries

157,782.86

**Total Personnel Services – Salaries**

**\$157,782.86**

200 Personnel Services – Employee Benefits

210 Group Insurance – Contracted Provider

12,339.18

220 Social Security Contributions

11,802.05

230 PSERS Retirement Contributions

50,917.72

250 Unemployment Compensation

57.95

260 Workers' Compensation

1,013.84

292 Health Savings Accounts

1,997.50

**Total Personnel Services – Employee Benefits**

**\$78,128.24**

500 Other Purchased Services

580 Travel

6,469.68

**Total Other Purchased Services**

**\$6,469.68**

600 Supplies

610 General Supplies

1,576.67

630 Food

320.95

640 Books and Periodicals

79.65

650 Supplies & Fees – Technology Related

1,979.00

**Total Supplies**

**\$3,956.27**

800 Other Objects

810 Dues and Fees

1,190.00

**Total Other Objects**

**\$1,190.00**

**Total 2360 Office of the Superintendent / Executive Director Services**

**\$247,527.05**

**General Fund (10)**

**2380 Office of the Principal Services**

	<u>Elementary</u>	<u>Secondary</u>	<u>Federal</u>	<u>Total</u>
<b>100 Personnel Services – Salaries</b>				
100 Personnel Services – Salaries	314,522.89	425,371.89		739,894.78
<b>Total Personnel Services – Salaries</b>	<b>\$314,522.89</b>	<b>\$425,371.89</b>		<b>\$739,894.78</b>
<b>200 Personnel Services – Employee Benefits</b>				
210 Group Insurance – Contracted Provider	54,225.21	39,723.01		93,948.22
220 Social Security Contributions	23,454.92	32,174.30		55,629.22
230 PSERS Retirement Contributions	98,967.56	134,523.86		233,491.42
250 Unemployment Compensation	234.03	305.75		539.78
260 Workers' Compensation	2,023.78	2,728.19		4,751.97
292 Health Savings Accounts	39,085.00	4,695.00		43,780.00
<b>Total Personnel Services – Employee Benefits</b>	<b>\$217,990.50</b>	<b>\$214,150.11</b>		<b>\$432,140.61</b>
<b>300 Purchased Professional and Technical Services</b>				
329 Professional Educational Services – Other	396.00			396.00
<b>Total Purchased Professional and Technical Services</b>	<b>\$396.00</b>			<b>\$396.00</b>
<b>400 Purchased Property Services</b>				
430 Repairs and Maintenance Services		1,076.32		1,076.32
440 Rentals	928.00	2,804.28		3,732.28
<b>Total Purchased Property Services</b>	<b>\$928.00</b>	<b>\$3,880.60</b>		<b>\$4,808.60</b>
<b>500 Other Purchased Services</b>				
530 Communications	926.56	3,023.54		3,950.10
580 Travel	3,727.13	2,895.62		6,622.75
<b>Total Other Purchased Services</b>	<b>\$4,653.69</b>	<b>\$5,919.16</b>		<b>\$10,572.85</b>
<b>600 Supplies</b>				
610 General Supplies	8,093.38	9,042.97		17,136.35
630 Food	3,132.50	1,760.97		4,893.47
640 Books and Periodicals		47.80		47.80
650 Supplies & Fees – Technology Related	15,970.96	13,050.50		29,021.46
<b>Total Supplies</b>	<b>\$27,196.84</b>	<b>\$23,902.24</b>		<b>\$51,099.08</b>
<b>800 Other Objects</b>				
810 Dues and Fees	1,733.00	1,190.00		2,923.00
890 Miscellaneous Expenditures		(35.00)		(35.00)
<b>Total Other Objects</b>	<b>\$1,733.00</b>	<b>\$1,155.00</b>		<b>\$2,888.00</b>
<b>Total 2380 Office of the Principal Services</b>	<b>\$567,420.92</b>	<b>\$674,379.00</b>		<b>\$1,241,799.92</b>

LEA : 111312503    Huntingdon Area SD

Printed 11/19/2018 8:45:11 AM

**General Fund (10)**

**2390 Other Administration Services**

Elementary

Secondary

Federal

Total

**600 Supplies**

610 General Supplies

5,789.96

**Total Supplies**

**\$5,789.96**

**Total 2390 Other Administration Services**

**\$5,789.96**

**General Fund (10)**

	<u>Elementary</u>	<u>Secondary</u>	<u>Federal</u>	<u>Total</u>
<b>2400 Support Services – Pupil Health</b>				
<b>100 Personnel Services – Salaries</b>				
100 Personnel Services – Salaries				187,215.32
<b>Total Personnel Services – Salaries</b>				<b>\$187,215.32</b>
<b>200 Personnel Services – Employee Benefits</b>				
210 Group Insurance – Contracted Provider				79,018.77
220 Social Security Contributions				13,147.81
230 PSERS Retirement Contributions				60,976.12
250 Unemployment Compensation				211.67
260 Workers' Compensation				1,207.92
292 Health Savings Accounts				7,800.00
<b>Total Personnel Services – Employee Benefits</b>				<b>\$162,362.29</b>
<b>300 Purchased Professional and Technical Services</b>				
330 Other Professional Services				14,495.68
<b>Total Purchased Professional and Technical Services</b>				<b>\$14,495.68</b>
<b>500 Other Purchased Services</b>				
580 Travel				739.08
<b>Total Other Purchased Services</b>				<b>\$739.08</b>
<b>600 Supplies</b>				
610 General Supplies				6,341.75
<b>Total Supplies</b>				<b>\$6,341.75</b>
<b>Total 2400 Support Services – Pupil Health</b>				<b>\$371,154.12</b>

**General Fund (10)**

**2440 Nursing Services**

Elementary                      Secondary                      Federal                      Total

**100 Personnel Services – Salaries**

100 Personnel Services – Salaries 187,215.32

**Total Personnel Services – Salaries \$187,215.32**

**200 Personnel Services – Employee Benefits**

210 Group Insurance – Contracted Provider 79,018.77

220 Social Security Contributions 13,147.81

230 PSERS Retirement Contributions 60,976.12

250 Unemployment Compensation 211.67

260 Workers' Compensation 1,207.92

292 Health Savings Accounts 7,800.00

**Total Personnel Services – Employee Benefits \$162,362.29**

**300 Purchased Professional and Technical Services**

330 Other Professional Services 14,495.68

**Total Purchased Professional and Technical Services \$14,495.68**

**500 Other Purchased Services**

580 Travel 739.08

**Total Other Purchased Services \$739.08**

**600 Supplies**

610 General Supplies 6,341.75

**Total Supplies \$6,341.75**

**Total 2440 Nursing Services \$371,154.12**

LEA : 111312503    Huntingdon Area SD

Printed 11/19/2018 8:45:11 AM

**General Fund (10)**

	<u>Elementary</u>	<u>Secondary</u>	<u>Federal</u>	<u>Total</u>
<b>2500 Support Services – Business</b>				
<b>100 Personnel Services – Salaries</b>				
100 Personnel Services – Salaries				198,586.96
<b>Total Personnel Services – Salaries</b>				<b>\$198,586.96</b>
<b>200 Personnel Services – Employee Benefits</b>				
210 Group Insurance – Contracted Provider				49,917.35
220 Social Security Contributions				14,434.43
230 PSERS Retirement Contributions				57,861.96
250 Unemployment Compensation				142.39
260 Workers' Compensation				1,273.60
292 Health Savings Accounts				4,940.00
<b>Total Personnel Services – Employee Benefits</b>				<b>\$128,569.73</b>
<b>300 Purchased Professional and Technical Services</b>				
324 Professional Educational Services – Employee Training and Development Services				415.00
330 Other Professional Services				48,878.46
<b>Total Purchased Professional and Technical Services</b>				<b>\$49,293.46</b>
<b>400 Purchased Property Services</b>				
440 Rentals				12,129.63
<b>Total Purchased Property Services</b>				<b>\$12,129.63</b>
<b>500 Other Purchased Services</b>				
530 Communications				4,378.20
580 Travel				3,458.37
<b>Total Other Purchased Services</b>				<b>\$7,836.57</b>
<b>600 Supplies</b>				
610 General Supplies				5,047.35
650 Supplies & Fees – Technology Related				16,809.98
<b>Total Supplies</b>				<b>\$21,857.33</b>
<b>800 Other Objects</b>				
810 Dues and Fees				5,989.37
<b>Total Other Objects</b>				<b>\$5,989.37</b>
<b>Total 2500 Support Services – Business</b>				<b>\$424,263.05</b>

**General Fund (10)**

**2590 Other Support Services – Business**

Elementary                      Secondary                      Federal                      Total

<b>100</b>	<b><u>Personnel Services – Salaries</u></b>			
	100 Personnel Services – Salaries			198,586.96
<b>Total Personnel Services – Salaries</b>				<b>\$198,586.96</b>
<b>200</b>	<b><u>Personnel Services – Employee Benefits</u></b>			
	210 Group Insurance – Contracted Provider			49,917.35
	220 Social Security Contributions			14,434.43
	230 PSERS Retirement Contributions			57,861.96
	250 Unemployment Compensation			142.39
	260 Workers' Compensation			1,273.60
	292 Health Savings Accounts			4,940.00
<b>Total Personnel Services – Employee Benefits</b>				<b>\$128,569.73</b>
<b>300</b>	<b><u>Purchased Professional and Technical Services</u></b>			
	324 Professional Educational Services – Employee Training and Development Services			415.00
	330 Other Professional Services			48,878.46
<b>Total Purchased Professional and Technical Services</b>				<b>\$49,293.46</b>
<b>400</b>	<b><u>Purchased Property Services</u></b>			
	440 Rentals			12,129.63
<b>Total Purchased Property Services</b>				<b>\$12,129.63</b>
<b>500</b>	<b><u>Other Purchased Services</u></b>			
	530 Communications			4,378.20
	580 Travel			3,458.37
<b>Total Other Purchased Services</b>				<b>\$7,836.57</b>
<b>600</b>	<b><u>Supplies</u></b>			
	610 General Supplies			5,047.35
	650 Supplies & Fees – Technology Related			16,809.98
<b>Total Supplies</b>				<b>\$21,857.33</b>
<b>800</b>	<b><u>Other Objects</u></b>			
	810 Dues and Fees			5,989.37
<b>Total Other Objects</b>				<b>\$5,989.37</b>
<b>Total 2590 Other Support Services – Business</b>				<b>\$424,263.05</b>

**General Fund (10)**

**2600 Operation and Maintenance of Plant Services**

Elementary                      Secondary                      Federal                      Total

<b>100</b>	<b><u>Personnel Services – Salaries</u></b>			
	100 Personnel Services – Salaries			792,609.24
<b>Total Personnel Services – Salaries</b>				<b>\$792,609.24</b>
<b>200</b>	<b><u>Personnel Services – Employee Benefits</u></b>			
	210 Group Insurance – Contracted Provider			172,438.11
	220 Social Security Contributions			58,878.40
	230 PSERS Retirement Contributions			240,973.92
	250 Unemployment Compensation			810.68
	260 Workers' Compensation			5,084.63
	292 Health Savings Accounts			21,965.14
<b>Total Personnel Services – Employee Benefits</b>				<b>\$500,150.88</b>
<b>300</b>	<b><u>Purchased Professional and Technical Services</u></b>			
	330 Other Professional Services			13,046.25
	340 Technical Services			7,748.26
	350 Security / Safety Services			57,450.00
<b>Total Purchased Professional and Technical Services</b>				<b>\$78,244.51</b>
<b>400</b>	<b><u>Purchased Property Services</u></b>			
	410 Cleaning Services			20,866.56
	420 Utility Services			74,171.05
	430 Repairs and Maintenance Services			95,211.73
	440 Rentals			5,315.35
	460 Extermination Services			4,574.00
<b>Total Purchased Property Services</b>				<b>\$200,138.69</b>
<b>500</b>	<b><u>Other Purchased Services</u></b>			
	522 Automotive Liability Insurance			3,974.00
	523 General Property and Liability Insurance			77,139.00
	530 Communications			27,419.86
	580 Travel			888.12
<b>Total Other Purchased Services</b>				<b>\$109,420.98</b>
<b>600</b>	<b><u>Supplies</u></b>			
	610 General Supplies	60,084.30	102,502.80	162,587.10
	620 Energy			494,124.60
<b>Total Supplies</b>		<b>\$60,084.30</b>	<b>\$102,502.80</b>	<b>\$656,711.70</b>
<b>700</b>	<b><u>Property</u></b>			
	762 Capitalized Equipment - Replacement			14,673.53
<b>Total Property</b>				<b>\$14,673.53</b>
<b>800</b>	<b><u>Other Objects</u></b>			
	810 Dues and Fees			495.15
<b>Total Other Objects</b>				<b>\$495.15</b>
<b>Total 2600 Operation and Maintenance of Plant Services</b>		<b>\$60,084.30</b>	<b>\$102,502.80</b>	<b>\$2,352,444.68</b>



**General Fund (10)**

**2660 Safety and Security Services**

Elementary

Secondary

Federal

Total

**300 Purchased Professional and Technical Services**

350 Security / Safety Services

57,450.00

**Total Purchased Professional and Technical Services**

**\$57,450.00**

**600 Supplies**

610 General Supplies

513.75

533.65

1,047.40

**Total Supplies**

**\$513.75**

**\$533.65**

**\$1,047.40**

**Total 2660 Safety and Security Services**

**\$513.75**

**\$533.65**

**\$58,497.40**

**General Fund (10)**

**2690 Other Operation and Maintenance of Plant Services**

	<u>Elementary</u>	<u>Secondary</u>	<u>Federal</u>	<u>Total</u>
<b>100 Personnel Services – Salaries</b>				
100 Personnel Services – Salaries				792,609.24
<b>Total Personnel Services – Salaries</b>				<b>\$792,609.24</b>
<b>200 Personnel Services – Employee Benefits</b>				
210 Group Insurance – Contracted Provider				172,438.11
220 Social Security Contributions				58,878.40
230 PSERS Retirement Contributions				240,973.92
250 Unemployment Compensation				810.68
260 Workers' Compensation				5,084.63
292 Health Savings Accounts				21,965.14
<b>Total Personnel Services – Employee Benefits</b>				<b>\$500,150.88</b>
<b>300 Purchased Professional and Technical Services</b>				
330 Other Professional Services				13,046.25
340 Technical Services				7,748.26
<b>Total Purchased Professional and Technical Services</b>				<b>\$20,794.51</b>
<b>400 Purchased Property Services</b>				
410 Cleaning Services				20,866.56
420 Utility Services				74,171.05
430 Repairs and Maintenance Services				95,211.73
440 Rentals				5,315.35
460 Extermination Services				4,574.00
<b>Total Purchased Property Services</b>				<b>\$200,138.69</b>
<b>500 Other Purchased Services</b>				
522 Automotive Liability Insurance				3,974.00
523 General Property and Liability Insurance				77,139.00
530 Communications				27,419.86
580 Travel				888.12
<b>Total Other Purchased Services</b>				<b>\$109,420.98</b>
<b>600 Supplies</b>				
610 General Supplies	59,570.55	101,969.15		161,539.70
620 Energy				494,124.60
<b>Total Supplies</b>	<b>\$59,570.55</b>	<b>\$101,969.15</b>		<b>\$655,664.30</b>
<b>700 Property</b>				
762 Capitalized Equipment - Replacement				14,673.53
<b>Total Property</b>				<b>\$14,673.53</b>
<b>800 Other Objects</b>				
810 Dues and Fees				495.15
<b>Total Other Objects</b>				<b>\$495.15</b>
<b>Total 2690 Other Operation and Maintenance of Plant Services</b>	<b>\$59,570.55</b>	<b>\$101,969.15</b>		<b>\$2,293,947.28</b>

**General Fund (10)**

**2700 Student Transportation Services**

Elementary

Secondary

Federal

Total

**400 Purchased Property Services**

440 Rentals 10,749.56

**Total Purchased Property Services \$10,749.56**

**500 Other Purchased Services**

511 Student Transportation Services from Another LEA Within the State 4,011.92

513 Contracted Carriers 1,989,971.75

516 Student Transportation Services From the IU 24,759.01

580 Travel 214.17

**Total Other Purchased Services \$2,018,956.85**

**600 Supplies**

610 General Supplies 122.09

650 Supplies & Fees – Technology Related 6,650.00

**Total Supplies \$6,772.09**

**Total 2700 Student Transportation Services \$2,036,478.50**

**General Fund (10)**

**2750 Nonpublic Transportation**

Elementary

Secondary

Federal

Total

**500 Other Purchased Services**

513 Contracted Carriers

221,626.36

**Total Other Purchased Services**

**\$221,626.36**

**Total 2750 Nonpublic Transportation**

**\$221,626.36**

**General Fund (10)**

**2790 Other Student Transportation Services**

Elementary

Secondary

Federal

Total

**400 Purchased Property Services**

440 Rentals 10,749.56

**Total Purchased Property Services**

**\$10,749.56**

**500 Other Purchased Services**

511 Student Transportation Services from Another LEA Within the State 4,011.92

513 Contracted Carriers 1,768,345.39

516 Student Transportation Services From the IU 24,759.01

580 Travel 214.17

**Total Other Purchased Services**

**\$1,797,330.49**

**600 Supplies**

610 General Supplies 122.09

650 Supplies & Fees – Technology Related 6,650.00

**Total Supplies**

**\$6,772.09**

**Total 2790 Other Student Transportation Services**

**\$1,814,852.14**

**General Fund (10)**

**2800 Support Services – Central**

Elementary

Secondary

Federal

Total

**500 Other Purchased Services**

580 Travel

2,177.48

2,177.48

**Total Other Purchased Services**

**\$2,177.48**

**\$2,177.48**

**800 Other Objects**

890 Miscellaneous Expenditures

200.00

**Total Other Objects**

**\$200.00**

**Total 2800 Support Services – Central**

**\$2,177.48**

**\$2,377.48**

**General Fund (10)**

**2830 Staff Services**

Elementary

Secondary

Federal

Total

**800 Other Objects**

890 Miscellaneous Expenditures

200.00

**Total Other Objects**

**\$200.00**

**Total 2830 Staff Services**

**\$200.00**

LEA : 111312503    Huntingdon Area SD

Printed 11/19/2018 8:45:11 AM

**General Fund (10)**

**2832 Recruitment and Placement Services**

Elementary

Secondary

Federal

Total

**800 Other Objects**

890 Miscellaneous Expenditures

200.00

**Total Other Objects**

**\$200.00**

**Total 2832 Recruitment and Placement Services**

**\$200.00**



**General Fund (10)**

**2850 State and Federal Agency Liaison Services**

Elementary

Secondary

Federal

Total

**500 Other Purchased Services**

580 Travel

2,177.48

2,177.48

**Total Other Purchased Services**

**\$2,177.48**

**\$2,177.48**

**Total 2850 State and Federal Agency Liaison Services**

**\$2,177.48**

**\$2,177.48**

**General Fund (10)**

**3000 Operation of Non-Instructional Services**

**Total**

**100 Personnel Services – Salaries**

100 Personnel Services – Salaries 254,108.00

**Total Personnel Services – Salaries \$254,108.00**

**200 Personnel Services – Employee Benefits**

220 Social Security Contributions 19,198.39

230 PSERS Retirement Contributions 81,675.23

250 Unemployment Compensation 1,296.29

260 Workers' Compensation 3,049.24

292 Health Savings Accounts 1,663.15

**Total Personnel Services – Employee Benefits \$106,882.30**

**300 Purchased Professional and Technical Services**

330 Other Professional Services 23,309.51

350 Security / Safety Services 3,275.20

390 Other Purchased Professional and Technical Services 33,655.00

**Total Purchased Professional and Technical Services \$60,239.71**

**400 Purchased Property Services**

430 Repairs and Maintenance Services 4,189.20

440 Rentals 7,360.00

**Total Purchased Property Services \$11,549.20**

**500 Other Purchased Services**

510 Student Transportation Services 78,930.44

530 Communications 35.86

580 Travel 20,600.30

**Total Other Purchased Services \$99,566.60**

**600 Supplies**

610 General Supplies 54,371.77

620 Energy 28.55

**Total Supplies \$54,400.32**

**800 Other Objects**

810 Dues and Fees 7,544.00

**Total Other Objects \$7,544.00**

**Total 3000 Operation of Non-Instructional Services \$594,290.13**

**General Fund (10)**

**3200 Student Activities**

Elementary

Secondary

Federal

Total

**100 Personnel Services – Salaries**

100 Personnel Services – Salaries

254,108.00

**Total Personnel Services – Salaries**

**\$254,108.00**

**200 Personnel Services – Employee Benefits**

220 Social Security Contributions

19,198.39

230 PSERS Retirement Contributions

81,675.23

250 Unemployment Compensation

1,296.29

260 Workers' Compensation

3,049.24

292 Health Savings Accounts

1,663.15

**Total Personnel Services – Employee Benefits**

**\$106,882.30**

**300 Purchased Professional and Technical Services**

330 Other Professional Services

23,309.51

350 Security / Safety Services

3,275.20

390 Other Purchased Professional and Technical Services

33,655.00

**Total Purchased Professional and Technical Services**

**\$60,239.71**

**400 Purchased Property Services**

430 Repairs and Maintenance Services

4,189.20

440 Rentals

7,360.00

**Total Purchased Property Services**

**\$11,549.20**

**500 Other Purchased Services**

510 Student Transportation Services

78,930.44

530 Communications

35.86

580 Travel

20,600.30

**Total Other Purchased Services**

**\$99,566.60**

**600 Supplies**

610 General Supplies

54,371.77

620 Energy

28.55

**Total Supplies**

**\$54,400.32**

**800 Other Objects**

810 Dues and Fees

7,544.00

**Total Other Objects**

**\$7,544.00**

**Total 3200 Student Activities**

**\$594,290.13**

**General Fund (10)**

**5000 Other Expenditures and Financing Uses**

**Total**

**800 Other Objects**

830 Interest 825,369.50

880 Refunds of Prior Years' Receipts 1,464.00

**Total Other Objects \$826,833.50**

**900 Other Uses of Funds**

910 Redemption of Principal 1,442,000.00

930 Fund Transfers 150,000.00

**Total Other Uses of Funds \$1,592,000.00**

**Total 5000 Other Expenditures and Financing Uses \$2,418,833.50**

LEA : 111312503    Huntingdon Area SD

Printed 11/19/2018 8:45:18 AM

**General Fund (10)**

**5100 Debt Service / Other Expenditures and Financing Uses**

Elementary

Secondary

Federal

Total

**800 Other Objects**

830 Interest 825,369.50

880 Refunds of Prior Years' Receipts 1,464.00

**Total Other Objects \$826,833.50**

**900 Other Uses of Funds**

910 Redemption of Principal 1,442,000.00

**Total Other Uses of Funds \$1,442,000.00**

**Total 5100 Debt Service / Other Expenditures and Financing Uses \$2,268,833.50**

LEA : 111312503    Huntingdon Area SD

Printed 11/19/2018 8:45:18 AM

**General Fund (10)**

	<u>Elementary</u>	<u>Secondary</u>	<u>Federal</u>	<u>Total</u>
<b>5110 Debt Service</b>				
<b>800 Other Objects</b>				
830 Interest				825,369.50
<b>Total Other Objects</b>				<b>\$825,369.50</b>
<b>900 Other Uses of Funds</b>				
910 Redemption of Principal				1,442,000.00
<b>Total Other Uses of Funds</b>				<b>\$1,442,000.00</b>
<b>Total 5110 Debt Service</b>				<b>\$2,267,369.50</b>

LEA : 111312503    Huntingdon Area SD

Printed 11/19/2018 8:45:18 AM

**General Fund (10)**

**5130 Refund of Prior Year Revenues / Receipts**

Elementary

Secondary

Federal

Total

**800 Other Objects**

880 Refunds of Prior Years' Receipts

1,464.00

**Total Other Objects**

**\$1,464.00**

**Total 5130 Refund of Prior Year Revenues / Receipts**

**\$1,464.00**

LEA : 111312503    Huntingdon Area SD

Printed 11/19/2018 8:45:18 AM

**General Fund (10)**

	<u>Elementary</u>	<u>Secondary</u>	<u>Federal</u>	<u>Total</u>
<b>5200 Interfund Transfers – Out</b>				
<b>900 <u>Other Uses of Funds</u></b>				
930 Fund Transfers				150,000.00
<b>Total Other Uses of Funds</b>				<b>\$150,000.00</b>
<b>Total 5200 Interfund Transfers – Out</b>				<b>\$150,000.00</b>



LEA : 111312503    Huntingdon Area SD

Printed 11/19/2018 8:45:18 AM

**General Fund (10)**

**5250 Enterprise Fund Transfers**

Elementary

Secondary

Federal

Total

**900 Other Uses of Funds**

930 Fund Transfers

150,000.00

**Total Other Uses of Funds**

**\$150,000.00**

**Total 5250 Enterprise Fund Transfers**

**\$150,000.00**

LEA : 111312503    Huntingdon Area SD

Printed 11/19/2018 8:45:13 AM

**Capital Reserve Fund - § 1431 (32)**

**2000 Support Services**

**800 Other Objects**

810 Dues and Fees

**Total**

3,490.01

**Total Other Objects**

**\$3,490.01**

**Total 2000 Support Services**

**\$3,490.01**

LEA : 111312503    Huntingdon Area SD

Printed 11/19/2018 8:45:13 AM

Capital Reserve Fund - § 1431 (32)

2500 Support Services – Business

Elementary

Secondary

Federal

Total

800 Other Objects

810 Dues and Fees

3,490.01

**Total Other Objects**

**\$3,490.01**

**Total 2500 Support Services – Business**

**\$3,490.01**

LEA : 111312503    Huntingdon Area SD

Printed 11/19/2018 8:45:13 AM

Capital Reserve Fund - § 1431 (32)

2590 Other Support Services – Business

Elementary

Secondary

Federal

Total

800 Other Objects

810 Dues and Fees

3,490.01

**Total Other Objects**

**\$3,490.01**

**Total 2590 Other Support Services – Business**

**\$3,490.01**

**Capital Reserve Fund - § 1431 (32)**

**4000 Facilities Acquisition, Construction and Improvement Services**

**Total**

**300 Purchased Professional and Technical Services**

330 Other Professional Services 51,975.00

**Total Purchased Professional and Technical Services \$51,975.00**

**400 Purchased Property Services**

450 Construction Services 273,010.66

**Total Purchased Property Services \$273,010.66**

**700 Property**

762 Capitalized Equipment - Replacement 47,800.00

**Total Property \$47,800.00**

**Total 4000 Facilities Acquisition, Construction and Improvement Services \$372,785.66**

LEA : 111312503    Huntingdon Area SD

Printed 11/19/2018 8:45:16 AM

Capital Reserve Fund - § 1431 (32)

4200 Existing Site Improvement Services

Elementary

Secondary

Federal

Total

300 Purchased Professional and Technical Services

330 Other Professional Services

23,000.00

**Total Purchased Professional and Technical Services**

**\$23,000.00**

**Total 4200 Existing Site Improvement Services**

**\$23,000.00**

LEA : 111312503    Huntingdon Area SD

Printed 11/19/2018 8:45:16 AM

**Capital Reserve Fund - § 1431 (32)**

**4600 Existing Building Improvement Services**

Elementary

Secondary

Federal

Total

**300 Purchased Professional and Technical Services**

330 Other Professional Services

28,975.00

**Total Purchased Professional and Technical Services**

**\$28,975.00**

**400 Purchased Property Services**

450 Construction Services

273,010.66

**Total Purchased Property Services**

**\$273,010.66**

**700 Property**

762 Capitalized Equipment - Replacement

47,800.00

**Total Property**

**\$47,800.00**

**Total 4600 Existing Building Improvement Services**

**\$349,785.66**

	<u>General Fund(10)</u>	<u>Public Purpose Trust(27)</u>	<u>Other Compt Approved (28)</u>	<u>Athletic / Activity(29)</u>	<u>Capital Reserve (690. 1850)(31)</u>
<b>1000 Instruction</b>					
1100 Regular Programs - Elementary / Secondary	10,229,870.63				
1200 Special Programs - Elementary / Secondary	4,929,430.34				
1300 Vocational Education	950,178.95				
1400 Other Instructional Programs - Elementary / Secondary	211,281.12				
<b>Total Instruction</b>	<b>\$16,320,761.04</b>				
<b>2000 Support Services</b>					
2100 Support Services - Students	975,186.39				
2200 Support Services - Instructional Staff	1,467,887.32				
2300 Support Services - Administration	1,749,720.28				
2400 Support Services - Pupil Health	371,154.12				
2500 Support Services - Business	424,263.05				
2600 Operation and Maintenance of Plant Services	2,352,444.68				
2700 Student Transportation Services	2,036,478.50				
2800 Support Services - Central	2,377.48				
<b>Total Support Services</b>	<b>\$9,379,511.82</b>				
<b>3000 Operation of Non-Instructional Services</b>					
3200 Student Activities	594,290.13				
<b>Total Operation of Non-Instructional Services</b>	<b>\$594,290.13</b>				
<b>4000 Facilities Acquisition, Construction and Improvement Services</b>					
4200 Existing Site Improvement Services					
4600 Existing Building Improvement Services					
<b>Total Facilities Acquisition, Construction and Improvement</b>					
<b>5000 Other Expenditures and Financing Uses</b>					
5100 Debt Service / Other Expenditures and Financing Uses	2,268,833.50				
5200 Interfund Transfers - Out	150,000.00				
<b>Total Other Expenditures and Financing Uses</b>	<b>\$2,418,833.50</b>				
<b>TOTAL ACTUAL EXPENDITURES &amp; OTHER FINANCING USES</b>	<b>\$28,713,396.49</b>				



	<u>Capital Reserve (1431)(32)</u>	<u>Other Capital Projects Fund(39)</u>	<u>Debt Service(40)</u>	<u>Permanent(90)</u>	<u>Total</u>
<b>1000 Instruction</b>					
1100 Regular Programs - Elementary / Secondary					10,229,870.63
1200 Special Programs - Elementary / Secondary					4,929,430.34
1300 Vocational Education					950,178.95
1400 Other Instructional Programs - Elementary / Secondary					211,281.12
<b>Total Instruction</b>					<b>\$16,320,761.04</b>
<b>2000 Support Services</b>					
2100 Support Services - Students					975,186.39
2200 Support Services - Instructional Staff					1,467,887.32
2300 Support Services - Administration					1,749,720.28
2400 Support Services - Pupil Health					371,154.12
2500 Support Services - Business	3,490.01				427,753.06
2600 Operation and Maintenance of Plant Services					2,352,444.68
2700 Student Transportation Services					2,036,478.50
2800 Support Services - Central					2,377.48
<b>Total Support Services</b>	<b>\$3,490.01</b>				<b>\$9,383,001.83</b>
<b>3000 Operation of Non-Instructional Services</b>					
3200 Student Activities					594,290.13
<b>Total Operation of Non-Instructional Services</b>					<b>\$594,290.13</b>
<b>4000 Facilities Acquisition, Construction and Improvement Services</b>					
4200 Existing Site Improvement Services		23,000.00			23,000.00
4600 Existing Building Improvement Services		349,785.66			349,785.66
<b>Total Facilities Acquisition, Construction and Improvement</b>		<b>\$372,785.66</b>			<b>\$372,785.66</b>
<b>5000 Other Expenditures and Financing Uses</b>					
5100 Debt Service / Other Expenditures and Financing Uses					2,268,833.50
5200 Interfund Transfers - Out					150,000.00
<b>Total Other Expenditures and Financing Uses</b>					<b>\$2,418,833.50</b>
<b>TOTAL ACTUAL EXPENDITURES &amp; OTHER FINANCING USES</b>		<b>\$376,275.67</b>			<b>\$29,089,672.16</b>

LEA : 111312503    Huntingdon Area SD

Printed 11/19/2018 8:45:27 AM

**PSERS Salary Data (Salary Data should relate to the General Fund only)**

<b>Amount Description</b>	<b>Amount</b>
Total Salary Base for salaries subject to PSERS withholding	10,365,423.48
Total Federally Funded salaries subject to PSERS withholding	531,624.14
	<hr/>

**Title I Expenditure Data**

<b>Amount Description</b>	<b>Amount</b>
Expenditures Funded with Current Title I Funds	621,280.14
Expenditures Funded with Carry over Title I Funds	
	<hr/>
<b>Total Title I Expenditure Data</b>	<b>\$621,280.14</b>
	<hr/>

**Benefits for Staff Relative to Collective Bargaining Agreements**

	<b>OBJECT</b>	<b>COVERED</b>	<b>NOT COVERED</b>	<b>TOTAL</b>
<b>10 General Fund</b>	<b>No Self Insurance data to report</b>			
	211 Medical Insurance	1,996,114.09	168,667.55	2,164,781.64
	212 Dental Insurance	44,376.42	6,275.00	50,651.42
	215 Eye Care Insurance		1,410.40	1,410.40
	216 Prescription Insurance			
	271 Self-Insurance Medical Benefits			
	272 Self-Insurance Dental Benefits			
	275 Self-Insurance Eye Care Benefits			
	276 Self-Insurance Prescription Benefits			
	<b>FUND TOTAL</b>	<b>\$2,040,490.51</b>	<b>\$176,352.95</b>	<b>\$2,216,843.46</b>
<b>50 Enterprise Fund</b>	<b>No Self Insurance data to report</b>			
	211 Medical Insurance	142,237.88	5,846.40	148,084.28
	212 Dental Insurance	3,286.50	576.00	3,862.50
	215 Eye Care Insurance		44.88	44.88
	216 Prescription Insurance			
	271 Self-Insurance Medical Benefits			
	272 Self-Insurance Dental Benefits			
	275 Self-Insurance Eye Care Benefits			
	276 Self-Insurance Prescription Benefits			
	<b>FUND TOTAL</b>	<b>\$145,524.38</b>	<b>\$6,467.28</b>	<b>\$151,991.66</b>
<b>60 Internal Service Fund</b>	<b>No Self Insurance data to report</b>			
	211 Medical Insurance			
	212 Dental Insurance			
	215 Eye Care Insurance			
	216 Prescription Insurance			
	271 Self-Insurance Medical Benefits			
	272 Self-Insurance Dental Benefits			
	275 Self-Insurance Eye Care Benefits			
	276 Self-Insurance Prescription Benefits			
	<b>FUND TOTAL</b>			
<b>Total of All Funds</b>		<b>\$2,186,014.89</b>	<b>\$182,820.23</b>	<b>\$2,368,835.12</b>

LEA : 111312503    Huntingdon Area SD

Printed 11/19/2018 8:45:29 AM

Function	Special Education (Prior Year)	Nonspecial Education (Prior Year)	Total (Prior Year)	Special Education (Current Year)	Nonspecial Education (Current Year)	Total (Current Year)
2120 Guidance Services	87,910.90	360,248.66	448,159.56	99,588.04	369,241.83	468,829.87
2140 Psychological Services	39,701.83	162,693.49	202,395.32	39,279.12	145,634.87	184,913.99
2150 Speech Pathology and Audiology Services						
2160 Social Work Services						
2260 Instruction and Curriculum Development Services	68,845.25	282,119.80	350,965.05	79,258.94	293,867.74	373,126.68
2350 Legal and Accounting Services		42,756.00	42,756.00	432.00	39,603.00	40,035.00
2420 Medical Services						
2440 Nursing Services	57,360.81	235,057.90	292,418.71	76,970.65	285,383.47	362,354.12
2700 Student Transportation Services	379,755.37	1,556,193.31	1,935,948.68	432,585.30	1,603,893.20	2,036,478.50
<b>Total</b>	<b>\$633,574.16</b>	<b>\$2,639,069.16</b>	<b>\$3,272,643.32</b>	<b>\$728,114.05</b>	<b>\$2,737,624.11</b>	<b>\$3,465,738.16</b>

LEA : 111312503    Huntingdon Area SD

Printed 11/19/2018 8:45:30 AM

(PRINCIPAL AMOUNTS ONLY)

**GOVERNMENTAL FUNDS/ ACTIVITIES**

	Short-Term Borrowing	General Obligation Bonds/Notes	Authority Building Obligations	Other Long-Term Debt	Other Post-Employment Benefits (OPEB)	Compensated Absences	Net Pension Liability	Total
1. Debt at Beginning of Fiscal Year		30,421,000.00			518,478.00	1,252,499.00	42,421,000.00	74,612,977.00
2. Additional Debt Incurred During Year		27,501.00			5,036,822.00	46,523.00		5,110,846.00
3. Retirements and Repayments		1,442,000.00					836,000.00	2,278,000.00
4. Debt at End of Fiscal Year		29,006,501.00			5,555,300.00	1,299,022.00	41,585,000.00	77,445,823.00
5. Accreted Interest at End Of Fiscal Year								
6. Total Debt and Accreted Interest		29,006,501.00			5,555,300.00	1,299,022.00	41,585,000.00	77,445,823.00
7. Current Portion P&I - Due within 1 year		2,269,029.63						2,269,029.63
8. Interest Paid during current fiscal year		831,700.04						831,700.04

(PRINCIPAL AMOUNTS ONLY)

**PROPRIETARY FUNDS**

- 1. Debt at Beginning of Fiscal Year
- 2. Additional Debt Incurred During Year
- 3. Retirements and Repayments
- 4. Debt at End of Fiscal Year
- 5. Accreted Interest at End Of Fiscal Year
- 6. Total Debt and Accreted Interest
- 7. Current Portion P&I - Due within 1 year
- 8. Interest Paid during current fiscal year

**Total Principal and Interest Payments Made by Your School - All Funds**

Function	Fund		Principal (910)	Principal (920)	Interest (830)	Total (Principal +Interest)	Misc Other Uses (990)
5110	10	General Fund	1,442,000.00		825,369.50	2,267,369.50	
5110	20	Special Revenue Funds					
5110	30	Capital Projects Funds					
5110	40	Debt Service Fund					
5110	90	Permanent Fund					
5120	10	General Fund					
5120	20	Special Revenue Funds					
5120	30	Capital Projects Funds					
5120	40	Debt Service Fund					

<b>Total Debt Payments - Governmental Funds</b>			<b>\$1,442,000.00</b>		<b>\$825,369.50</b>	<b>\$2,267,369.50</b>	
---	--	--	-----------------------	--	---------------------	-----------------------	--

Function	Fund		Principal (910)	Principal (920)	Interest (830)	Total (Principal +Interest)
5110	50	Enterprise Fund				
5110	60	Internal Service Fund				
5120	50	Enterprise Fund				
5120	60	Internal Service Fund				

<b>Total Debt Payments - Proprietary Funds</b>						
--	--	--	--	--	--	--

**Debt Details**  
**Governmental Funds/ Activities**

Debt Category	Debt Issue Date (MM/YYYY)	Principal Amounts Only			Debt at End of Fiscal Year	Current Portion Due Within One Year (Principal and Interest)	Interest Paid During Fiscal Year
		Debt at Beginning of Fiscal Year	Additions	Reductions / Repayments			
General Obligation Bonds/Notes – CIB	12/2017		27,501.00		27,501.00		
General Obligation Bonds/Notes – CIB	12/2016	9,855,000.00		50,000.00	9,805,000.00	329,140.00	280,640.00
General Obligation Bonds/Notes – CIB	06/2015	9,815,000.00		40,000.00	9,775,000.00	370,915.00	331,715.00
General Obligation Bonds/Notes – CIB	07/2014	8,481,000.00		172,000.00	8,309,000.00	1,525,918.37	169,395.04
General Obligation Bonds/Notes – CIB	05/2013	1,175,000.00		1,175,000.00			11,750.00
General Obligation Bonds/Notes – CIB	01/2012	1,095,000.00		5,000.00	1,090,000.00	43,056.26	38,200.00
Compensated Absences		1,252,499.00	46,523.00		1,299,022.00		
Other Post-Employment Benefits (OPEB)		518,478.00	5,036,822.00		5,555,300.00		
Net Pension Liability		42,421,000.00		836,000.00	41,585,000.00		
<b>Totals for Debt Entered:</b>		<b>\$74,612,977.00</b>	<b>\$5,110,846.00</b>	<b>\$2,278,000.00</b>	<b>\$77,445,823.00</b>	<b>\$2,269,029.63</b>	<b>\$831,700.04</b>

**General Fund (10)**

**Section 1: Tuition/Purchased Services as Reported within Expenditure Detail**

	<b>Amount</b>
Tuition Reported in General Fund Expenditures 1000-560	2,753,761.22
Purchased Services in General Fund Expenditures 1000-594 and 1000-597	

<b>Section 1 Total</b>	<b>\$2,753,761.22</b>
------------------------	-----------------------

**Section 2: Tuition Paid to Institution Types During Fiscal Year**

	<b>Tuition Paid For Nonspecial Education</b>	<b>Tuition Paid For Special Education</b>	<b>Total</b>
1 1306 Institutions			
2 Institutionalized Children's Programs			
3 Juveniles Incarcerated in Adult Facilities	563.60		563.60
4 Residential Treatment Facilities			
5 Other Local Education Agencies	27,482.62	11,988.99	39,471.61
6 Brick and Mortar Charter Schools	504,138.50	696,153.90	1,200,292.40
7 Cyber Charter Schools	351,138.22	277,019.59	628,157.81
8 Career and Technology Centers	625,497.00		625,497.00
9 Approved Private Schools		230,226.34	230,226.34
10 PA Chartered Schools for the Deaf and Blind			
11 Private Residential Rehabilitative Institutions	10,065.00	18,423.46	28,488.46
12 Juvenile Detention Centers			
13 Special Program Jointures			
14 Other Tuition Not Included Elsewhere In This Section	1,064.00		1,064.00

<b>Section 2 Total</b>	<b>\$1,519,948.94</b>	<b>\$1,233,812.28</b>	<b>\$2,753,761.22</b>
------------------------	-----------------------	-----------------------	-----------------------



LEA : 111312503    Huntingdon Area SD

Printed 11/19/2018 8:45:32 AM

**Food Service / Cafeteria Operations Fund (51)**

**3000 Operation of Non-Instructional Services**

**Total**

**100 Personnel Services – Salaries**

100 Personnel Services – Salaries 487,089.74

**Total Personnel Services – Salaries \$487,089.74**

**200 Personnel Services – Employee Benefits**

210 Group Insurance – Contracted Provider 152,852.30

220 Social Security Contributions 26,727.00

230 PSERS Retirement Contributions 107,388.71

250 Unemployment Compensation 2,248.92

260 Workers' Compensation 4,558.51

292 Health Savings Accounts 19,867.50

**Total Personnel Services – Employee Benefits \$313,642.94**

**400 Purchased Property Services**

430 Repairs and Maintenance Services 14,219.60

**Total Purchased Property Services \$14,219.60**

**500 Other Purchased Services**

580 Travel 719.28

**Total Other Purchased Services \$719.28**

**600 Supplies**

610 General Supplies 34,528.73

630 Food 335,842.92

650 Supplies & Fees – Technology Related 497.00

**Total Supplies \$370,868.65**

**700 Property**

740 Depreciation 9,328.87

**Total Property \$9,328.87**

**800 Other Objects**

810 Dues and Fees 548.75

**Total Other Objects \$548.75**

**Total 3000 Operation of Non-Instructional Services \$1,196,417.83**

**Food Service / Cafeteria Operations Fund (51)**

	<u>Elementary</u>	<u>Secondary</u>	<u>Federal</u>	<u>Total</u>
<b>3100 Food Services</b>				
<b>100 Personnel Services – Salaries</b>				
100 Personnel Services – Salaries				487,089.74
<b>Total Personnel Services – Salaries</b>				<b>\$487,089.74</b>
<b>200 Personnel Services – Employee Benefits</b>				
210 Group Insurance – Contracted Provider				152,852.30
220 Social Security Contributions				26,727.00
230 PSERS Retirement Contributions				107,388.71
250 Unemployment Compensation				2,248.92
260 Workers' Compensation				4,558.51
292 Health Savings Accounts				19,867.50
<b>Total Personnel Services – Employee Benefits</b>				<b>\$313,642.94</b>
<b>400 Purchased Property Services</b>				
430 Repairs and Maintenance Services				14,219.60
<b>Total Purchased Property Services</b>				<b>\$14,219.60</b>
<b>500 Other Purchased Services</b>				
580 Travel				719.28
<b>Total Other Purchased Services</b>				<b>\$719.28</b>
<b>600 Supplies</b>				
610 General Supplies				34,528.73
630 Food				335,842.92
650 Supplies & Fees – Technology Related				497.00
<b>Total Supplies</b>				<b>\$370,868.65</b>
<b>700 Property</b>				
740 Depreciation				9,328.87
<b>Total Property</b>				<b>\$9,328.87</b>
<b>800 Other Objects</b>				
810 Dues and Fees				548.75
<b>Total Other Objects</b>				<b>\$548.75</b>
<b>Total 3100 Food Services</b>				<b>\$1,196,417.83</b>

	<u>Food Service(51)</u>	<u>Child Care Operations(52)</u>	<u>Other Enterprise(58)</u>	<u>Internal Service(60)</u>	<u>Total</u>
<b>3000 <u>Operation of Non-Instructional Services</u></b>					
3100 Food Services	1,196,417.83				1,196,417.83
<b>Total Operation of Non-Instructional Services</b>	<b>\$1,196,417.83</b>				<b>\$1,196,417.83</b>
<b>TOTAL ACTUAL EXPENDITURES &amp; OTHER FINANCING USES</b>	<b>\$1,196,417.83</b>				<b>\$1,196,417.83</b>