

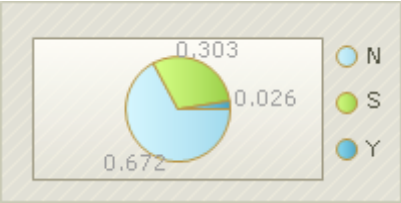
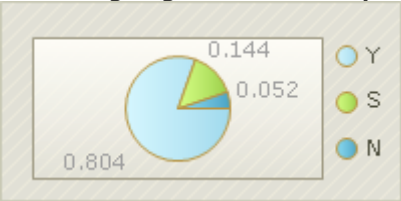
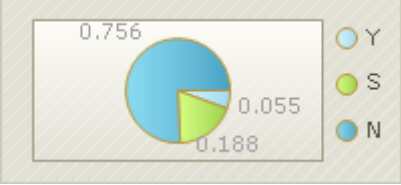
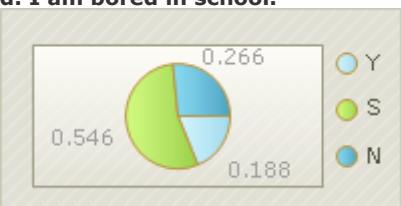
Student Grades 3 to 5 Climate Survey, Page 1, 2016-11-01 To 2017-02-28 [print](#)

TABLE 1	
Agreeable to... (GREEN) 2.6 and above Contradiction to... (Red) 1.9 and below	
a. Total Average School Climate Score	2.45
b. Social Emotional Learning Average Domain Score	2.25
c. Student Support Average Domain Score	2.65
d. High Expectations/Academic/Challenge Average Domain Score	2.38
e. Safe School Climate Average Domain Score	2.45

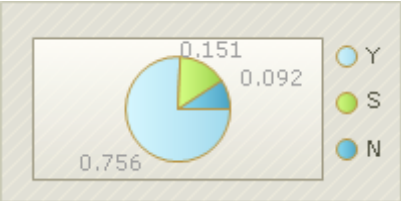
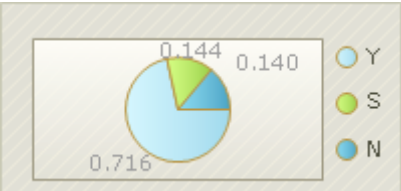
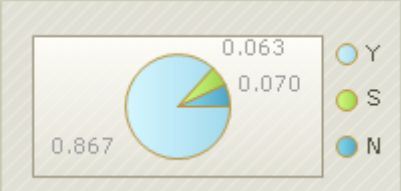
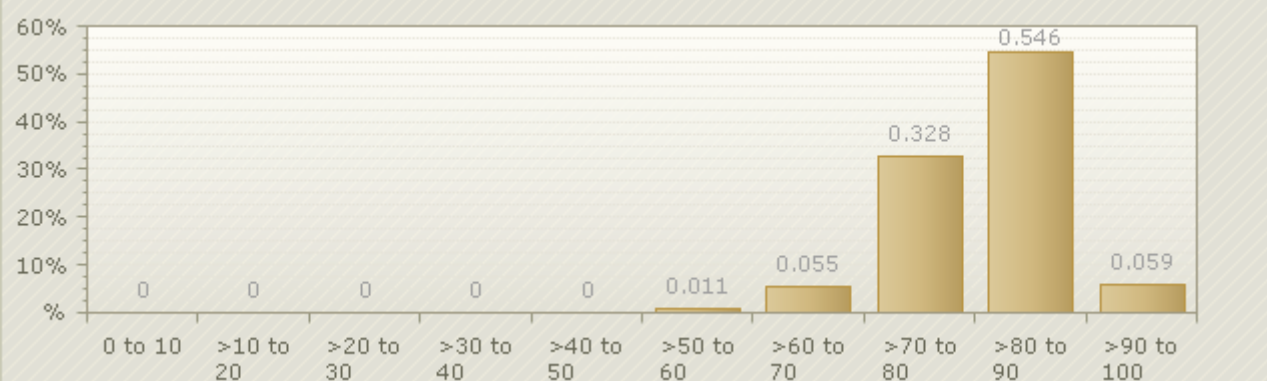
Question	Results
Rank how safe you believe your school is because of the school police officer.	
My school is just as safe as before the police/SRO came to our school	32 23.5%
My school is somewhat safer than before the police/SRO came to our school	30 22.1%
My school is much safer than before the police/SRO came to our school	74 54.4%
Select the one or more from the categories provided that best match.	
American Indian/Alaskan Native	15 5.3%
Black/African American	4 1.4%
Hispanic	0 0.0%
Multi-Racial	11 3.9%
White/Caucasian	244 86.8%
Asian	2 0.7%
Native Hawaiian or other Pacific Islander	1 0.4%
Unavailable/Unknown/Decline	4 1.4%

Question	Results
We have a police officer/school resource officer (SRO) in our school:	
Yes	136 50.2%
No	110 40.6%
Not Applicable	25 9.2%
The school police officer/school resource officer helps to make our school a safer place.	
Yes	132 97.1%
No	4 2.9%
What grade are you currently enrolled this school year?	
3rd Grade	105 38.7%
4th Grade	95 35.1%
5th Grade	67 24.7%
6th Grade	4 1.5%
Which category best describes your Gender?	
Female	153 56.5%
Male	118 43.5%

Student Grades 3 to 5 Climate Survey, Page 2

Question	Total Answers	3 Yes (Y)	2 Sometimes (S)	1 No (N)	Mean Rating
1. Please mark whether you agree with these statements about your school					
<p>a. Teachers and other staff in this school are fair to all students.</p>  <p>* Student Support Domain</p>	271	182 67.2%	82 30.3%	7 2.6%	2.65
<p>b. Teachers and other staff in this school are willing to give students help.</p>  <p>* Student Support Domain</p>	271	218 80.4%	39 14.4%	14 5.2%	2.75
<p>c. I wish I went to a different school.</p>  <p>* Student Support Domain ** Note: This question has been altered for this report so that the answer reflects the true value of other questions within the report. A disagreement with this question is a positive answer and would skew the total value of the domain.</p>	271	15 5.5%	51 18.8%	205 75.6%	2.70
<p>d. I am bored in school.</p>  <p>* High Expectations/Academic Rigor/Challenge Domain ** Note: This question has been altered for this report so that the answer reflects the true value of other questions within the report. A disagreement with this question is a positive answer and would skew the total value of the domain.</p>	271	51 18.8%	148 54.6%	72 26.6%	2.08

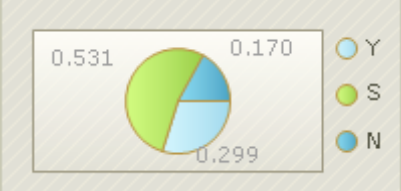
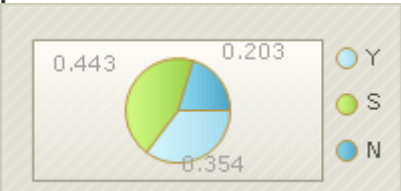
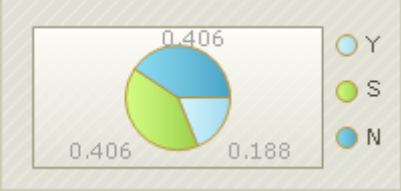
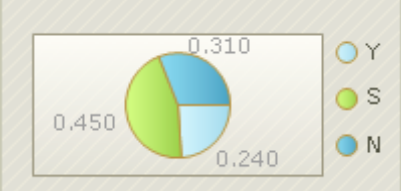
Student Grades 3 to 5 Climate Survey, Page 3

Question	Total Answers	3 Yes (Y)	2 Sometimes (S)	1 No (N)	Mean Rating
<p>e. I feel safe outside around the school</p>  <p><i>* Safe School Climate Domain</i></p>	271	205 75.6%	41 15.1%	25 9.2%	2.66
<p>f. I feel safe in the hallways and bathrooms of the school.</p>  <p><i>* Safe School Climate Domain</i></p>	271	194 71.6%	39 14.4%	38 14.0%	2.58
<p>g. I feel safe in my classroom.</p>  <p><i>* Safe School Climate Domain</i></p>	271	235 86.7%	17 6.3%	19 7.0%	2.80
					
<p>Note: Each respondents collection of answers for the question set above are averaged and plotted into this graph to show how the scores are distributed across the entire collection of respondents. In this specific set '0 to 10' would relate to 'No' and '>90 to 100' would relate to 'Yes'.</p>					

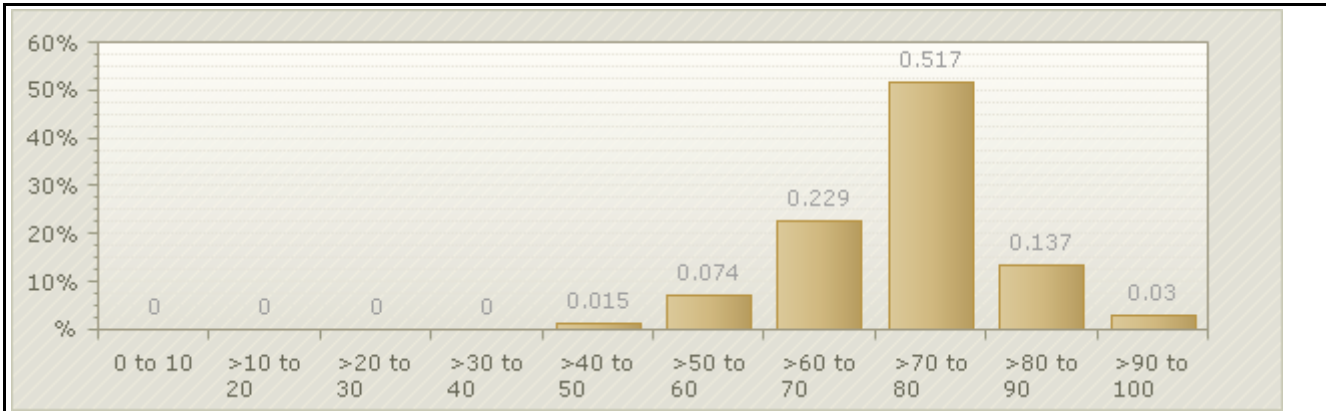
Student Grades 3 to 5 Climate Survey, Page 4

Question	Total Answers	3 Yes	2 Sometimes	1 No	Mean Rating
2. Please mark whether you agree with these statements about students in your school.					
<p>a. Most students in my school treat each other with respect.</p>  <p>0.465 0.074 0.461</p> <p>Y S N</p>					
* Safe School Climate Domain	271	125 46.1%	126 46.5%	20 7.4%	2.39
<p>b. Most students in my school stop and think before they get too angry.</p>  <p>0.524 0.196 0.280</p> <p>Y S N</p>					
* Social Emotional Learning Domain	271	76 28.0%	142 52.4%	53 19.6%	2.08
<p>c. Most of the students in my school do their part when we work together on a group project.</p>  <p>0.306 0.092 0.601</p> <p>Y S N</p>					
* Social Emotional Learning Domain	271	163 60.1%	83 30.6%	25 9.2%	2.51
<p>d. Most students in my school do their best, even when their school work is hard.</p>  <p>0.306 0.033 0.661</p> <p>Y S N</p>					
* Social Emotional Learning Domain	271	179 66.1%	83 30.6%	9 3.3%	2.63

Student Grades 3 to 5 Climate Survey, Page 5

Question	Total Answers	3 Yes	2 Sometimes	1 No	Mean Rating
<p>e. Most students in my school get mad when they disagree with people.</p>  <p>* Social Emotional Learning Domain ** Note: This question has been altered for this report so that the answer reflects the true value of other questions within the report. A disagreement with this question is a positive answer and would skew the total value of the domain.</p>	271	81 29.9%	144 53.1%	46 17.0%	1.87
<p>f. Most students in my school try to talk to other students if they are having a problem with them.</p>  <p>* Social Emotional Learning Domain</p>	271	96 35.4%	120 44.3%	55 20.3%	2.15
<p>g. Students at my school are bullied.</p>  <p>* Safe School Climate Domain ** Note: This question has been altered for this report so that the answer reflects the true value of other questions within the report. A disagreement with this question is a positive answer and would skew the total value of the domain.</p>	271	51 18.8%	110 40.6%	110 40.6%	2.22
<p>h. Students at my school are teased, picked on, made fun of, or called names.</p>  <p>* Safe School Climate Domain ** Note: This question has been altered for this report so that the answer reflects the true value of other questions within the report. A disagreement with this question is a positive answer and would skew the total value of the domain.</p>	271	65 24.0%	122 45.0%	84 31.0%	2.07

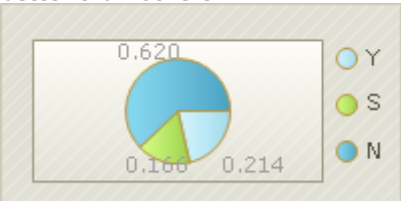
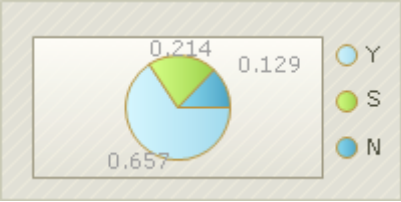
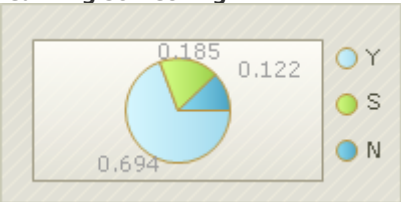
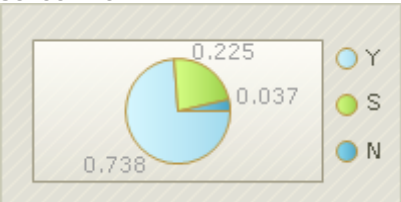
Student Grades 3 to 5 Climate Survey, Page 6



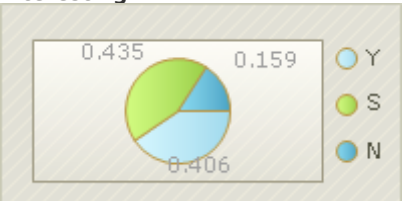
Note: Each respondents collection of answers for the question set above are averaged and plotted into this graph to show how the scores are distributed across the entire collection of respondents. In this specific set '0 to 10' would relate to 'No' and '>90 to 100' would relate to 'Yes'.

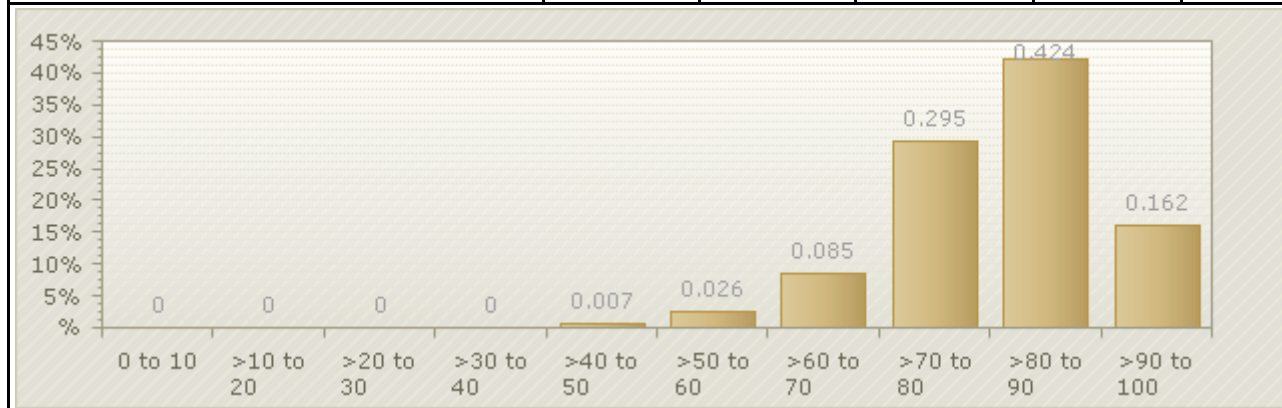
Question	Total Answers	3 Yes	2 Sometimes	1 No	Mean Rating
3. Please mark whether you agree with these statements about your teachers.					
a. My teachers want us to talk with others about things we are studying. 					
<i>* High Expectations/Academic Rigor/Challenge Domain</i>	271	141 52.0%	80 29.5%	50 18.5%	2.34
b. My teachers ask me to explain my answers. 					
<i>* High Expectations/Academic Rigor/Challenge Domain</i>	271	203 74.9%	57 21.0%	11 4.1%	2.71
c. My teachers really care about me. 					
<i>* Student Support Domain</i>	271	212 78.2%	50 18.5%	9 3.3%	2.75

Student Grades 3 to 5 Climate Survey, Page 7

Question	Total Answers	3 Yes	2 Sometimes	1 No	Mean Rating
<p>d. My teachers treat some students better than others.</p>  <p><i>* Student Support Domain</i> ** Note: This question has been altered for this report so that the answer reflects the true value of other questions within the report. A disagreement with this question is a positive answer and would skew the total value of the domain.</p>	271	58 21.4%	45 16.6%	168 62.0%	2.41
<p>e. The homework I get from my teachers helps me learn.</p>  <p><i>* High Expectations/Academic Rigor/Challenge Domain</i></p>	271	178 65.7%	58 21.4%	35 12.9%	2.53
<p>f. My teachers notice if I have trouble learning something.</p>  <p><i>* Student Support Domain</i></p>	271	188 69.4%	50 18.5%	33 12.2%	2.57
<p>g. My teachers help me do better on my school work.</p>  <p><i>* Student Support Domain</i></p>	271	200 73.8%	61 22.5%	10 3.7%	2.70

Student Grades 3 to 5 Climate Survey, Page 8

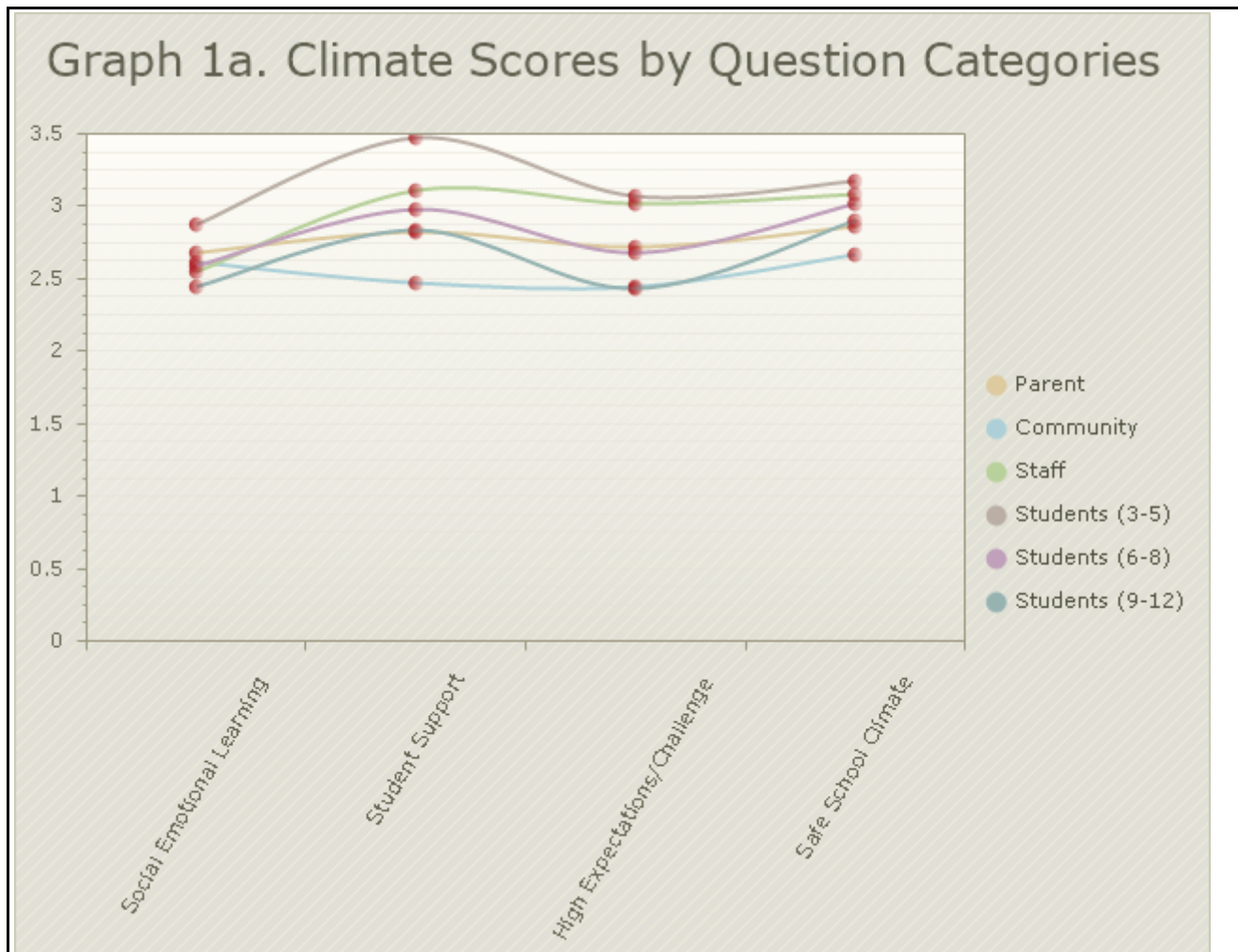
Question	Total Answers	3 Yes	2 Sometimes	1 No	Mean Rating
<p>h. My teachers give me work that is interesting.</p>  <p>* High Expectations/Academic Rigor/Challenge Domain</p>	271	110 40.6%	118 43.5%	43 15.9%	2.25



Note: Each respondents collection of answers for the question set above are averaged and plotted into this graph to show how the scores are distributed across the entire collection of respondents. In this specific set '0 to 10' would relate to 'No' and '>90 to 100' would relate to 'Yes'.

Safeschools Reference Data						
	Academic	Conduct	Drug & Alcohol	Tobacco	Violence	Weapon
Out of School Suspensions	0	21	3	0	10	1
Expulsions	0	0	0	0	0	0
Truancy Rate	6.61%					

Student Grades 3 to 5 Climate Survey, Page 9



Added/Custom Questions	
Question	Results
Most students at my school stand-up for students who are bullied	
Uncertain	98 36.2%
Yes	131 48.3%
No	42 15.5%
Most students at my school invite others to join in games and activities.	
Uncertain	52 19.2%
Yes	176 64.9%
No	43 15.9%
Most students at my school make new students feel welcomed.	
Yes	218 80.4%
No	13 4.8%
Uncertain	40 14.8%
Adults in my school follow through when I report a problem.	

Yes	209 77.1%
No	20 7.4%
Uncertain	42 15.5%
Adults in my school get involved to help stop or solve student conflicts.	
Uncertain	35 12.9%
Yes	223 82.3%
No	13 4.8%